

YOU ARE INVITED TO ATTEND A PUBLIC ENGAGEMENT SESSION

# South Carolina's Energy Future



Public  
Engagement



Clean  
Power  
Plan



State  
Energy  
Plan

## SC's Energy Plan and EPA's Clean Power Plan

**Date:** December 10, 2015

**Time:** 5:30–8 p.m.

Formal presentations will begin at 6 p.m. Representatives available for one-on-one discussions before and after presentations.

**Place:** Columbia Metropolitan Convention Center  
1101 Lincoln Street  
Columbia, SC 29201

### Topics to be discussed:

- South Carolina's Energy Plan  
SC Office of Regulatory Staff's Energy Office
- EPA's Clean Power Plan  
SC DHEC
- Community Perspectives

Please visit DHEC's website for details about additional public engagement sessions:

[WWW.SCDHEC.GOV/CLEANPOWERPLAN](http://WWW.SCDHEC.GOV/CLEANPOWERPLAN)



South Carolina Department of Health  
and Environmental Control



# Public Engagement Session on South Carolina's Energy Future: SC's Energy Plan and EPA's Clean Power Plan

Thursday, December 10, 2015  
Columbia, South Carolina

## AGENDA

<b>Welcome and Introductions</b>	Myra C. Reece, Interim Director <i>Environmental Affairs</i> SC DHEC
<b>South Carolina's Energy Plan</b>	Nanette Edwards, Deputy Exec. Director <i>SC Office of Regulatory Staff</i>
<b>EPA's Clean Power Plan</b>	Robbie Brown, Director <i>Air Assessment &amp; Regulation Division</i> <i>Bureau of Air Quality, SC DHEC</i>
<b>Participant Poll</b>	Maeve Mason, Manager <i>Regulation &amp; SIP Management Section</i> <i>Bureau of Air Quality, SC DHEC</i>
<b>Community Perspectives</b>	Reverend Leo Woodberry <i>Kingdom Living Temple</i>
<b>Closing Remarks</b>	Myra C. Reece

*Staff will be available after presentations to take individual questions in the booth area.*



**ENERGY  
OFFICE**



# Participant Polling: Questions and Results

The following attachment provides a summary of the public engagement session. The summary provides both the questions posed as well as participant responses. This summary only represents the responses from those individuals who attended and participated in a particular public engagement session and are not meant to be representative of any larger population.

**Session Name:** Columbia Session 12102015

**Date Created:** 12/10/2015 4:57:49 PM

**Active Participants:** 52 of 52

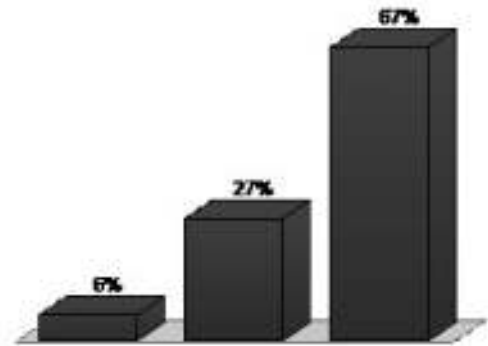
**Average Score:** 0.00%

**Questions:** 14

## Results by Question

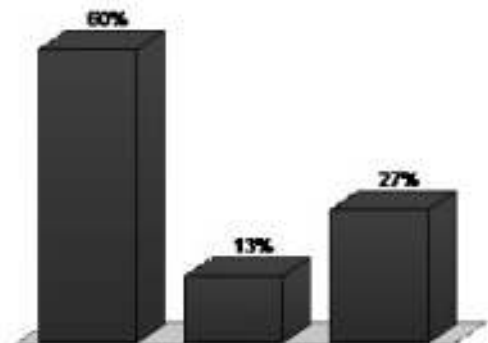
**1. The EPA’s Clean Power Plan is intended to reduce emissions of Carbon Dioxide (CO2) from power plants in the U.S. How important is reducing CO2 from power plants to you? (Multiple Choice)**

Responses		
	Percent	Count
Not very important	5.88%	3
Somewhat important	27.45%	14
Very important	66.67%	34
<b>Totals</b>	<b>100%</b>	<b>51</b>



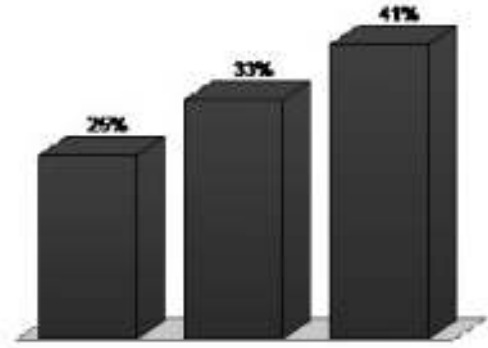
**2. As the state’s population and economic activity increase, it is likely that we will need new power generation. If you were in charge, what would be the most important factor to consider when thinking about meeting future needs? (Multiple Choice)**

Responses		
	Percent	Count
Protecting the environment	59.62%	31
Low utility bills	13.46%	7
Reliable service	26.92%	14
<b>Totals</b>	<b>100%</b>	<b>52</b>



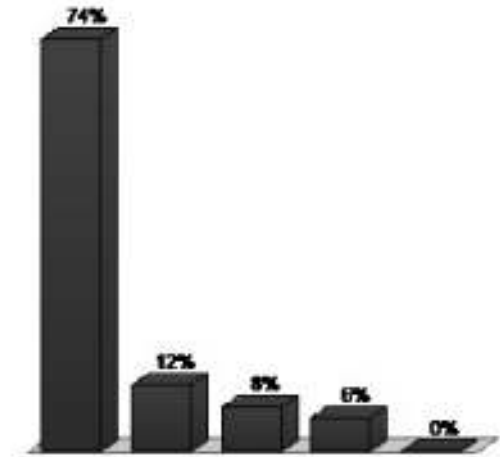
**3. Given your answer to the previous question, what is the second most important consideration to you?  
(Multiple Choice)**

<b>Responses</b>		
	<b>Percent</b>	<b>Count</b>
Protecting the environment	25.49%	13
Low utility bills	33.33%	17
Reliable service	41.18%	21
<b>Totals</b>	<b>100%</b>	<b>51</b>



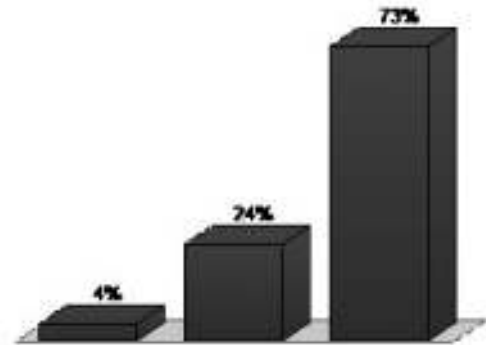
4. The EPA’s Clean Power Plan requires South Carolina to submit a plan by 2018 to show how the state will meet the EPA’s goal for reducing CO2 from power plants. If South Carolina does not submit a plan, or does not have its plan approved by the EPA, the EPA will develop a plan for the state. How important is it to you that South Carolina develops its own plan, instead of the EPA developing the plan for our state? (Multiple Choice)

	Responses	
	Percent	Count
Very important to me that South Carolina develops its own plan	74%	37
Somewhat important to me that South Carolina develops its own plan	12%	6
I am neutral	8%	4
Somewhat important to me that EPA develops the plan for South Carolina	6%	3
Very important to me that that EPA develops the plan for South Carolina	0%	0
<b>Totals</b>	<b>100%</b>	<b>50</b>



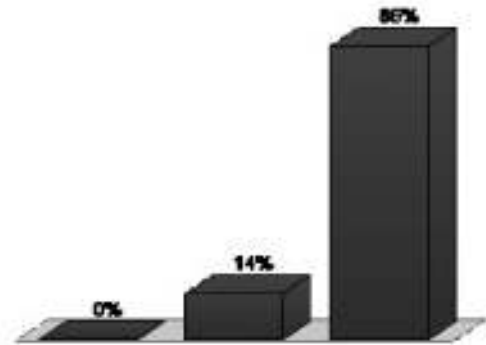
**5. How important is it to you that consumer-oriented compliance options, like energy efficiency and distributed energy resources, be included in our state implementation plan? (Multiple Choice)**

Responses		
	Percent	Count
Not very important to me	3.92%	2
Somewhat important to me	23.53%	12
Very important to me	72.55%	37
<b>Totals</b>	<b>100%</b>	<b>51</b>



**6. How interested are you in staying informed of the potential actions that may be required by the state of South Carolina to meet the EPA’s Clean Power Plan 2030 goal for reducing CO2 from power plants? (Multiple Choice)**

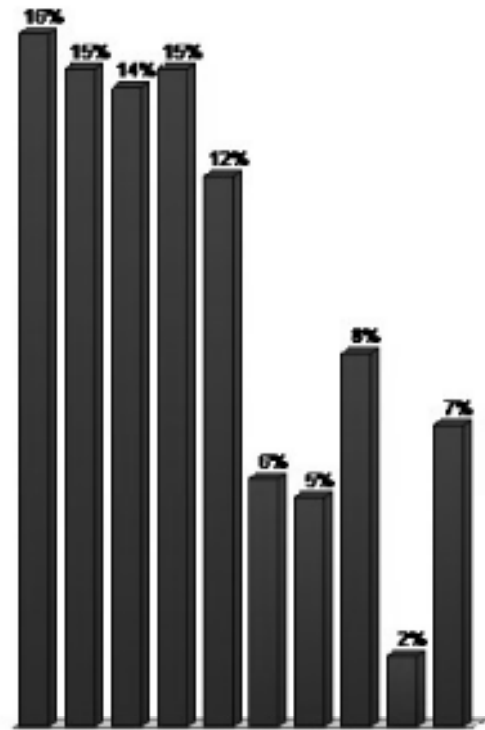
Responses		
	Percent	Count
Not very interested	0%	0
Somewhat interested	13.73%	7
Very interested	86.27%	44
<b>Totals</b>	<b>100%</b>	<b>51</b>



**7. Which of the following no cost/low cost energy saving measures have you taken? (Multiple Choice - Multiple Response)**

Responses		
	Percent	Count
Changed lightbulbs from incandescent (old fashioned) to CFL (swirly)	15.66%	39
Changed lightbulbs	14.86%	37

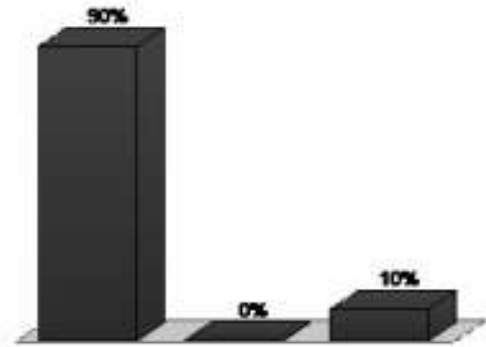
from incandescent or CFL to LED (all sorts of shapes)		
Installed ceiling fans to help cool a room	14.46%	36
Made sure all windows, especially those facing south or west, have blinds or curtains to block sun on hot summer days	14.86%	37
Checked for leaks around windows, doors and plumbing pipes and caulked, sealed, or used weather stripping	12.45%	31
Planted trees, tall shrubs or vines to shade the south/west side of the house	5.62%	14
Used a clothesline or drying rack rather than a dryer	5.22%	13
Installed a programmable thermostat	8.43%	21
None of the above	1.61%	4
Other(s) not listed	6.83%	17
<b>Totals</b>	<b>100%</b>	<b>249</b>





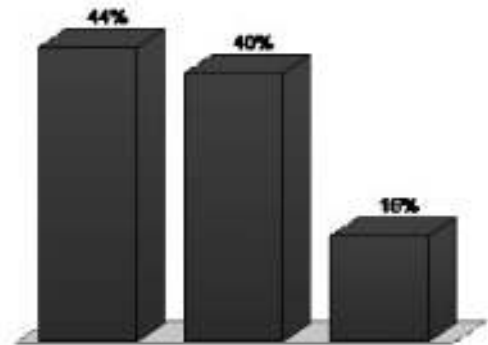
**8. Should South Carolina participate in EPA’s Clean Energy Incentive Program (CEIP)? EPA’s PROPOSED program rewards early investments in wind and solar renewable energy projects and energy efficiency investments that are implemented in low-income communities. State participation in this program is optional. (Multiple Choice)**

<b>Responses</b>		
	<b>Percent</b>	<b>Count</b>
Yes	90.2%	46
No	0%	0
No opinion	9.8%	5
<b>Totals</b>	<b>100%</b>	<b>51</b>



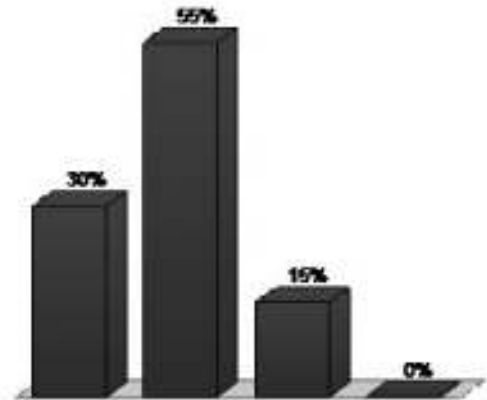
**9. EPA is currently taking comments on several aspects of its Clean Energy Incentive Program (CEIP). What improvements or changes would you like to see included in this incentive program? (Multiple Choice - Multiple Response)**

<b>Responses</b>		
	<b>Percent</b>	<b>Count</b>
Additional incentives for renewable energy projects in low income communities, such as community shared solar projects	44.12%	45
Additional incentives for energy efficiency measures and renewable energy projects that begin construction before the submittal of state plans in 2018. (EPA should offer incentives for states who are taking action now)	40.2%	41
Other(s) not listed	15.69%	16
<b>Totals</b>	<b>100%</b>	<b>102</b>



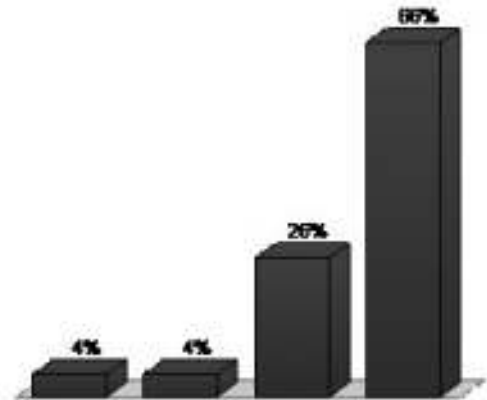
**10. “Park and Ride” facilities are designated areas where commuters can park their cars and either carpool with others or take public transit the rest of the way to their destination. How likely would you be to use a Park and Ride facility if one were available in your area? (Multiple Choice)**

<b>Responses</b>		
	<b>Percent</b>	<b>Count</b>
Not at all...I like my space	29.79%	14
I'd like to try it	55.32%	26
Love to!	14.89%	7
There is one nearby and I use it often	0%	0
<b>Totals</b>	<b>100%</b>	<b>47</b>



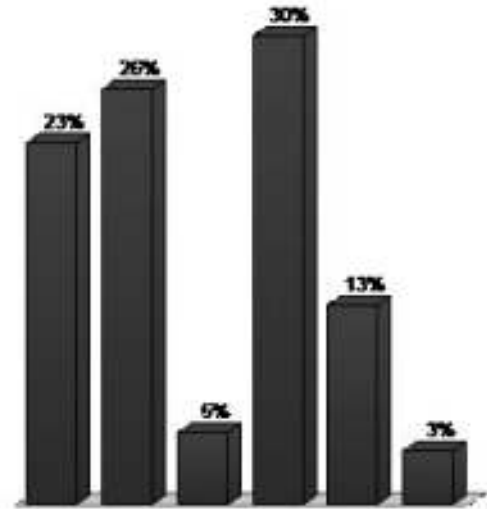
**11. Which of the following forms of public transit/shared transit do you use? (Multiple Choice - Multiple Response)**

<b>Responses</b>		
	<b>Percent</b>	<b>Count</b>
Bus	4%	2
Regional transport	4%	2
Car pool	26%	13
None of the above	66%	33
<b>Totals</b>	<b>100%</b>	<b>50</b>



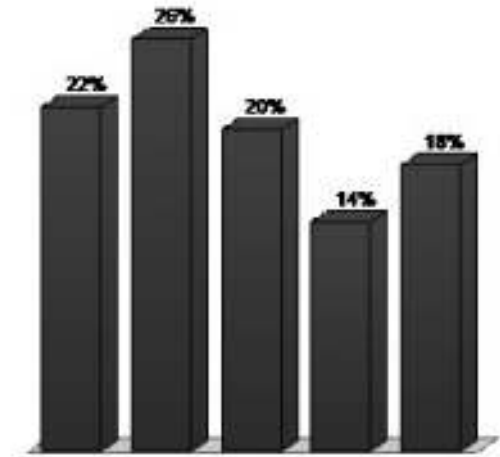
**12. If you don't use public transit of any kind, or don't use it often, is it because... (Multiple Choice - Multiple Response)**

<b>Responses</b>		
	<b>Percent</b>	<b>Count</b>
It isn't available where I live	22.99%	20
It doesn't go close to where I need to go	26.44%	23
It doesn't seem safe	4.6%	4
I like the freedom of my own vehicle	29.89%	26
Other	12.64%	11
Not applicable... I do use it!	3.45%	3
<b>Totals</b>	<b>100%</b>	<b>87</b>



**13. Please indicate your desired level of involvement in SC’s energy future: (Multiple Choice - Multiple Response)**

<b>Responses</b>	
<b>Percent</b>	<b>Count</b>
I'll visit the DHEC and/or Energy Office websites to get the latest updates at my convenience	21.58% 30
I would like to receive email updates from DHEC	25.9% 36
I would like to receive Energy Office newsletters and will sign up tonight	20.14% 28
I would like to attend meetings of the local air quality coalition	14.39% 20
I would like to participate in community focus group (s)	17.99% 25
<b>Totals</b>	<b>100% 139</b>



14. Which term best describes you? (Multiple Choice)

	Responses	
	Percent	Count
General public	6%	3
State agency	24%	12
Local government	2%	1
Utility	22%	11
Academia (Educator or student)	0%	0
Health practitioner	0%	0
Clean energy or conservation organization representative, employee, or member	36%	18
Media	0%	0
Other	10%	5
<b>Totals</b>	<b>100%</b>	<b>50</b>

