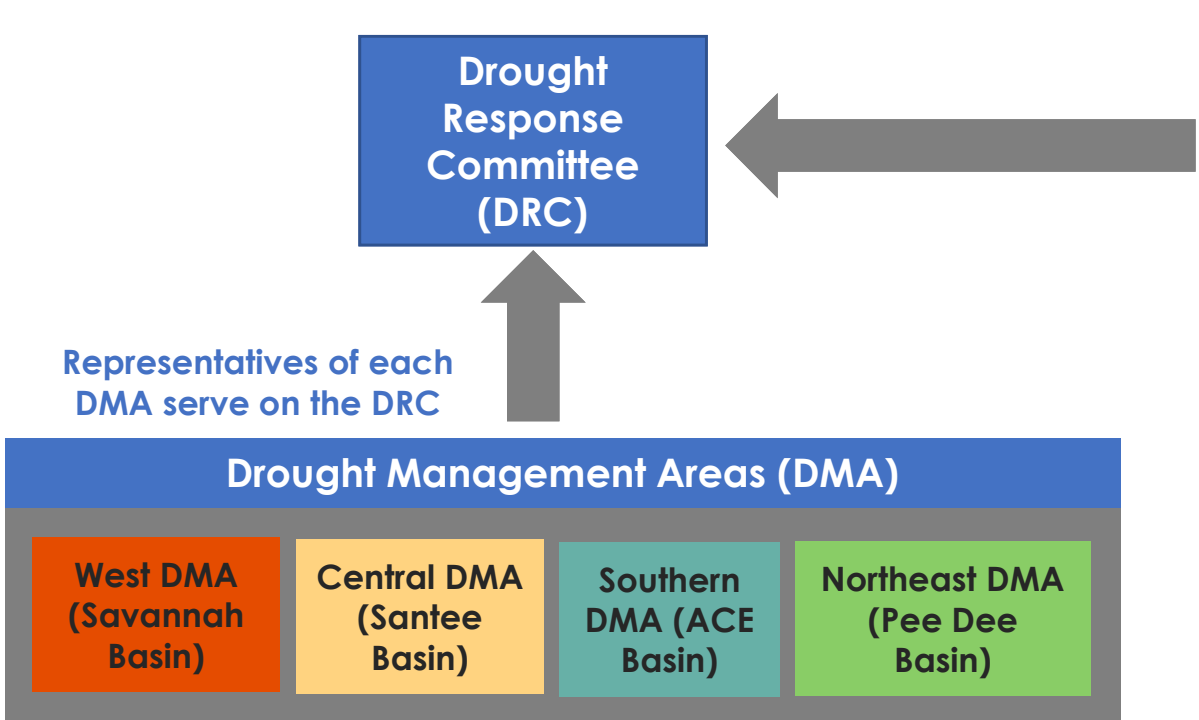


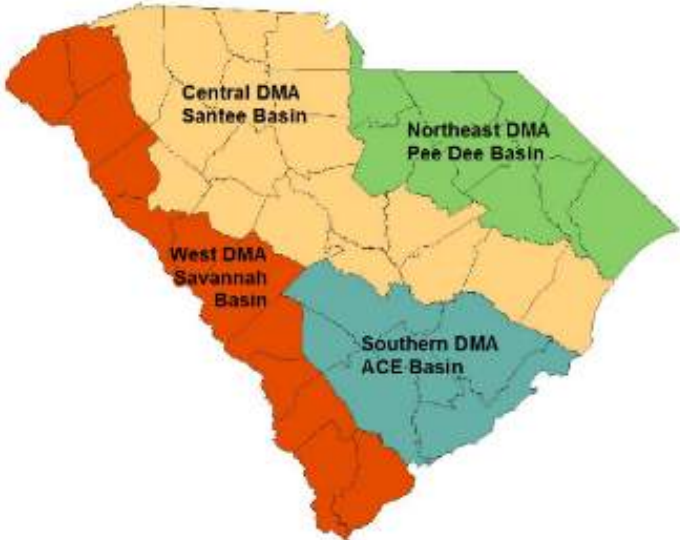


Drought Response Initiatives and Recommendations

South Carolina Drought Response Committee

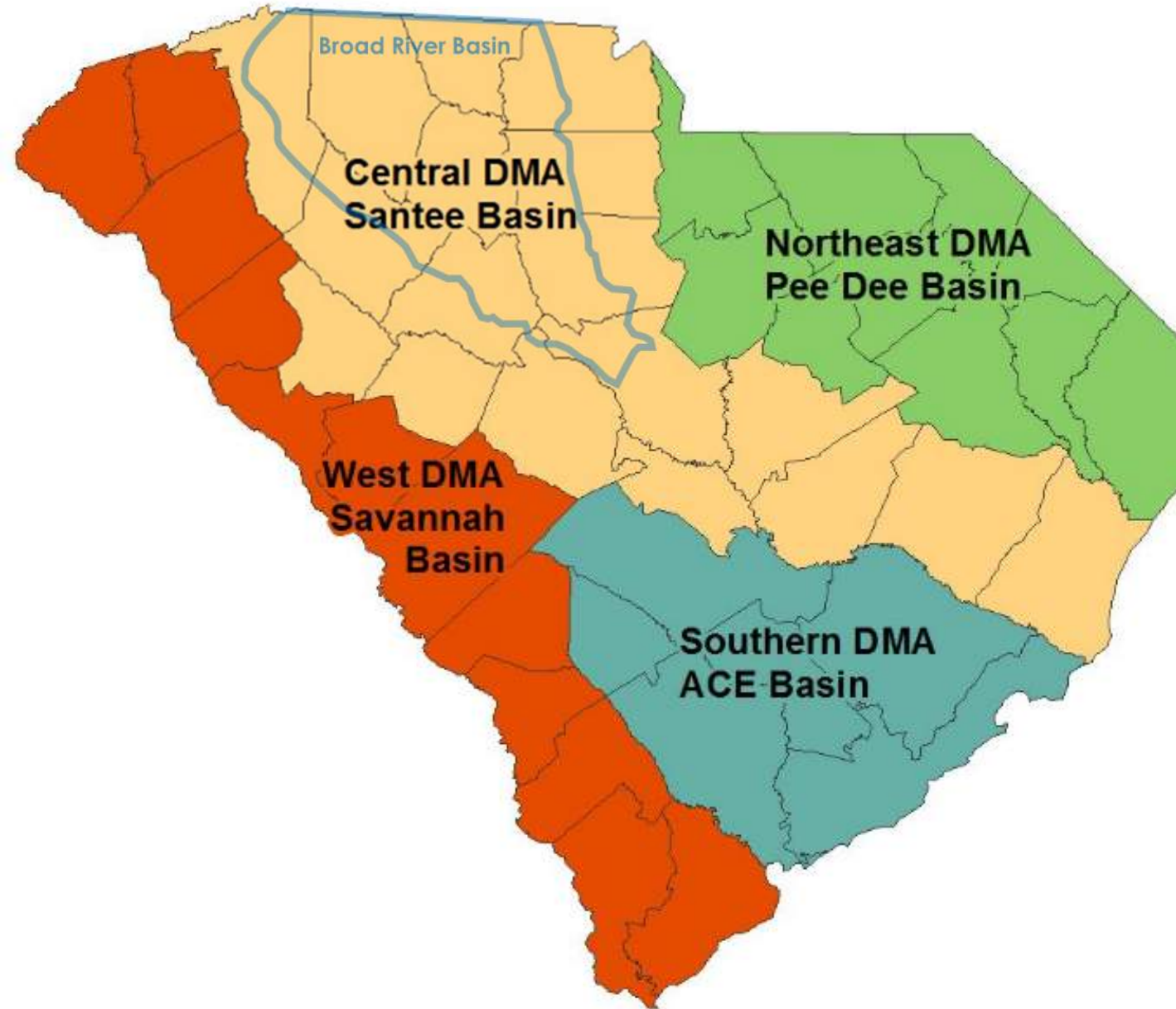


State Agency Members	
Committee Member	Agency
Mr. Ken Rentiers	SCDNR, LWC Division
Mr. David Thachik	SC Emergency Management Division
Mr. Joe Koon	SCDHEC
Mr. Darryl Jones	SC Forestry Commission
Mr. Chad Truesdale	SC Department of Agriculture



The DRC carefully and closely monitors, conserves, and manages the State’s water resources in the best interest of all South Carolinians.

Drought Management Areas

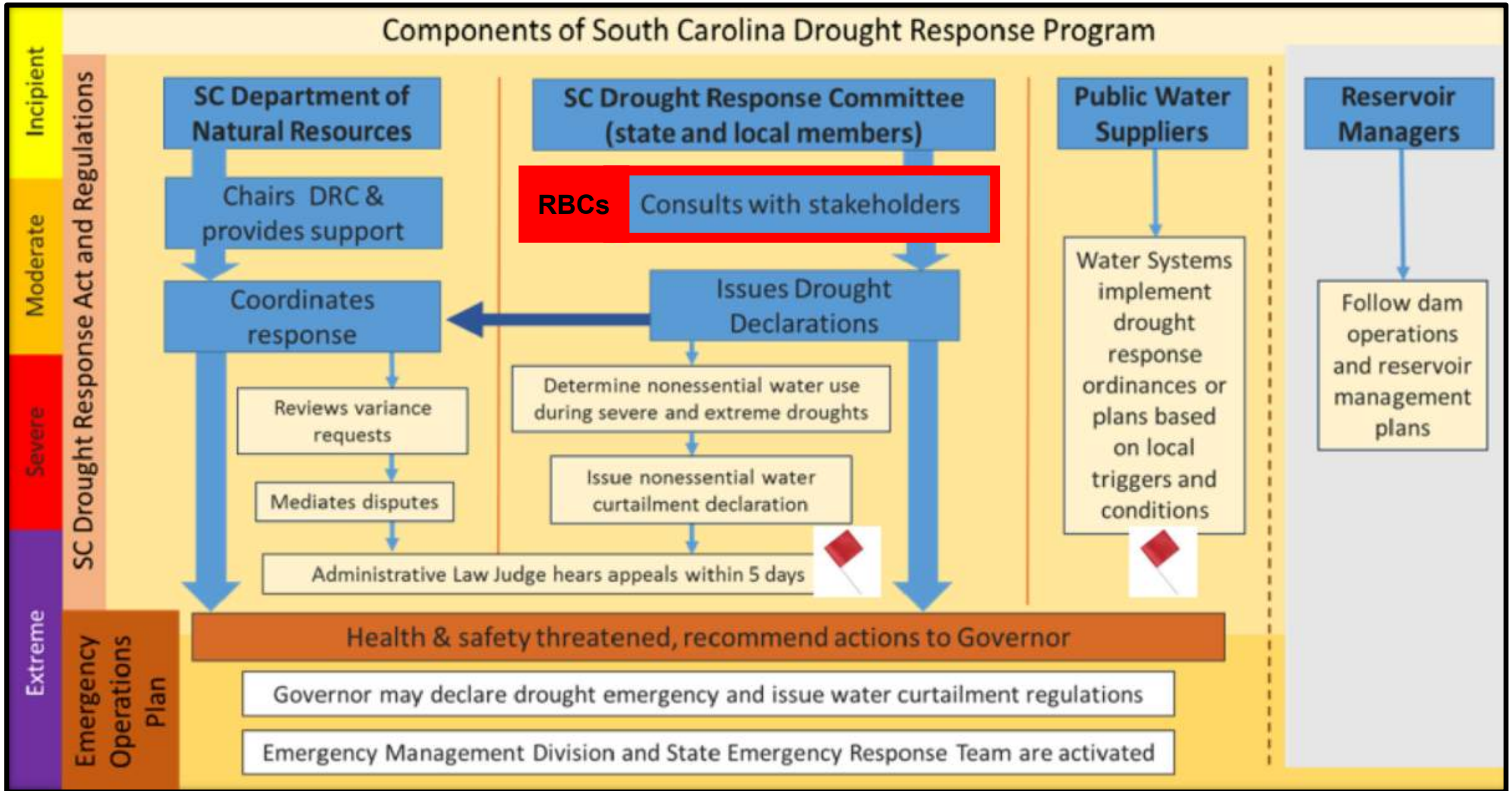


Central Drought Management Area		
Group	Committee Member	County
Agriculture	John Irwin	Laurens
Commission of Public Works	Ken Tuck	Spartanburg
Counties	Vacant	
Domestic User	Christy Jones - Appointment Pending	Richland
Industry	Ed Holder - Appointment Pending	Greenville
Municipalities	James G. Bagley - Reappointment 03/01/2018	York
Power Generation Facilities	Alan Stuart - Appointment 03/01/2018	York
Private Water Supplier	Brad C. Powers - Reappointment 03/01/2018	Spartanburg
Public Service District	Vacant	
Regional Council of Gov.	Gregory Sprouse - Appointment 03/01/2018	Richland
Soil and Water Conservation District	John T. Rivers - Appointment March, 2008	Sumter
Special Purpose District	Fred Castles - Appointment Pending	Chester

Per the Planning Framework, the Specific Obligations of the RBC, with Support from the SCDNR, are:

1. Collecting and evaluating local hydrologic information for drought assessment.
2. Providing local drought information and recommendations to the DRC regarding drought declarations.
3. Communicating drought conditions and drought declarations to the rest of the RBC, stakeholders, and the public.
4. Advocating for a coordinated, basin-wide response by entities with drought management responsibilities.
5. Coordinating with other drought management groups in the basin as needed.

Components of South Carolina Drought Response Program



From: Broad RBC Meeting #3, **Drought Response and Planning in South Carolina**, Elliot Wickham, Ph.D.

Planning Framework Outline for **Chapter 8. Drought Response**

1. Summarize **existing drought plans** and **drought advisory groups**
2. Summarize any **drought response initiatives** developed by the RBC
3. List **recommendations** on drought management or drought management strategies
4. Include a **communication plan** to inform stakeholders and the public on current drought conditions and activities regarding drought response



Drought Response

1. Does the RBC want to develop **drought response initiatives**?

Example 1: Edisto RBC's Low Flow Management Strategy

The strategy serves to augment statewide and municipal drought management plans by triggering tiered withdrawal curtailment by the **largest water users** in the basin when Edisto River flow reaches certain low levels.

Incremental Percent Below 20% of Median Flow	Edisto River Flow Range (cfs) at Givhans Ferry		Reduction Goal for Surface Water Withdrawals
	Lower	Upper	
0-20%	266	332	20%
20-40%	199	266	40%
40-60%	133	199	60%
60-80%	66	133	80%
80-100%	0	66	100%



Example 2: CWWMG Low Inflow Protocol

Stage *	Water Use Reduction Actions		
	Licensee (Duke)	Public Water Suppliers	Owners of Large Water Intakes
0	Reduce Wylie Recreation Flow Releases	None	None
1	Reduce Project Flow Requirements	Implement voluntary water use restrictions, 2 day/wk irrigation, reduce vehicle washing GOAL: 3-5% water use reduction	Request voluntary reductions of customers/employees
2	Eliminate recreation flows, further reduce other Project Flow Requirements	Implement mandatory water use restrictions, 2 day/wk irrigation, eliminate vehicle washing GOAL: 5-10% water use reduction	Request voluntary reductions of customers/employees
3	Reduce releases to Critical Flows	Implement increased mandatory water use restrictions, 1 day/wk irrigation, limit other outdoor water uses GOAL: 10-20% water use reduction	Request voluntary reductions of customers/employees

** Triggers for each stage are based on a storage index, Drought Monitor 3-month avg, and 6-month average streamflows*



Drought Response

2. Does the RBC want to develop **Recommendations** on drought management or drought management strategies?

Example Drought Response Recommendations for RBC Discussion

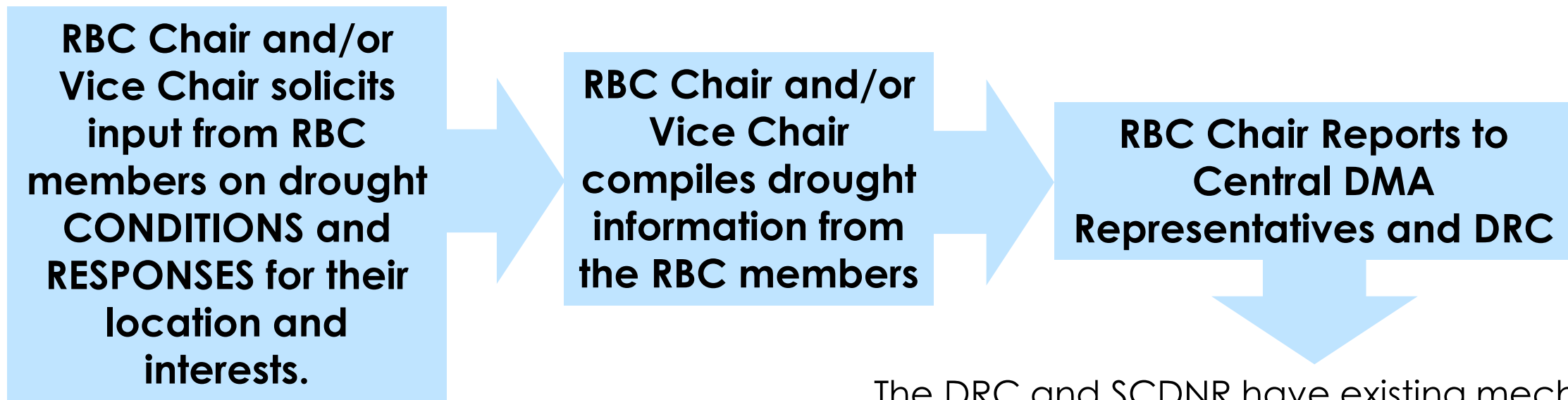
The Broad RBC Recommends that...

- Water utilities review and update their Drought Management Plans every 3-5 years.
- Water utilities coordinate their drought response actions.
 - Example: At severe stage, SWS has an even-odd outdoor water use plan while SJWD restricts outdoor water use to Thr/Sun or Wed/Sat, depending on address.
- Water utilities coordinate their drought response messaging.
- Water utilities in the basin establish drought surcharges on water use during moderate, extreme, and/or severe drought conditions.

Drought Response – Communication Plan

3. How does the RBC want to **Communicate** to the rest of the RBC, the public, and stakeholders?

One suggested approach (to start a discussion)...



The DRC and SCDNR have existing mechanisms to communicate and coordinate drought response with stakeholders and the public.