

Water Withdrawal in the Broad River Basin

Alex Pellett

Hydrologist

SC Department of Natural Resources
Land, Water and Conservation



Broad River Basin Council – Meeting #4
Presbyterian College
July 14th, 2022

Water Withdrawal Reporting

Withdrawals greater than 3 million gallons in a month should be reported to DHEC.

Exceptions include farm ponds, ponds filled only with surface water runoff, and wildlife habitat management (typically duck ponds).

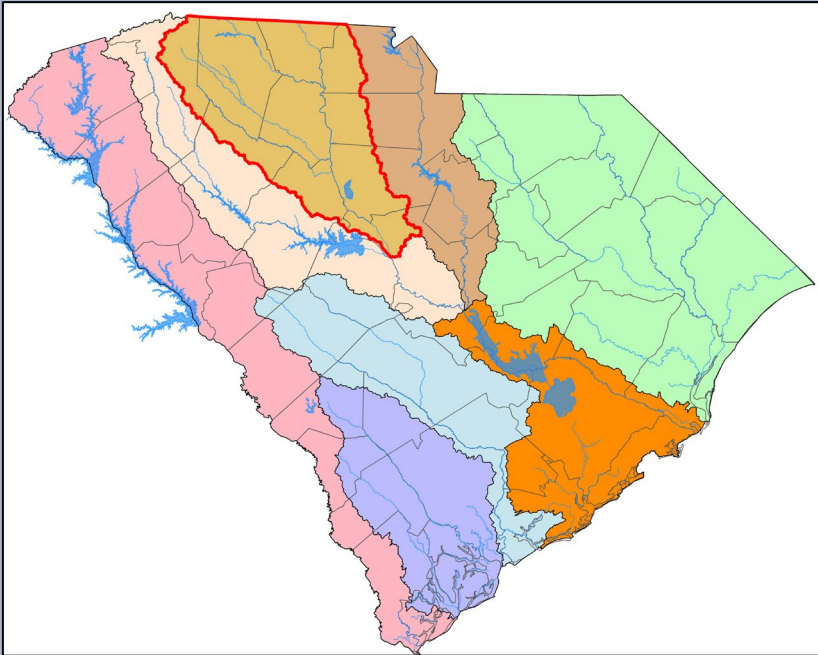
Withdrawal volumes are self-reported.

Between reporting and data entry, there are occasional errors.

The water withdrawal reporting system is being converted to an entirely digital system (E-Permitting), which could reduce data entry errors in the future.

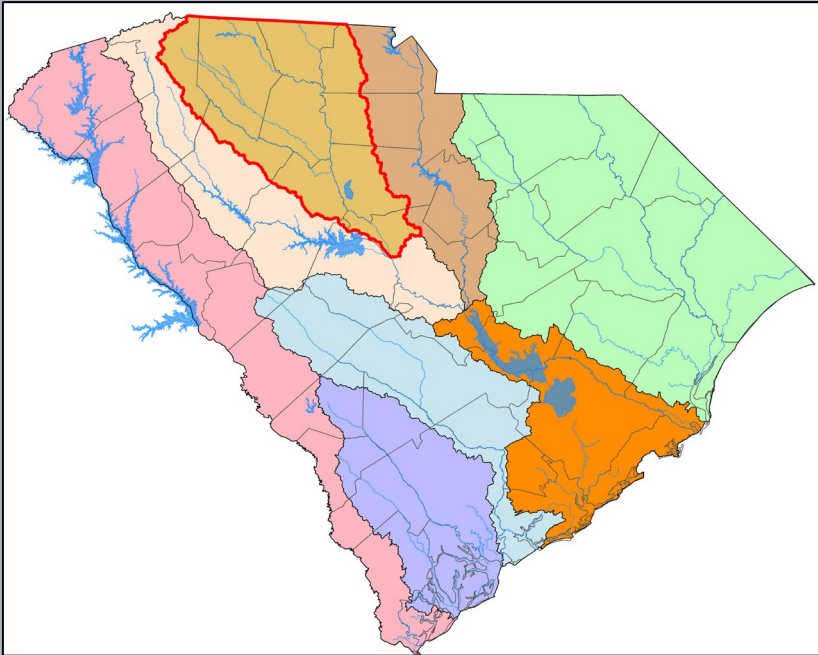


Reported Withdrawals in 2021 – Excluding Hydroelectric Power



Surface water withdrawals (MGD)	Groundwater withdrawals (MGD)
Savannah 2,874.5 (52.1 %)	Pee Dee 112.8 (40.5 %)
Pee Dee 825.3 (15.0 %)	Edisto 60.5 (21.7 %)
Broad 728.4 (13.2 %)	Salkehatchie 38.6 (13.9%)
Santee 400.8 (7.3 %)	Savannah 36.3 (13.0 %)
Saluda 328.4 (6.0 %)	Santee 18.4 (6.6 %)
Catawba 286.6 (5.2 %)	Catawba 6.5 (2.3 %)
Edisto 70.6 (1.3 %)	Saluda 5.1 (1.8 %)
Salkehatchie 5.0 (0.1%)	Broad 0.5 (0.2 %)
Total 5,519.6	Total 278.7

Reported Withdrawals in 2021 – Excluding Power

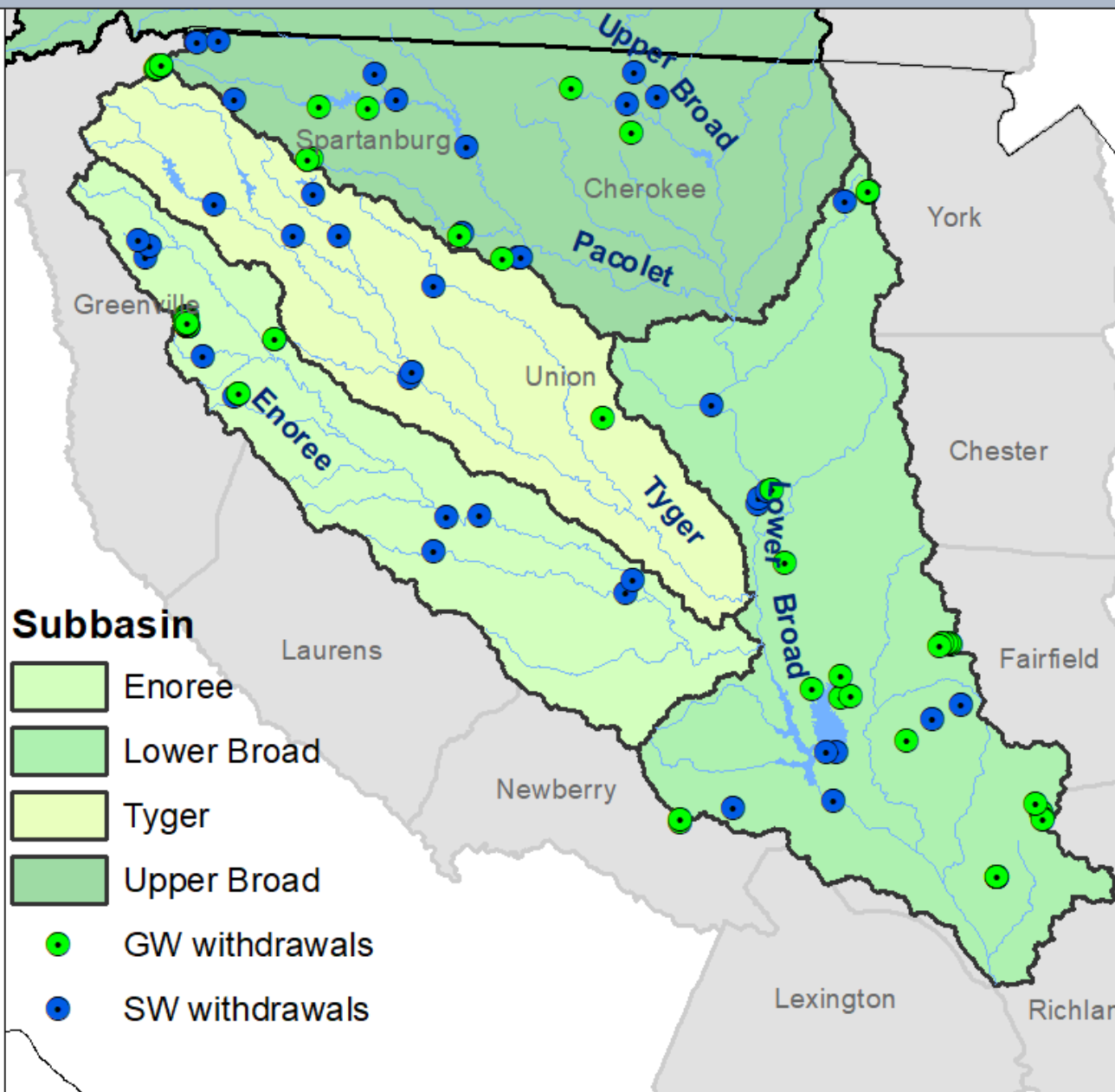


Surface water withdrawals (MGD)	Groundwater withdrawals (MGD)
Santee 399.7 (28.6 %)	Pee Dee 111.7 (40.2 %)
Saluda 327.5 (23.4 %)	Edisto 60.5 (21.8 %)
Pee Dee 141.2 (10.1 %)	Salkehatchie 38.6 (13.9%)
Savannah 228.7 (16.3%)	Savannah 36.3 (13.1 %)
Catawba 125.7 (9.0%)	Santee 18.4 (6.6 %)
Broad 100.7 (7.2 %)	Catawba 6.5 (2.3 %)
Edisto 70.4 (5.0%)	Saluda 5.1 (1.8 %)
Salkehatchie 5.0 (0.4%)	Broad 0.5 (0.2 %)
Total 1,398.9	Total 277.7





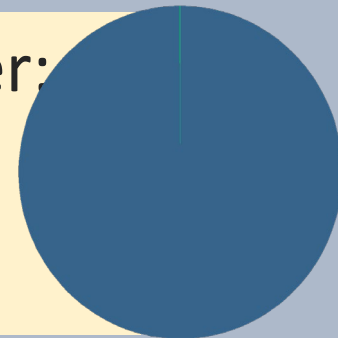
Reported Withdrawals by Source in 2021



Excluding Hydroelectric power:

Surface water: 99.9 %

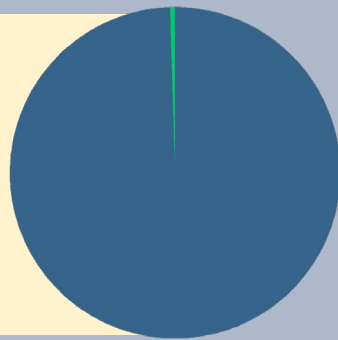
Groundwater: 0.1 %



Excluding Power:

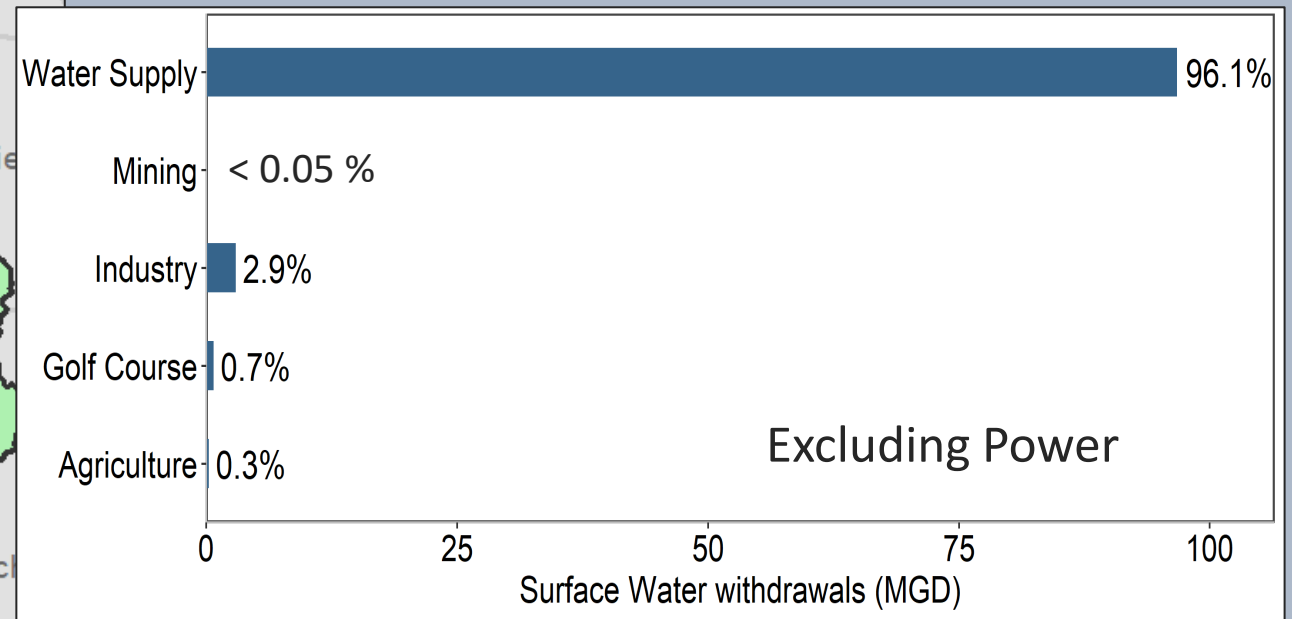
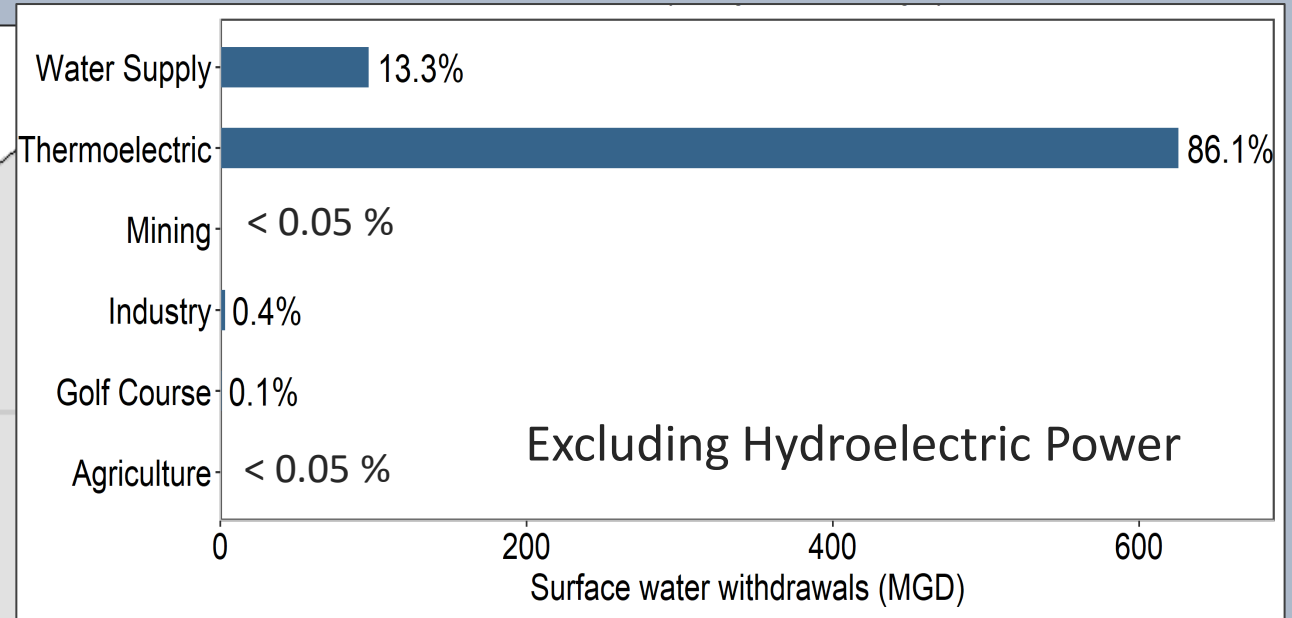
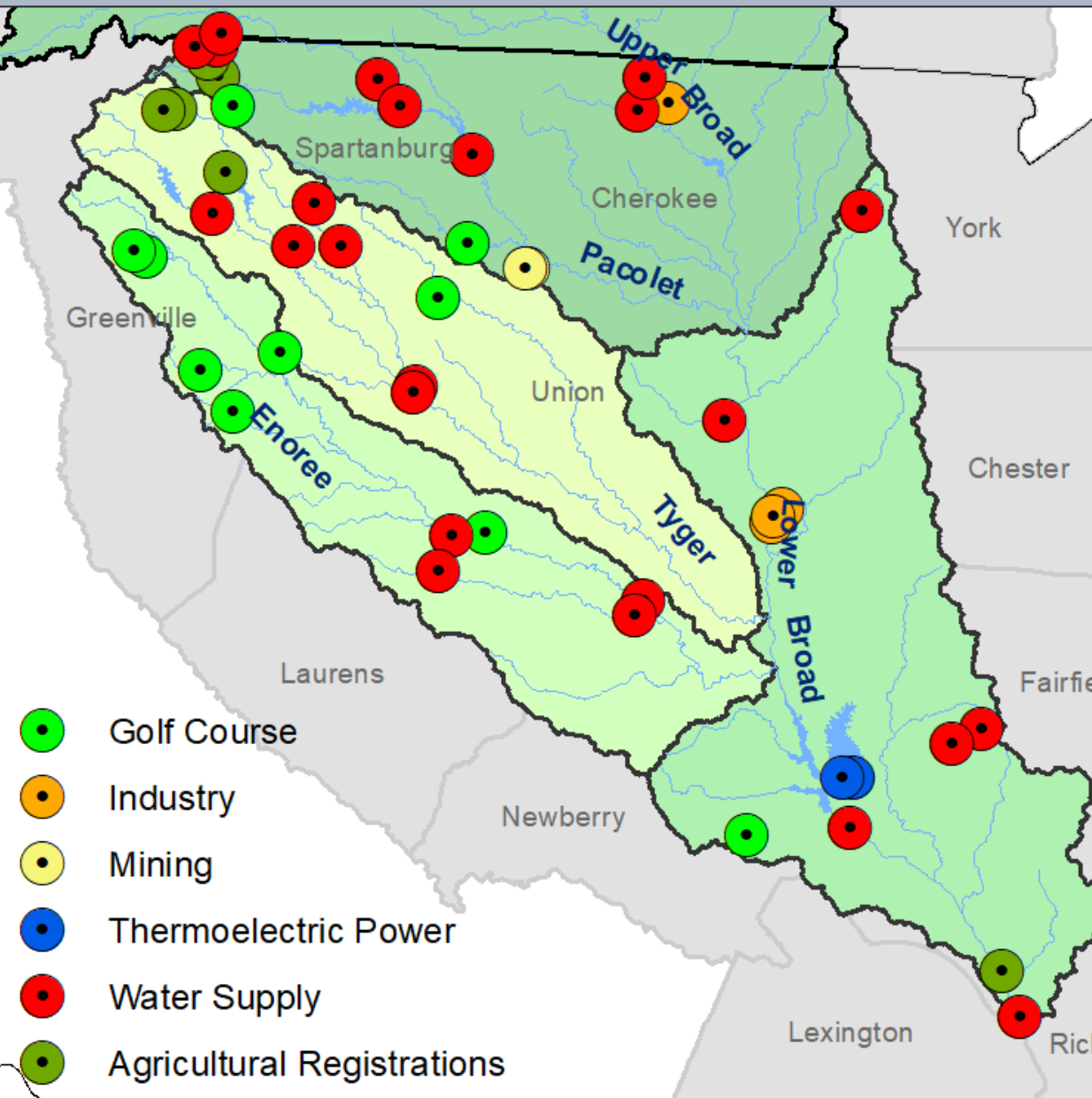
Surface water: 99.5 %

Groundwater: 0.5 %



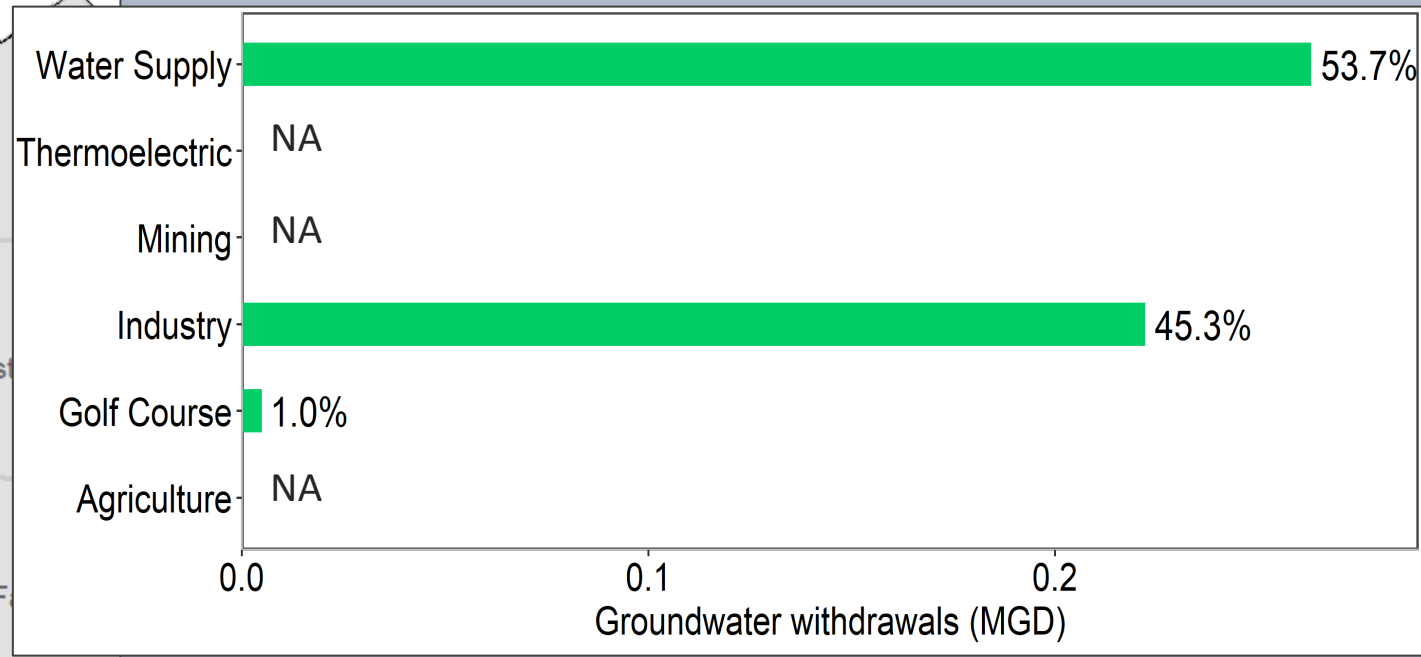
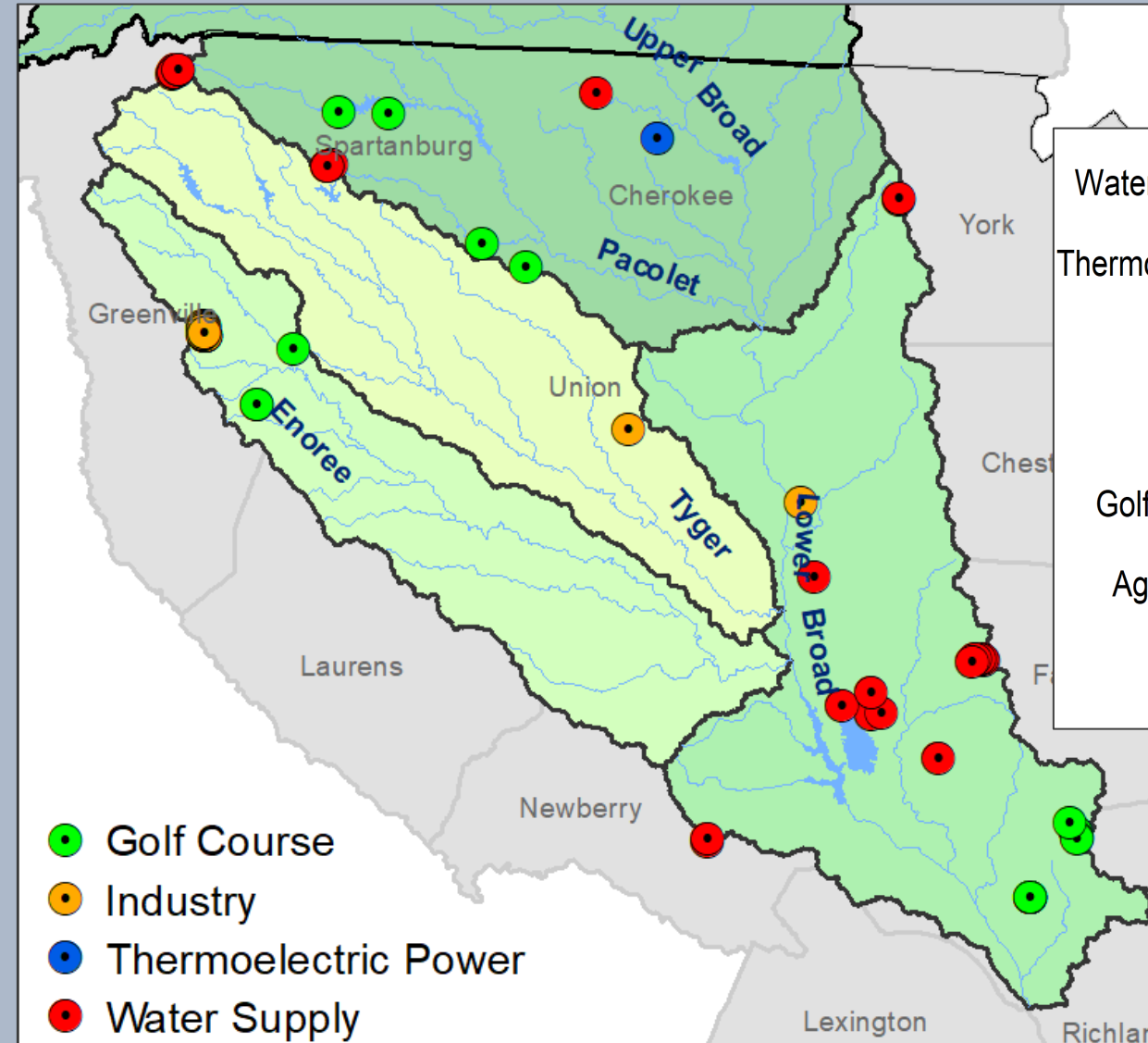


Reported Surface Water Withdrawals by Category in 2021





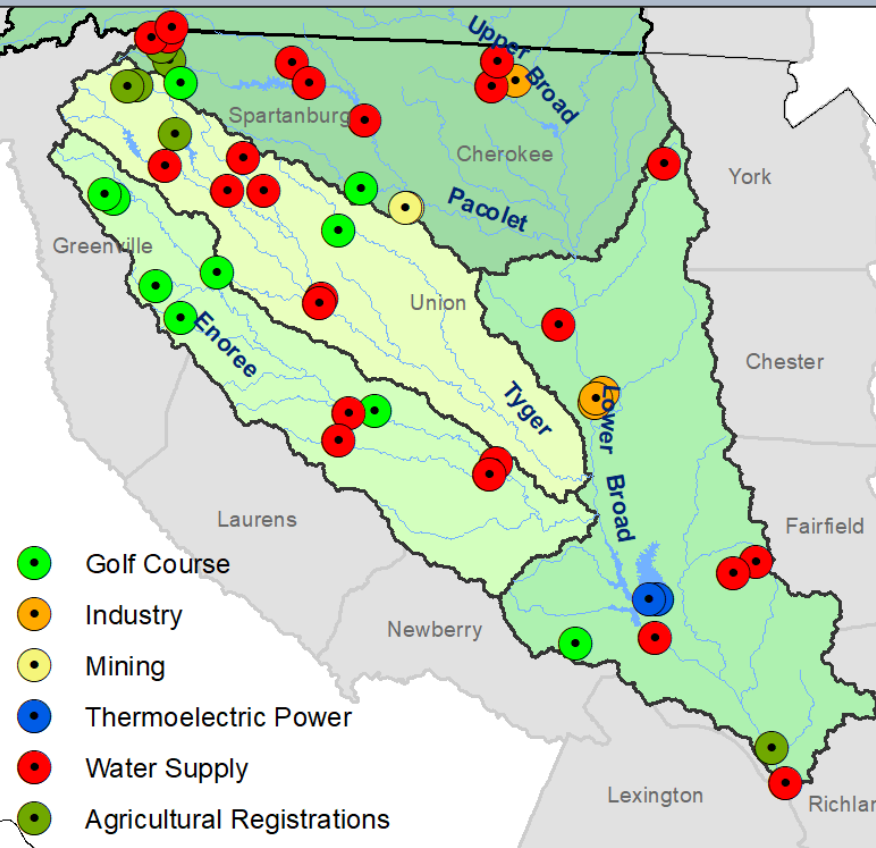
Reported Groundwater Withdrawals by Category in 2021



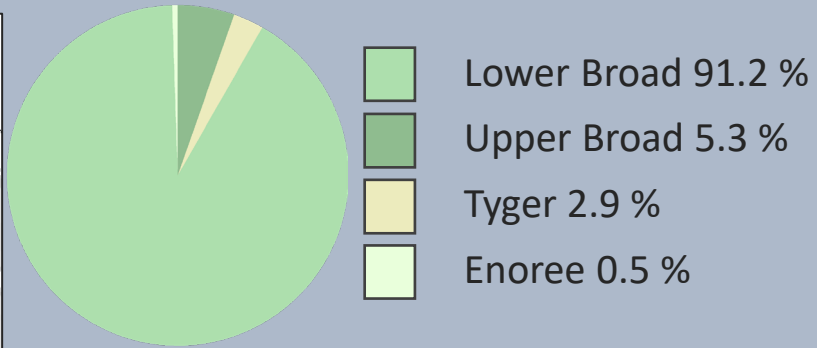
Note: Cherokee Cogeneration Partners LLC has Thermal power GW intake in Broad but no reported withdrawal in 2021.



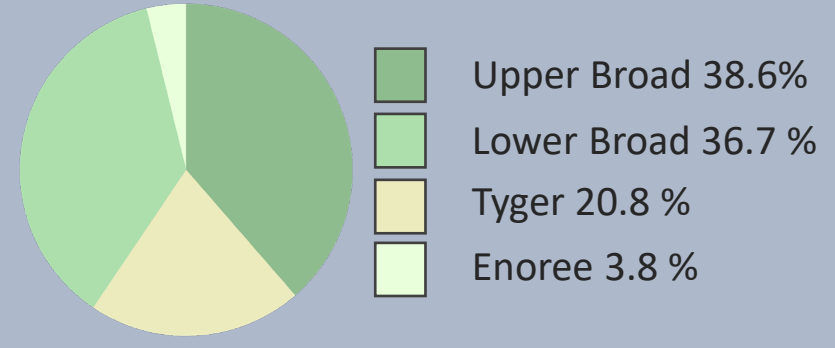
Reported Surface Water Withdrawals by Sub-Basin in 2021



Excluding Hydroelectric Power



Excluding Power



Excluding Power

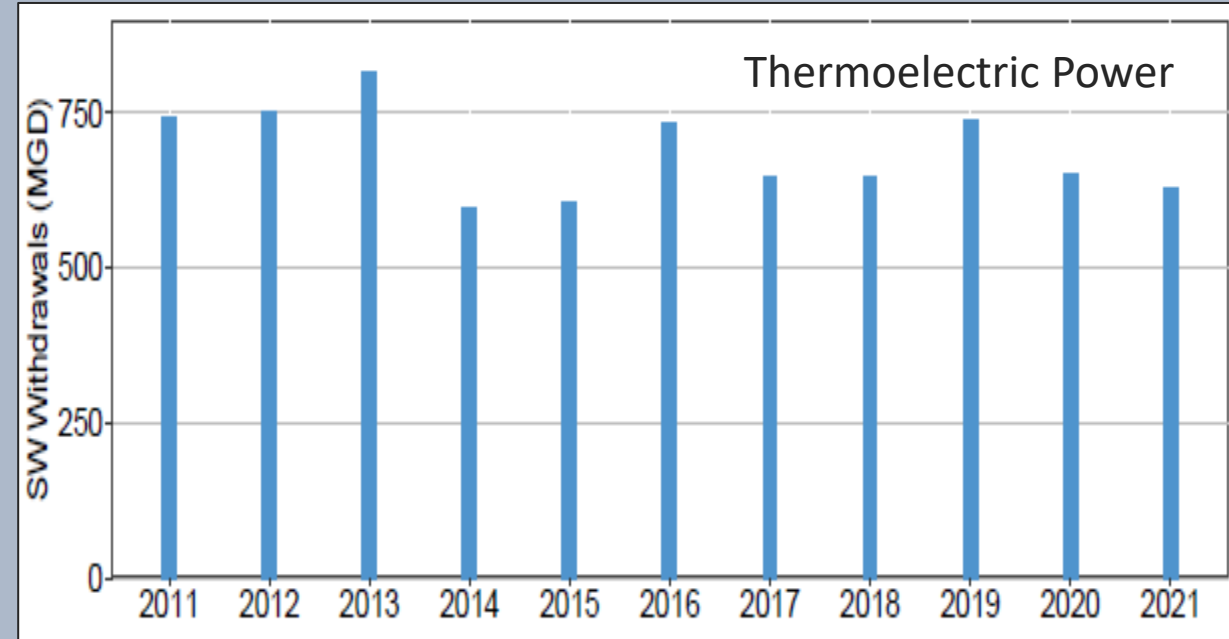
Sub-basin	Percent of total SW withdrawal (%)					Total SW withdrawal (MGD)
	WS	IN	GC	Ag	MI	
Upper Broad	92.7	7.2	< 0.05	< 0.05	0.1	38.9
Lower Broad	98.8	0.3	0.1	0.7	--	37.1
Tyger	99.7	--	0.2	0.0	--	21.0
Enoree	84.8	--	15.2	--	--	3.9



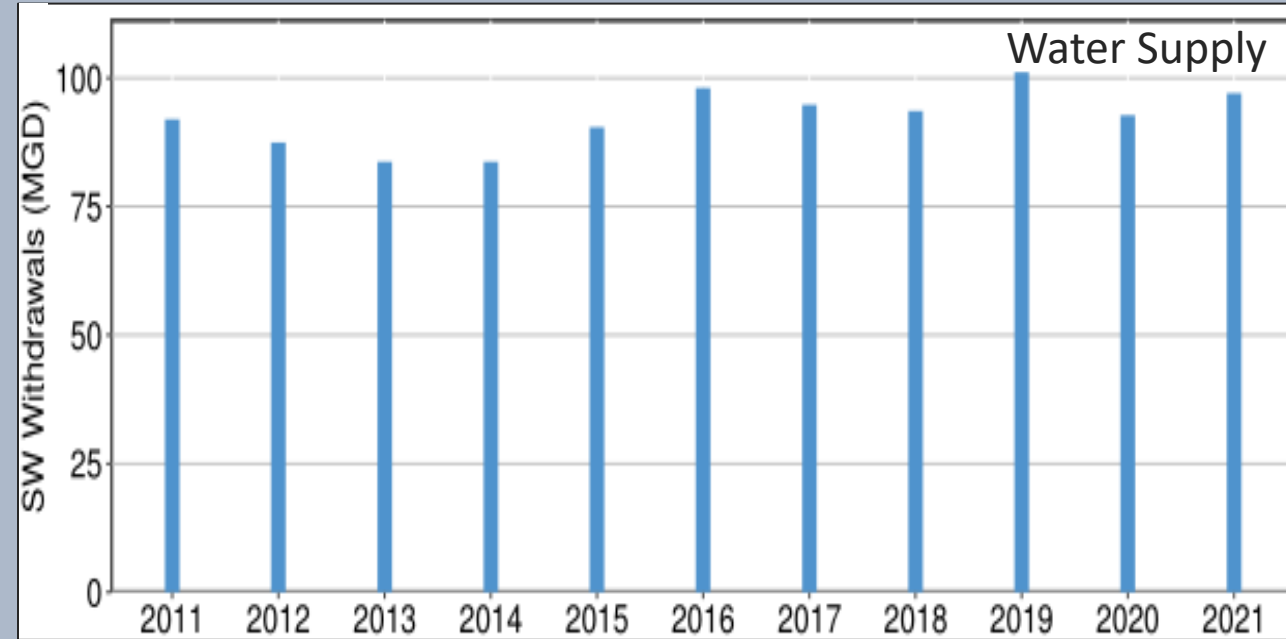
Reported Surface Water Withdrawal by Categories



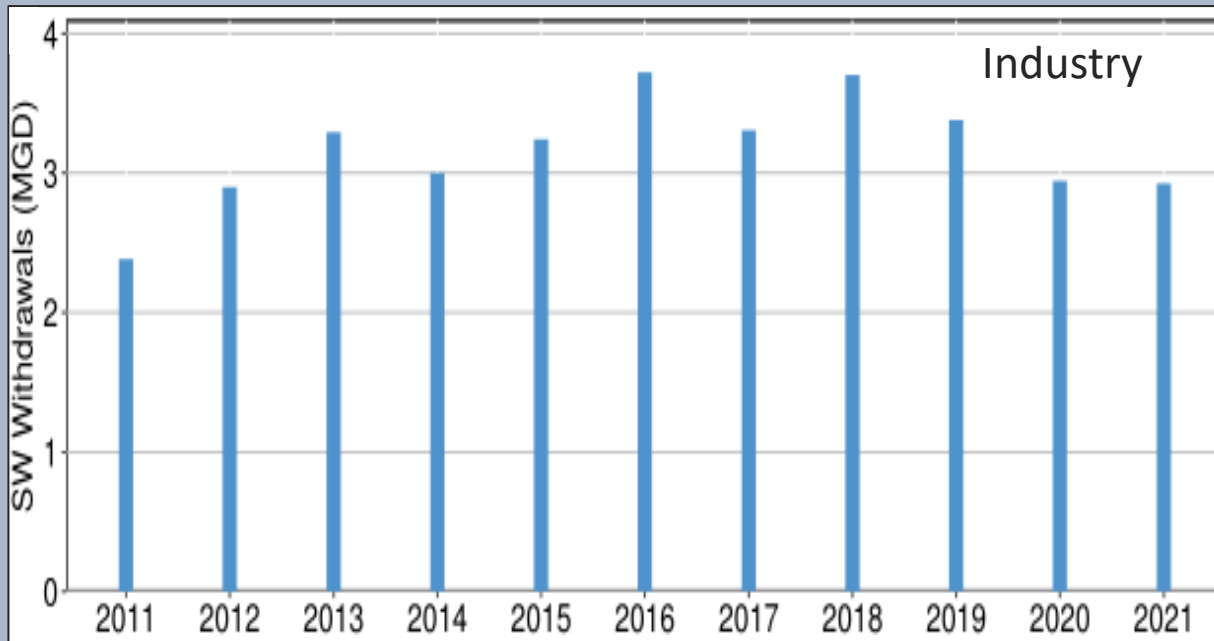
Thermoelectric Power



Water Supply

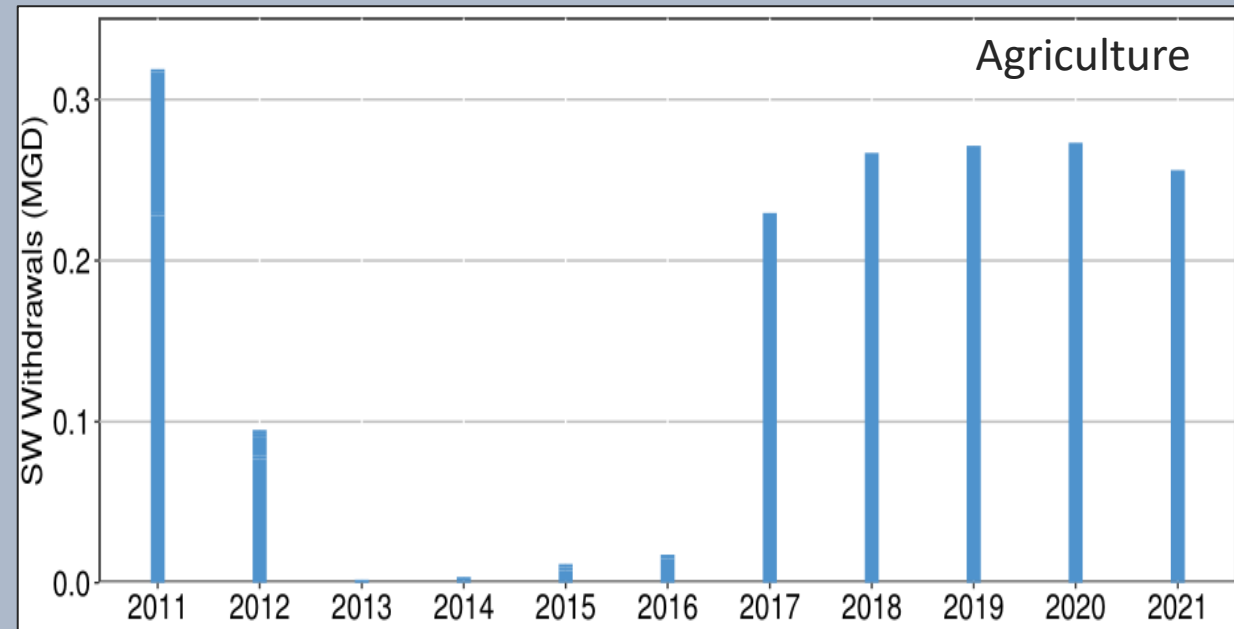
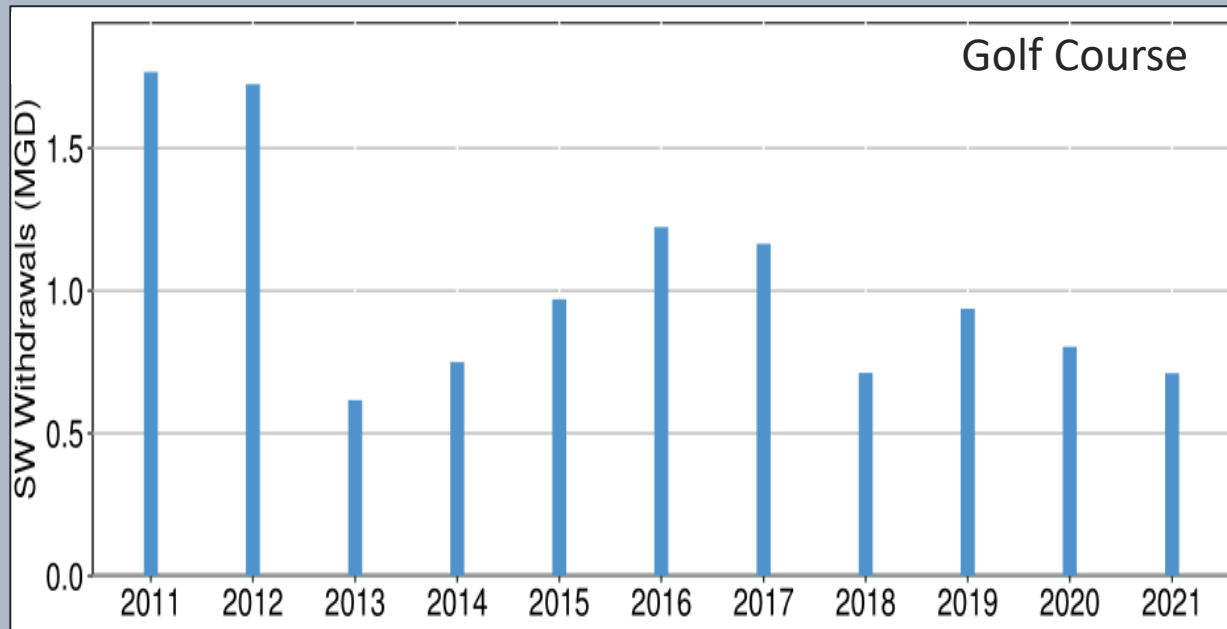


Industry

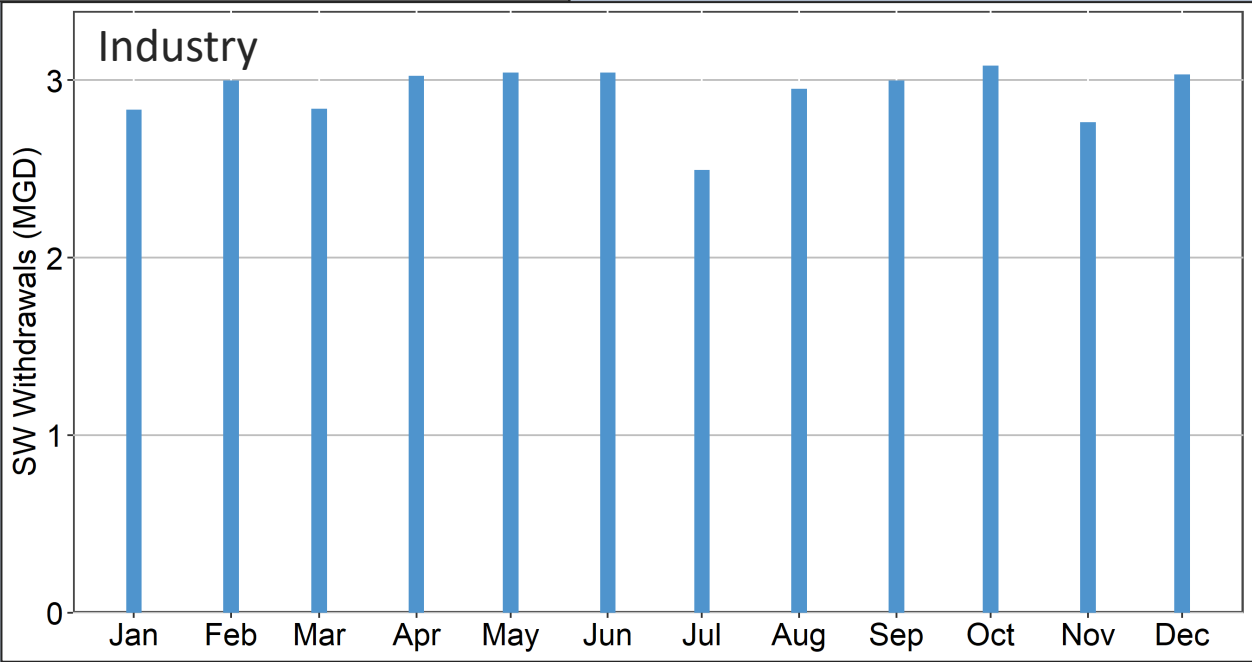
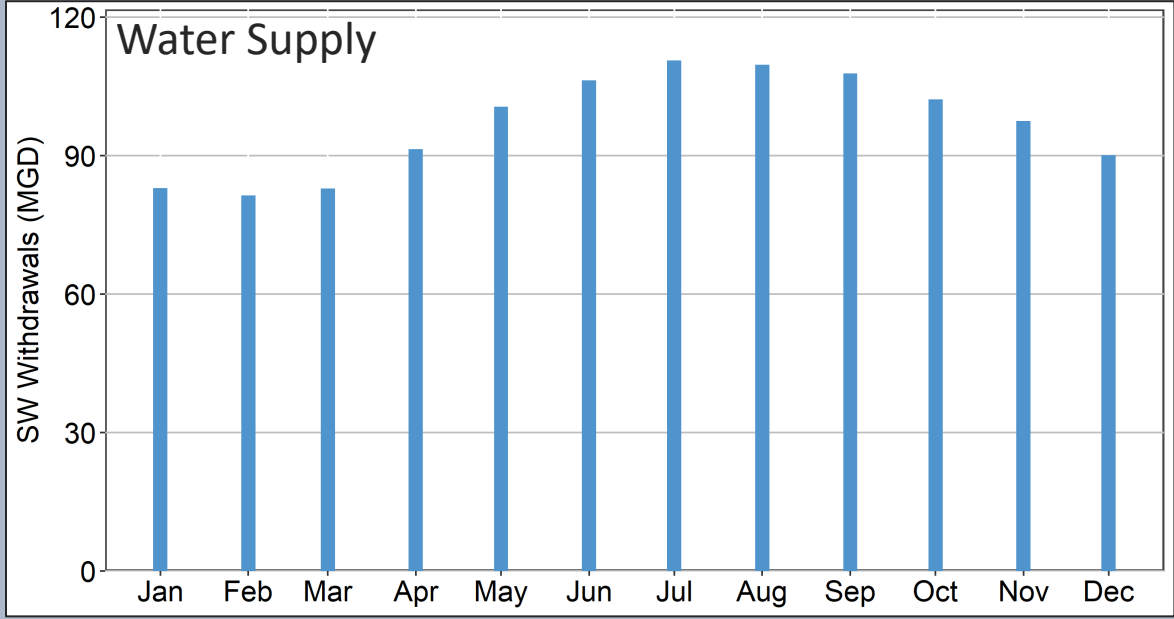
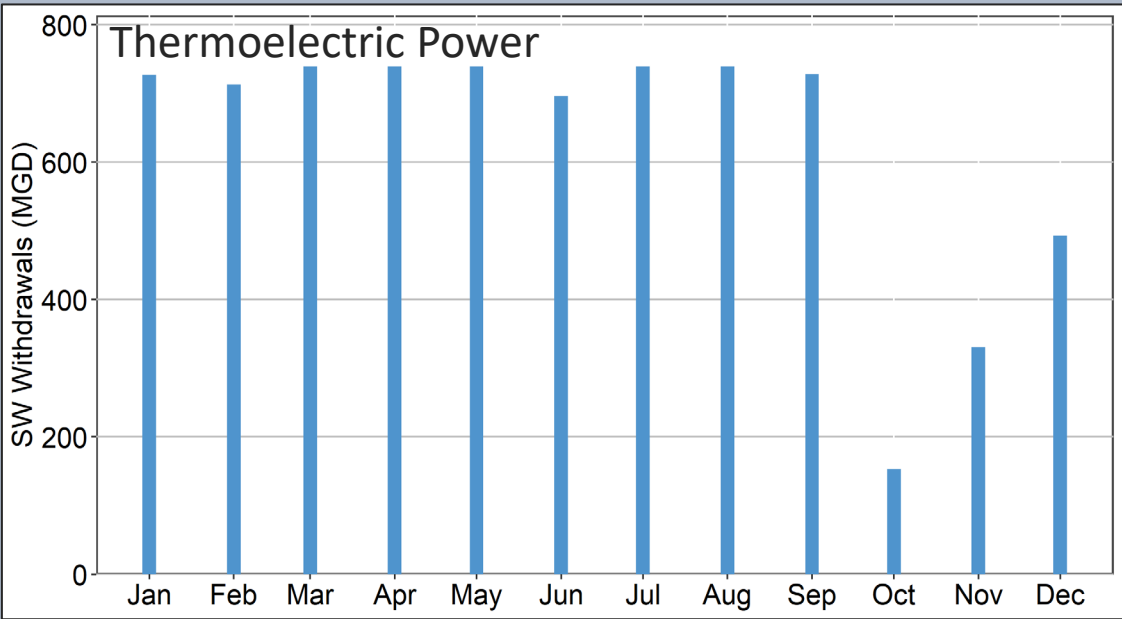




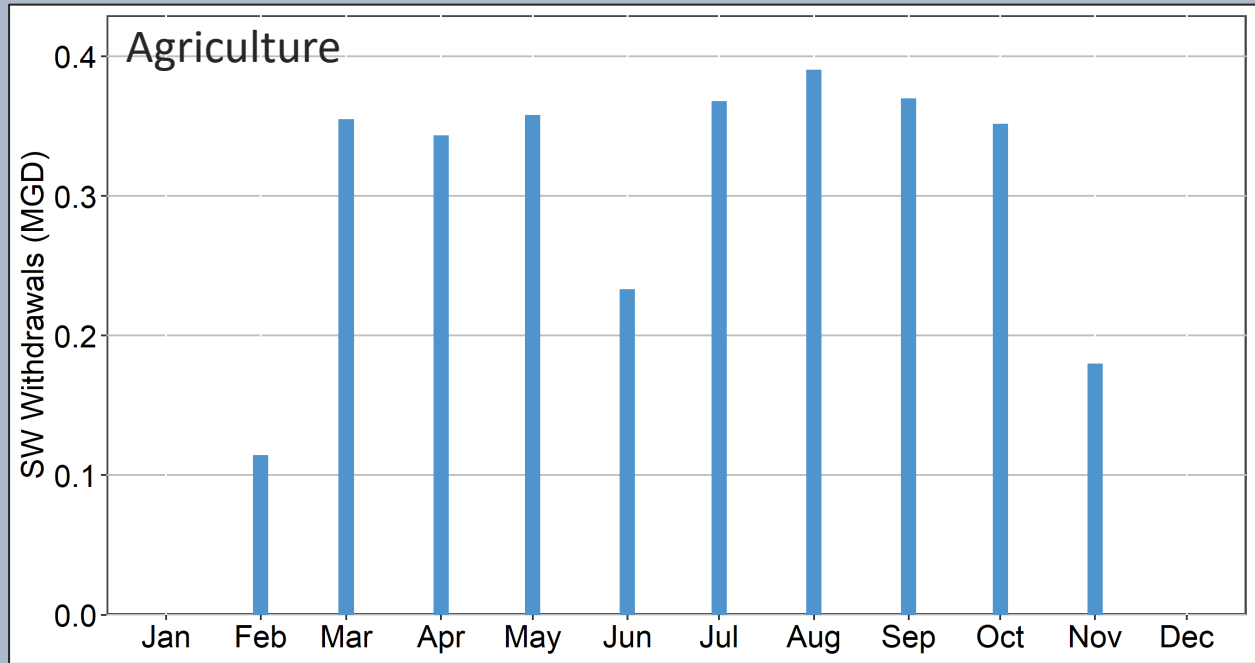
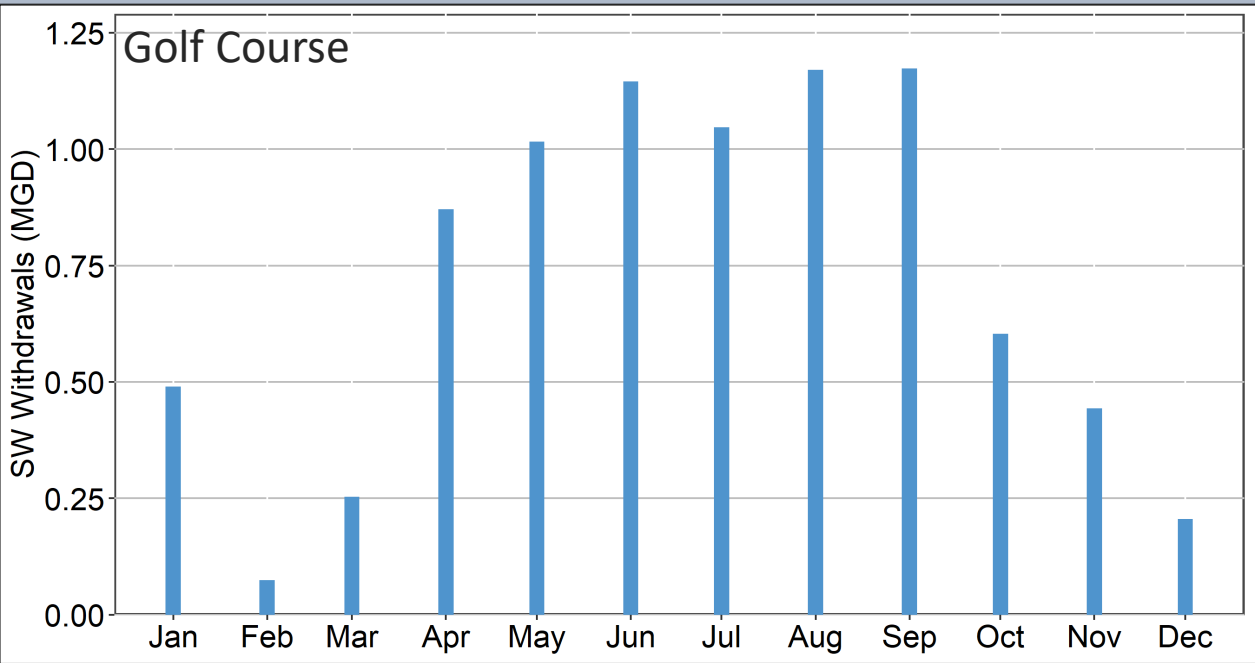
Reported Surface Water Withdrawal by Categories (Continued)



Reported 2021 Monthly Surface Water Withdrawal by Categories

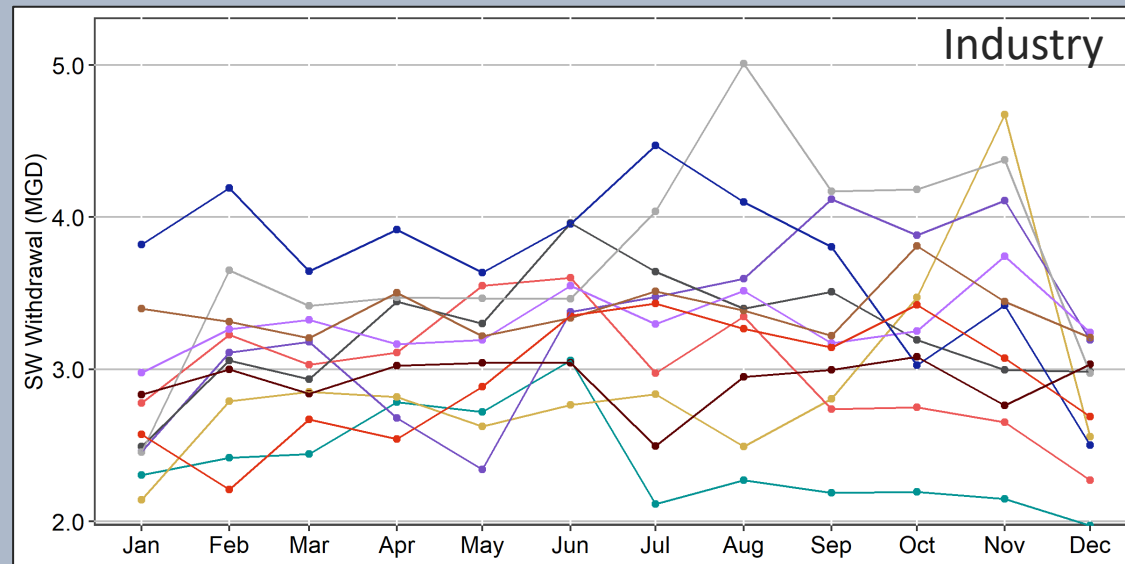
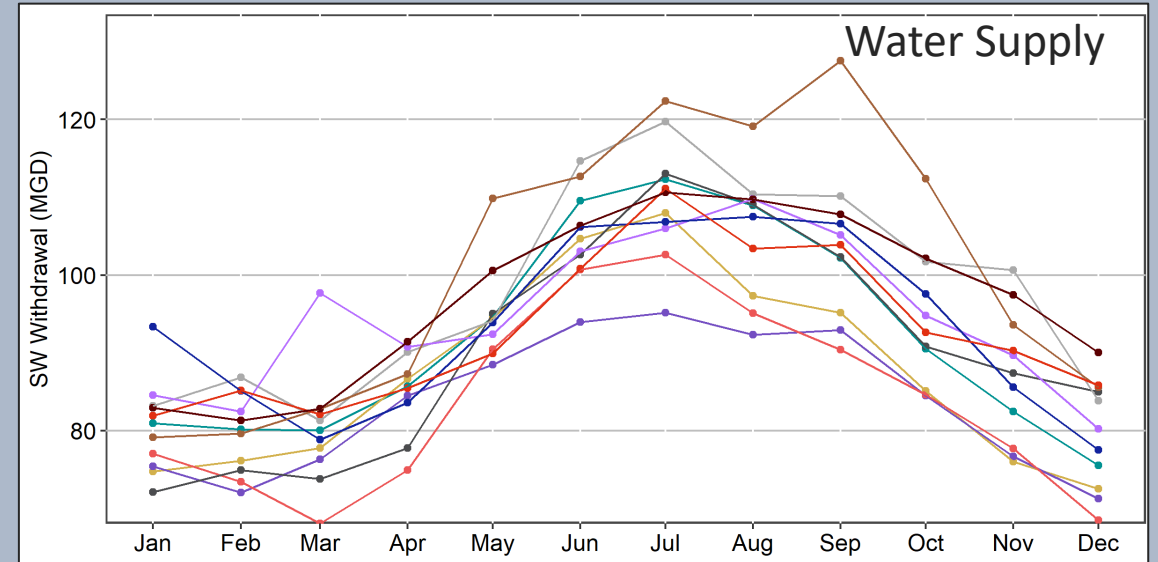
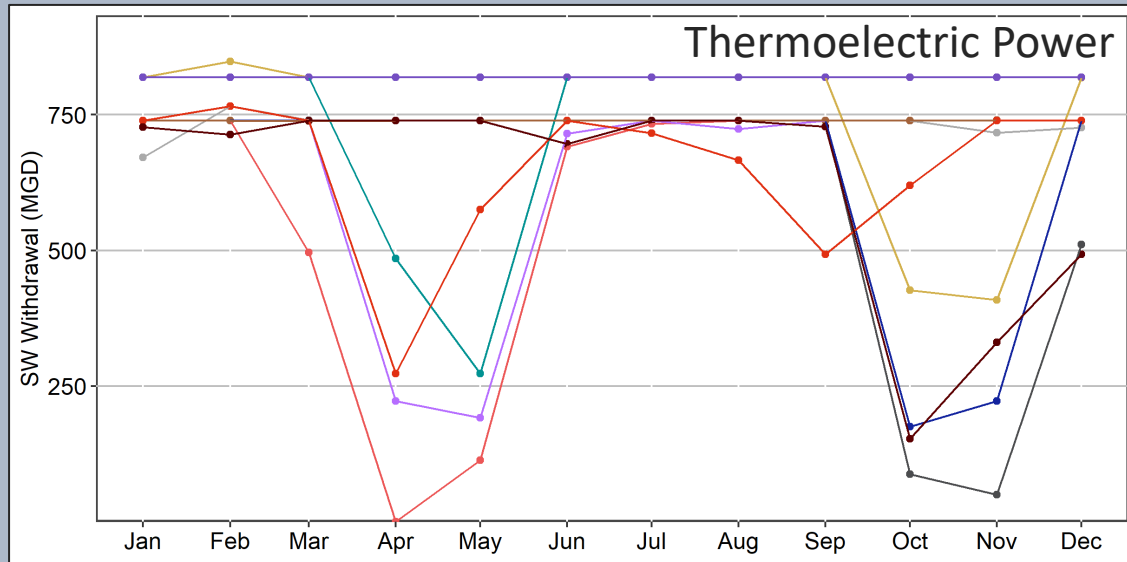


Reported 2021 Monthly Surface Water Withdrawal by Categories (Continued)



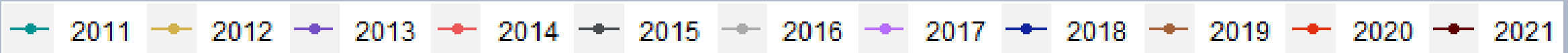
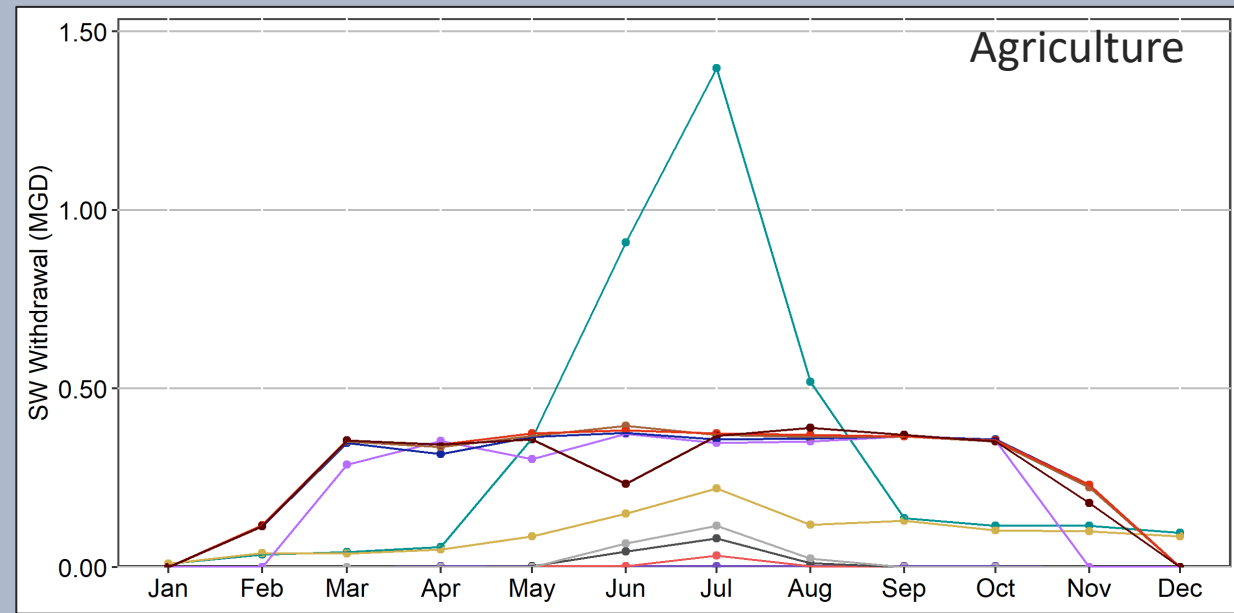
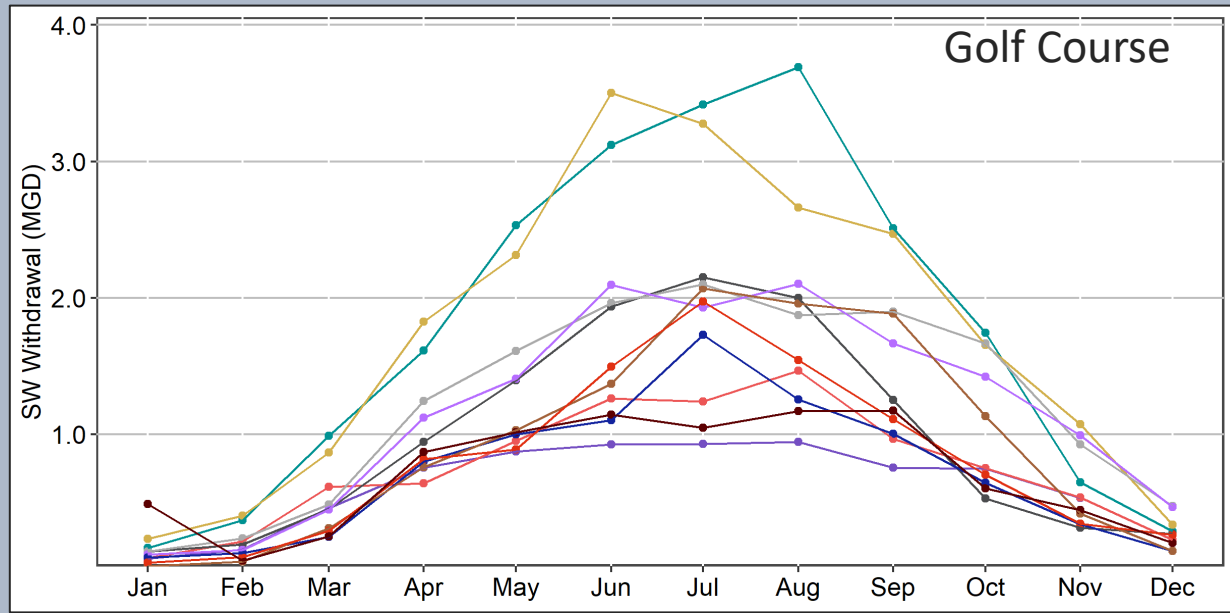


Reported Monthly Surface Water Withdrawal by Categories





Reported Monthly Surface Water Withdrawal by Categories (Continued)



Questions?

