

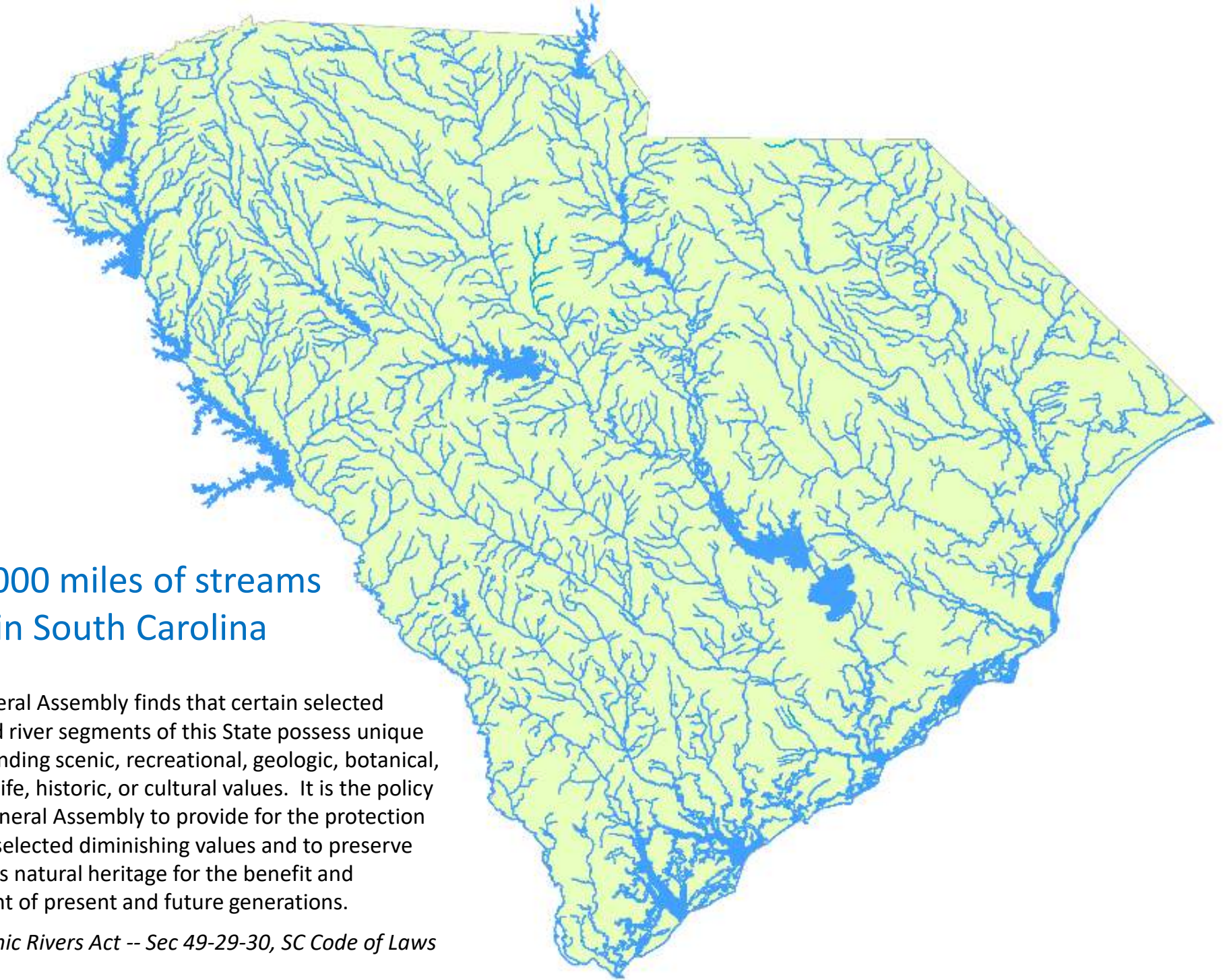


Middle & Lower Saluda

S.C. Scenic Rivers

Bill Marshall
S.C. Department of Natural Resources





30,000 miles of streams in South Carolina

The General Assembly finds that certain selected rivers and river segments of this State possess unique or outstanding scenic, recreational, geologic, botanical, fish, wildlife, historic, or cultural values. It is the policy of the General Assembly to provide for the protection of these selected diminishing values and to preserve the state's natural heritage for the benefit and enjoyment of present and future generations.

- *S.C. Scenic Rivers Act -- Sec 49-29-30, SC Code of Laws*

S.C. Scenic Rivers Act

Provisions & Directives of the 1989 Act:

- State Scenic Rivers Program -- SCNDR as management agency
- Inventory and study of rivers -- identify rivers with unique or outstanding values
- Designation of scenic rivers – eligibility study, public meetings, agency approvals, and legislation**
- Advisory councils – assist and advise DNR on protection and management of designated scenic rivers
- River management plans
- Riparian land acquisition -- tax incentives for land donations
- The provisions "compliment and are part of the State Water Plan"

*** Under the 1974 Scenic Rivers Act, the Middle Saluda was designed by the SC Water Resources Commission and not by legislation*

State Scenic Rivers Program

Purpose -- S.C. Scenic Rivers Act:

- Protect unique, outstanding resource values of S.C. rivers -- scenic, recreational, geologic, botanical, fish, wildlife, historic, and cultural

Approach:

- Non-regulatory. Community-based partnerships for river conservation & stewardship
- Advisory councils & management plans
- Tax incentives for land donations (fee simple or easements)

Project areas:

- Designated State Scenic Rivers
- River Corridor & Watershed Planning areas



State Scenic Rivers Program

Program Results:

- Inventory & study – S.C. Rivers Assessment
- Designations – 10 State Scenic Rivers
 - Eligible but not designated – Congaree, Little Pee Dee, Edisto, Whitewater and Thompson
 - Unfulfilled Scenic River Requests – at least 5 rivers
- River corridor & watershed plans
 - Lower Saluda, Catawba, Edisto, and Reedy
- Project-level actions and outcomes by DNR & partners



South Carolina State Scenic Rivers

Designated State Scenic Rivers



400 river miles

1% of the 30,000 stream miles

11% of 3,600 river miles

1. Middle Saluda River
2. Little Pee Dee River
3. Lower Saluda River
4. Broad River
5. Lynch's River
6. Ashley River
7. Black River
8. Great Pee Dee River
9. Little Pee Dee River- Dillon
10. Catawba River

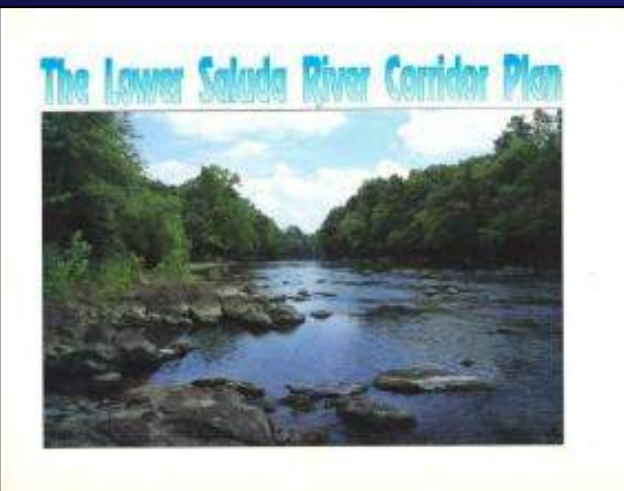
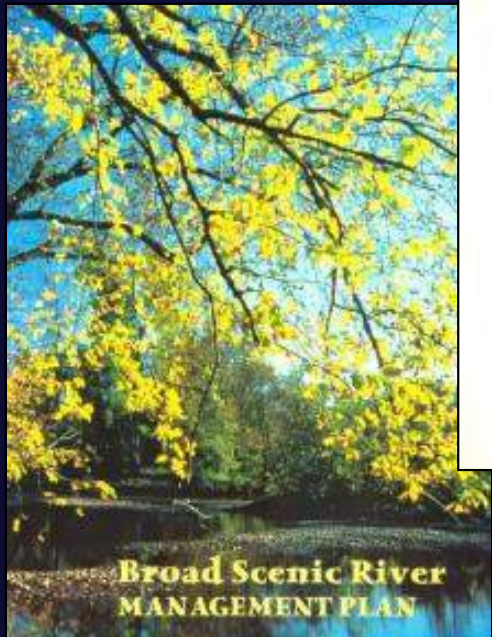
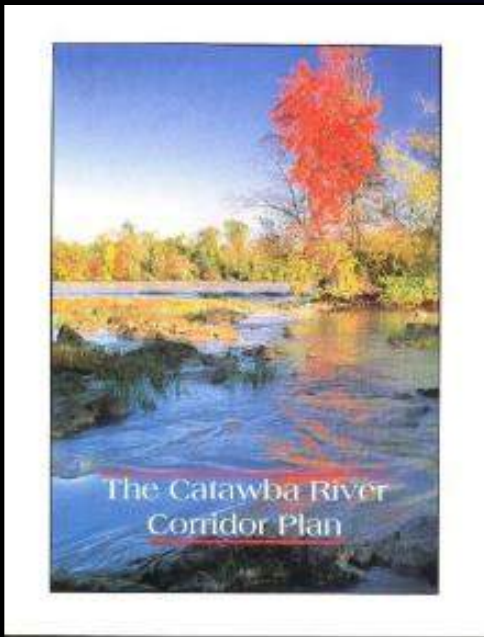
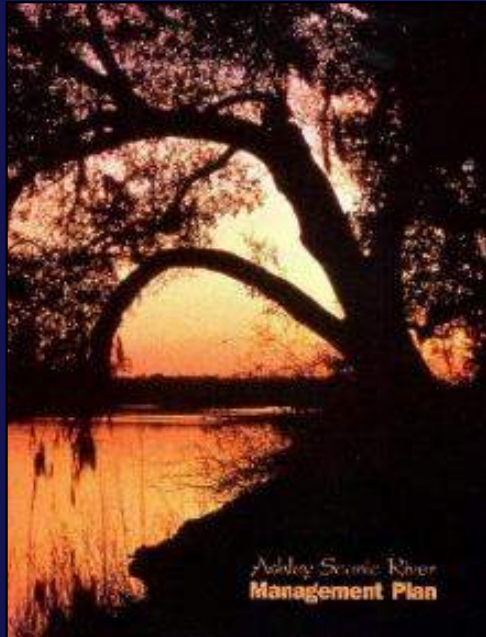
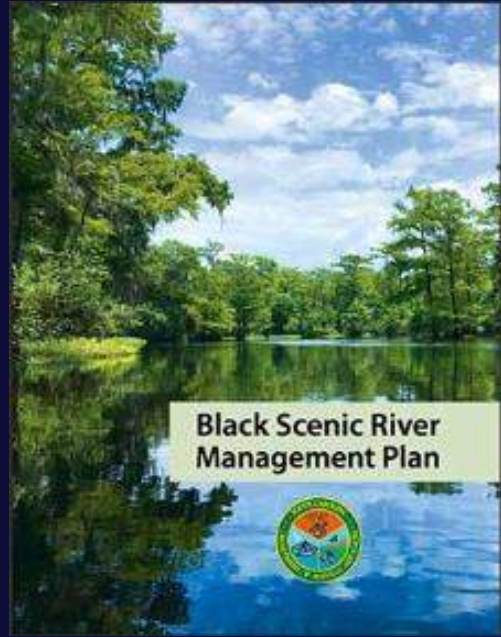
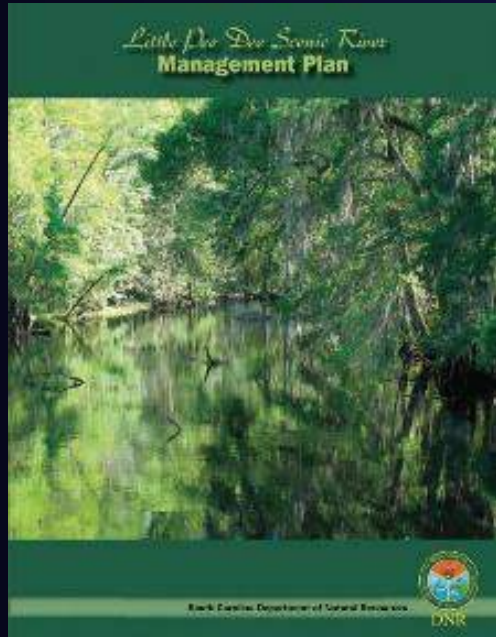
Legend

-  State Scenic Rivers
-  Major Rivers

0 10 20 40 Miles



River management plans



Middle Saluda Scenic River

Outstanding river values:

- Inland fisheries
- Wildlife Habitat
- Recreational fishing
- Natural Features
- Water Quality



Lower Saluda Scenic River

Outstanding river values:

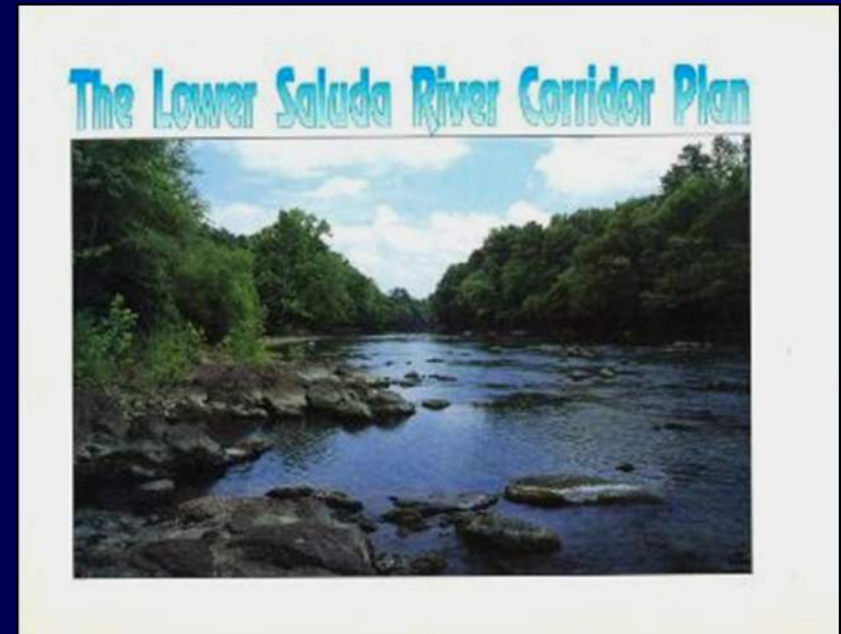
- Inland fisheries
- Recreational fishing
- Whitewater boating



Lower Saluda River Corridor Plan & Corridor Plan Update

River Interests/Issues, Goals, Recommendations

- Resource protection
 - Protection of riparian lands, habitat
 - Protect, enhance recreational fishery
 - Enhance instream flows
 - Reduce, eliminate pollution sources
- Public access & facilities
 - Saluda River Greenway Trails
- River-user safety info/alert system
- Law enforcement – litter, trespass, etc.
- Saluda Hydro FERC licensing



State Scenic River Projects

Project-level actions & outcomes:

- Engage with public permitting and local planning
- Corridor plans to enhance public recreational access
- Landowner outreach, promote conservation practices
- River festivals, public outreach & education
- River safety awareness and law enforcement
- Water trails & trail guides
- Land protection
- Volunteer monitoring of water quality
- Trash cleanups

*South Carolina Rivers -
Treasures from mountains to sea*



End