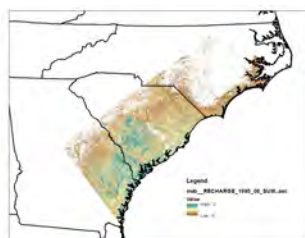
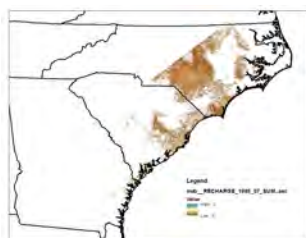
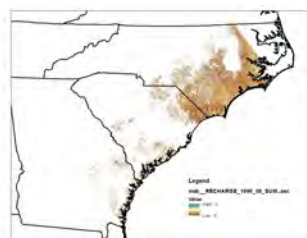


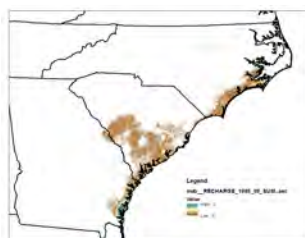
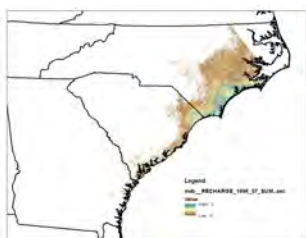
* Hurricane Allison



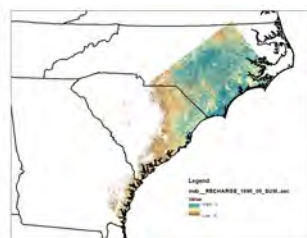
* Hurricane Erin

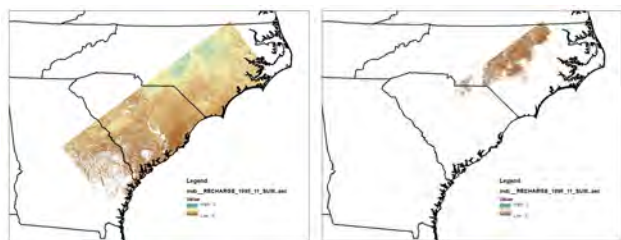


* Hurricane Bertha

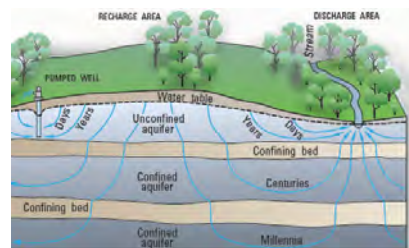


* Hurricane Fran



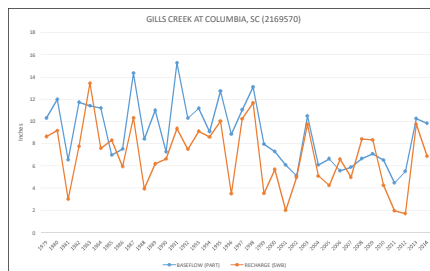
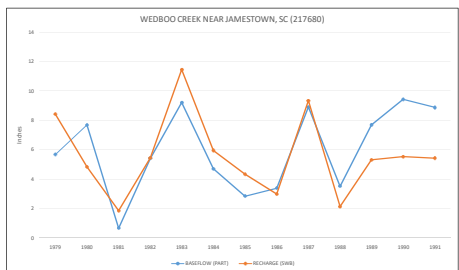
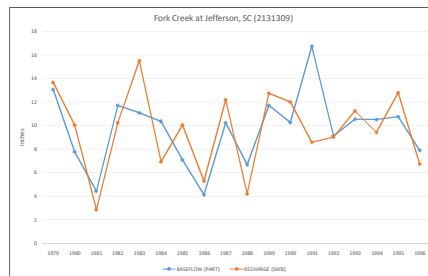
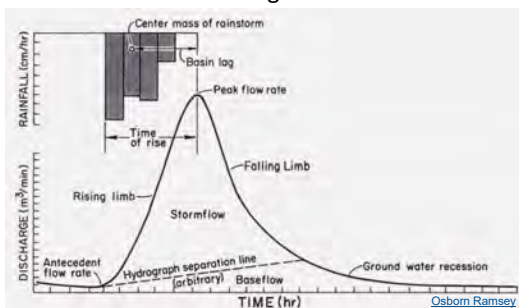


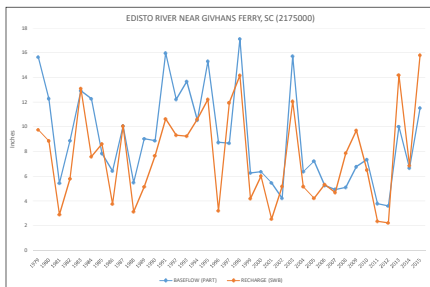
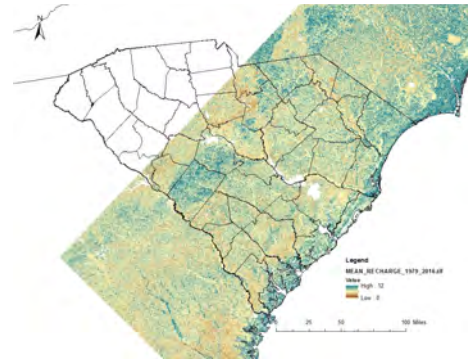
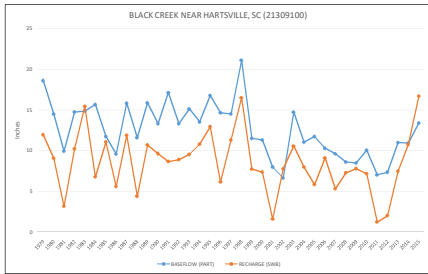
Checking the Model Results



Source: USGS

Determining Baseflow





NEXT STEPS

- Modify model to run using transient land cover – Mark Nardi USGS
- Input model outputs to GW flow model- Bruce Campbell
- Use downscaled global climate models (IPCC) and land use change modeling (NC State -Georgina Sanchez)to assess potential impacts on groundwater recharge / groundwater system



CONTACT US

Alex Butler
butlerap@dhec.sc.gov

Stay Connected

