

CITY OF COLUMBIA, S.C.
 DEPARTMENT OF UTILITIES AND ENGINEERING

THIS MAP OR PLAN IS THE PRODUCT OF COMPILATION, OR WAS PRODUCED BY OTHERS. IT IS PROVIDED FOR INFORMATION ONLY AND THE CITY OF COLUMBIA MAKES NO REPRESENTATIONS AS TO ITS ACCURACY. ITS USE WITHOUT FIELD VERIFICATION IS AT THE SOLE RISK OF THE USER.

GRAPHIC SCALE IN FEET
 SCALE: 1" = 30'

NOTES:
 1. OTHER UTILITY CROSSINGS MAY EXIST THAT ARE NOT SHOWN ON THIS PROFILE.
 2. ALL SHOWN PIPE LENGTHS ARE CENTER TO CENTER OF STRUCTURES.

COX AND DINKINS
 ENGINEERS ARCHITECTS AND SURVEYORS
 724 BELLE MEAD BLVD.
 COLUMBIA, SC 29209
 803.749.0128
 COXANDINKINS.COM

REGISTERED PROFESSIONAL ENGINEER
 No. 4590

REGISTERED PROFESSIONAL SURVEYOR
 No. 12890

REGISTERED PROFESSIONAL ENGINEER
 No. 12890

REGISTERED PROFESSIONAL SURVEYOR
 No. 12890

CERTIFICATE OF AUTHORIZATION SEAL

NO.	DATE	DESCRIPTION

PROJECT: COLUMBIA HOUSING
 CINDY HERRERA
 SVP OF DEVELOPMENT
 1917 HARDEN STREET
 COLUMBIA, SC 29208

943-810-5073

email: cherrera@coxandinkins.com

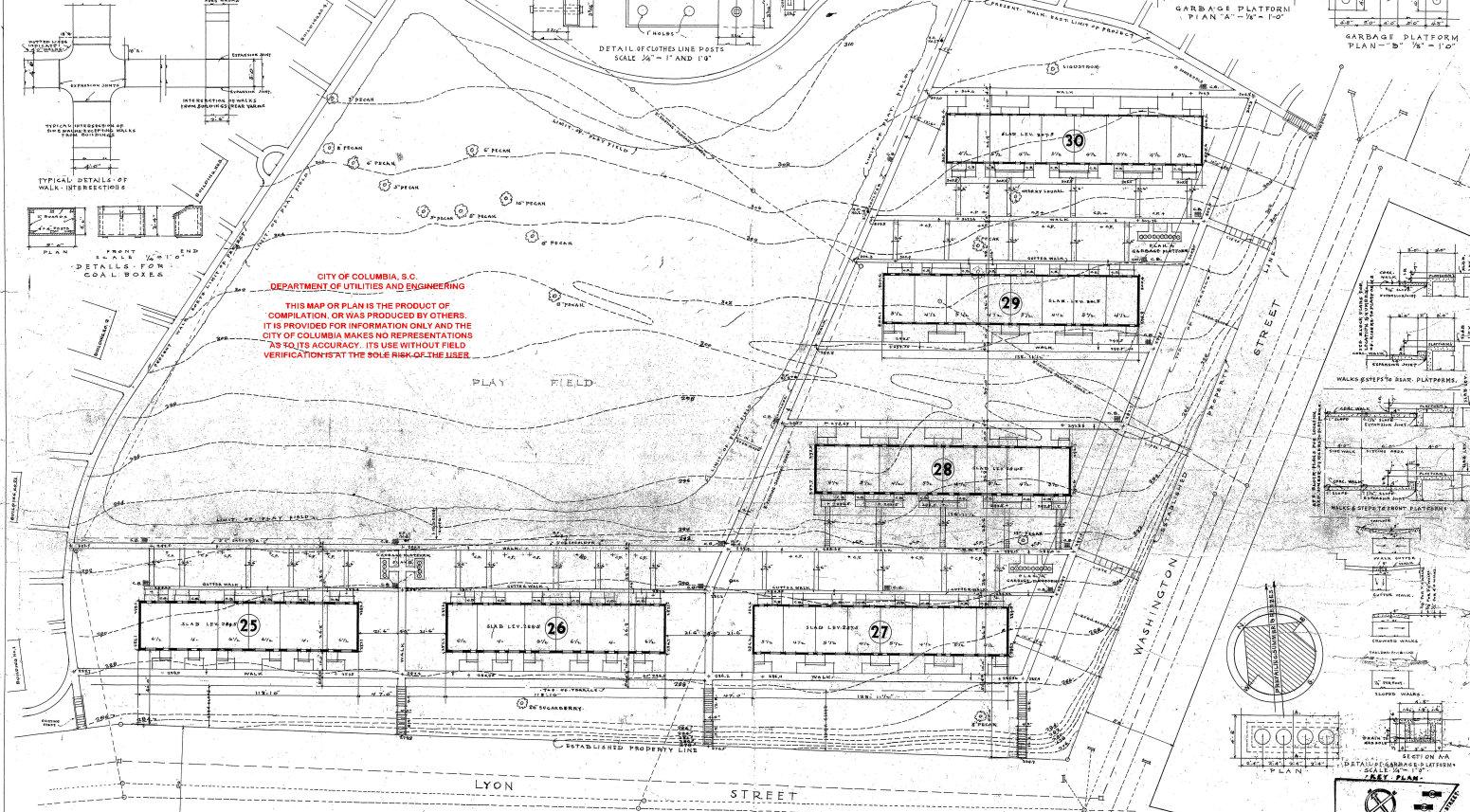
PROJECT NO: 1904-001
 SHEET NO: 30/31

THE OAKS AT ST. ANNA'S PARK
 LOCATED IN THE CITY OF COLUMBIA
 RICHLAND COUNTY, SOUTH CAROLINA

SANITARY SEWER PROFILES

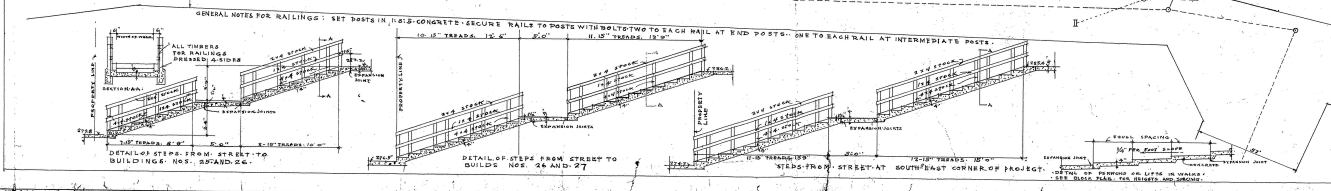
DATE: 7/9/2021
 DRAWN BY: 486-02C
 CHECKED BY: 486-02C
 SHEET NO: C28 of 55

SCHEDULE OF BUILDINGS					
BLD. NUMBERS	4 RM FLATS	4 1/2 BATHS UNITS	5 1/2 BATHS UNITS	NO. UNITS	SQ. FEET
25 AND 26	4	16	8	12	2
27, 28, 29, 30	16	16	16	32	4
TOTALS	4	32	24	44	6
ROOM TOTALS	16	72	88	82	228
AVERAGE NUMBER OF ROOMS PER DWELLING UNIT				6.15 ROOMS	



CITY OF COLUMBIA, S.C.
 DEPARTMENT OF UTILITIES AND ENGINEERING

THIS MAP OR PLAN IS THE PRODUCT OF COMPLETION, OR WAS PRODUCED BY OTHERS. IT IS PROVIDED FOR INFORMATION ONLY AND THE CITY OF COLUMBIA MAKES NO REPRESENTATIONS AS TO ITS ACCURACY. ITS USE WITHOUT FIELD VERIFICATION IS AT THE SOLE RISK OF THE USER.

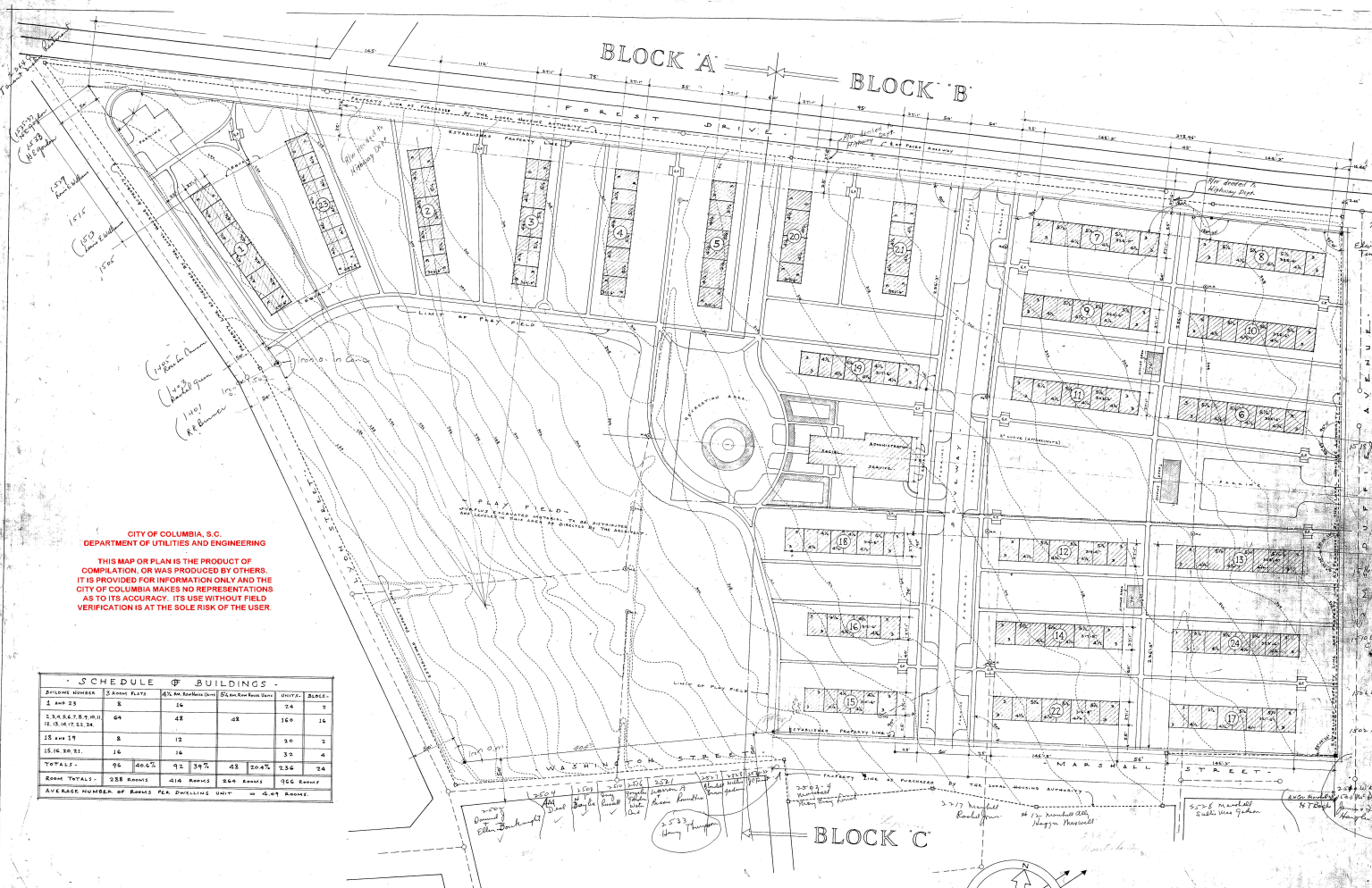


SITE PLAN
 GONZALES GARDENS EXTENSION
 LOW RISE HOUSING PROJECT, COLUMBIA, S.C. 29204
 THE HOUSING AUTHORITY OF THE CITY OF COLUMBIA, S.C.
 PROJECT PLANNING DIVISION

DATE: _____
 DRAWN BY: _____
 CHECKED BY: _____
 APPROVED BY: _____

SCALE: 1" = 10'

BLOCK 'A' BLOCK 'B'



CITY OF COLUMBIA, S.C.
DEPARTMENT OF UTILITIES AND ENGINEERING

THIS MAP OR PLAN IS THE PRODUCT OF
COMPILATION, OR WAS PRODUCED BY OTHERS.
IT IS PROVIDED FOR INFORMATION ONLY AND THE
CITY OF COLUMBIA MAKES NO REPRESENTATIONS
AS TO ITS ACCURACY. ITS USE WITHOUT FIELD
VERIFICATION IS AT THE SOLE RISK OF THE USER.

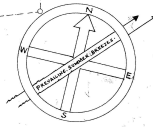
SCHEDULE OF BUILDINGS

BUILDING NUMBER	STORY FLOORS	AREA (SQ. FEET)	PLAN AREA (SQ. FEET)	UNITS	BLK.
1 AND 23	8	16	14	7	
1, 2, 3, 4, 5, 6, 7, 8, 9, 10, 11, 12, 13, 14	64	48	48	140	16
15 AND 17	8	12	12	3	4
15 AND 17	16	16	16	3	2
TOTALS -	96	92	92	143	24
ROOM TOTALS -	238 ROOMS	216 ROOMS	204 ROOMS	355 ROOMS	
AVERAGE NUMBER OF ROOMS PER DWELLING UNIT = 4.47 ROOMS					

DESIGN OF STREETS, DRIVEWAYS, PAVING, CURBS
AND WALKS DEDICATED FOR PUBLIC USE AND
LAYOUT OF ALL UTILITIES IN PUBLIC RECORDS
BY WAY ARE HEREBY APPROVED BY THE
CITY OF COLUMBIA, S.C.

W. J. THOMPSON, CITY ENGINEER.

NOTES:
1. THE DIMENSIONS LOCATED AT ANY BUILDING OR
JUNCTION THEREOF TO UNDETERMINED DISTANCES
OR TO THE PROPERTY LINE SHALL BE THE CONTRACTOR'S
RESPONSIBILITY TO APPROXIMATE THE INDICATED RELATIONSHIP TO
THE PROPERTY LINE. THE CONTRACTOR SHALL VERIFY THE
ACTUAL RELATIONSHIP TO THE PROPERTY LINE BY
MAKING THE PROPER ADJUSTMENTS ACCORDING TO THE SPECIFICATIONS.
THE WORK ON THIS SITE UNDER THE GENERAL CONTRACT
IS LIMITED TO THE AREA WITHIN THE "ESTABLISHED PROPERTY LINE"
WITH THE FOLLOWING EXCEPTIONS:
1. ALL CONTRACT VALUE AND PAYMENTS SHALL EXTEND BEYOND THE
"ESTABLISHED PROPERTY LINE" TO THE LINE OF THE CITY SIDEWALK.
2. ALL CONTRACT AND STORM SEWER VALUE LINES, GAS PIPING
SHALL EXTEND BEYOND THE "ESTABLISHED PROPERTY LINE" AND
CONNECT WITH CITY MAIN UTILITY LINES OFF THE "ESTABLISHED
PROPERTY LINE."



SITE PLAN
GONZALES GARDENS
LOW RENT HOUSING PROJECT, COLUMBIA, S.C. 29201
THE HOUSING AUTHORITY OF THE CITY OF COLUMBIA, S.C.
UNITED STATES HOUSING AUTHORITY

DATE: 11/15/67
SCALE: 1" = 40'

APPROVED BY: [Signature]
DATE: 11/15/67

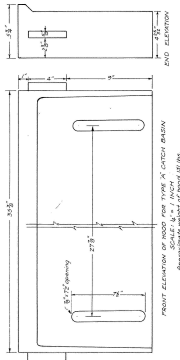
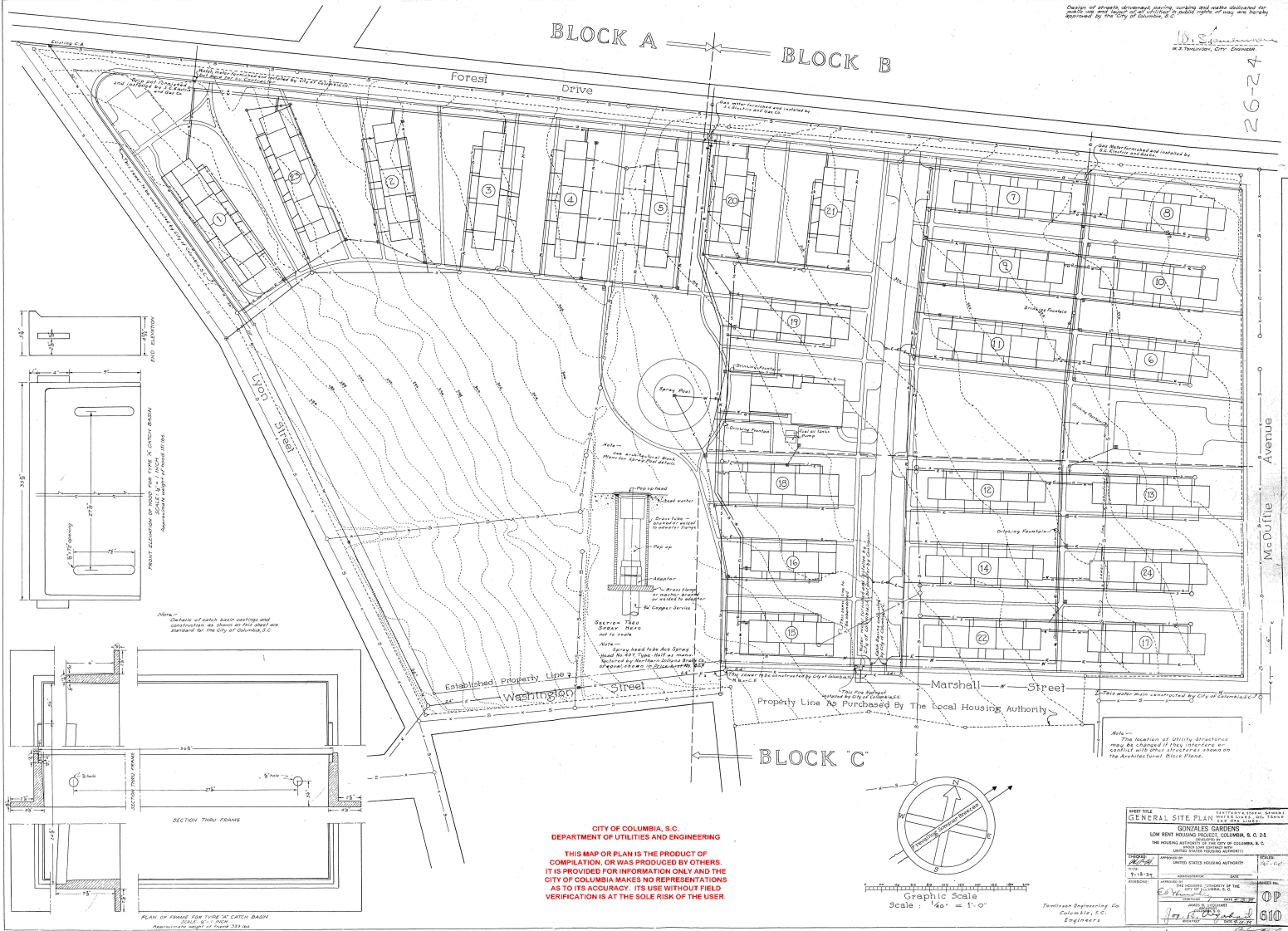
PROJECT NO. 1
SHEET NO. 2

City of Columbia 1967

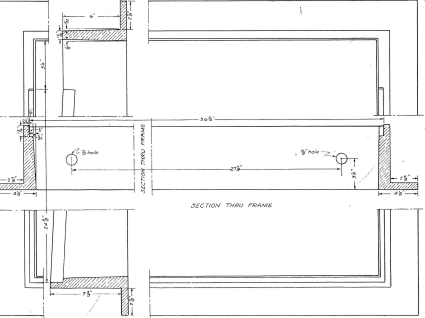
Design of streets, drainage, piping, utility and water obtained for this site and shown on this plan is subject to the approval of the City of Columbia, S.C.

10.5' 26-24
McDuffie Avenue

BLOCK A BLOCK B

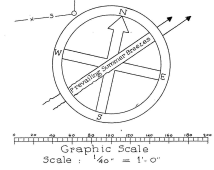


DETAILS OF CATCH BASIN CONSTRUCTION TO BE USED AS A STANDARD FOR THE CITY OF COLUMBIA, S.C.



PLAN OF FRAME FOR 30" CATCH BASIN SCALE 1/4" = 1'-0"

CITY OF COLUMBIA, S.C.
DEPARTMENT OF UTILITIES AND ENGINEERING
THIS MAP OR PLAN IS THE PRODUCT OF COMPILATION, OR WAS PRODUCED BY OTHERS. IT IS PROVIDED FOR INFORMATION ONLY AND THE CITY OF COLUMBIA MAKES NO REPRESENTATIONS AS TO ITS ACCURACY. ITS USE WITHOUT FIELD VERIFICATION IS AT THE SOLE RISK OF THE USER.



GENERAL SITE PLAN			
GONZALES GARDENS			
LOW RENT HOUSING PROJECT, COLUMBIA, S.C. 214			
THE HOUSING AUTHORITY OF THE CITY OF COLUMBIA, S.C.			
DATE	APPROVED BY	SCALE	PROJECT NO.
7-15-54	[Signature]	1/40" = 1'-0"	OP 610
DESIGNED BY		DRAWN BY	
[Signature]		[Signature]	
TERRANCE ENGINEERING CO. COLUMBIA, S.C. ENGINEERS			

26-24

Design of streets, sidewalks, paving, curbing and walks indicated for public use and layout of all utilities of public right of way are hereby approved by the City of Columbia, S.C.
W. S. [Signature]
W.S. [Signature] City Engineer

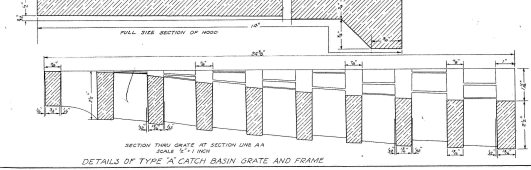
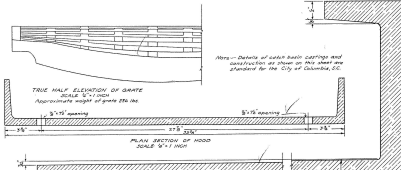
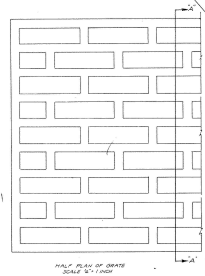
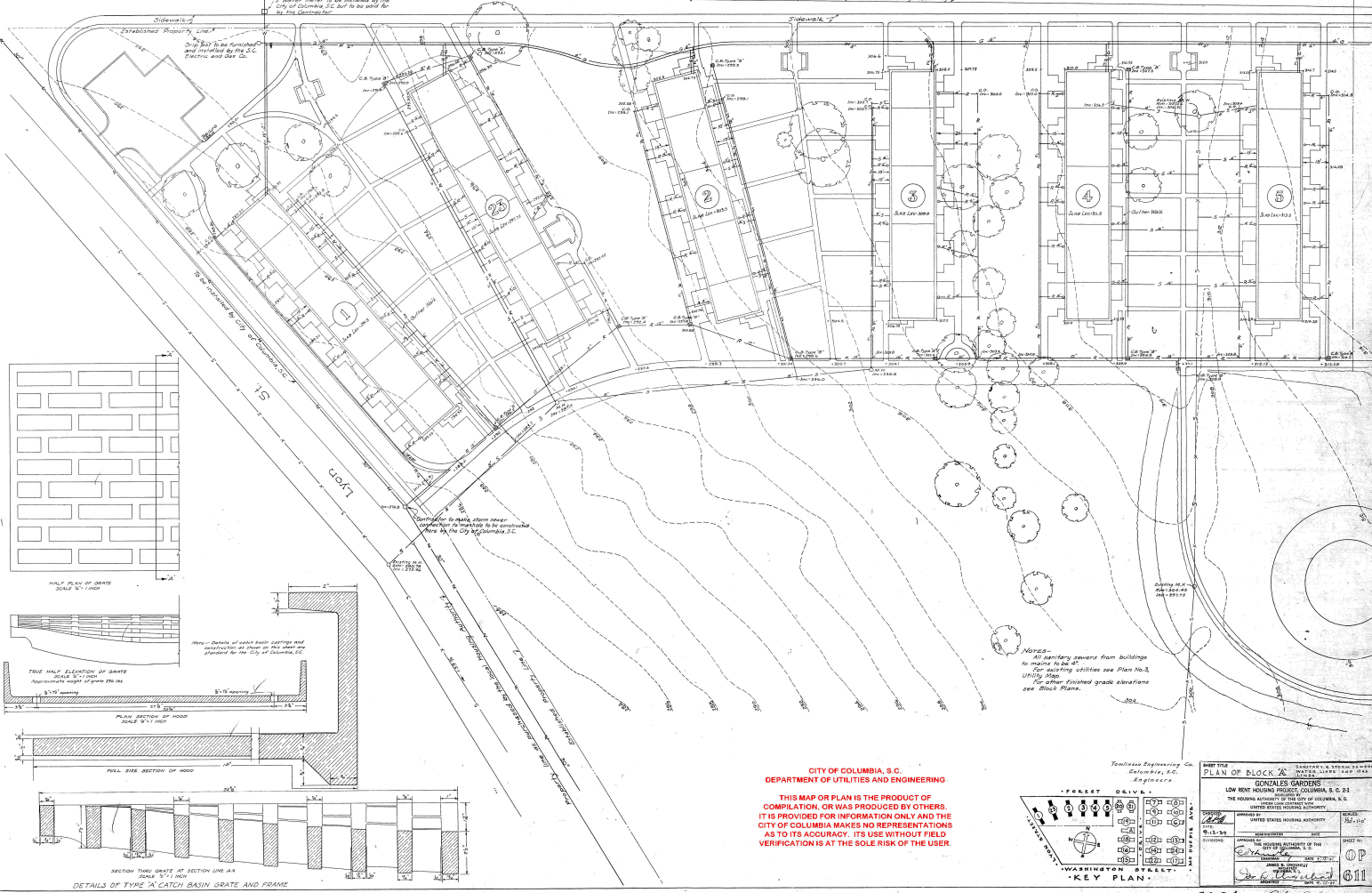
hb-9e

Forest Drive

of existing 20' concrete paving 7'

1" water meter to be installed by the City of Columbia, S.C. and to be paid for by the Rentor.

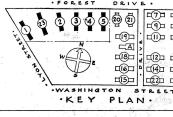
Property line as purchased by the local Housing Authority.



Notes - All sanitary sewers from buildings to main sewer are 4\"/>
for existing utilities see Plan No. 3, Utility 1900.
For other finished grade elevations see Block Plans.

CITY OF COLUMBIA, S.C.
DEPARTMENT OF UTILITIES AND ENGINEERING

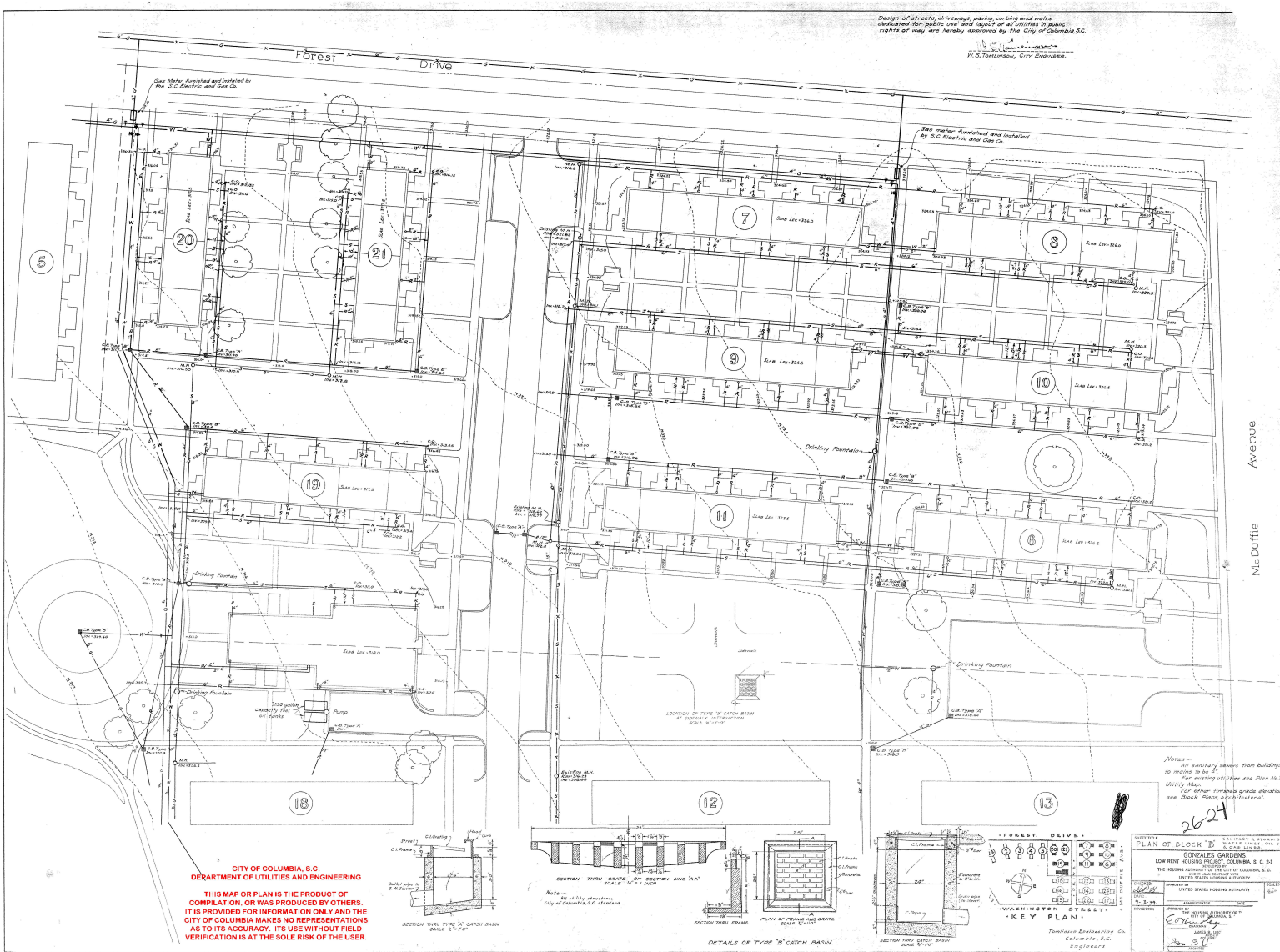
THIS MAP OR PLAN IS THE PRODUCT OF COMPILATION, OR WAS PRODUCED BY OTHERS. IT IS PROVIDED FOR INFORMATION ONLY AND THE CITY OF COLUMBIA MAKES NO REPRESENTATIONS AS TO ITS ACCURACY. ITS USE WITHOUT FIELD VERIFICATION IS AT THE SOLE RISK OF THE USER.



TITLE		SCALE	
PLAN OF BLOCK A		1" = 40'	
GONZALES GARDENS		1" = 40'	
LOW RENT HOUSING PROJECT, COLUMBIA, S.C. 21		1" = 40'	
THE HOUSING AUTHORITY OF THE CITY OF COLUMBIA, S.C.		1" = 40'	
DATE	DESIGNER	SHEET NO.	611
11-15-30	[Signature]	1	

Design of streets, driveways, paving, curbing and walls dedicated for public use and layout of all utilities in public rights of way are hereby approved by the City of Columbia, S.C.

W.S. Tolson, City Engineer



CITY OF COLUMBIA, S.C.
DEPARTMENT OF UTILITIES AND ENGINEERING

THIS MAP OR PLAN IS THE PRODUCT OF COMPILATION, OR WAS PRODUCED BY OTHERS. IT IS PROVIDED FOR INFORMATION ONLY AND THE CITY OF COLUMBIA MAKES NO REPRESENTATIONS AS TO ITS ACCURACY. ITS USE WITHOUT FIELD VERIFICATION IS AT THE SOLE RISK OF THE USER.

Notes—
 All secondary mains from buildings to mains 12 in. dia. or less.
 For existing utilities see Plan No. 12 Utility Map.
 For other finished grade elevations see Block Plans, architectural.

2624

PLAN OF BLOCK 5
 GONZALES GARDENS
 LOW RENT HOUSING PROJECT, COLUMBIA, S. C. 24
 THE ENGINEERING COMPANY OF COLUMBIA, S. C.
 UNITED STATES HOUSING AUTHORITY

APPROVED BY: [Signature]
 UNITED STATES HOUSING AUTHORITY

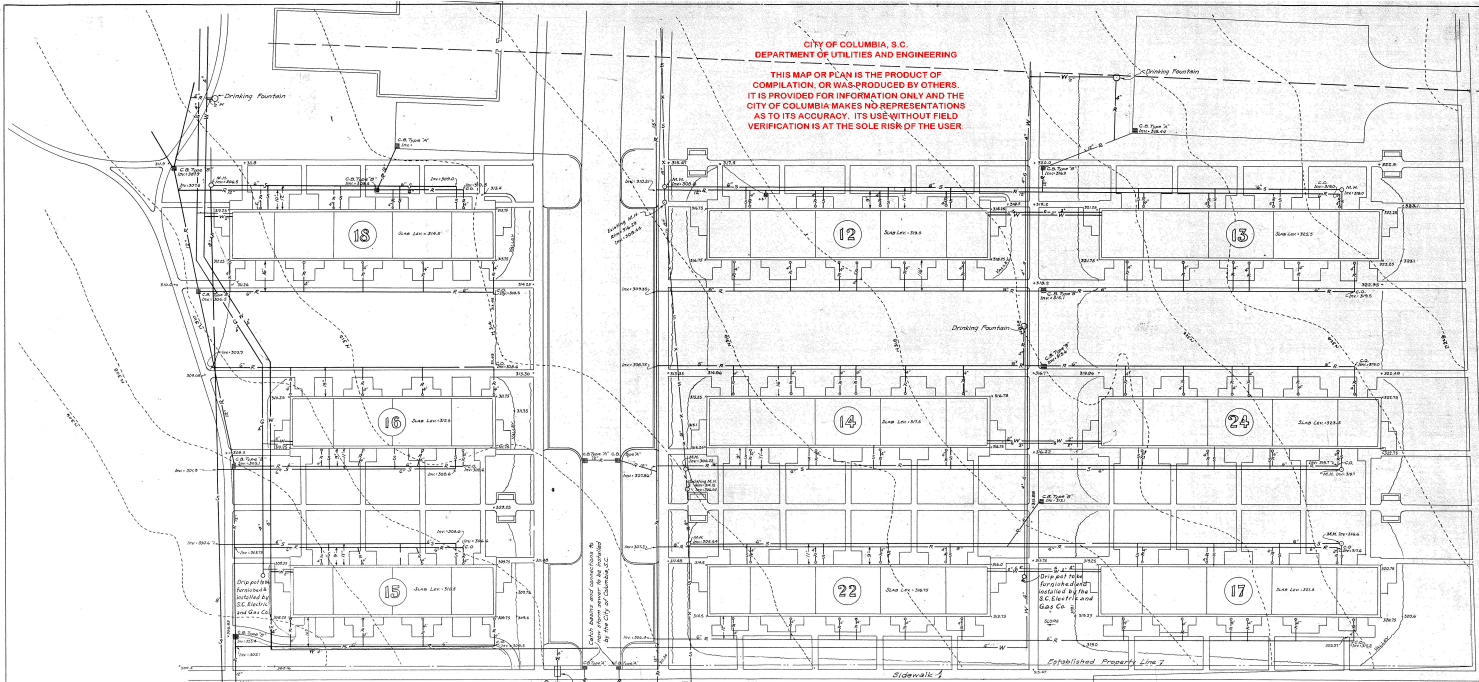
DESIGNED BY: [Signature]
 ENGINEER

WASHINGTON, D.C.

26

**CITY OF COLUMBIA, S.C.
DEPARTMENT OF UTILITIES AND ENGINEERING**

**THIS MAP OR PLAN IS THE PRODUCT OF
COMPILATION, OR WAS PRODUCED BY OTHERS.
IT IS PROVIDED FOR INFORMATION ONLY AND THE
CITY OF COLUMBIA MAKES NO REPRESENTATIONS
AS TO ITS ACCURACY. ITS USE WITHOUT FIELD
VERIFICATION IS AT THE SOLE RISK OF THE USER.**



McDuffie Avenue

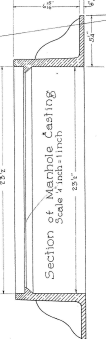
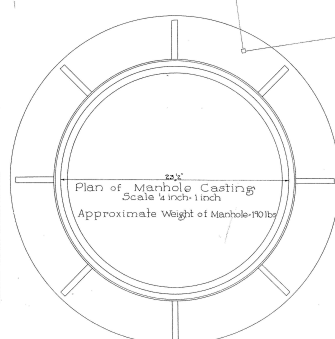
Washington Street
Contractor to connect storm sewer to manhole to be constructed by the City of Columbia, S.C. at this point.

Contractor to connect storm sewer to manhole to be constructed by the City of Columbia, S.C. at this point.

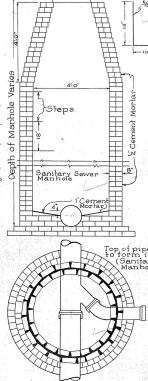
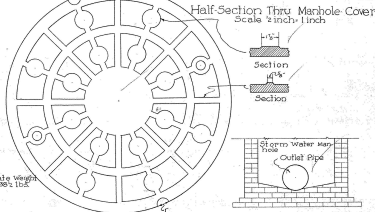
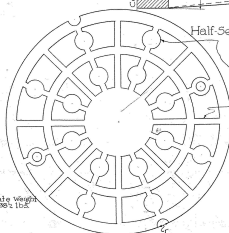
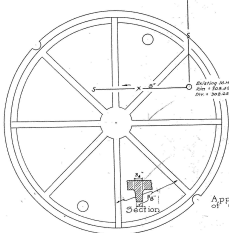
Contractor to connect storm sewer to manhole to be constructed by the City of Columbia, S.C. at this point.

Marshall Street
Contractor to connect storm sewer to manhole to be constructed by the City of Columbia, S.C. at this point.

Notes:
As building owners from buildings to make to the City.
For building utilities see Plans No. 2, 3, 4, 5, 6, 7, 8, 9, 10, 11, 12, 13, 14, 15, 16, 17, 18, 19, 20, 21, 22, 23, 24, 25, 26, 27, 28, 29, 30, 31, 32, 33, 34, 35, 36, 37, 38, 39, 40, 41, 42, 43, 44, 45, 46, 47, 48, 49, 50, 51, 52, 53, 54, 55, 56, 57, 58, 59, 60, 61, 62, 63, 64, 65, 66, 67, 68, 69, 70, 71, 72, 73, 74, 75, 76, 77, 78, 79, 80, 81, 82, 83, 84, 85, 86, 87, 88, 89, 90, 91, 92, 93, 94, 95, 96, 97, 98, 99, 100.
For other finished grade elevations see Block Plans.
Design of streets, driveways, parking, curbing and walks dedicated for public use and layout of all utilities in public rights of way are hereby approved by the City of Columbia, S.C.
M.S. Tolson, City Engineer



Note: Details of Manhole Castings and Construction as shown on this sheet are standard for the City of Columbia.



KEY PLAN

PLAN OF BLOCK C
LOW RENT HOUSING PROJECT, COLUMBIA, S.C. 01

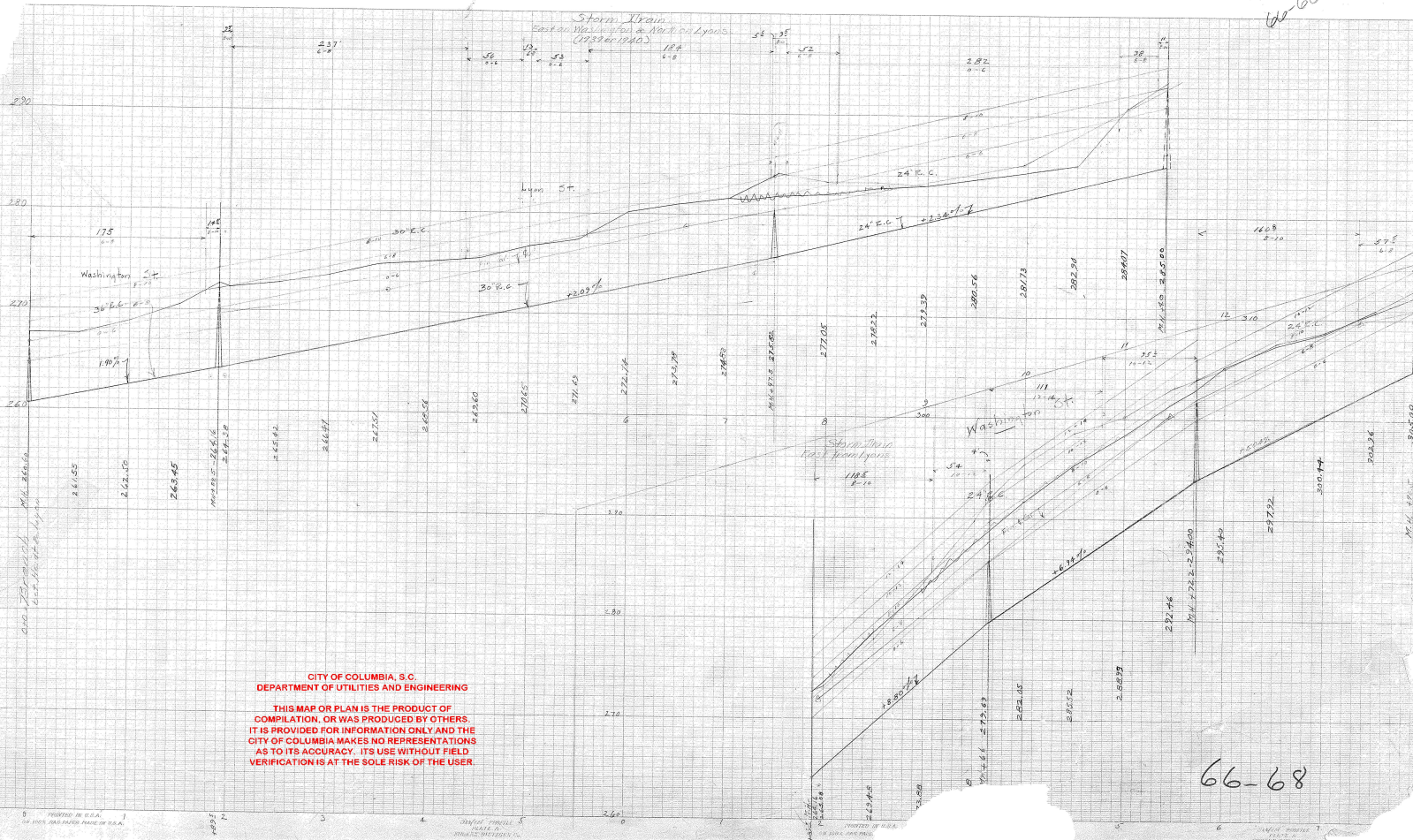
THE ENGINEER HAS EXAMINED THE PLAN AND SPECIFICATIONS AND FINDS THEM TO BE IN ACCORDANCE WITH THE CITY OF COLUMBIA, S.C. ENGINEERING DEPARTMENT REGULATIONS.

DATE: 10/15/54

ENGINEER: M.S. Tolson

26-2A

66-68



CITY OF COLUMBIA, S. C.
 DEPARTMENT OF UTILITIES AND ENGINEERING

THIS MAP OR PLAN IS THE PRODUCT OF
 COMPILATION, OR WAS PRODUCED BY OTHERS.
 IT IS PROVIDED FOR INFORMATION ONLY AND THE
 CITY OF COLUMBIA MAKES NO REPRESENTATIONS
 AS TO ITS ACCURACY. ITS USE WITHOUT FIELD
 VERIFICATION IS AT THE SOLE RISK OF THE USER.

66-68

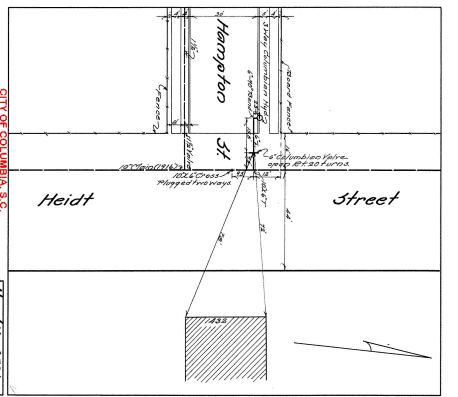
CITY OF COLUMBIA, S.C.
DEPARTMENT OF UTILITIES AND ENGINEERING

THIS MAP OR PLAN IS THE PRODUCT OF
COMPILATION, OR WAS PRODUCED BY OTHERS.
IT IS PROVIDED FOR INFORMATION ONLY AND THE
CITY OF COLUMBIA MAKES NO REPRESENTATIONS
AS TO ITS ACCURACY. ITS USE WITHOUT FIELD
VERIFICATION IS AT THE SOLE RISK OF THE USER.



NOTE-SEE SHEET 3 FOR DETAIL OF TRENHOLM ROAD

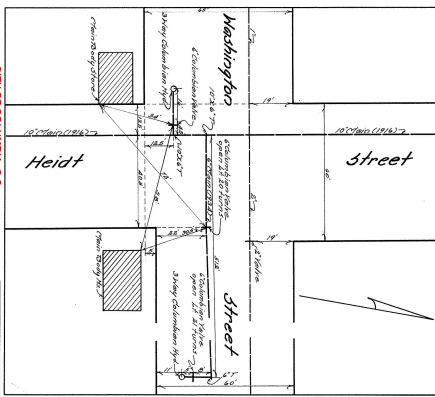
SCANNED
SHEET 2 OF 17



CITY OF COLUMBIA, S.C.
DEPARTMENT OF UTILITIES AND ENGINEERING

Sheet No. 2587

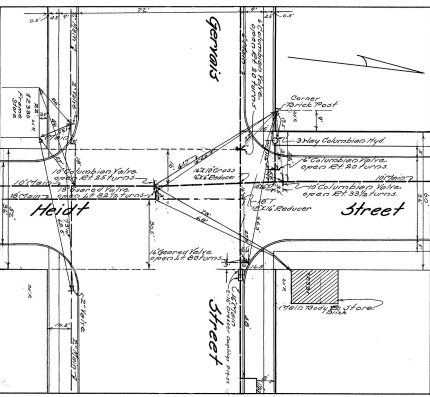
THIS MAP OR PLAN IS THE PRODUCT OF
COMPILATION, OR WAS PRODUCED BY OTHERS.
IT IS PROVIDED FOR INFORMATION ONLY, AND THE
CITY OF COLUMBIA MAKES NO REPRESENTATIONS
AS TO ITS ACCURACY. ITS USE WITHOUT FIELD
VERIFICATION IS AT THE SOLE RISK OF THE USER.



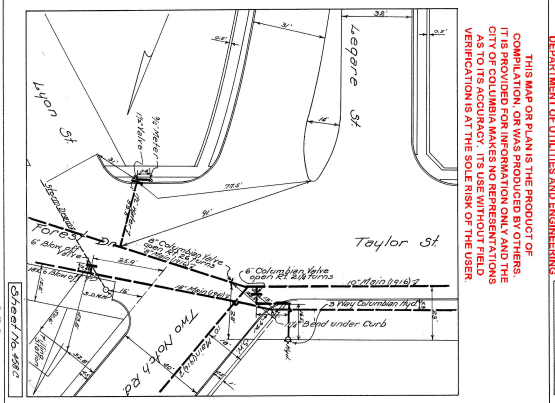
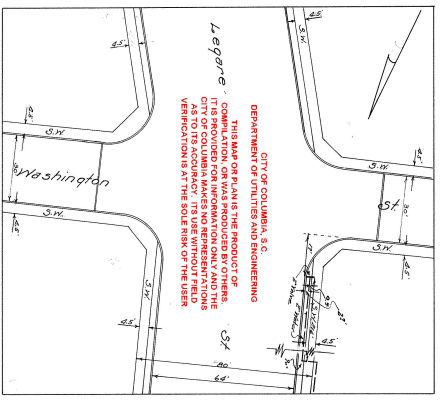
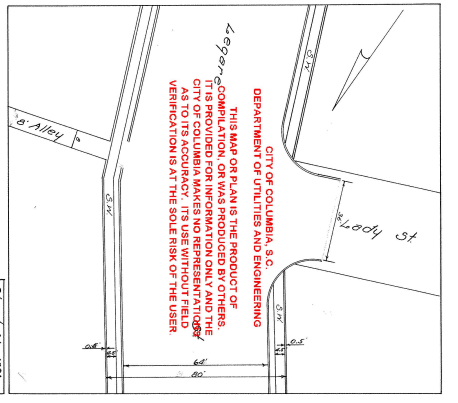
CITY OF COLUMBIA, S.C.
DEPARTMENT OF UTILITIES AND ENGINEERING

Sheet No. 2588

THIS MAP OR PLAN IS THE PRODUCT OF
COMPILATION, OR WAS PRODUCED BY OTHERS.
IT IS PROVIDED FOR INFORMATION ONLY, AND THE
CITY OF COLUMBIA MAKES NO REPRESENTATIONS
AS TO ITS ACCURACY. ITS USE WITHOUT FIELD
VERIFICATION IS AT THE SOLE RISK OF THE USER.

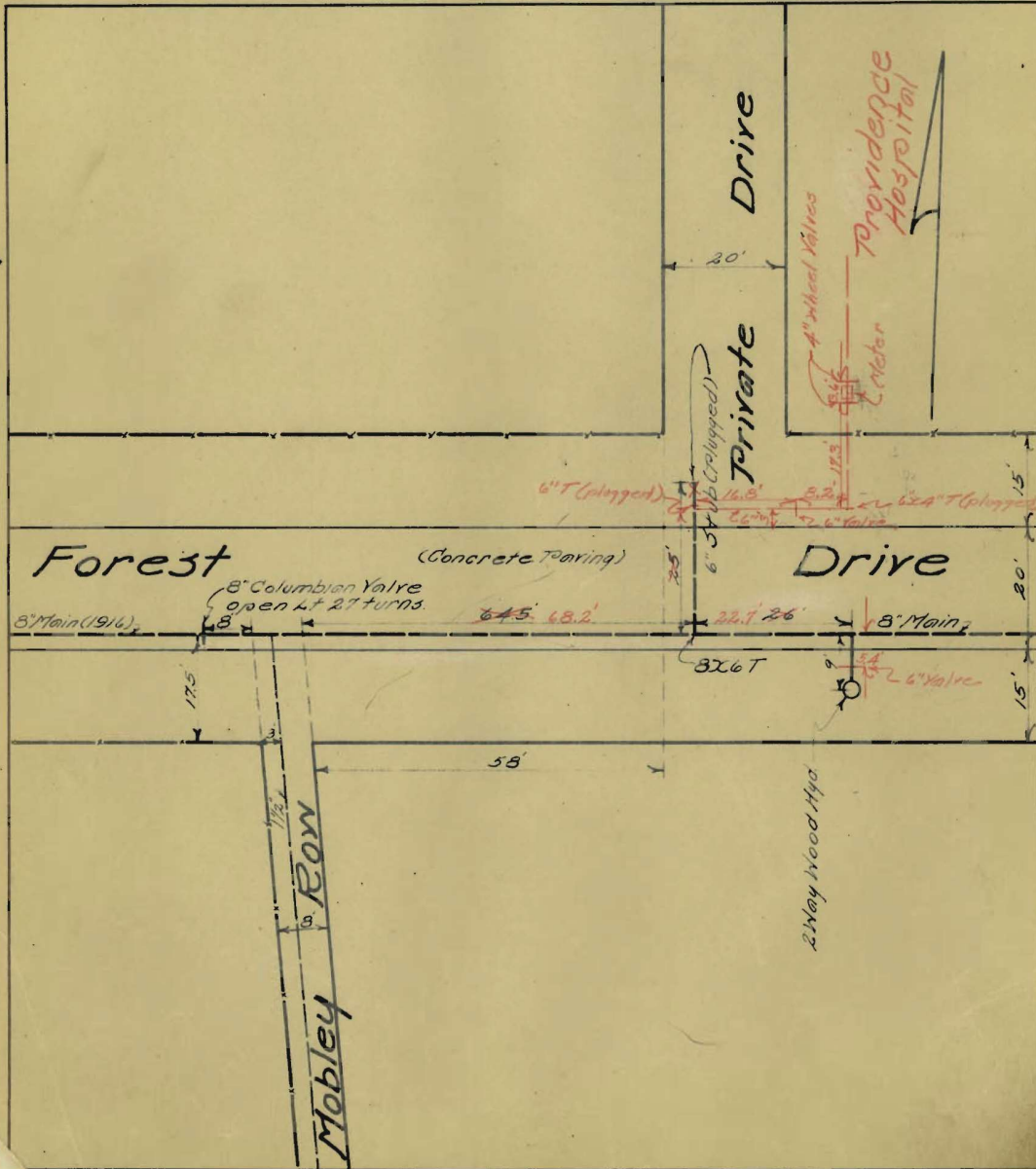


Sheet No. 2589



CITY OF COLUMBIA, S.C.
DEPARTMENT OF UTILITIES AND ENGINEERING

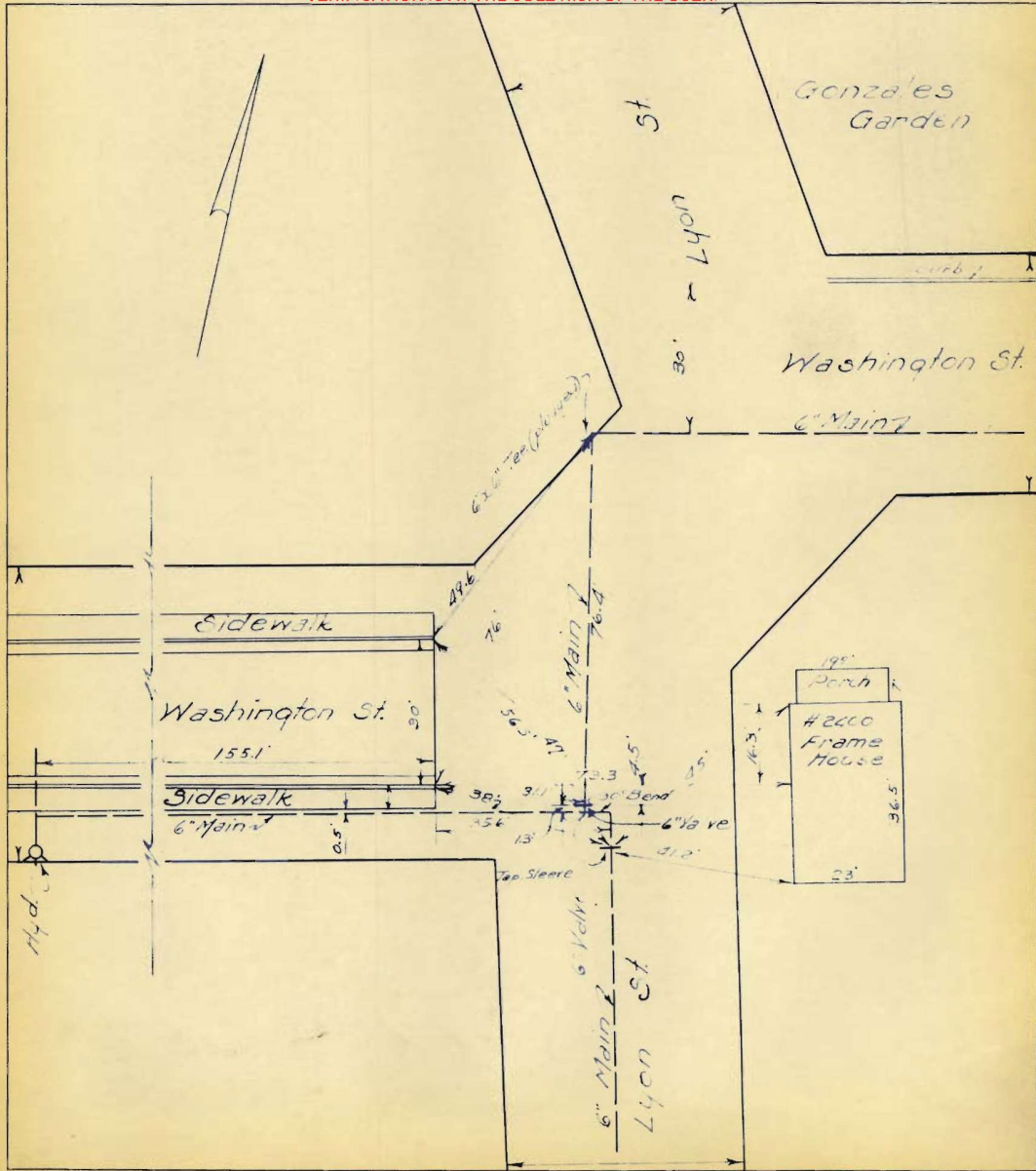
THIS MAP OR PLAN IS THE PRODUCT OF
COMPILATION, OR WAS PRODUCED BY OTHERS.
IT IS PROVIDED FOR INFORMATION ONLY AND THE
CITY OF COLUMBIA MAKES NO REPRESENTATIONS
AS TO ITS ACCURACY. ITS USE WITHOUT FIELD
VERIFICATION IS AT THE SOLE RISK OF THE USER.



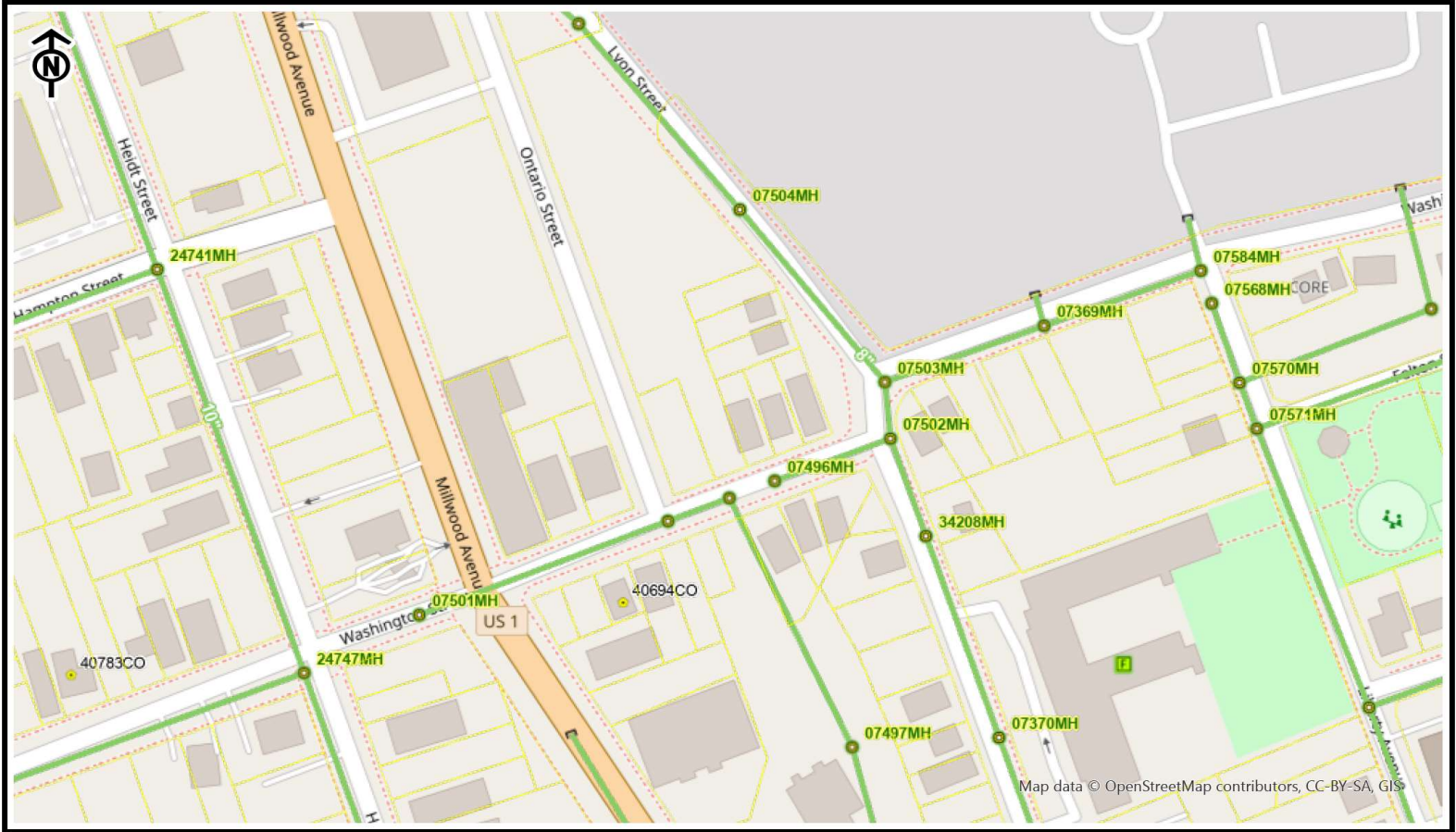
Sheet No. 71

CITY OF COLUMBIA, S.C.
DEPARTMENT OF UTILITIES AND ENGINEERING

THIS MAP OR PLAN IS THE PRODUCT OF
COMPILATION, OR WAS PRODUCED BY OTHERS.
IT IS PROVIDED FOR INFORMATION ONLY AND THE
CITY OF COLUMBIA MAKES NO REPRESENTATIONS
AS TO ITS ACCURACY. ITS USE WITHOUT FIELD
VERIFICATION IS AT THE SOLE RISK OF THE USER.



Sheet No. 97



Map data © OpenStreetMap contributors, CC-BY-SA, GIS

City of Columbia

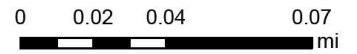
This map was prepared using the City GIS Viewer

City of Columbia - GIS Division

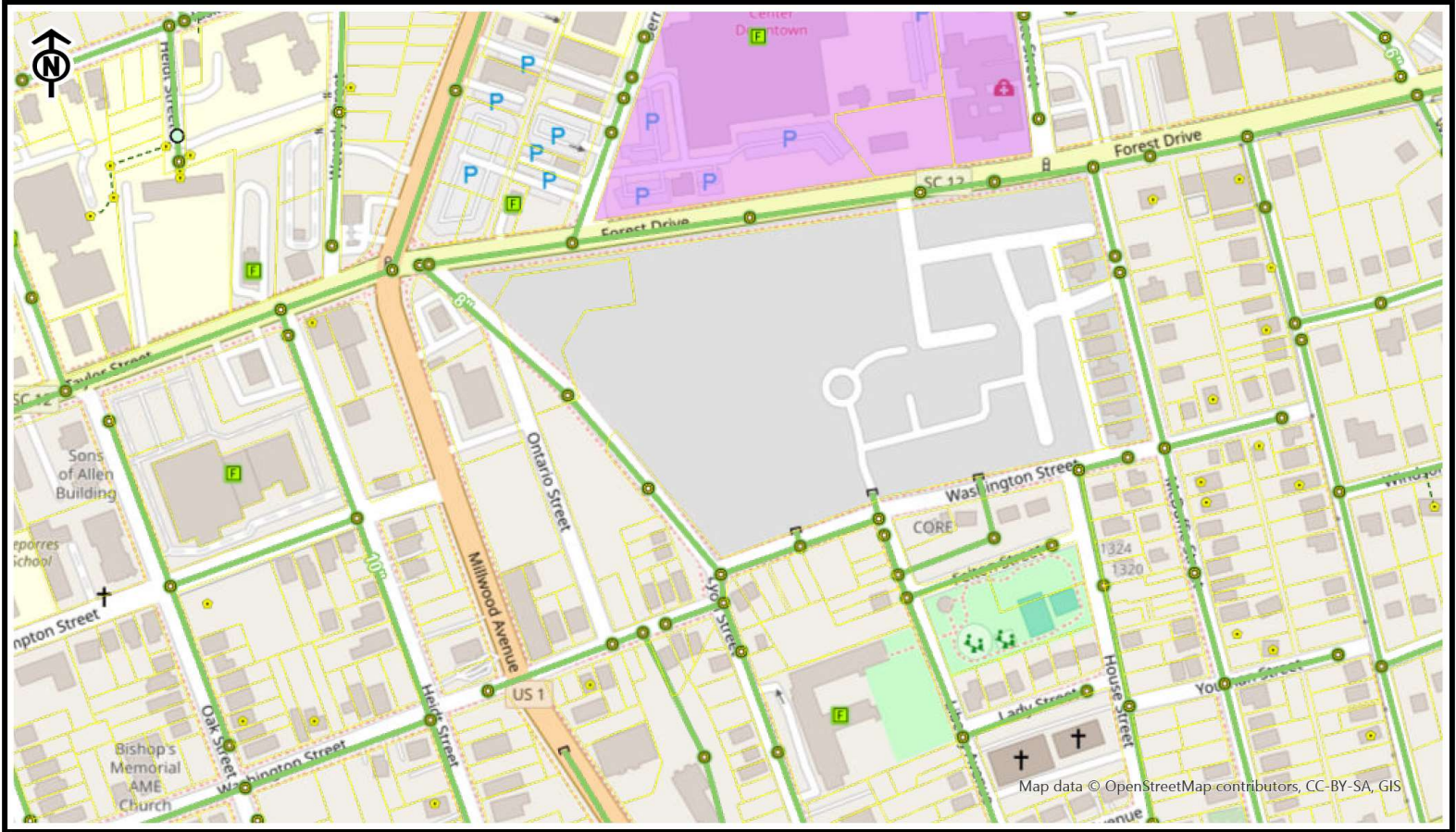
6/6/2024 6:37 AM



Tax Parcel	Minor	Major	Major
Sewer Gravity Mains (Not Active)	Minor	Major	Major
Sewer Vault	Minor	Major	Major
Sewer Monitoring Well	Minor	Major	Major
Flow Meter	Minor	Major	Major
Permanent	Minor	Major	Major
Temporary	Minor	Major	Major
Temporary	Minor	Major	Major
Sewer Rain Gauge	Minor	Major	Major
SS FOG Trap	Minor	Major	Major
Satellite Sewer Location	Minor	Major	Major
Sewer Pressurized Mains (Active, Private/Other)	Minor	Major	Major
Sewer Gravity Mains (Active, City)	Minor	Major	Major
Sewer Pressurized Mains (Active, City)	Minor	Major	Major
Sewer Lateral Lines	Minor	Major	Major
Sewer Casing	Minor	Major	Major
Manhole (Active, Private/Other)	Minor	Major	Major
Sewer Fitting	Minor	Major	Major



**CITY OF COLUMBIA
GIS DATA DISCLAIMER:**
The City of Columbia GIS data represented on this map or plan is the product of the compilation of data produced by others. It is provided for informational purposes only and the City of Columbia makes no representation as to its accuracy. Its use without field verification is at the sole risk of the user.

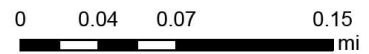


City of Columbia

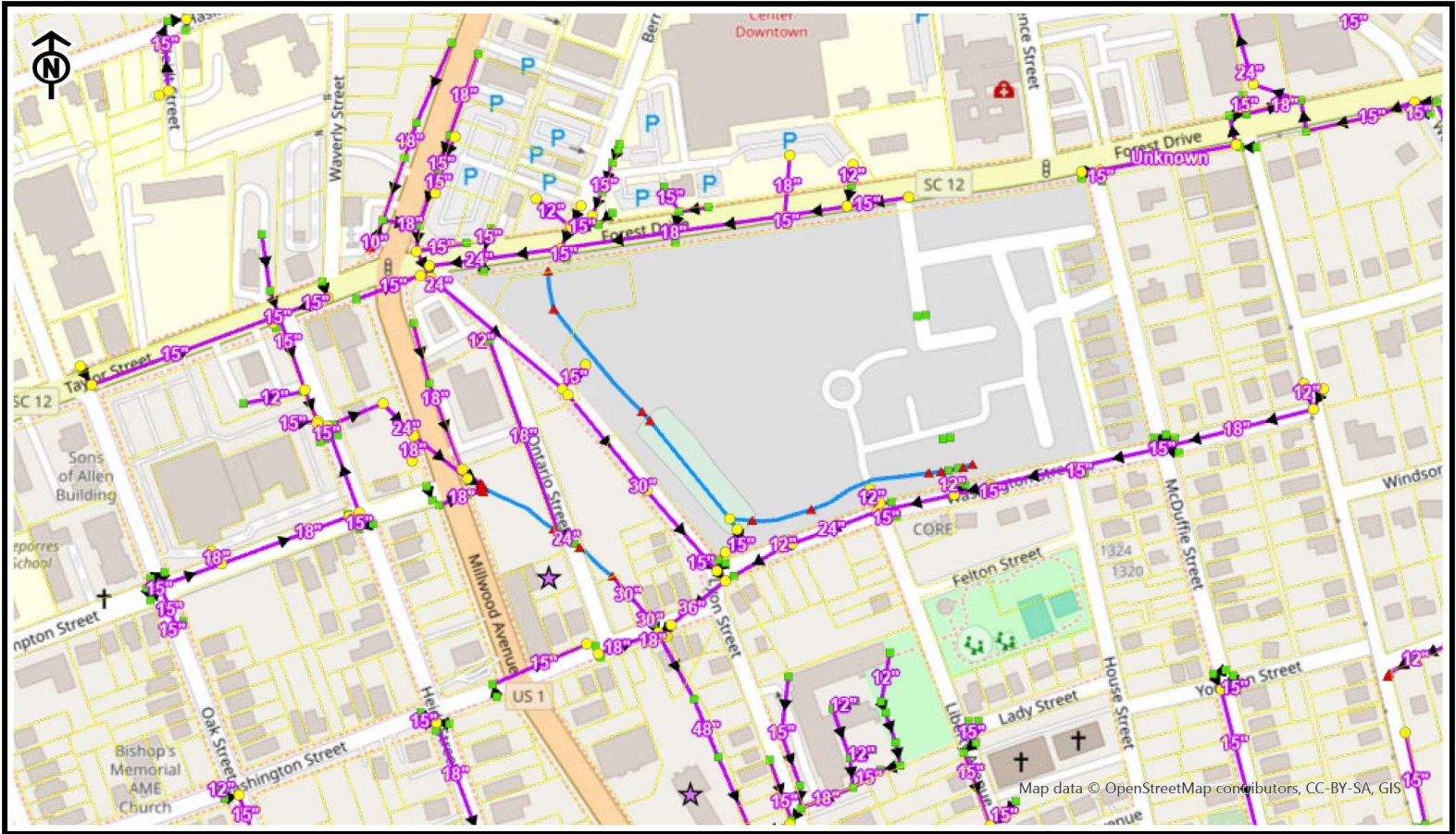
This map was prepared using the City GIS Viewer

City of Columbia - GIS Division

6/6/2024 6:38 AM



**CITY OF COLUMBIA
GIS DATA DISCLAIMER:**
The City of Columbia GIS data represented on this map or plan is the product of the compilation of data produced by others. It is provided for informational purposes only and the City of Columbia makes no representation as to its accuracy. Its use without field verification is at the sole risk of the user.



City of Columbia

This map was prepared using the City GIS Viewer

City of Columbia - GIS Division

6/6/2024 6:40 AM



- Tax Parcel
- Natural Waterbody
- Perm BMP
- Open Drain

Abandoned or Proposed Drainpipe

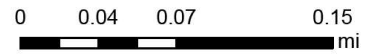
Life Cycle Status

- Abandoned
- Proposed

Drainpipe

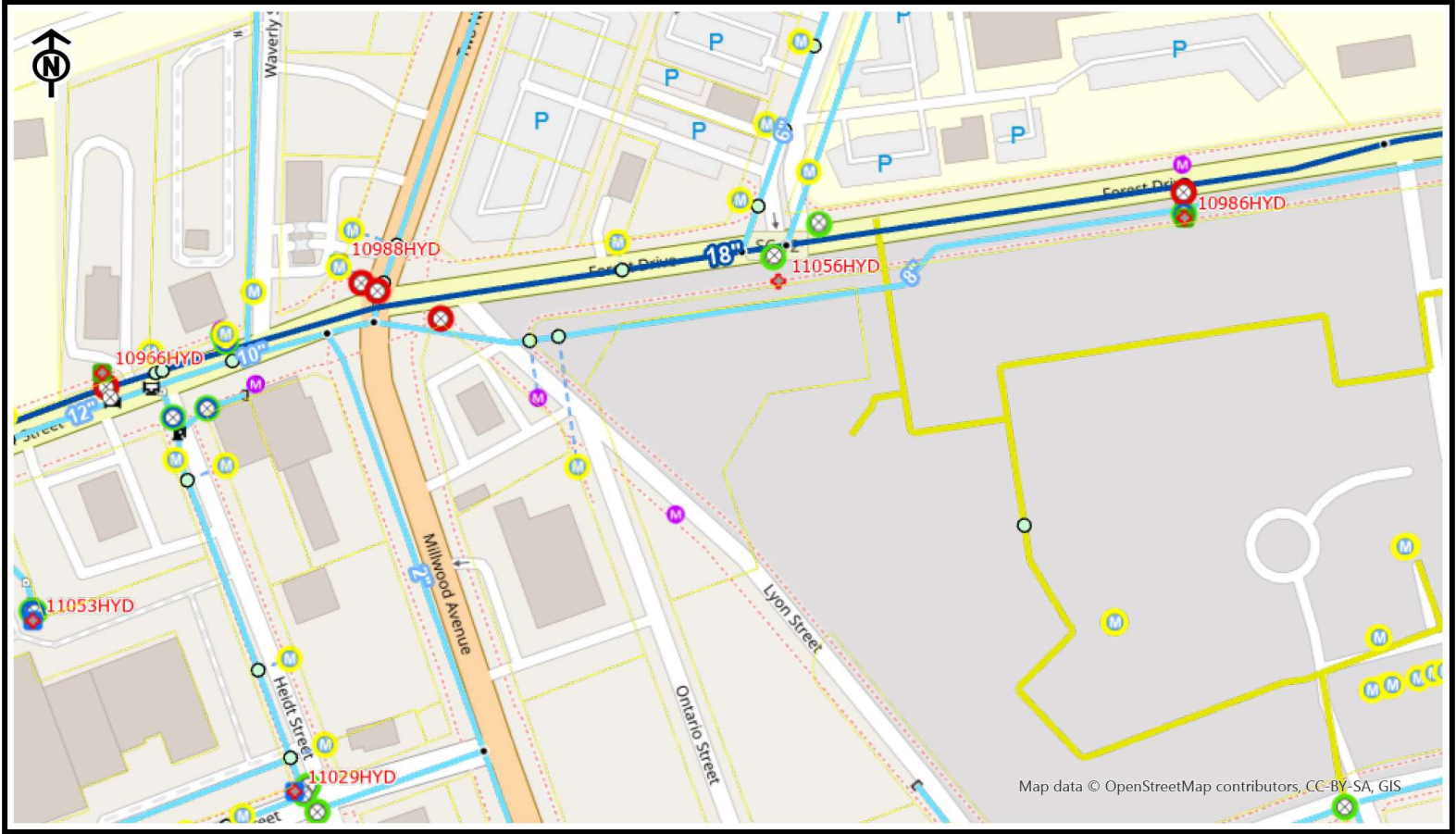
Integration Status

- Integrated
- Not Integrated
- Inlet
- Network Structure
- Discharge Point
- Industrial Sites MS4



CITY OF COLUMBIA GIS DATA DISCLAIMER:

The City of Columbia GIS data represented on this map or plan is the product of the compilation of data produced by others. It is provided for informational purposes only and the City of Columbia makes no representation as to its accuracy. Its use without field verification is at the sole risk of the user.



City of Columbia

This map was prepared using the City GIS Viewer

City of Columbia - GIS Division

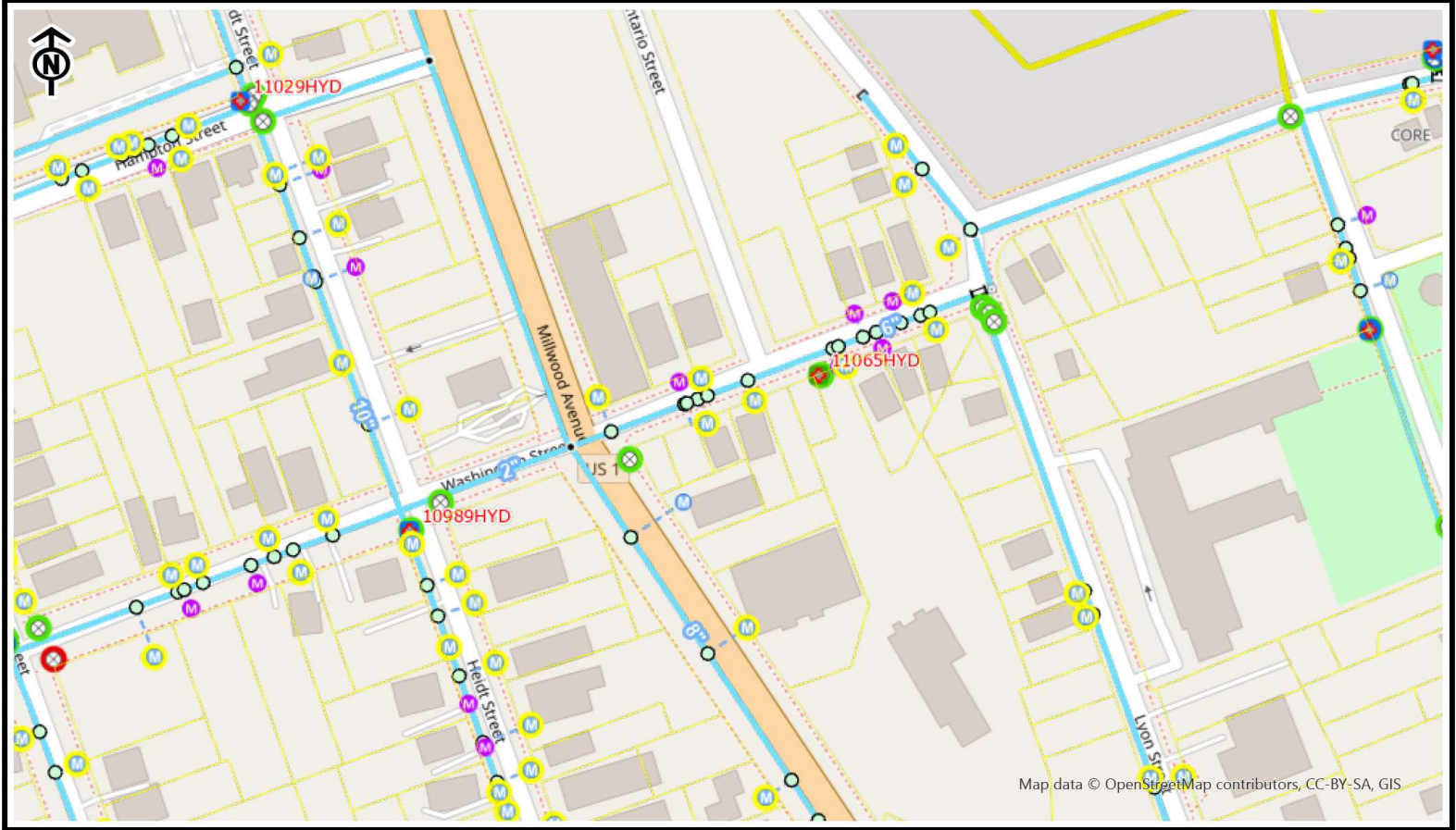
6/6/2024 6:33 AM



- | | | | |
|--|---|--|---|
| <ul style="list-style-type: none"> Tax Parcel WM4484 VALVES ● Located ○ Not Located ○ Not Located ○ Not Located ○ Not Located Water Meter (Inactive/Outlook) ○ InActive ○ Outlook --- Water Service Line (Active) Water Main (Abandoned or Proposed) --- Abandoned --- Proposed | <ul style="list-style-type: none"> Water Fitting (Active) ● Tapping Sleeve & Valve ○ Tap ○ Bend ○ Cap ○ Cross ○ Reducer + Reducing Cross + Reducing Tee Sleeve + Tee + Wye • Unknown Water System Valve (Active) ○ Survey Grade GPS | <ul style="list-style-type: none"> ○ Other Datasource Water Main (Active) --- Distribution --- Transmission + Water Control Valve (Active) Hydrant (Active) + CDC (Active, No Flow Band) + CDC (Active, Blue Flow Band) + CDC (Active, Green Flow Band) + CDC (Active, Yellow Flow Band) ○ Inactive (All) ○ Inactive (All) ○ Inactive (All) ○ Inactive (All) ○ Inactive (All) ○ Inactive (All) | <ul style="list-style-type: none"> + Private (Active) + Private (Active) + Private (Active) + Private (Active) Water Meter (Active) ○ Analog ○ City - Digital ○ LIMS - Digital ○ PRV (Active) + Pump Station (Active) Tank (Active) + Tank - Elevated |
|--|---|--|---|



**CITY OF COLUMBIA
GIS DATA DISCLAIMER:**
The City of Columbia GIS data represented on this map or plan is the product of the compilation of data produced by others. It is provided for informational purposes only and the City of Columbia makes no representation as to its accuracy. Its use without field verification is at the sole risk of the user.



City of Columbia

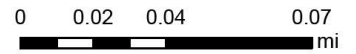
This map was prepared using the City GIS Viewer

City of Columbia - GIS Division

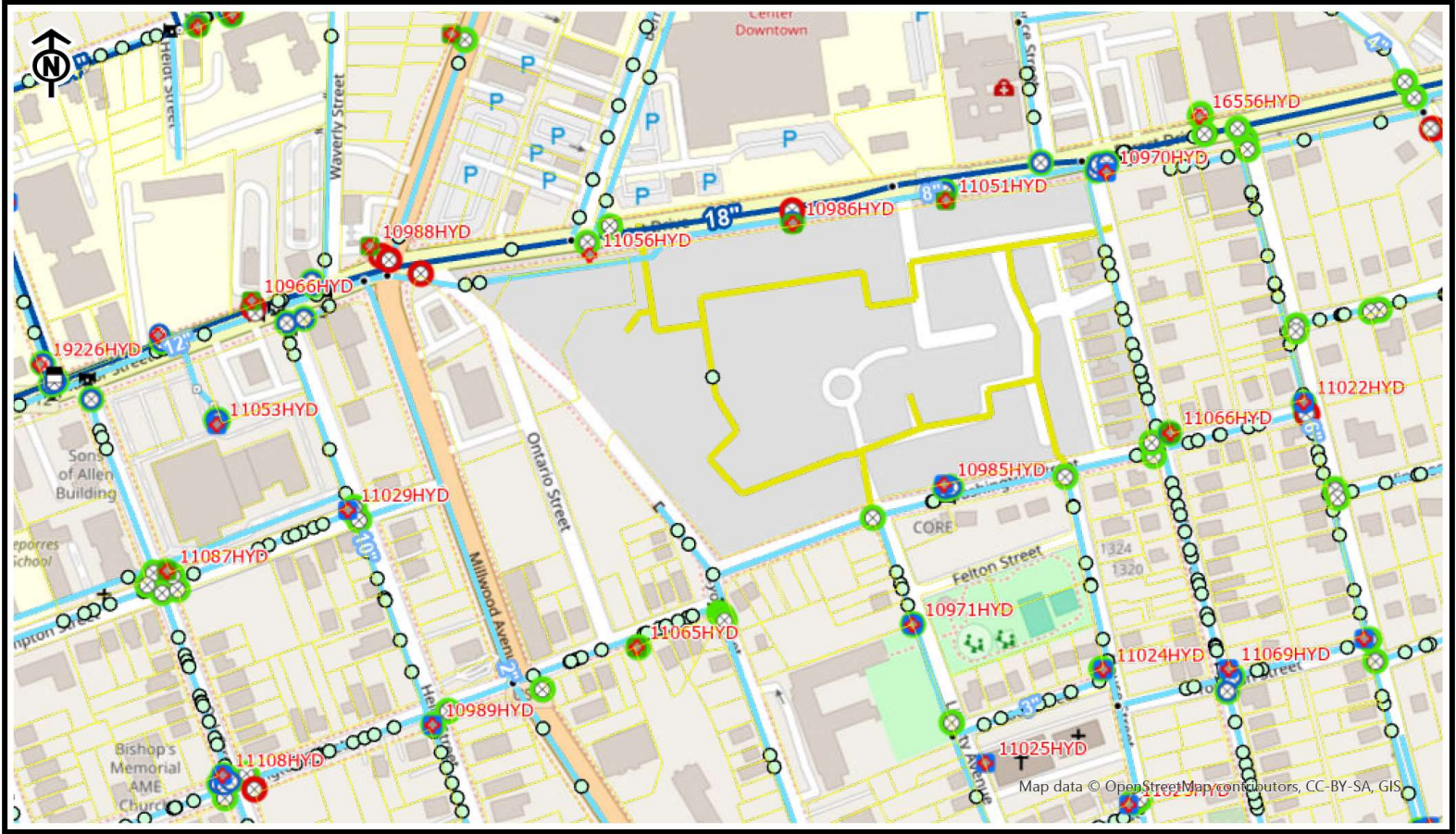
6/6/2024 6:34 AM



- | | | | |
|---|--|--|---|
| <ul style="list-style-type: none"> □ Tax Parcel WM4484 VALVES ● Located ○ Not Located ○ Not Located ○ Not Located ○ Not Located ○ Inactive ○ Outbook --- Water Service Line (Active) Water Main (Abandoned or Proposed) --- Abandoned --- Proposed | <ul style="list-style-type: none"> Water Fitting (Active) ● Tapping Sleeve & Valve ○ Tap ○ Bend ○ Sleeve ○ Cap ○ Cross ○ Reducer ● Reducing Cross ● Reducing Tee ○ Sleeve ○ Tee ○ Wye ● Unknown Water System Valve (Active) ○ Survey Grade GPS | <ul style="list-style-type: none"> ○ Other Datasource Water Main (Active) --- Distribution --- Transmission --- Water Control Valve (Active) Hydrant (Active) ● CDC (Active, No Flow Band) ● CDC (Active, Blue Flow Band) ● CDC (Active, Green Flow Band) ● CDC (Active, Yellow Flow Band) ○ Inactive (All) ○ Inactive (All) ○ Inactive (All) ○ Inactive (All) ○ Inactive (All) ○ Inactive (All) | <ul style="list-style-type: none"> ● Private (Active) ● Private (Active) ● Private (Active) ● Private (Active) Water Meter (Active) ○ Analog ○ City - Digital ○ LIMS - Digital ○ PRV (Active) ○ Pump Station (Active) Tank (Active) ● Tank - Elevated |
|---|--|--|---|



**CITY OF COLUMBIA
GIS DATA DISCLAIMER:**
The City of Columbia GIS data represented on this map or plan is the product of the compilation of data produced by others. It is provided for informational purposes only and the City of Columbia makes no representation as to its accuracy. Its use without field verification is at the sole risk of the user.



City of Columbia

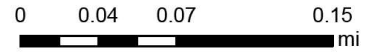
This map was prepared using the City GIS Viewer

City of Columbia - GIS Division

6/6/2024 6:39 AM



- | | | | |
|--|--|--|---|
| <ul style="list-style-type: none"> Tax Parcel WM4484 VALVES Located Not Located Not Located Not Located Water Main (Abandoned or Proposed) Abandoned Proposed Water Fitting (Active) Tapping Sleeve & Valve Tap Bend | <ul style="list-style-type: none"> Cap Cross Reducer Reducing Cross Reducing Tee Sleeve Tee Wye Unknown Water System Valve (Active) Survey Grade GPS Other Datasource Water Main (Active) Distribution | <ul style="list-style-type: none"> Transmission Water Control Valve (Active) Hydrant (Active) COC (Active, No Flow Band) COC (Active, Blue Flow Band) COC (Active, Green Flow Band) COC (Active, Yellow Flow Band) Inactive (All) Inactive (All) Inactive (All) Inactive (All) Private (Active) Private (Active) | <ul style="list-style-type: none"> Private (Active) Private (Active) PRV (Active) Pump Station (Active) Tank (Active) Tank - Elevated Tank - Standpipe Water Treatment Plant Water District Offices |
|--|--|--|---|



**CITY OF COLUMBIA
GIS DATA DISCLAIMER:**
The City of Columbia GIS data represented on this map or plan is the product of the compilation of data produced by others. It is provided for informational purposes only and the City of Columbia makes no representation as to its accuracy. Its use without field verification is at the sole risk of the user.