

Spartanburg Sump Release
Spartanburg, SC
Operations and Maintenance Plan
Version 1.3
02/08/2026

Position	Name	Signature	Date
FOSC	Matthew Huyser, EPA		2/8/2026
SOSC	Benjamin Whitmire, SCDES		2/8/26
RPIC	Bradley Chamberlain		2/8/26

1.0 INTRODUCTION AND PURPOSE

This Operations and Maintenance Plan was prepared on behalf of Products (SE) Pipe Line Corporation (PPL), supporting Incident Command to provide a plan for maintenance of boom and/or filtration media and water sampling endpoints during the Emergency Response O&M phase of the Spartanburg Sump Release incident.

2.0 HEALTH AND SAFETY

Boom maintenance personnel and support personnel will review and adhere to the Site-Specific Health and Safety Plan. Boom maintenance activities will only be completed in a safe manner and under safe conditions as governed by the Site-Specific Health and Safety Plan.

3.0 TRANSITION

Emergency Response operation will transition from active to O&M phase once the following conditions are met:

- Response clean-up from valve to Location 0 is complete, including excavation around sump following the UC approved Excavation Plan.
- Oiled vegetation removal around Location 0 is complete.
- Recoverable product is absent on Fourmile Branch.

4.0 BOOM/FILTRATION MATERIALS

Materials selected will be appropriate for sheen capture and filtration and will be durable and self-contained. No loose sorbents will be applied. Every reasonable effort will be made to secure and anchor materials against damage from flooding and increased water velocity or changing water levels. Any materials used that are damaged in a storm or high-water event will be repaired, replaced and/or redesigned as needed. Any equipment or material washed downstream will be recovered, if possible.

5.0 BOOM/FILTRATION MAINTENANCE

Deployment locations are identified in the attached map. During the O&M Phase, maintenance crews of up to four technicians will be deployed according to work directives to check the boom/filter media, collect any accumulated product sheen or debris using sorbent materials, replace soiled, saturated or damaged boom/filter media, and readjust/tighten boom/filter as needed. Observations and actions shall be recorded on the Boom Maintenance Log and submitted the same day prior to leaving site. Boom Maintenance Logs will be emailed to SCDES and EPA weekly. Additional inspection and maintenance will be conducted following significant (>0.1") rain events with personnel deployed within 24 hours to inspect containment.

The above maintenance schedule will continue daily for 5 days after this plan is implemented. The maintenance schedule will then decrease to a frequency of three times per week for two weeks and then decrease to once weekly until project completion. This schedule frequency will be reevaluated should conditions warrant more frequent inspections.

Deployed boom/filtration media will be assessed for:

- Accumulations that reduce the efficiency of collection
- Condition/positioning of the boom including checking for tension, adequate tie-in, and overtopping
- Soiled or damaged sorbent boom/filtration media
- Effectiveness of the boom including undercutting and excessive accumulation
- If deceased or impacted wildlife is found during inspection, a photograph with scale will be taken and SCDES and EPA will be notified via email.

If sheen escapes last location, a new downstream location will be installed, and SCDES and EPA will be notified and a revised deployment map will be distributed. If a complaint or notification is received from a citizen, public official, or other source indicating that the boom is damaged or displaced, the issue will be investigated and corrected within 24 hours and documented in the Boom Maintenance Logs.

6.0 WATER SAMPLING

Surface water sampling will continue at the frequency specified in the Surface Water Sampling Plan and will conclude once five consecutive days of sampling results demonstrate concentrations below the applicable screening levels outlined in the plan.

7.0 WASTE MANAGEMENT

Any waste (product, sorbents, debris, PPE) will be handled, stored, and disposed of in accordance with the incident-specific Waste Management Plan. The method for storage and disposal of investigative-derived waste materials will comply with applicable local, state, and federal regulations.

8.0 PROJECT CLOSURE

This Operations and Maintenance Plan will transition to project closure once following site conditions are met:

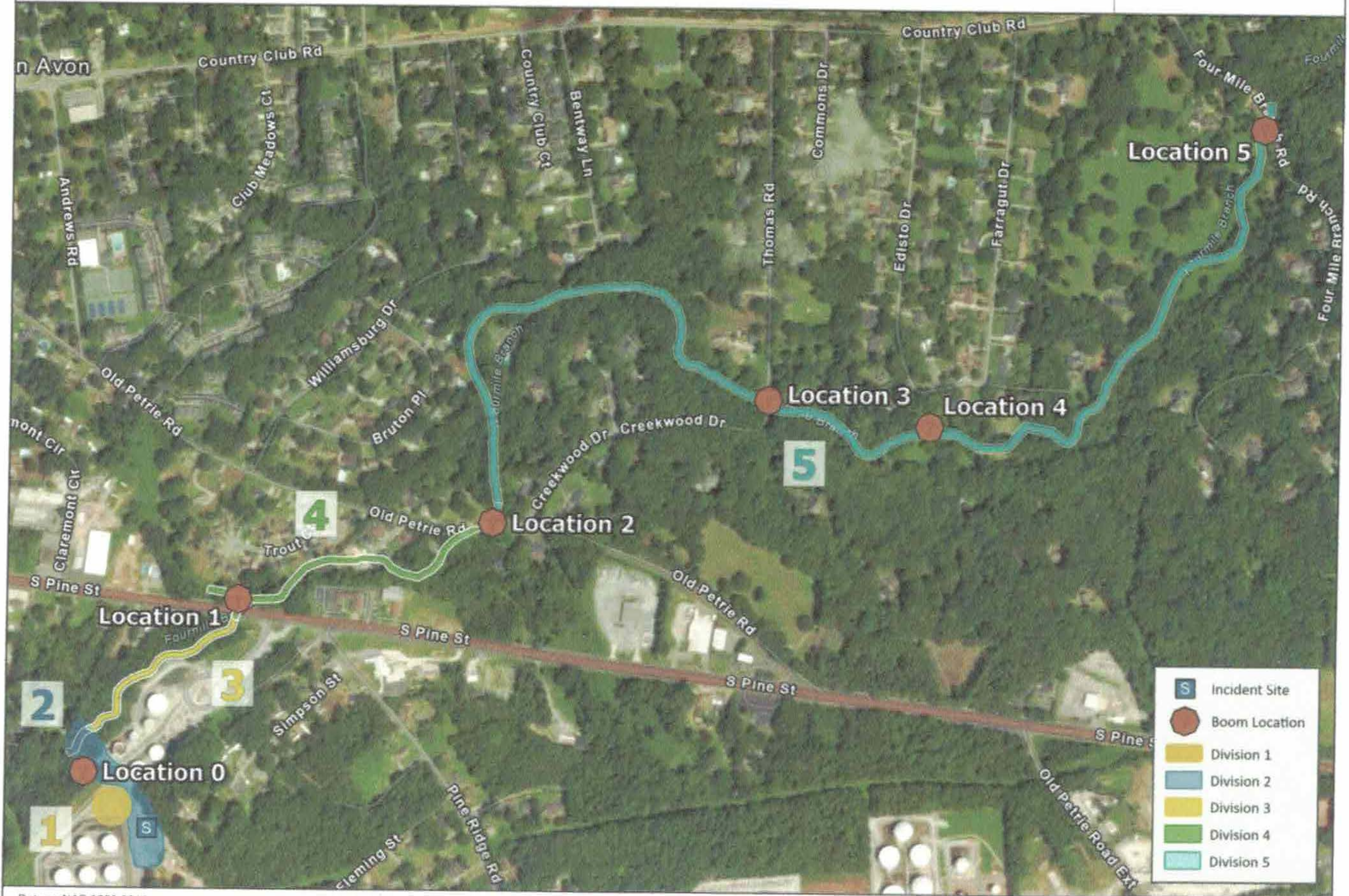
- No visible sheen on surface of Fourmile Branch for three consecutive weeks
- No oil or emulsified product visible after a 0.1" rainfall event
- A site walk will be conducted with SCDES and EPA prior to final boom removal. Site walk will be requested with a one-week notification.
- Emergency Response phase will be terminated upon SCDES and EPA concurrence.

CTEH Divisions 1-5

Spartanburg Sump Release | February 2, 2026



Project: PROJ-064257
City: Spartanburg, SC
County: Spartanburg



Datum: NAD 1983 2011

Projection: NAD 1983 2011 StatePlane South Carolina FIPS 3900 Ft Intl

0 500 1,000 2,000 Feet

Updated at 2026-02-03 08:30