



# January RBC Meeting Highlights

John Boyer, CDM Smith

*Agenda Item 3*

# What is the Santee RBC's Vision Statement?

- A. A resilient and sustainably managed Santee River Basin that balances human and ecological needs now and in the future.
- B. A resilient Santee River Basin that promotes the equitable use of water to support all current needs and allow for growth.
- C. A Santee River Basin that prioritizes human health, agriculture, energy, and industrial needs while maintaining sufficient surface water flows to support a healthy aquatic system.

# Which was not an adopted goal of the Santee RBC?

- 1. Understand and evaluate existing history, hydrology, policies, and management of the basin.*
- 2. Identify information and management gaps and develop new policy and water management strategy recommendations, as may be required, to ensure that water resources are maintained to support stakeholder's and ecological needs.*
- 3. Ensure that upstream basins consider the growing surface water needs of the Santee River basin and that neighboring basins do not impact the ability to withdraw groundwater.*
- 4. Evaluate current surface water and groundwater demands and project future water demands and needs.*
- 5. Coordinate efforts and collaborate with the upstream and other impacted basins.*
- 6. Enhance the stakeholders' understanding of regional water issues and the need for support of policies and behaviors to protect resources through public education and promotion.*

# What has been the average temperature change in SC over the past 120 years?

A. Decrease of 1 degree F

B. Decrease of 0.3 degrees F

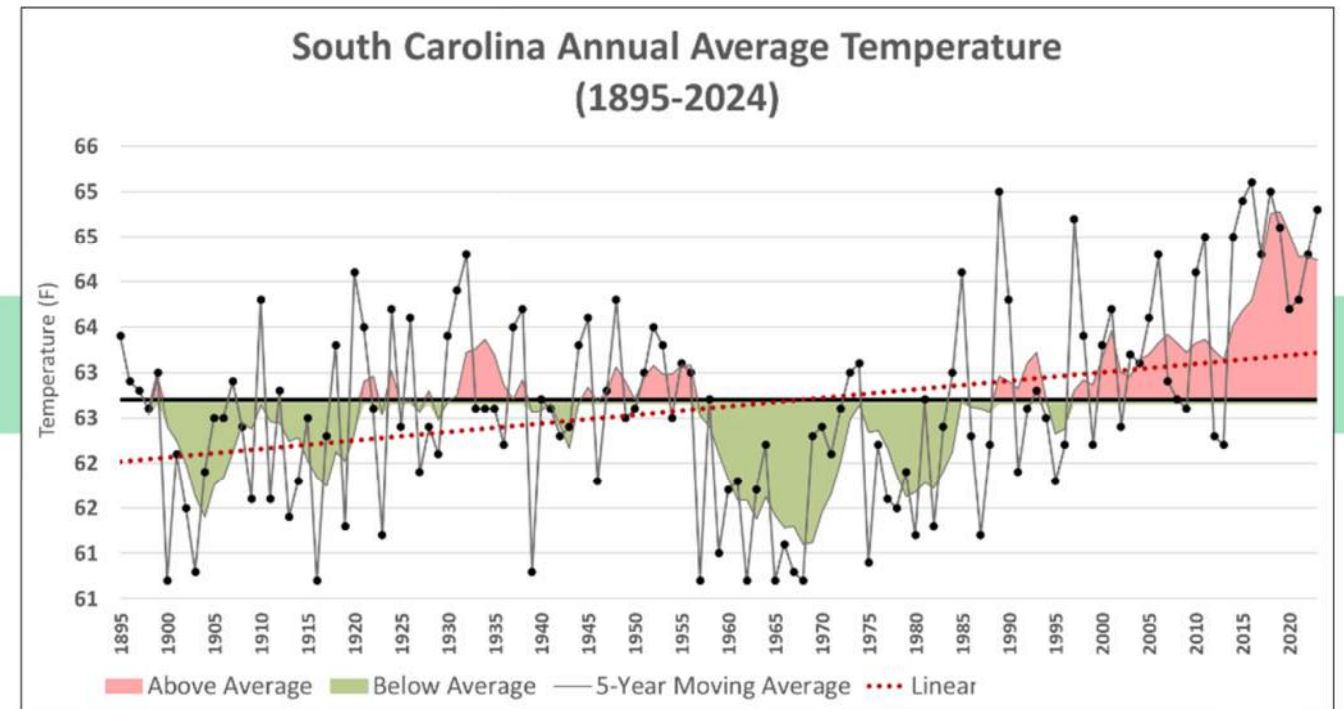
C. No long-term change in average temperature

D. Increase of 0.3 degrees F

E. Increase of 0.5 degrees F

F. Increase of 1 degree F

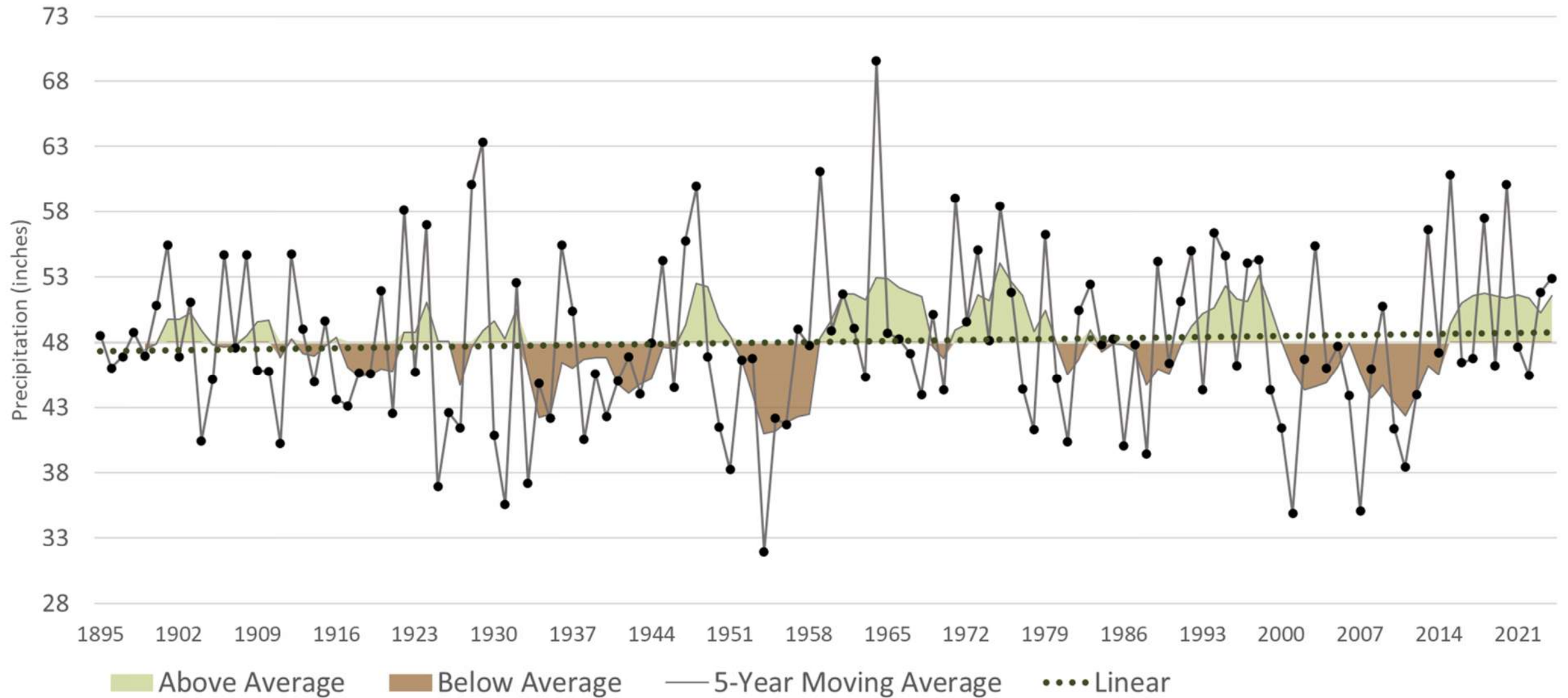
G. Increase of 2 degrees F



**Which of these statements about annual average precipitation and extreme rainfall events in SC over the past 120 years is true?**

- A. There has been an increasing trend primarily due to recent extreme rainfall events**
- B. There has been a decreasing trend, but extreme rainfall has recently increased in frequency**
- C. There has been no trend, but extreme rainfall has increased in frequency**
- D. There has been no trend in average annual precipitation or the frequency of extreme rainfall events**

# South Carolina Statewide Average Annual Precipitation (1895-2024)



# SC has how many Drought Monitoring Areas (DMAs)?

A. 4

B. 6

C. 8

D. 46

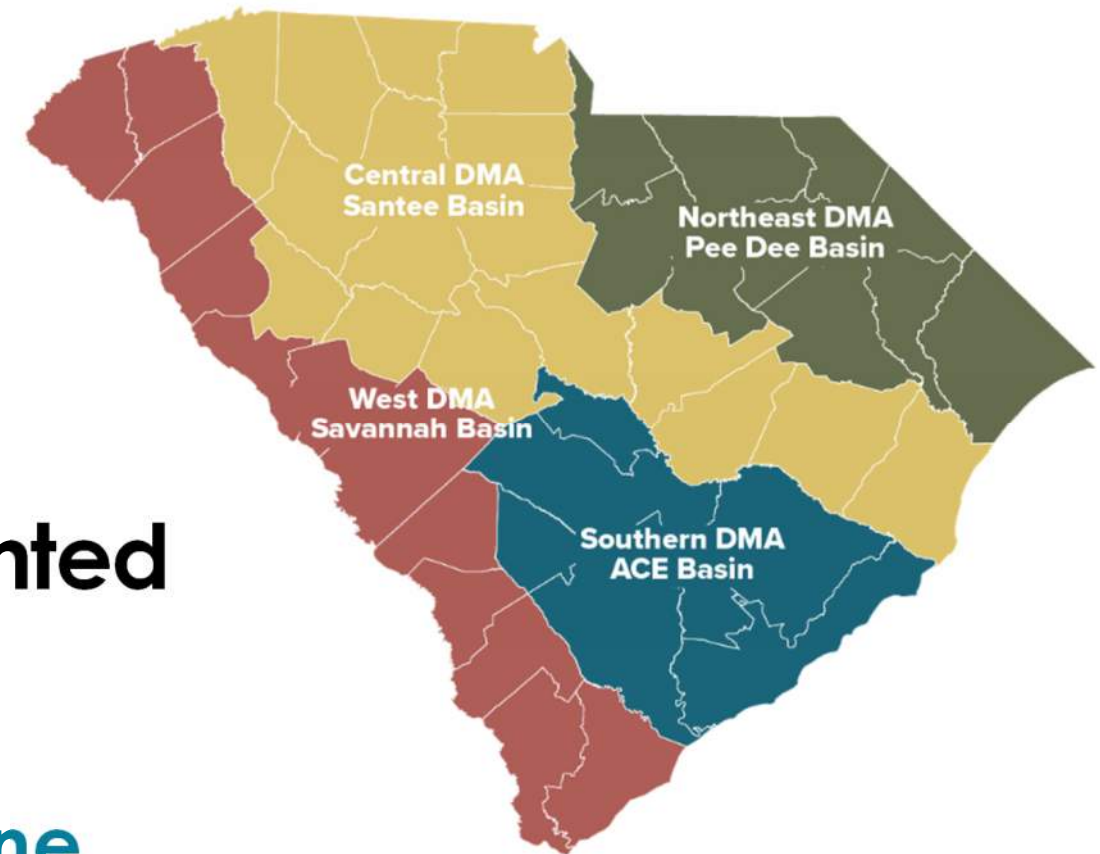
How many local, Governor-appointed members are there in each DMA?

A. 6

B. 10

C. 12

D. None



## Which of these statements is true?

- A. All public water systems are required to have and routinely update drought plans.
- B. Only public water systems serving 50,000 people or more are required to have a drought plan.
- C. All public water systems and large, industrial water users are required to have drought plans, but there is no requirement to update them.
- D. All permitted water users are required to have drought plans, but there is no requirement to update them.
- E. All permitted and registered water users are required to have drought plans.
- F. None of these statements are true.