



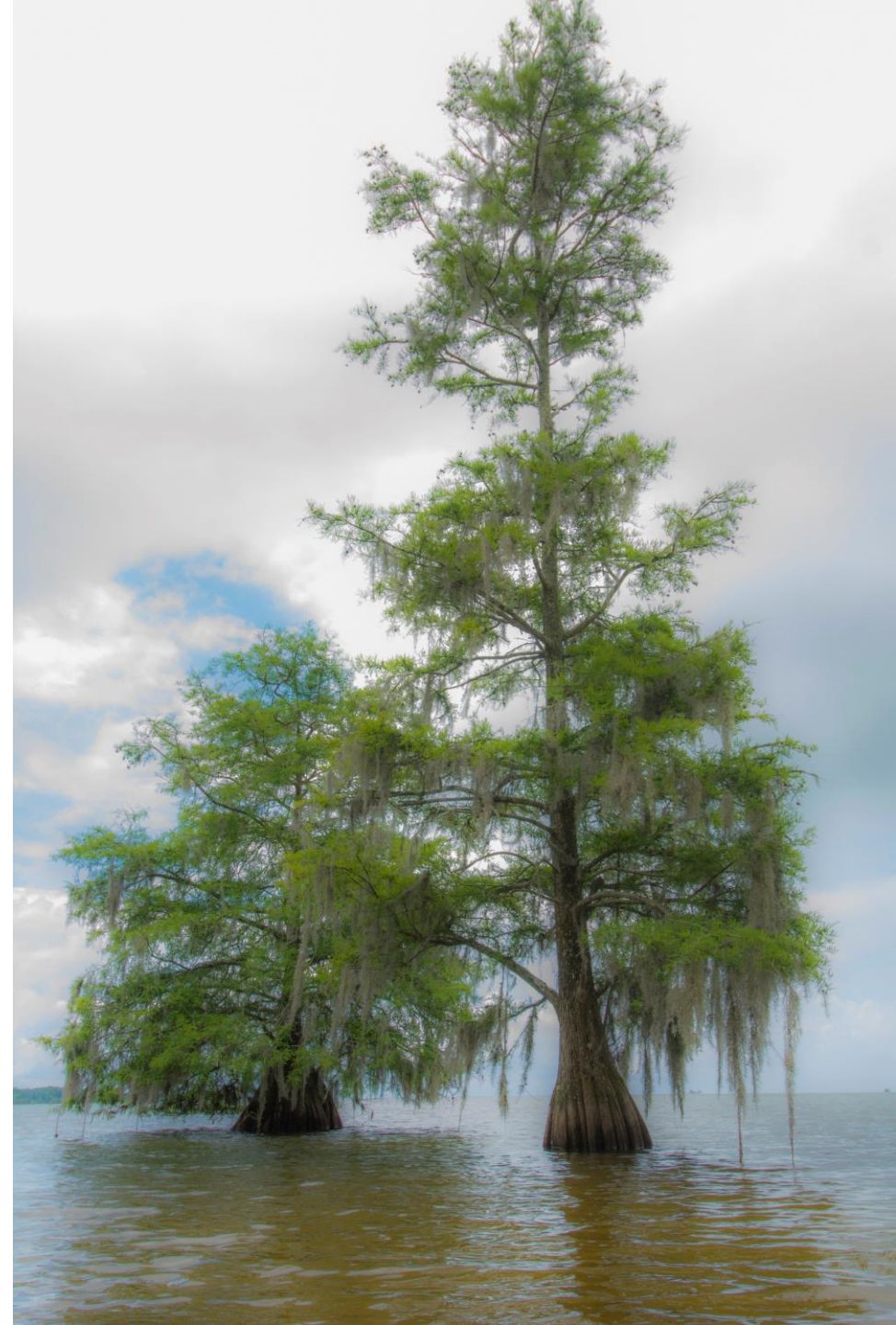
SC DEPARTMENT *of*
**ENVIRONMENTAL
SERVICES**

Santee River Basin Planning Public Meeting #2

October 10, 2024

Trident Technical College

North Charleston, SC



Santee River Basin Planning Public Meeting #2

1. Welcome and Opening Remarks – Dr. Jeff Allen, Clemson University and Joe Koon, Director of Water Resources, S.C. Department of Environmental Services

2. Why We Are Here – Scott Harder, Hydrology Section Manager, S.C. Department of Environmental Services

Why is water planning important to all South Carolina citizens?

Where are we in the planning process, how did we get here, and where are we going?

3. Santee River Basin Planning – Brooke Czwartacki, Hydrology Section, S.C. Department of Environmental Services

What is a River Basin Plan and how will the River Basin Plan be developed?

4. Next Steps for Santee River Basin Planning – Scott Harder, Hydrology Section Manager, S.C. Department of Environmental Services

What are the next steps for Santee River Basin Planning?

How can stakeholders apply to be on the Santee River Basin Council?

What are other ways stakeholders can be involved?

5. Lower Savannah-Salkehatchie River Basin Planning – Ken Caldwell, Chair of the Lower Savannah-Salkehatchie River Basin Council, Alliant Insurance Services

The Lower Savannah-Salkehatchie River Basin Council Vice Chair will share his perspective on State water planning and his experience with the Lower Savannah-Salkehatchie basin planning process.

6. Comments from the Planning Process Advisory Committee and Q&A Session – moderated by Dr. Jeff Allen, Clemson University.

Former PPAC members will share their perspectives on water planning and along with SCDES address any comments or questions about the Planning Framework and river basin planning activities.

Let us hear from you. We welcome your questions and feedback.

“WaterSC” Water Resources Working Group

- Established by Governor’s Executive Order No. 2024-22 in September 2024.
- By October 31, 2024, WaterSC will publish a Stakeholder Engagement Plan for the development of an updated State Water Plan.
- By January 31, 2025, WaterSC will provide a report to the Surface Water Study Committee making recommendations regarding any necessary additions or changes to current surface water withdrawal law.
- WaterSC will advise and assist SCDES regarding state water resources policy, such that SCDES may issue an updated State Water Plan by December 31, 2025.

“WaterSC” Water Resources Working Group

- Chaired by Myra Reece, Interim Director of SCDES.
- Includes representatives from
 - **SC Office of Resilience**
 - **SC Parks, Recreation and Tourism**
 - **SC Department of Commerce**
 - **SC Department of Agriculture**
 - **SC Department of Natural Resources**
- Includes up to 25 participants from various sectors and categories:
 - **Academia**
 - **Public Water Suppliers**
 - **Conservation**
 - **Agriculture**
 - **Forestry**
 - **Energy**
 - **Tourism**
 - **Historical preservation**
 - **Professional Expertise**

Santee River Basin Planning Public Meeting #2

1. **Welcome and Opening Remarks** – Dr. Jeff Allen, Clemson University and Joe Koon, Director of Water Resources, S.C. Department of Environmental Services

2. **Why We Are Here – Scott Harder, Hydrology Section Manager, S.C. Department of Environmental Services**

Why is water planning important to all South Carolina citizens?

Where are we in the planning process, how did we get here, and where are we going?

3. **Santee River Basin Planning** – Brooke Czwartacki, Hydrology Section, S.C. Department of Environmental Services

What is a River Basin Plan and how will the River Basin Plan be developed?

4. **Next Steps for Santee River Basin Planning** – Scott Harder, Hydrology Section Manager, S.C. Department of Environmental Services

What are the next steps for Santee River Basin Planning?

How can stakeholders apply to be on the Santee River Basin Council?

What are other ways stakeholders can be involved?

5. **Lower Savannah-Salkehatchie River Basin Planning** – Ken Caldwell, Chair of the Lower Savannah-Salkehatchie River Basin Council, Alliant Insurance Services

The Lower Savannah-Salkehatchie River Basin Council Vice Chair will share his perspective on State water planning and his experience with the Lower Savannah-Salkehatchie basin planning process.

6. **Comments from the Planning Process Advisory Committee and Q&A Session** – moderated by Dr. Jeff Allen, Clemson University.

Former PPAC members will share their perspectives on water planning and along with SCDES address any comments or questions about the Planning Framework and river basin planning activities.

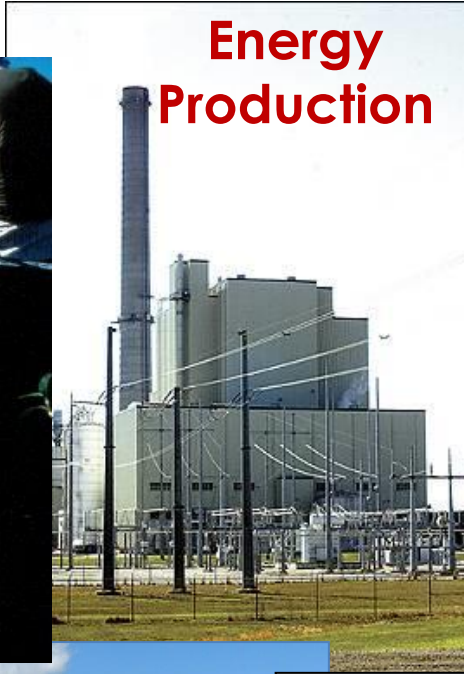
Let us hear from you. We welcome your questions and feedback.

Why Are We Here?

“The effective management of South Carolina’s water resources is beyond the scope of any one agency or organization and will require cooperation and shared responsibility among federal, state, and local agencies, as well as public and private parties.”
- South Carolina Water Plan (2004)



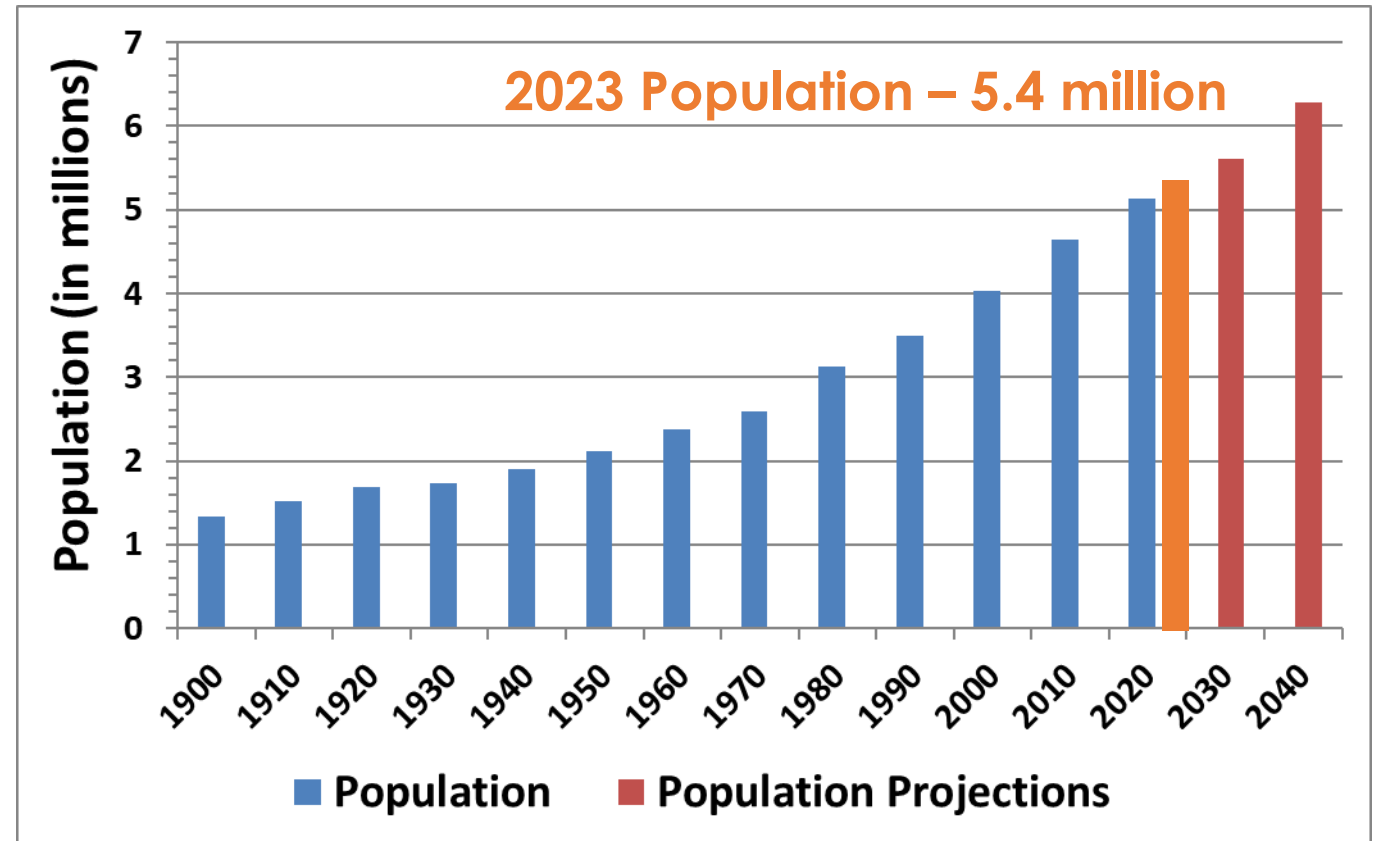
Water Use in South Carolina



Why State Water Planning?

Population Growth → Increased Water Demand

- From 1990 – 2023, SC population increased from **3.5** to **5.4** million and is forecasted to increase to **6.3** million by 2040.
- Our growing population may increase future water demands and may increase competition for our water supplies.



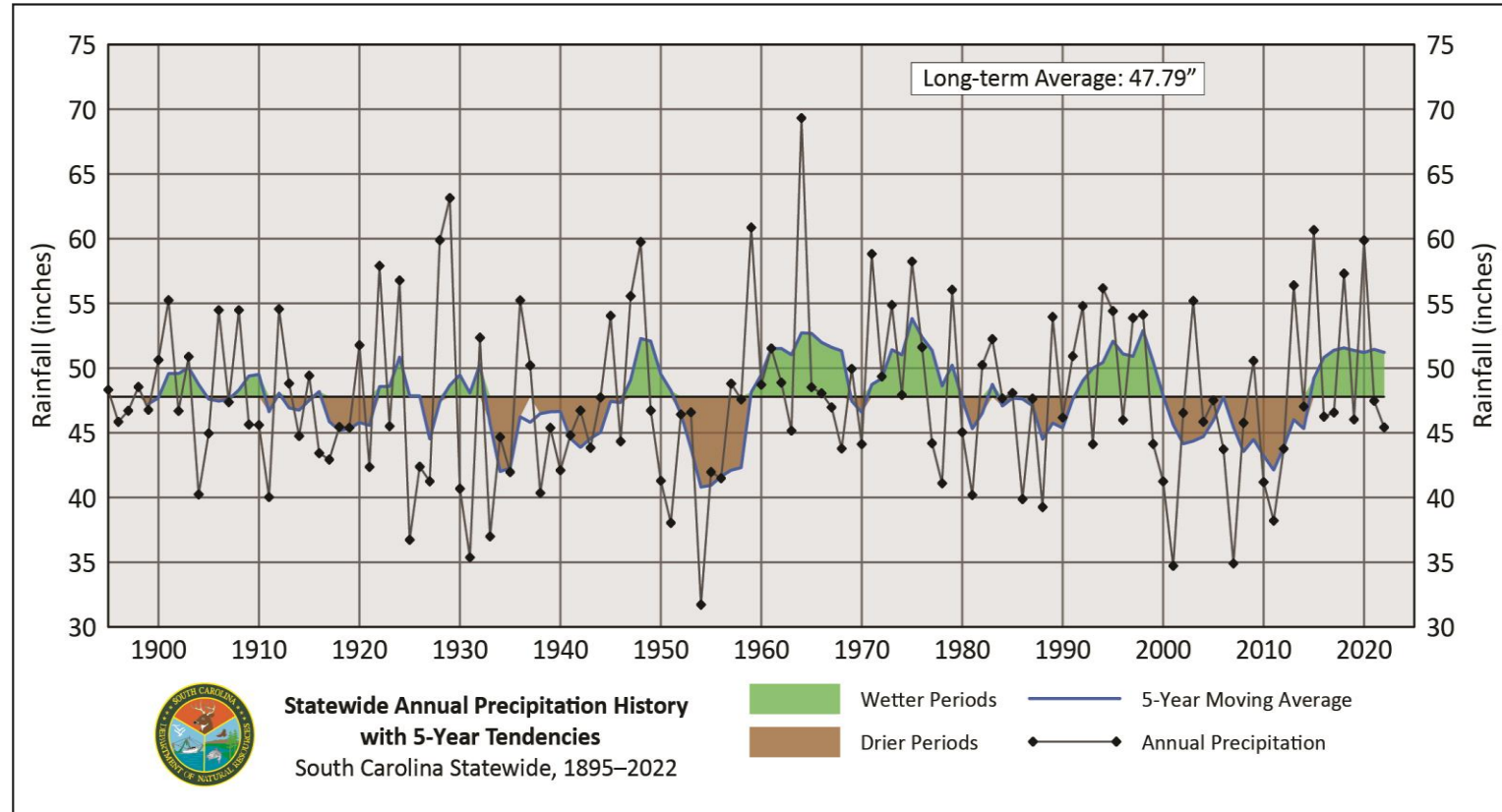
SC Population Growth from 1900 – 2023 and Projections for 2030 – 2040

Data from the SC Office of Revenue and Fiscal Affairs, 2024, and U.S. Census Bureau, 2024.

Why State Water Planning?

Drought

SC generally has an abundance of water, but recent droughts (**1998-2002, 2007-2008, 2011-2012, 2016, 2019, 2021, 2024**) have stressed the State's water resources.



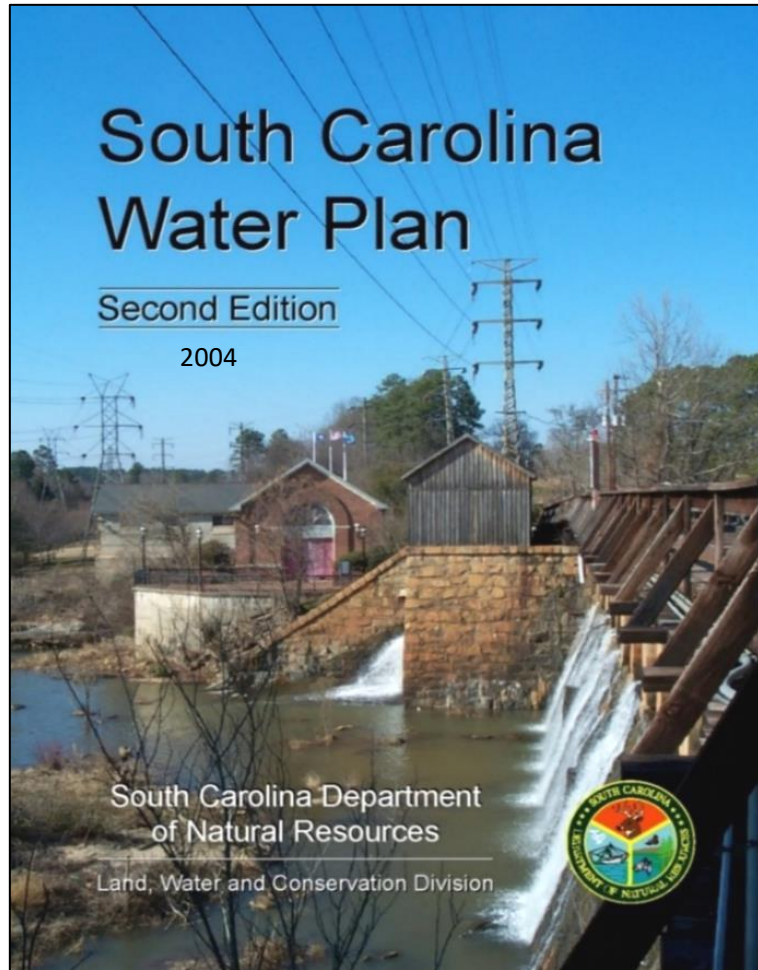
Why State Water Planning?

Tree-ring studies indicate the occurrence of more severe and longer-term droughts (Mega-droughts) over the past 400 years.

***Uncertainty in future droughts + increased water demand
= the need for comprehensive State and river basin planning.***



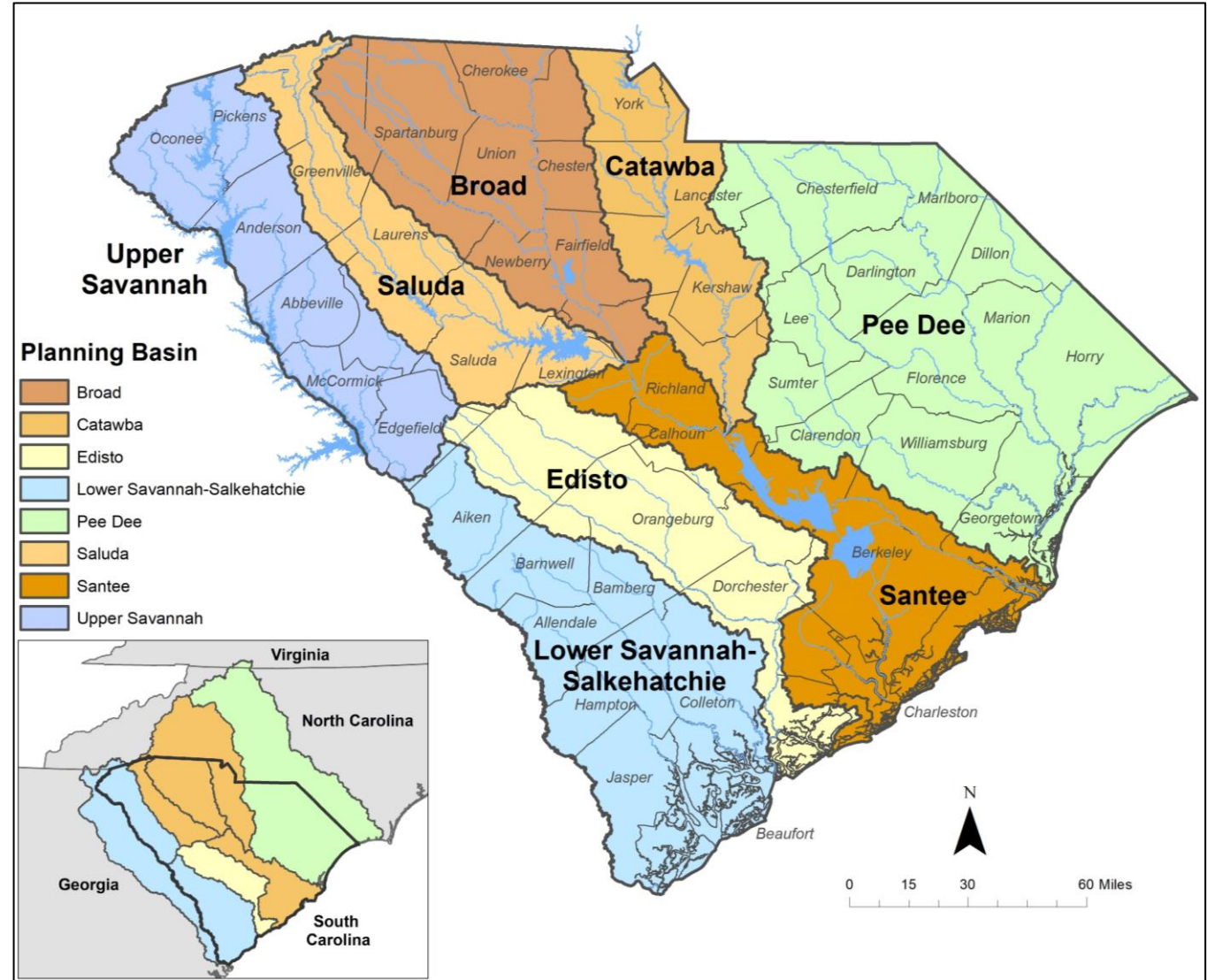
History of State Water Planning



- Prior to July 1, 2024, state water planning was the responsibility of SCDNR:
 - SCDNR published the first edition of the State Water Plan in 1998.
 - In 2004, SCDNR published the second edition of the South Carolina Water Plan incorporating lessons learned from the drought of 1998-2002.
 - One recommendation was to develop a regional water plan for each major river basin in the State.
 - In 2014, SCDNR initiated the first steps to developing regional water plans, now formerly called River Basin Plans.
- ***Pursuant to Act 60 of 2023 and effective July 1, 2024, water planning responsibilities were transferred to SCDES.***

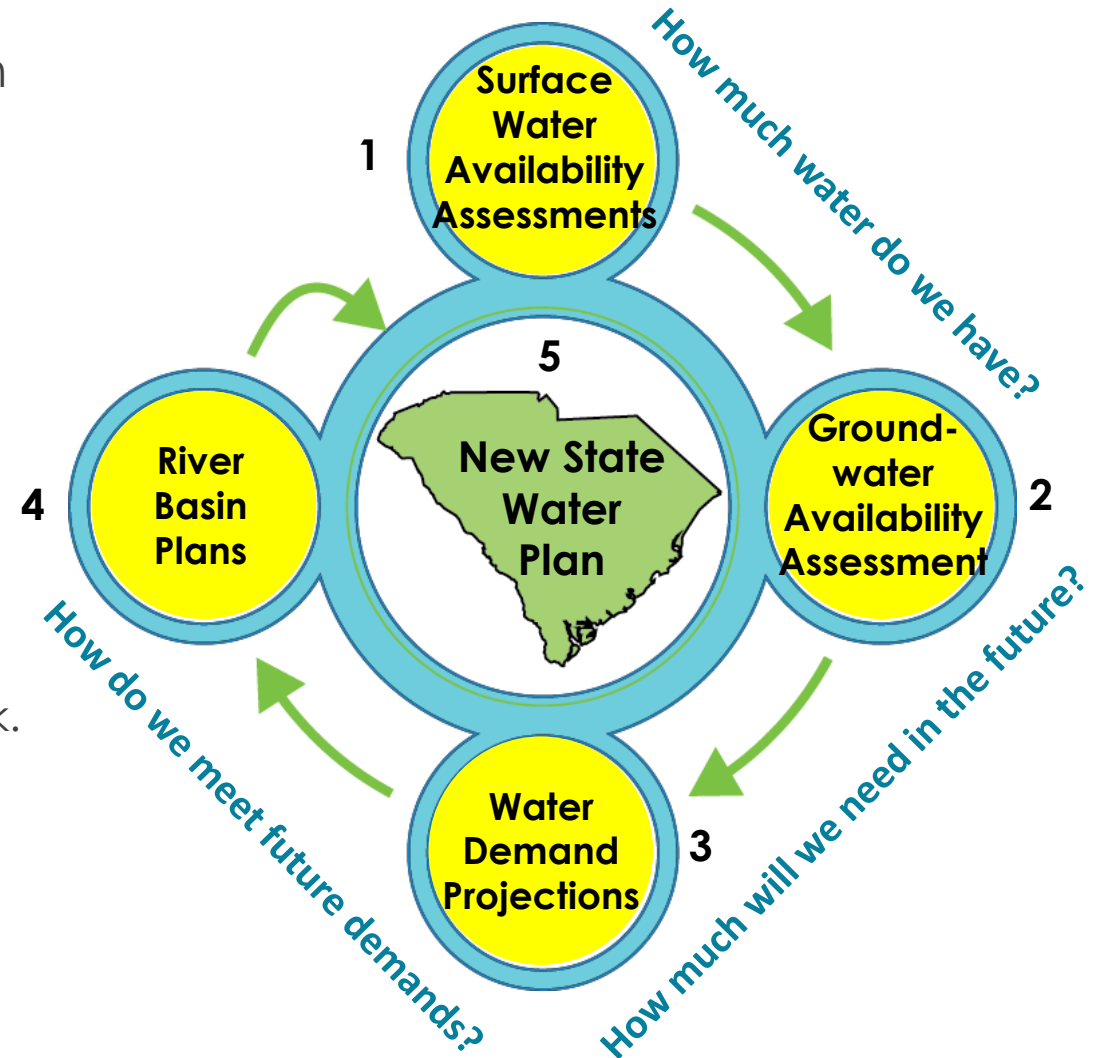
South Carolina's Eight Planning Basins

- River Basin Plans will be developed for the State's eight major river basins using a "bottom-up" approach where stakeholders in each basin lead the development of their basin plan.
- Collectively, the River Basin Plans will form the foundation of a new State Water Plan.



Five-step Process

- 1. Surface Water Assessments** – completed in 2017 for each basin (CDM Smith, Inc).
- 2. Groundwater Assessment** – In progress (USGS).
 - Models will not be available for first iteration of planning.
- 3. Water Demand Projections** – methodology report completed in October 2019.
 - Projections completed for Edisto, Broad, Pee Dee, and Upper Savannah basins.
 - Projections for Lower Savannah-Salkehatchie and Santee basins in progress.
- 4. River Basin Plans**
 - Publication of South Carolina State Water Planning Framework.
 - River Basin Plan for Edisto and Broad are complete.
 - Lower Savannah-Salkehatchie, Pee Dee, Catawba, Saluda, and Upper Savannah basin planning in progress.
 - Santee basin is the 8th basin to begin planning activities.
- 5. State Water Plan** – River Basin Plans will form the foundation of a new State Water Plan.

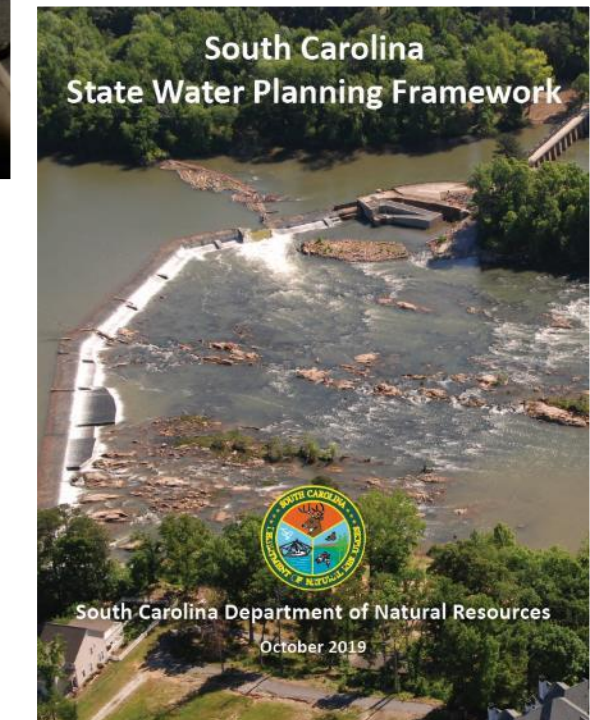


Cooperators:



Planning Process Advisory Committee

- Convened by SCDNR in March 2018.
- Purpose - develop a guidance document (Planning Framework) for developing River Basin Plans and for updating the State Water Plan.
- South Carolina State Water Planning Framework (Planning Framework) was published in October 2019 after an 18-month process.
- **New WaterSC committee has recently replaced the PPAC.**



Planning Framework is available for review and download at:

<https://des.sc.gov/programs/bureau-water/hydrology/water-planning>

PPAC Committee Members

Jeffery Allen

David Baize

David Bereskin/Jeff Boss

Jesse Cannon

Fred Castles, III

Clay Duffie

Steve Hamilton

Erika Hollis

J.J. Jowers, Jr.

Eric Krueger

Jeff Lineberger

Jill Miller

Dean Moss, Jr.

Myra Reece

Ken Rentiers

Bill Stangler

Landrum Weathers

Scott Willett

Charles Wingard

Clemson University

SCAWWA/WEASC

Greenville Water

Santee Cooper

Catawba-Wateree Water
Management Group

Mt. Pleasant Waterworks (retired)

The Dunes Golf and Beach Club

Upstate Forever

Bamberg County citizen, Edisto
Engineers and Surveyors, Inc.

The Nature Conservancy

Duke Energy

South Carolina Rural Water Association

Beaufort Jasper WSA (retired)

South Carolina Department of
Health and Environmental Control

South Carolina Department of Natural Resources

Congaree Riverkeeper

Farmer

Anderson Regional Joint Water System

Walter P. Rawl and Sons, Inc.



For more information, visit:

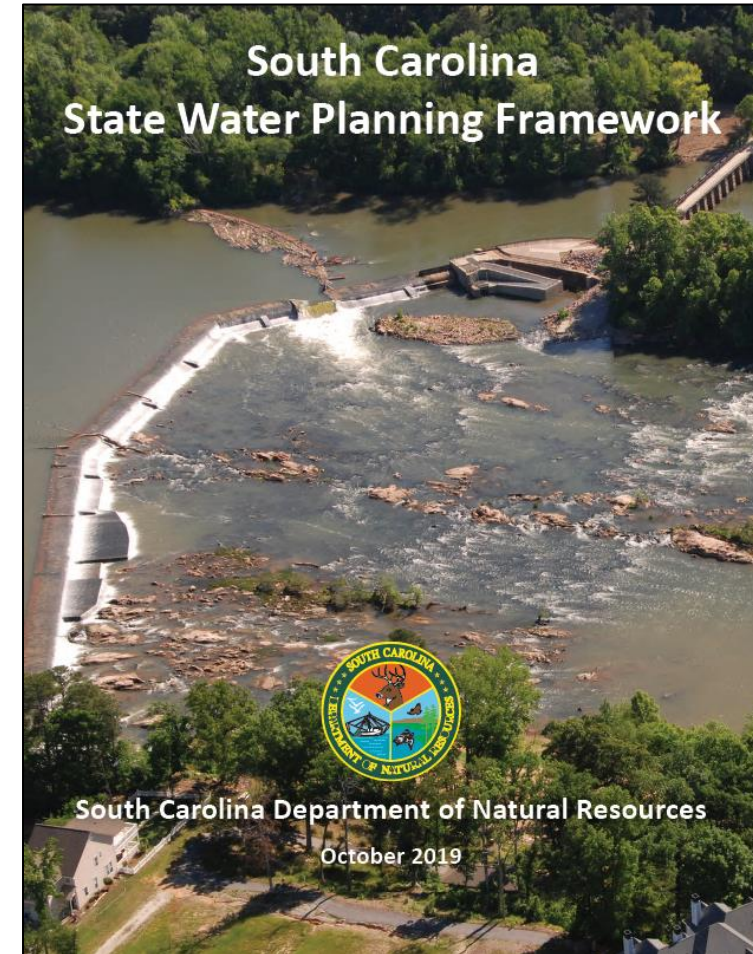
[https://www.clemson.edu/public/water-assessment/State Water Planning Process
Advisory Committee.html](https://www.clemson.edu/public/water-assessment/State_Water_Planning_Process_Advisory_Committee.html)



Contents of Planning Framework

Sections:

1. Executive Summary
 2. Introduction
 3. River Basin Planning Process
 4. Methodologies for Evaluating Water Availability
 5. River Basin Plan Table of Contents
 6. River Basin Planning Process Implementation
 7. River Basin Plan Implementation
 8. State Water Plan
- Appendix: River Basin Council Bylaws



Planning Framework is available for review and download at:

<https://des.sc.gov/programs/bureau-water/hydrology/water-planning>

Stakeholder Participation

Edisto River Basin Council Field Trip



PPAC Meeting



Broad River Basin Council Meeting



Pee Dee River Basin Council Meeting



Edisto Basin Water Demand Projection Stakeholder Meeting



SWAM Model Stakeholder Meeting



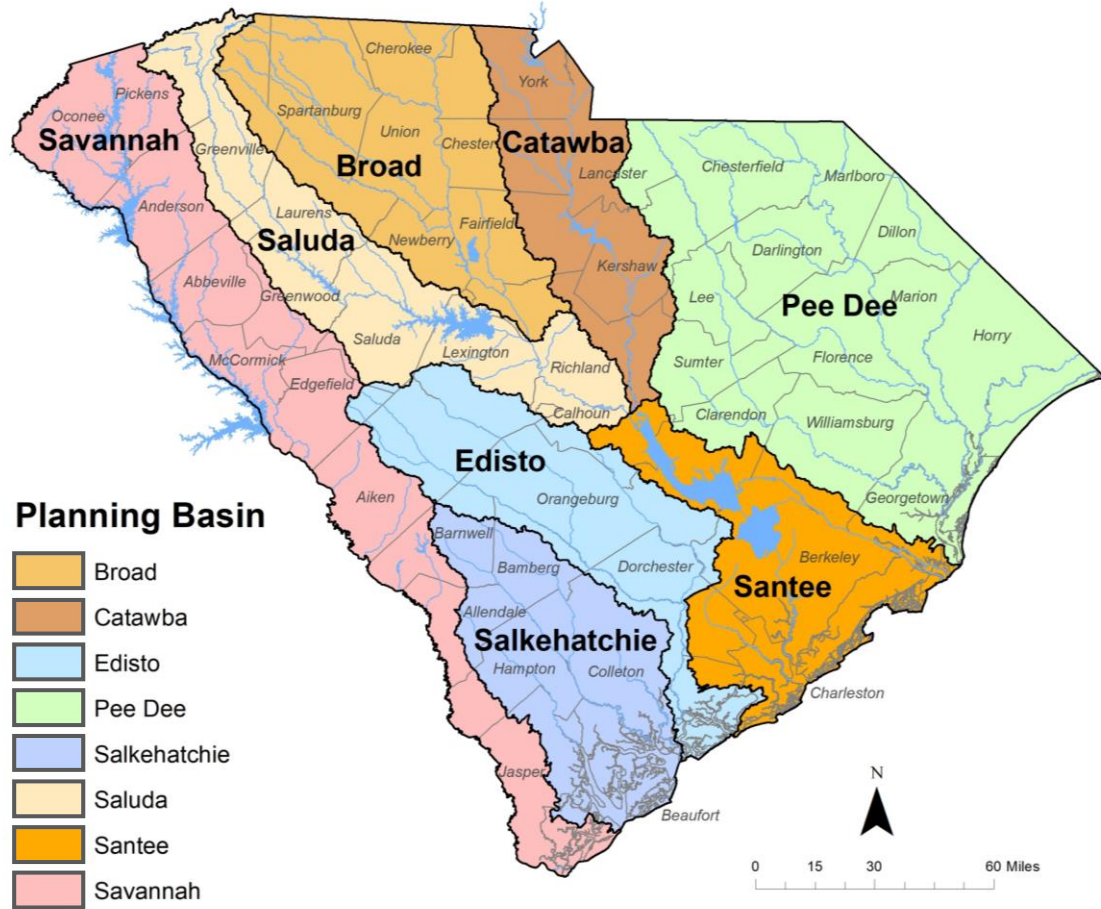


SC River Basin Planning: Status and Long-Term Schedule

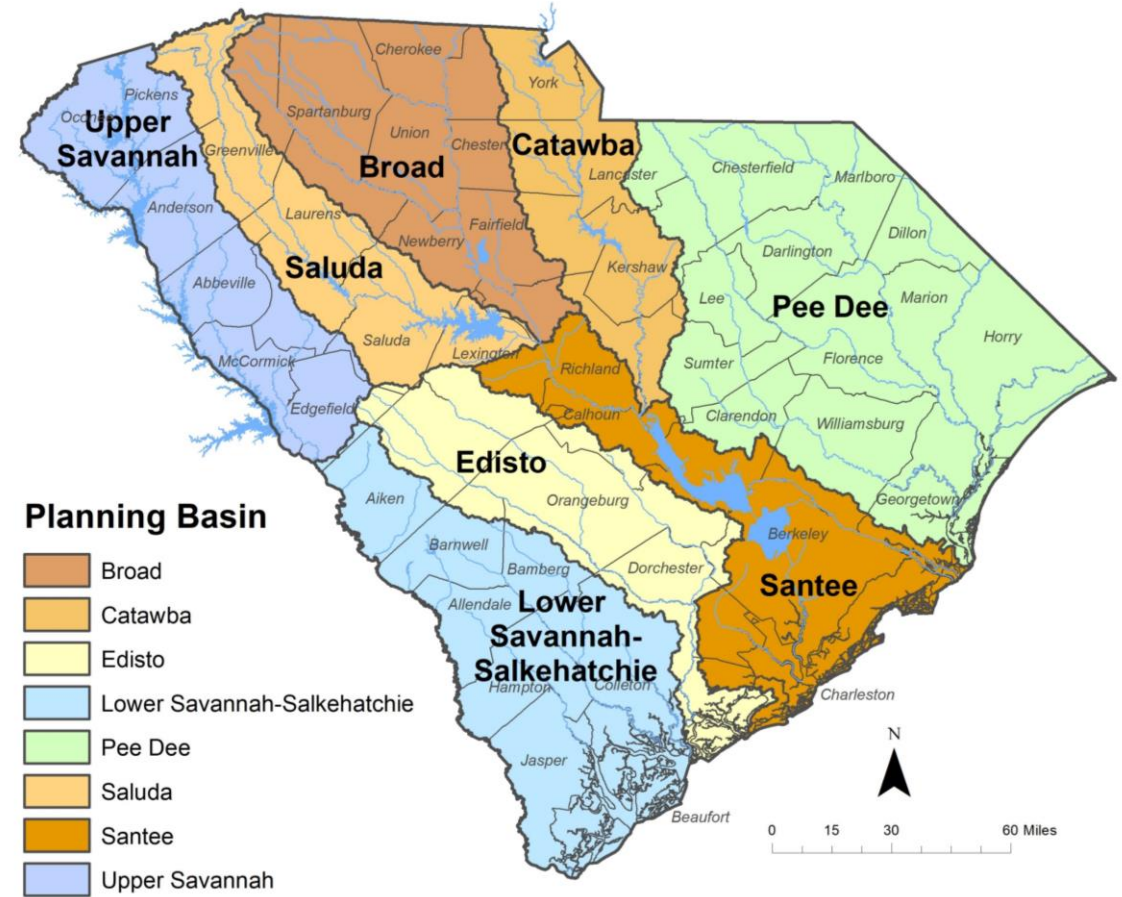


Recent Changes to Planning Basin Boundaries

Original Planning Basins



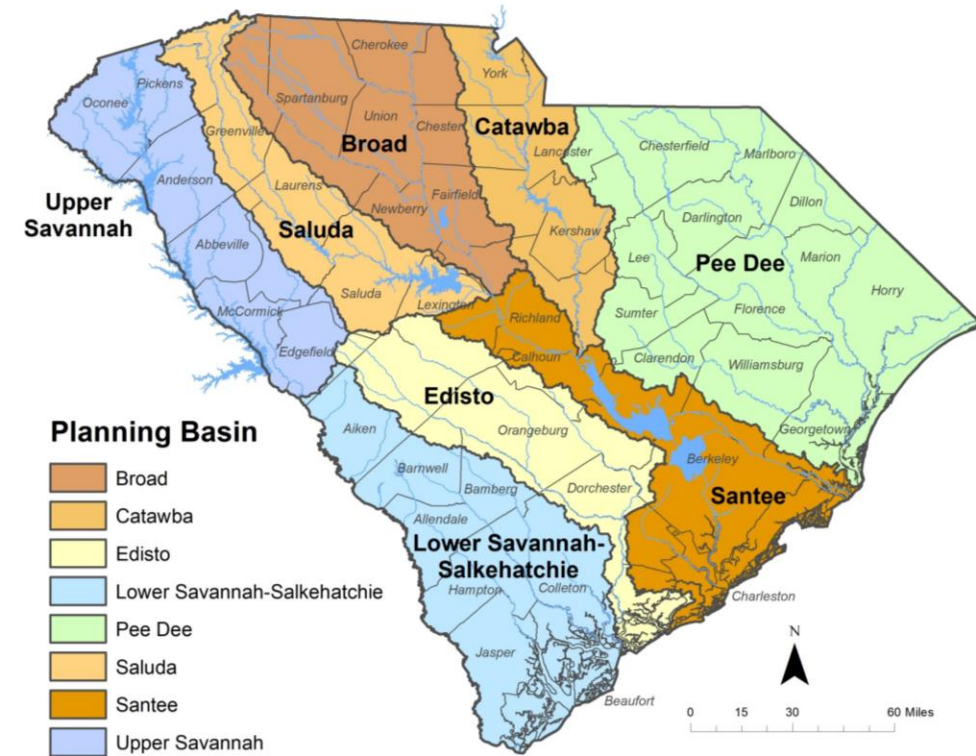
Revised Planning Basins



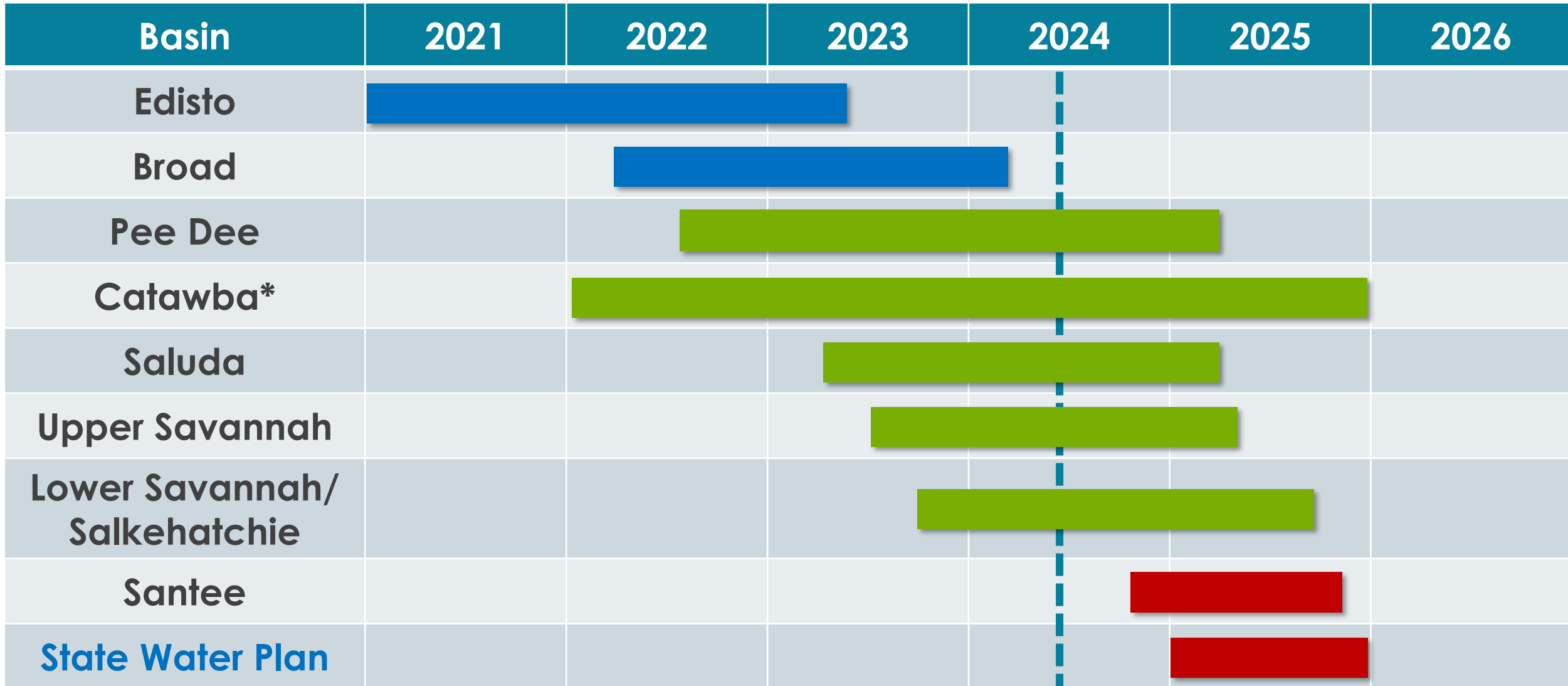
Impacted basins include the Salkehatchie, Saluda, Santee, and Savannah basins

River Basin Planning Current Status

Basin	Status
Edisto	Completed
Broad	Completed
Pee Dee	June 2022 – present
Saluda	March 2023 – present
Upper Savannah	July 2023 – present
Lower Savannah/Salkehatchie	November 2023 – present
Santee	Scheduled to begin Fall 2024
Catawba	CWWMG's Integrated Resource Plan – 2020 – present



State Water Plan - Schedule



* Catawba-Wateree Water Management Group's Integrated Water Resources Plan

Completed River Basin Plans



EDISTO RIVER BASIN PLAN 2023



BROAD RIVER BASIN PLAN 2024

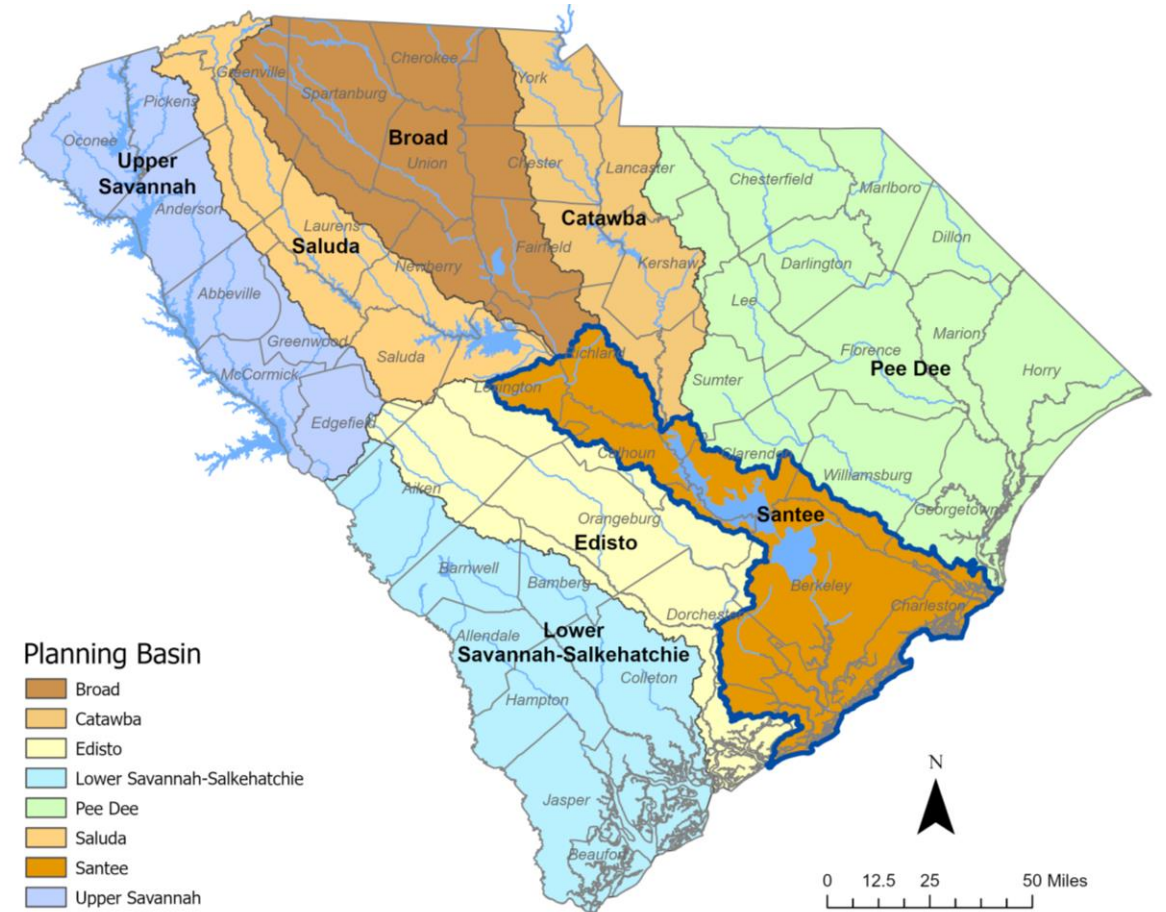


Plans available for review at:

<https://des.sc.gov/programs/bureau-water/hydrology/water-planning>

Where Are We Now?

Ready to start the Santee River basin planning process under the guidance of the Planning Framework



Santee River Basin Planning Public Meeting #2

- 1. Welcome and Opening Remarks** – Dr. Jeff Allen, Clemson University and Joe Koon, Director of Water Resources, S.C. Department of Environmental Services
- 2. Why We Are Here** – Scott Harder, Hydrology Section Manager, S.C. Department of Environmental Services
 - Why is water planning important to all South Carolina citizens?*
 - Where are we in the planning process, how did we get here, and where are we going?*
- 3. Santee River Basin Planning – Brooke Czwartacki, Hydrology Section, S.C. Department of Environmental Services**
 - What is a River Basin Plan and how will the River Basin Plan be developed?***
- 4. Next Steps for Santee River Basin Planning** – Scott Harder, Hydrology Section Manager, S.C. Department of Environmental Services
 - What are the next steps for Santee River Basin Planning?*
 - How can stakeholders apply to be on the Santee River Basin Council?*
 - What are other ways stakeholders can be involved?*
- 5. Lower Savannah-Salkehatchie River Basin Planning** – Ken Caldwell, Chair of the Lower Savannah-Salkehatchie River Basin Council, Alliant Insurance Services
 - The Lower Savannah-Salkehatchie River Basin Council Vice Chair will share his perspective on State water planning and his experience with the Lower Savannah-Salkehatchie basin planning process.*
- 6. Comments from the Planning Process Advisory Committee and Q&A Session** – moderated by Dr. Jeff Allen, Clemson University.
 - Former PPAC members will share their perspectives on water planning and along with SCDES address any comments or questions about the Planning Framework and river basin planning activities.*
 - Let us hear from you. We welcome your questions and feedback.*

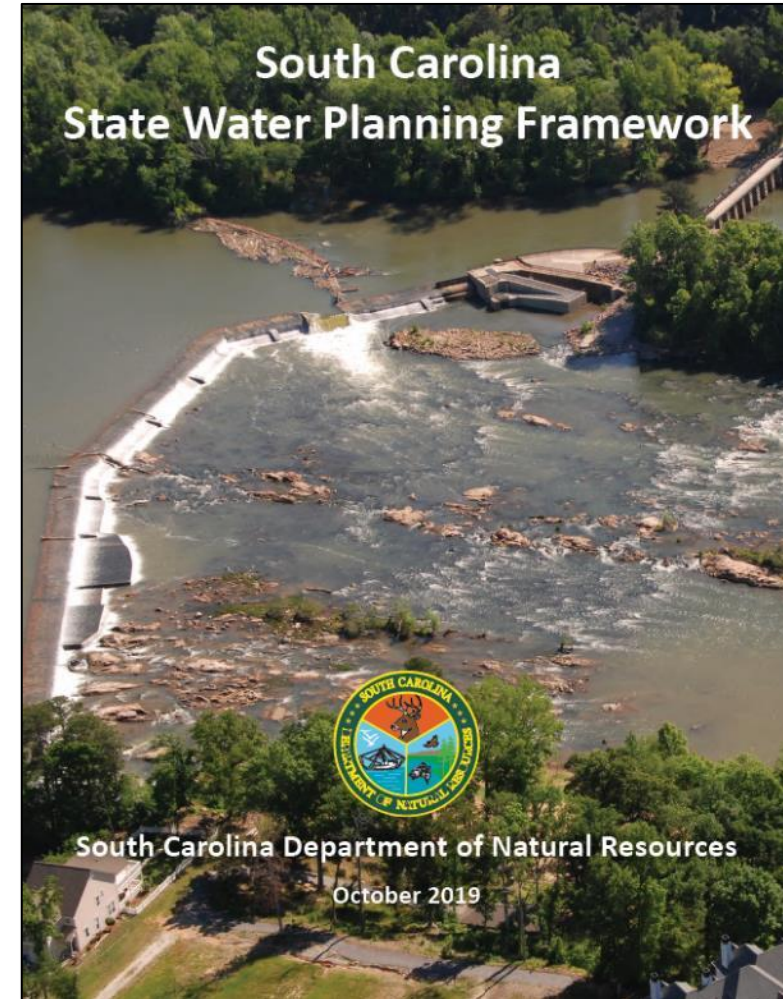


What is a River Basin Plan?

What is a River Basin Plan?

A River Basin Plan answers four questions:

1. What is the basin's current available water supply and demand?
2. What are the current permitted and registered water uses?
3. What will be the basin's water demand over the Planning Horizon, and will the water supply meet the demand?
4. What water management strategies will be employed to ensure the supply meets or exceeds the projected demand over the Planning Horizon?



Proactive Water Management, not Reactive!

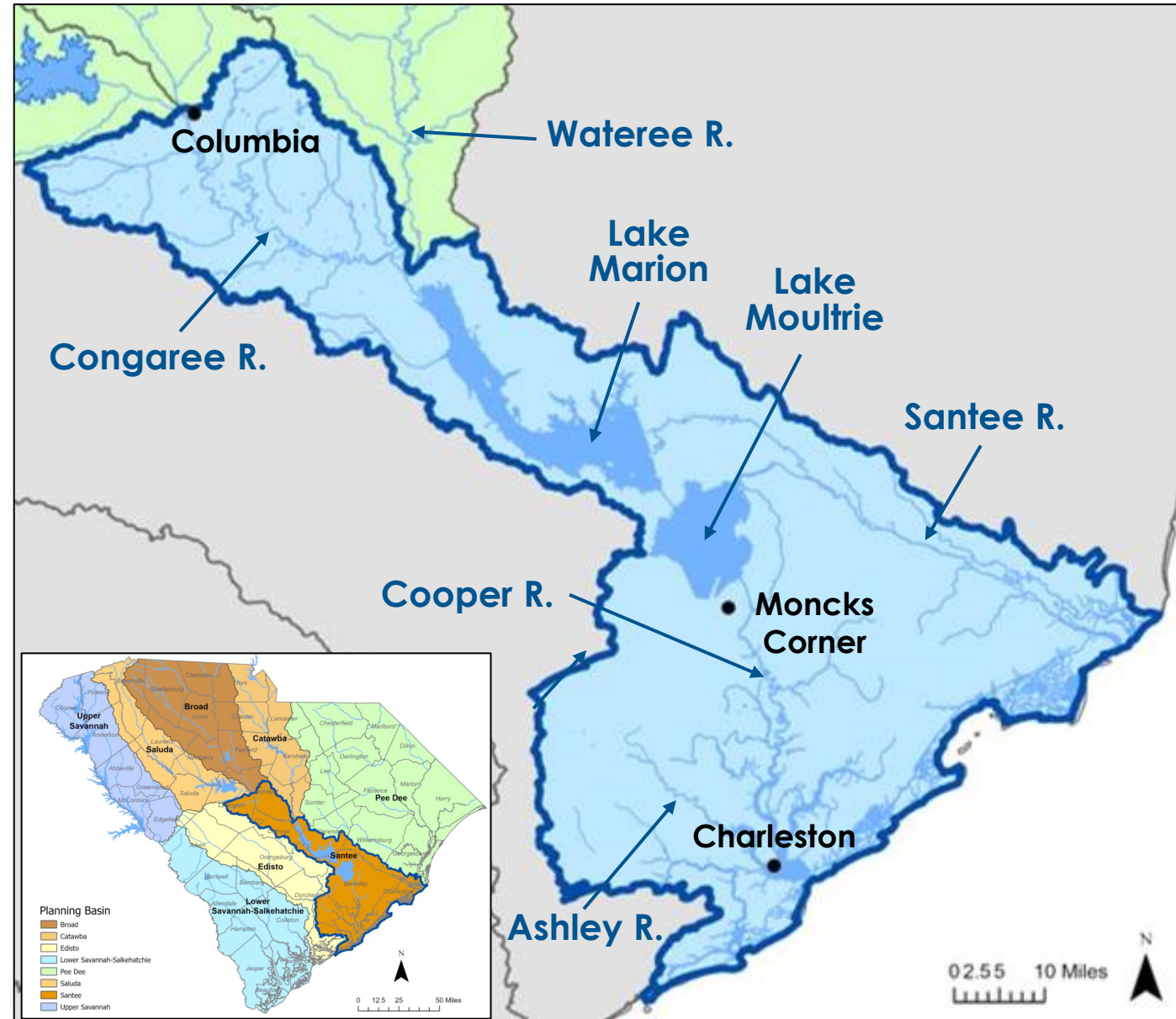
Santee Basin Overview

- Headwaters in the mountains of SC and NC.
- 2nd largest basin in the Carolinas.
- Area = 17,145 sq. mi.
 - SC – 12,345 sq. mi. (72%)
 - NC – 4,800 sq. mi. (28%)
- Lower Santee planning basin downstream of 3 other major river basins.
 - Broad, Catawba, Saluda
- Significant regulation from reservoirs and hydroelectric projects operated by Duke, Dominion, Santee Cooper, and other smaller power companies.



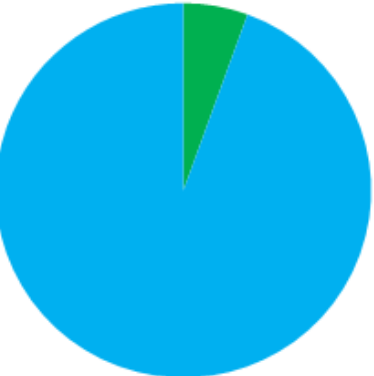
Lower Santee Basin Overview

- Planning basin lies entirely in SC.
 - Includes Congaree, Cooper, and Ashley subbasins.
 - Area = 3,704 sq. mi.
- Major rivers include the Congaree, Santee, Cooper, and Ashley rivers.
- Most rivers and tributaries characterized by swampland with wide flood plains on major rivers.
- Includes two regionally important reservoirs – Lake Moultrie and Lake Marion.

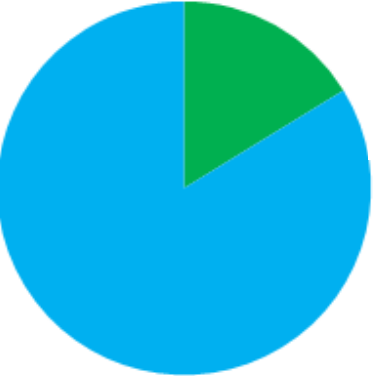


2023 Lower Santee Water Use

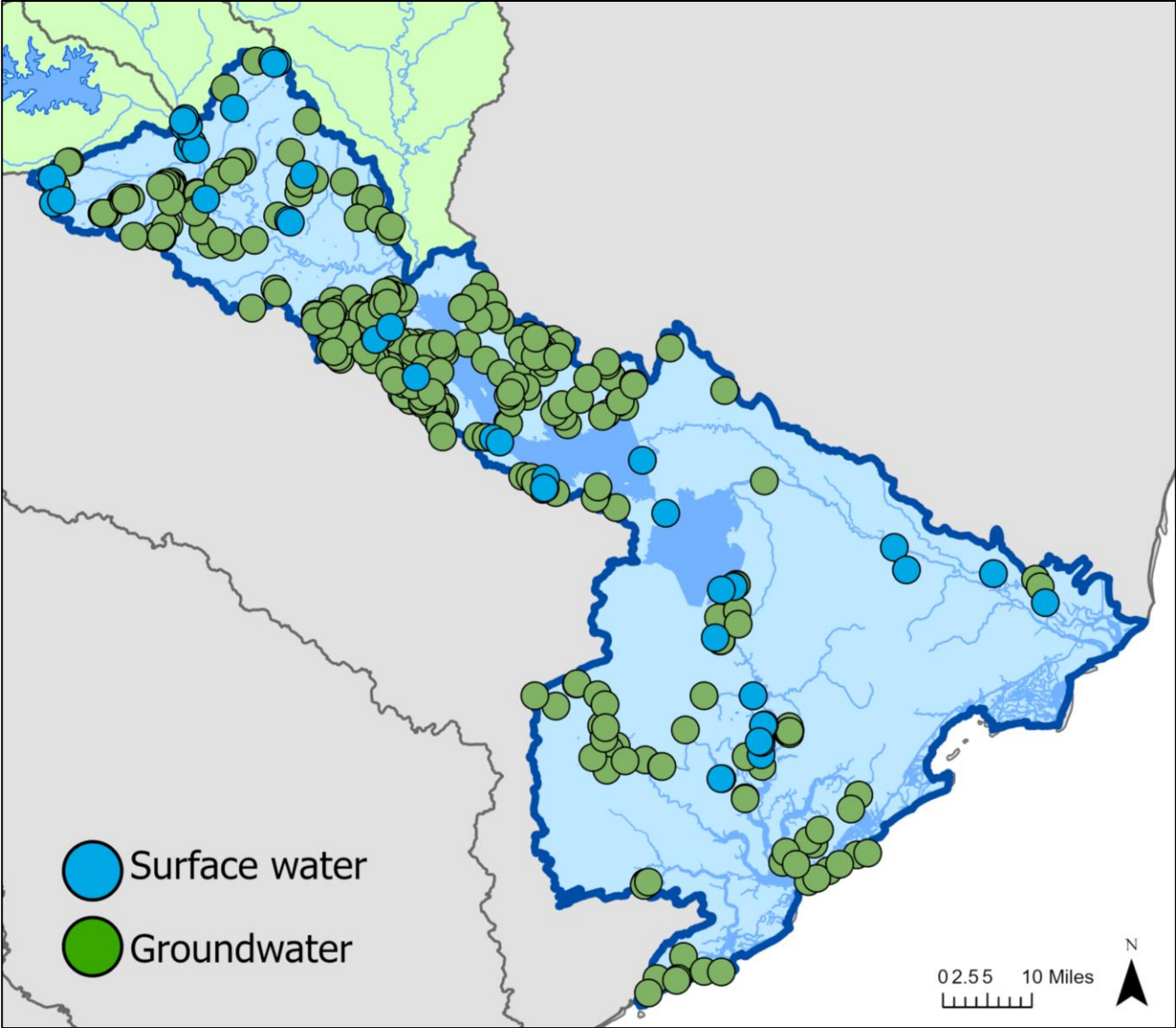
- Both surface water and groundwater are important resources in the basin.



Including Energy
SW : 94% (438 MGD)
GW: 6% (26 MGD)

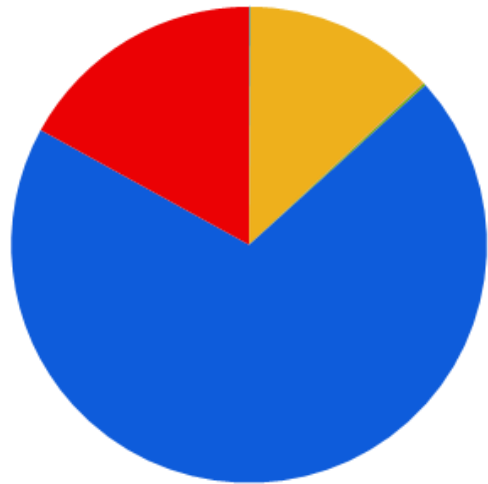


Excluding Energy
SW : 84% (133 MGD)
GW: 16% (26 MGD)

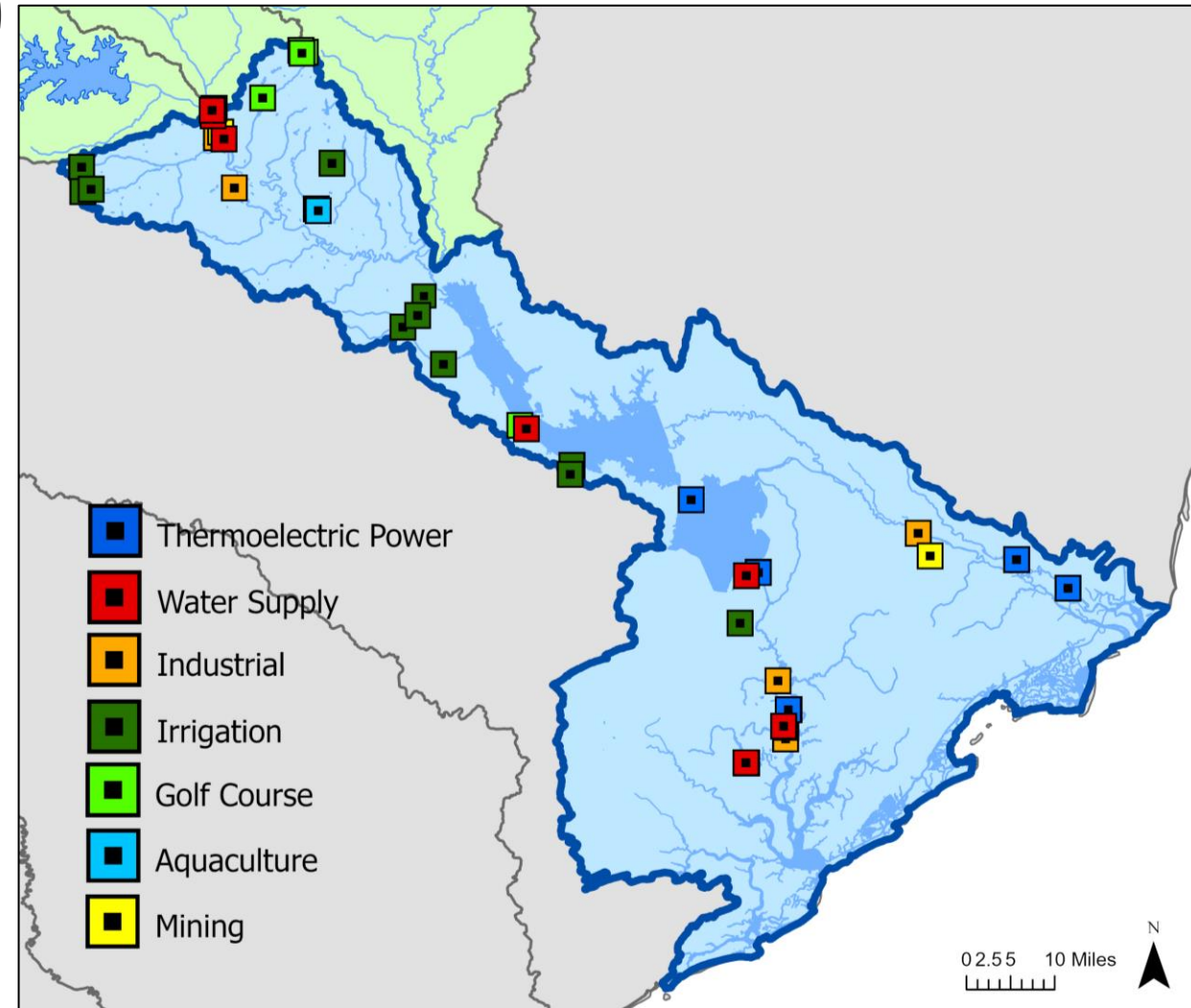


2023 Reported SC Surface Water Withdrawals

- Thermoelectric Power, 70% (305 MGD)
- Water Supply, 17% (74 MGD)
- Industry, 13% (57 MGD)
- Agr. Irrigation, < 1% (0.3 MGD)
- Golf Course, < 1% (0.3 MGD)
- Aquaculture, < 1% (0.1 MGD)
- Mining, < 1% (0.8 MGD)

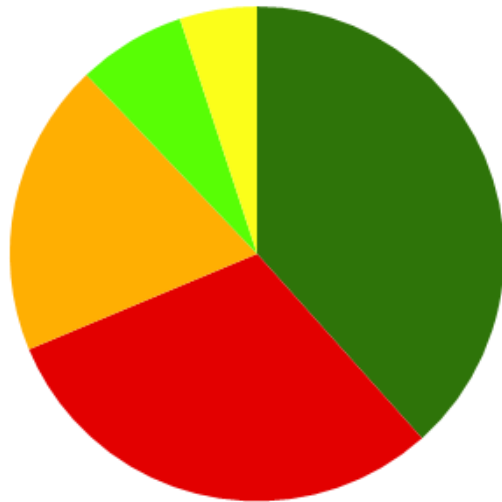


**Total reported SW
withdrawals – 438 MGD**

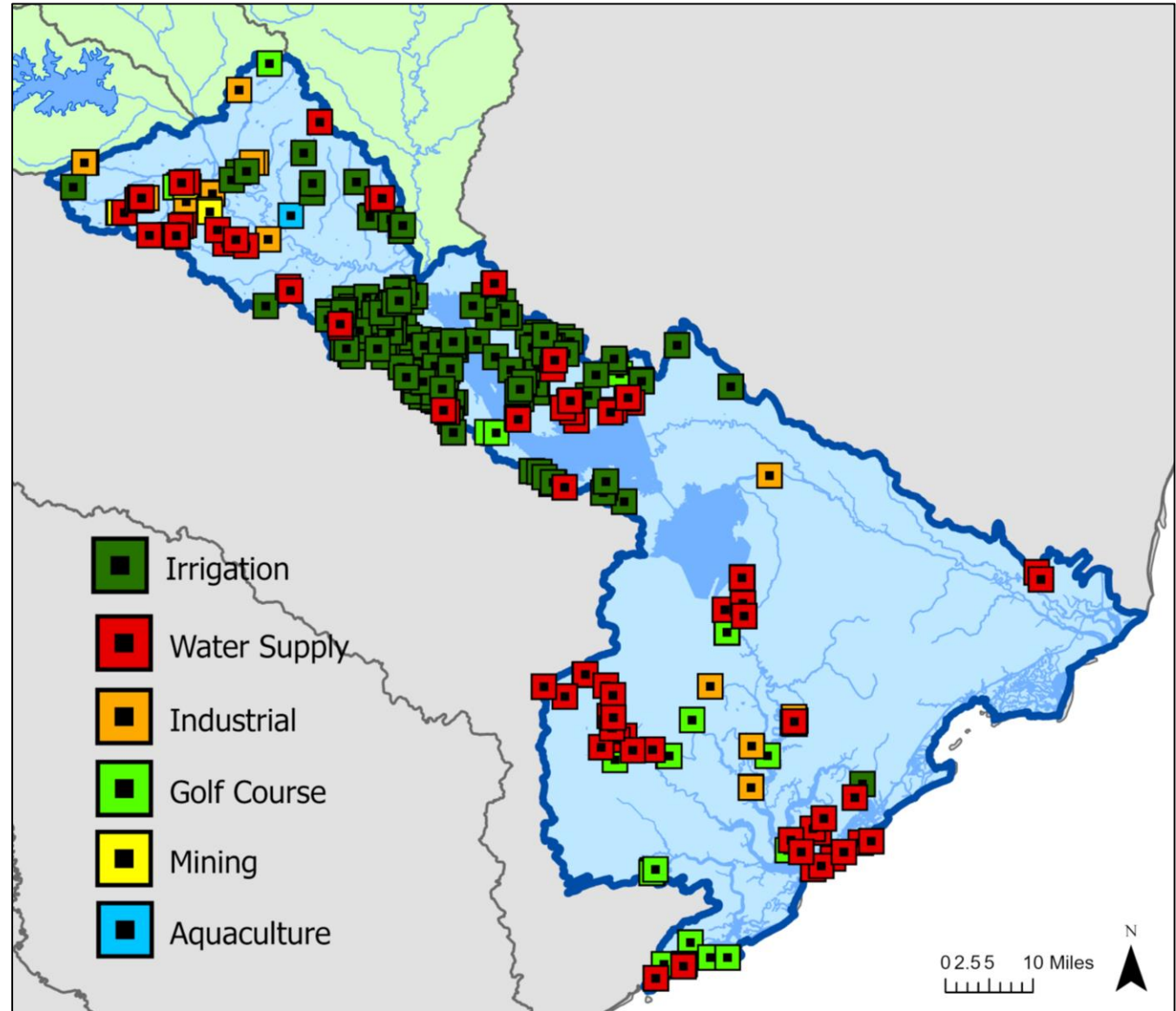


2023 Reported SC Groundwater Withdrawals

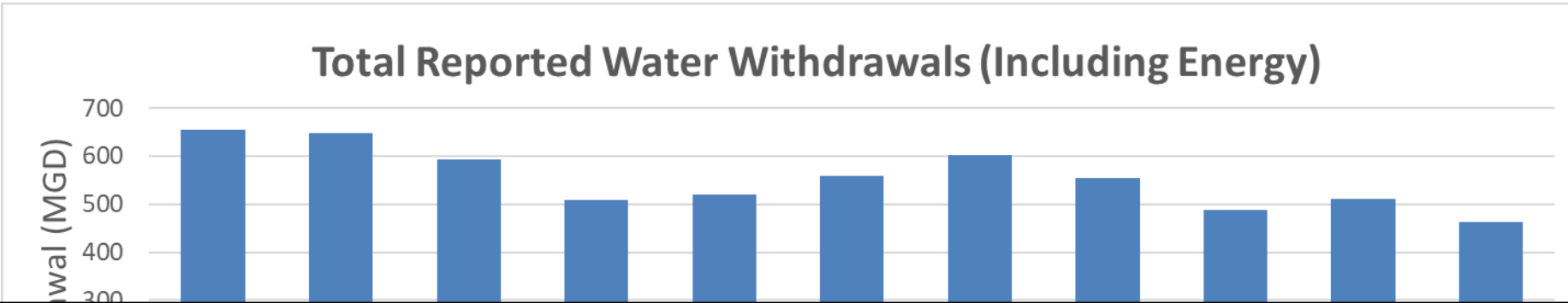
- Agr. Irrigation, 38% (10 MGD)
- Water Supply, 30% (8 MGD)
- Industry, 19% (5 MGD)
- Golf Course, 7% (2 MGD)
- Mining, 5% (1.3 MGD)
- Aquaculture, < 1% (0.02 MGD)



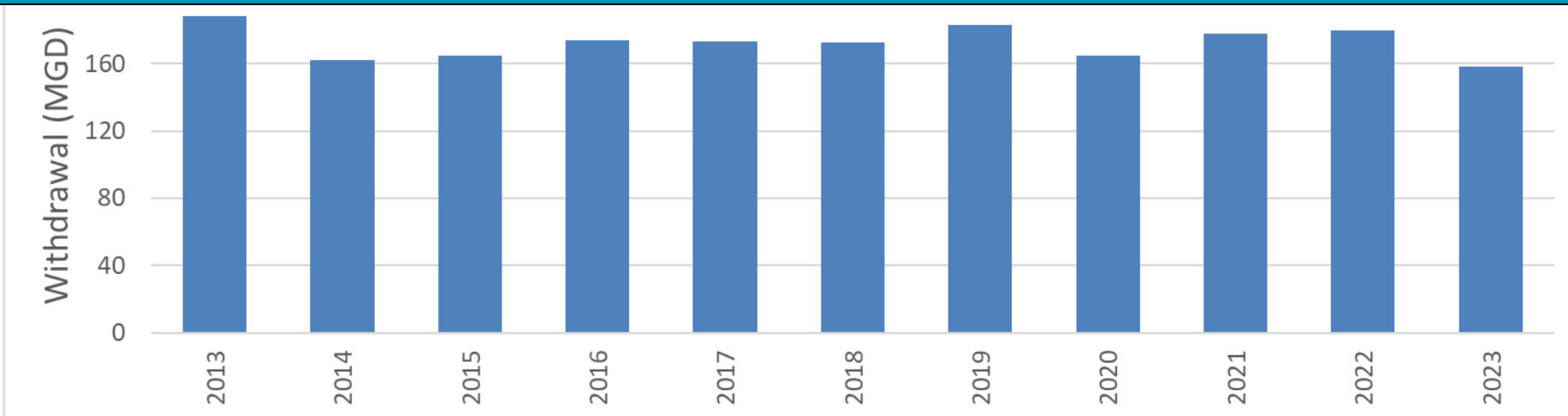
**Total reported GW
withdrawals – 26 MGD**



Reported Water Withdrawals (2013 – 2023)



- How will this demand change over the next 50 years?
- Will we have enough water to meet those demands?
- If not, how can we manage our water resources to meet future demand?

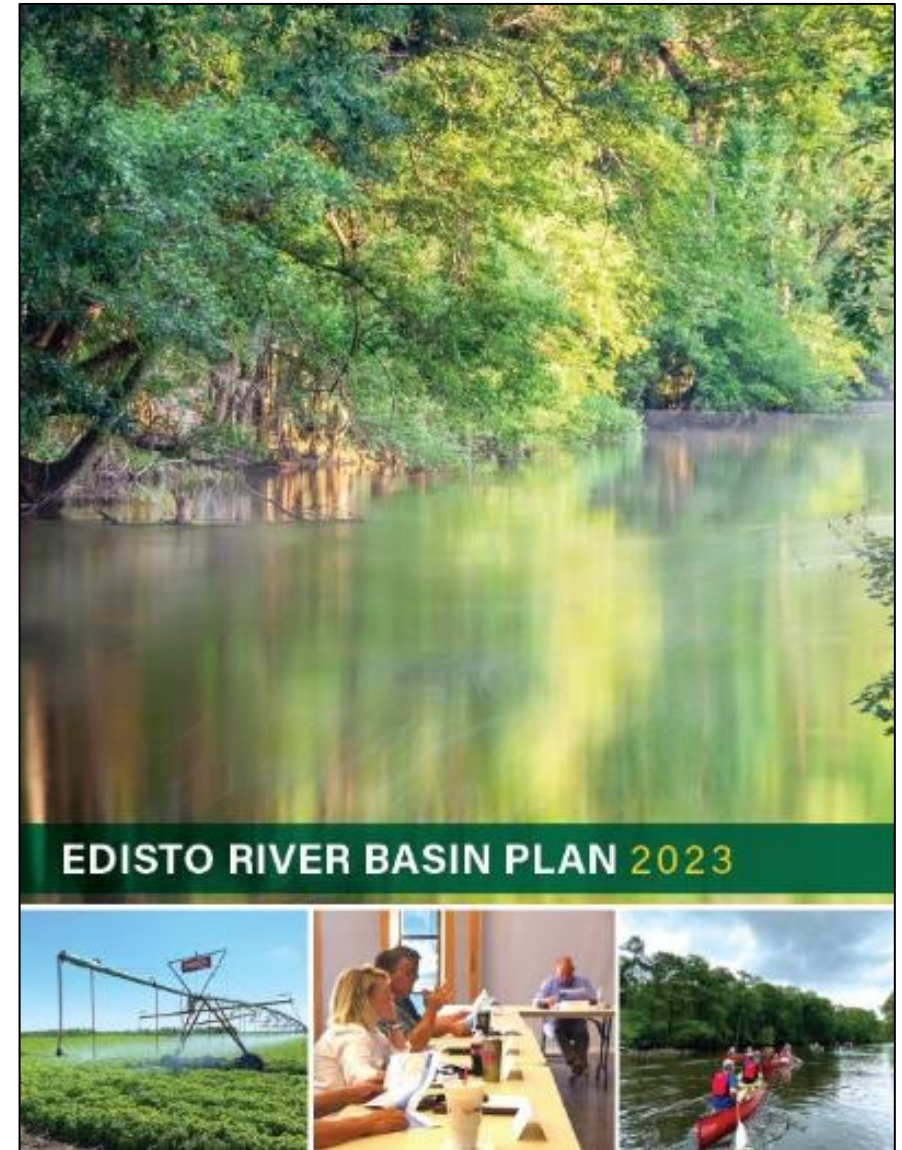


Guiding Principles

- Water is a limited natural resource and is a major factor for economic development and environmental protection.
- River Basin Plans should strive for the equitable use of water resources with the goal of ensuring water is available for all uses, when and where needed, throughout the Planning Horizon and under drought conditions.
- River Basin Plans should protect the public's health and well-being and should balance social, economic, and environmental needs.

Features of a River Basin Plan

- **Stakeholder-developed.**
- Covers a **50-year** Planning Horizon.
- Considers both **surface water** and **groundwater** resources.
- Current focus is on water **quantity** not water **quality** with emphasis on drought conditions.
- **Not a regulatory document** but may include recommendations regarding State water policy, law, and regulations.
- Updated every 5 years – **water planning will be an ongoing process.**
- Supported by hydrologic data, models, and water-demand projections.



River Basin Plan Table of Contents

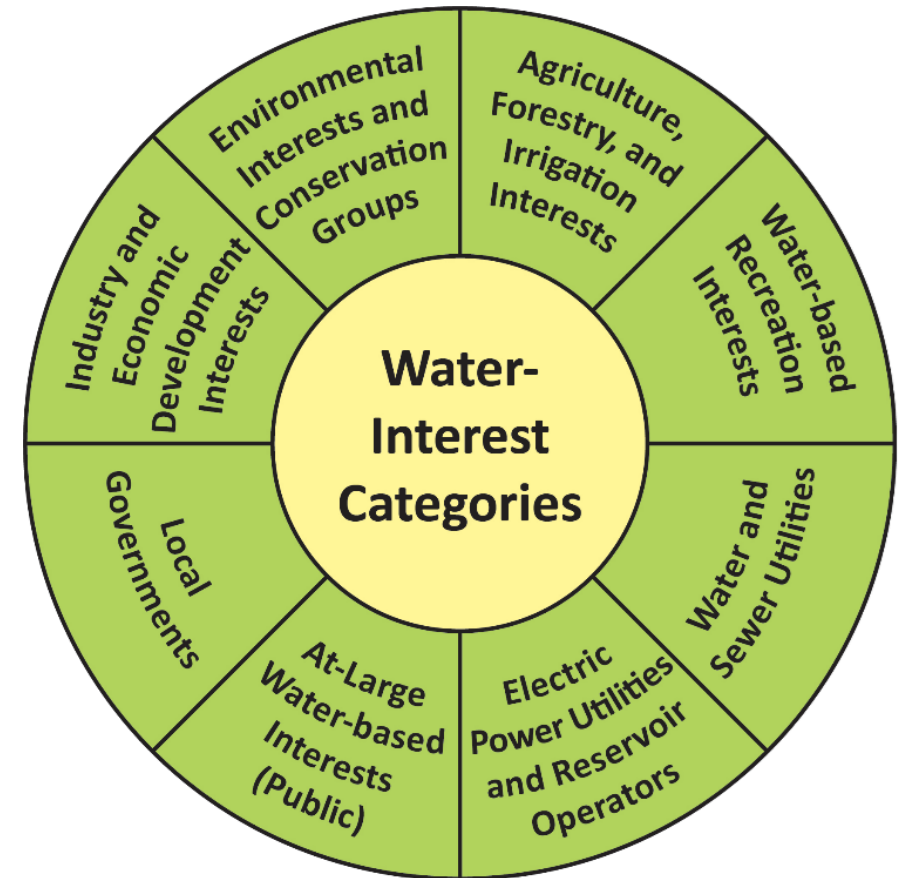
1. Introduction
2. Description of the Basin
3. Water Resources of the Basin
4. Current and Projected Water Demand
5. Comparison of Water Resource Availability and Water Demand
6. Water Management Strategies
7. Water Management Strategy Recommendations
8. Drought Response
9. Policy, Legislative, Regulatory, Technical, and Planning Process Recommendations
10. Implementation Plan



How will the River Basin Plan be Developed?

Planning Framework calls for the formation of a River Basin Council (RBC) in each planning basin

- **Stakeholder-led team** responsible for developing the River Basin Plan.
- **25-30** members representing **8 interest categories**.
- Governed by a set of Bylaws.
- **Consensus based** decision-making process.
- Chair and Vice-Chair elected by RBC.



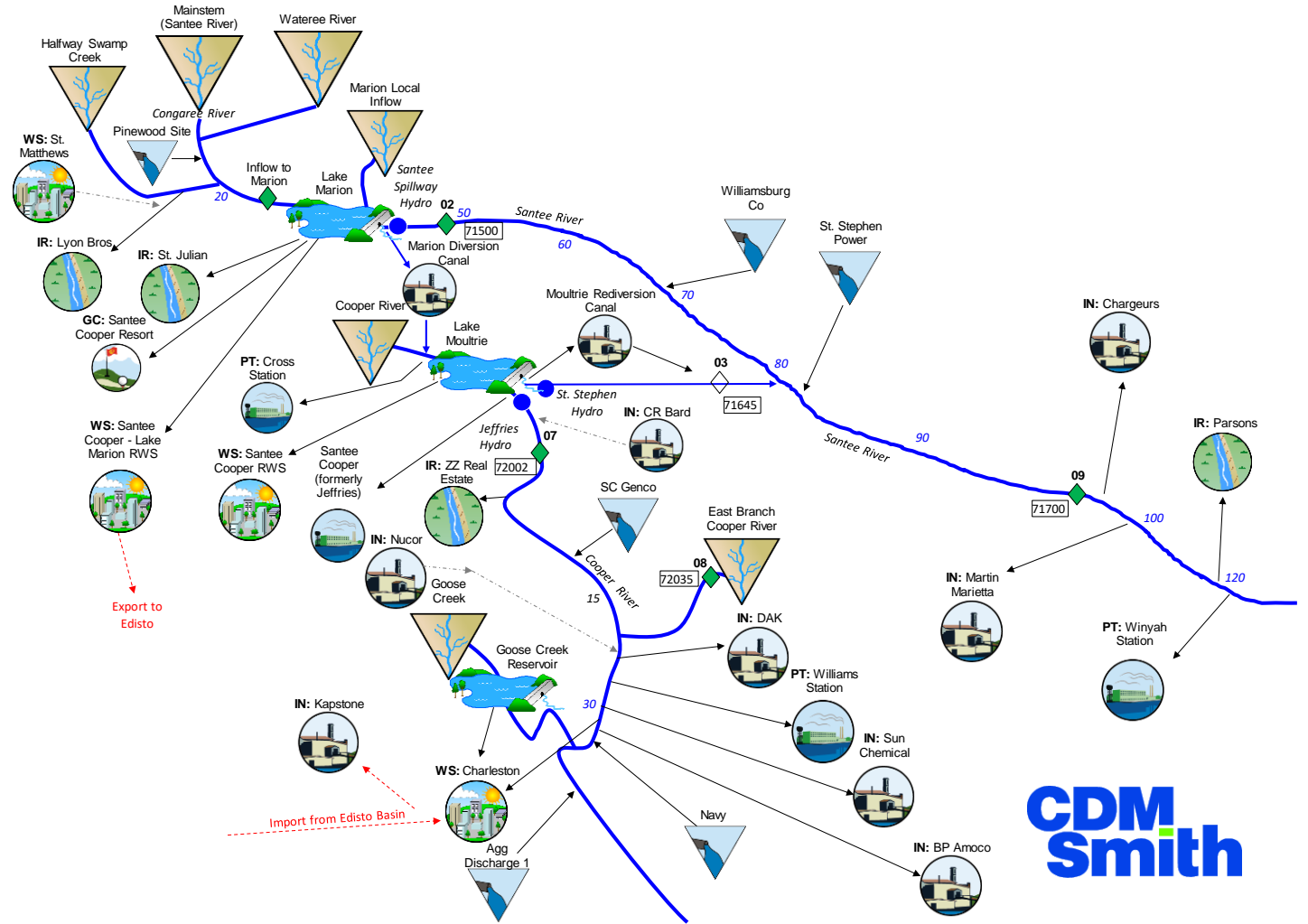
RBC Roles and Responsibilities

- Identify water shortages or conflicts using hydrologic models and available empirical data.
- Recommend strategies to mitigate or eliminate water use conflicts or water shortages.
- Communicate with stakeholders and the public on water planning activities.
- Coordinate with other formal water planning bodies.
- Recommend changes to water policy or legislation or to the water planning process.
- Help draft River Basin Plans.
- Update River Basin Plans every 5 years and amend the plans as needed.

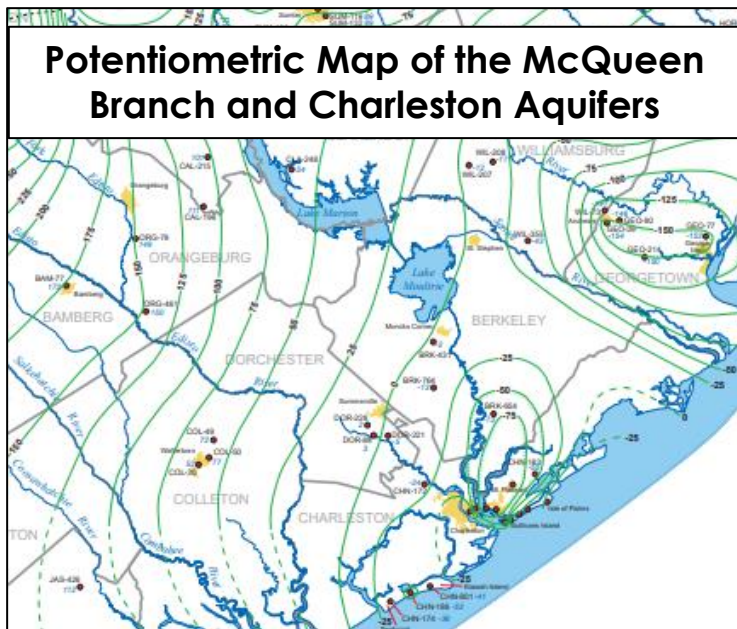
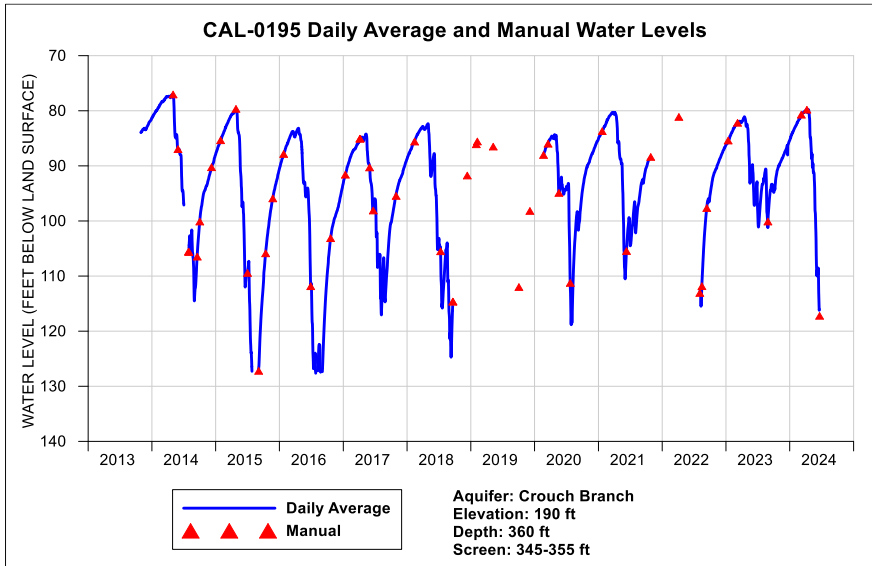


Surface Water Allocation Model (SWAM)

Model is a decision-making tool used to assess water availability and management strategies, and will support the development of the River Basin Plan



Santee Groundwater Assessment



- Assessment will include a review of:
 - Groundwater level data from SCDES and USGS monitoring networks.
 - SCDES potentiometric maps
 - Groundwater withdrawal data
 - Project groundwater use over the Planning Horizon
 - Groundwater Management Plans completed under SCDES's Capacity Use program.
- Later iterations of basin planning will incorporate groundwater modeling
 - Development of model (USGS) is in progress but will not be available for the first Santee River Basin Plan.
 - Model will be a future decision-making tool used to assess groundwater availability.

Water Demand Projections

- Water-demand methodology report released in October 2019 and available at:
 - <https://des.sc.gov/programs/bureau-water/hydrology/water-planning/water-demand-projections>.
- Projections of future water withdrawals will be used to assess future water availability:
 - Surface Water Projections will be incorporated into the SWAM model.
 - Groundwater projections will be available to help inform groundwater management recommendations.
- RBC will have opportunity to review and provide feedback on the basin's water-demand projections.



US Army Corps
of Engineers



SC DEPARTMENT of
ENVIRONMENTAL
SERVICES

CLEMSON
UNIVERSITY

RBC Support

- **Contractors** (solicited and hired by SCDES):
 - Meeting Facilitation (CDM Smith)
 - Meeting Coordination (Clemson University) – administrative and logistical support
 - Surface Water Modeling Technical support (CDM Smith)
 - Public Outreach (Clemson University)
 - River Basin Plan report writing (CDM Smith)
- **Other State and Federal Agencies:**
 - RBCs can request agencies to serve as Advisors.
 - Participate in RBC meetings and subcommittee meetings as requested.
- **RBCs can request input from other outside Advisors.**

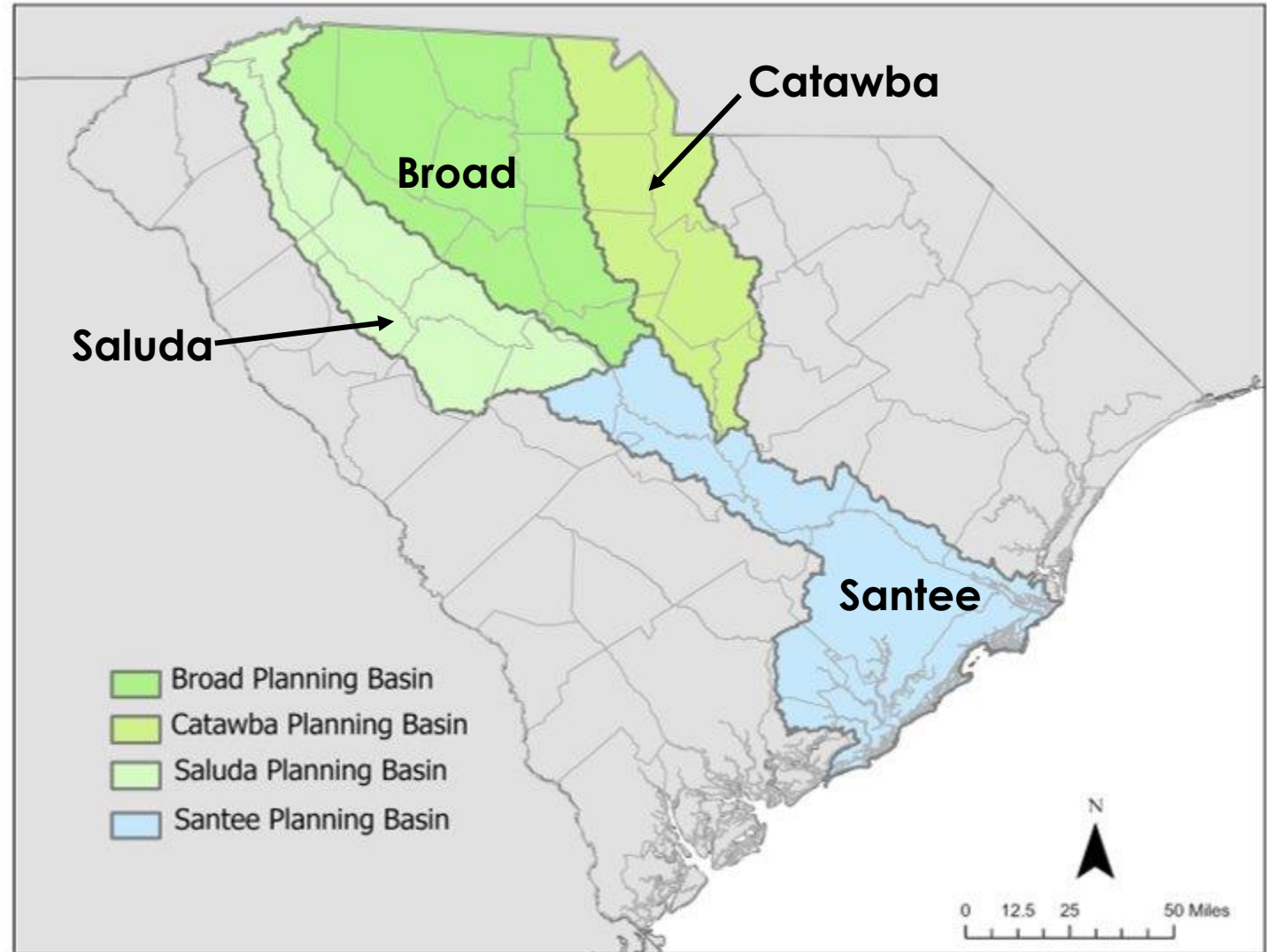
***SCDES will provide oversight
of the river basin planning process.***

Coordination with other Planning Bodies

- Planning Framework recognizes the existence of other formal water planning groups and drought management groups.
- Planning Framework emphasizes coordination with such groups and provides general guidelines.
- Inter-basin River Councils (IRCs):
 - Made up of RBC members from two or more basins.
 - A forum for adjoining basins to communicate and coordinate on mutual interests and to resolve conflicts.

Coordination with other Planning Basins

- An IRC will be formed between the Santee planning basin and the Broad, Catawba, and Saluda planning basins.
- IRC will meet quarterly to coordinate planning activities.



Santee River Basin Planning Public Meeting #2

- 1. Welcome and Opening Remarks** – Dr. Jeff Allen, Clemson University and Joe Koon, Director of Water Resources, S.C. Department of Environmental Services
- 2. Why We Are Here** – Scott Harder, Hydrology Section Manager, S.C. Department of Environmental Services
Why is water planning important to all South Carolina citizens?
Where are we in the planning process, how did we get here, and where are we going?
- 3. Santee River Basin Planning** – Brooke Czwartacki, Hydrology Section, S.C. Department of Environmental Services
What is a River Basin Plan and how will the River Basin Plan be developed?
- 4. Next Steps for Santee River Basin Planning – Scott Harder, Hydrology Section Manager, S.C. Department of Environmental Services**
What are the next steps for Santee River Basin Planning?
How can stakeholders apply to be on the Santee River Basin Council?
What are other ways stakeholders can be involved?
- 5. Lower Savannah-Salkehatchie River Basin Planning** – Ken Caldwell, Chair of the Lower Savannah-Salkehatchie River Basin Council, Alliant Insurance Services
The Lower Savannah-Salkehatchie River Basin Council Vice Chair will share his perspective on State water planning and his experience with the Lower Savannah-Salkehatchie basin planning process.
- 6. Comments from the Planning Process Advisory Committee and Q&A Session** – moderated by Dr. Jeff Allen, Clemson University.
Former PPAC members will share their perspectives on water planning and along with SCDES address any comments or questions about the Planning Framework and river basin planning activities.
Let us hear from you. We welcome your questions and feedback.

River Basin Planning Schedule



RBC Membership Qualifications and Considerations

- SCDES appointments based on the following criteria:
 - Applicant's credentials
 - Knowledgeable and experienced in their interest category.
 - Must either reside, work or officially represent an entity having a significant water resource interest in the basin.
 - Additional qualifiers – membership on the State Drought Response Committee, for example.
 - Recommendations and endorsements submitted by various interest groups or organizations.
 - Geographic diversity.

SCDES will strive for a balanced RBC representation!


Membership Terms and Commitment Considerations

- Initial terms are 2, 3 or 4 years.
- Subsequent terms of 3 years (each additional term subject to SCDES approval).
- RBC members can serve up to 3 consecutive terms.
- Considerations for RBC applicants:
 - Multi-year commitment.
 - Monthly in-person meetings (held during normal business hours).
 - Subcommittee meetings.
 - Review of various technical reports and other documents.
 - Help write and review the River Basin Plan.
 - Annual meetings between iterations of the River Basin Plan (possibly higher frequency).

Santee River Basin Council Application Process

Applicants should carefully consider the time commitment and workload required to an RBC member.

SANTEE RIVER BASIN COUNCIL
MEMBERSHIP APPLICATION FORM



SC DEPARTMENT OF
ENVIRONMENTAL SERVICES

Last Name: _____ First Name: _____
Address: _____ Phone 1: _____
_____ Phone 2: _____
City: _____ State: _____ ZIP: _____
Organization/Company: _____
Position: _____ E-mail: _____

Indicate which one Interest Category you are requesting to represent (required):

<input type="radio"/> Agriculture, Forestry, and Irrigation Interests	<input type="radio"/> Industry and Economic Development Interests
<input type="radio"/> Local Governments	<input type="radio"/> Water-based Recreation Interests
<input type="radio"/> Water and Sewer Utilities	<input type="radio"/> Environmental Interests
<input type="radio"/> Electric-Power Utilities and Non-Federal Reservoir Operators	<input type="radio"/> At-Large Water-based Interests

1. How are you affiliated with this Interest Category?

2. Explain what makes you an appropriate representative of your selected Interest Category:

3. Describe your relevant qualifications and background or experience with water resources:

4. Explain how you would apply your skills and experience to assure successful water planning for the Santee River Basin:

The completed application and any supporting documentation (such as a resume) should be submitted to Scott Harder of the SCDES Bureau of Water. Applications may be e-mailed to Mr. Harder at Scott.Harder@des.sc.gov or mailed to SCDES at the following address:

Scott Harder
Bureau of Water - Hydrology Program
SCDES
220 McGee Road
Anderson, SC 29625

<https://des.sc.gov/programs/bureau-water/hydrology/water-planning/river-basin-planning/santee-basin-planning>

RBC Application Process

- Application period: **October 7th – October 25th, 2024.**
- Application forms available on SCDES website:

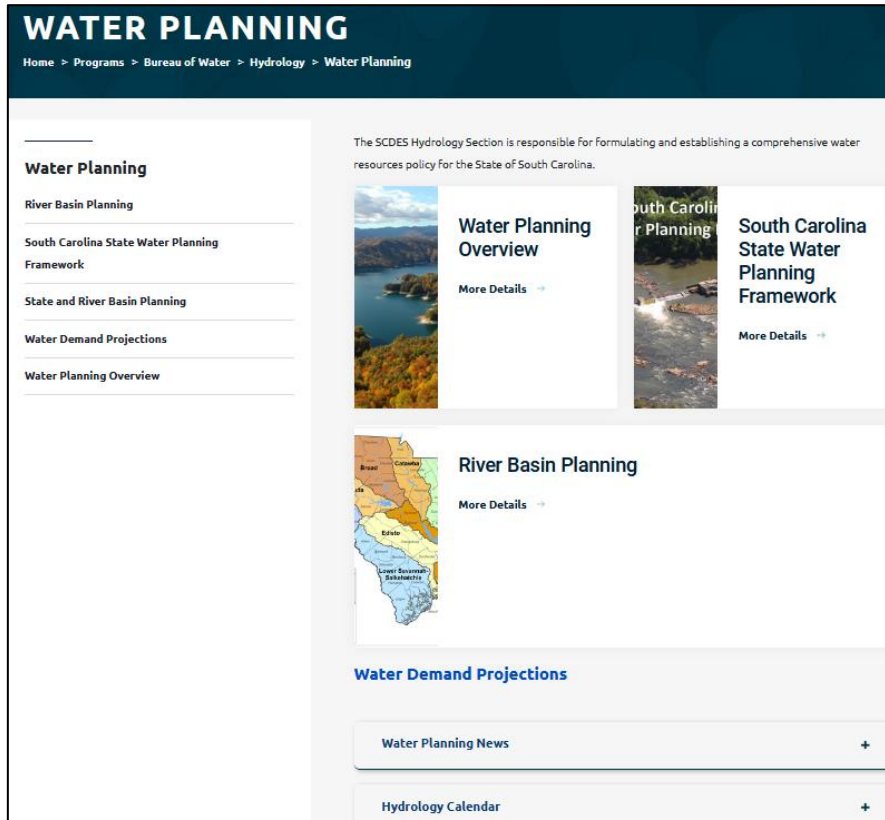
<https://des.sc.gov/programs/bureau-water/hydrology/water-planning/river-basin-planning/santee-basin-planning>.

- Application forms and recommendations should be sent to **Scott Harder** (see application for contact information).
- Final selection and notification by **November 15th, 2024.**
- Applicants not appointed for membership may be placed on a waiting list.

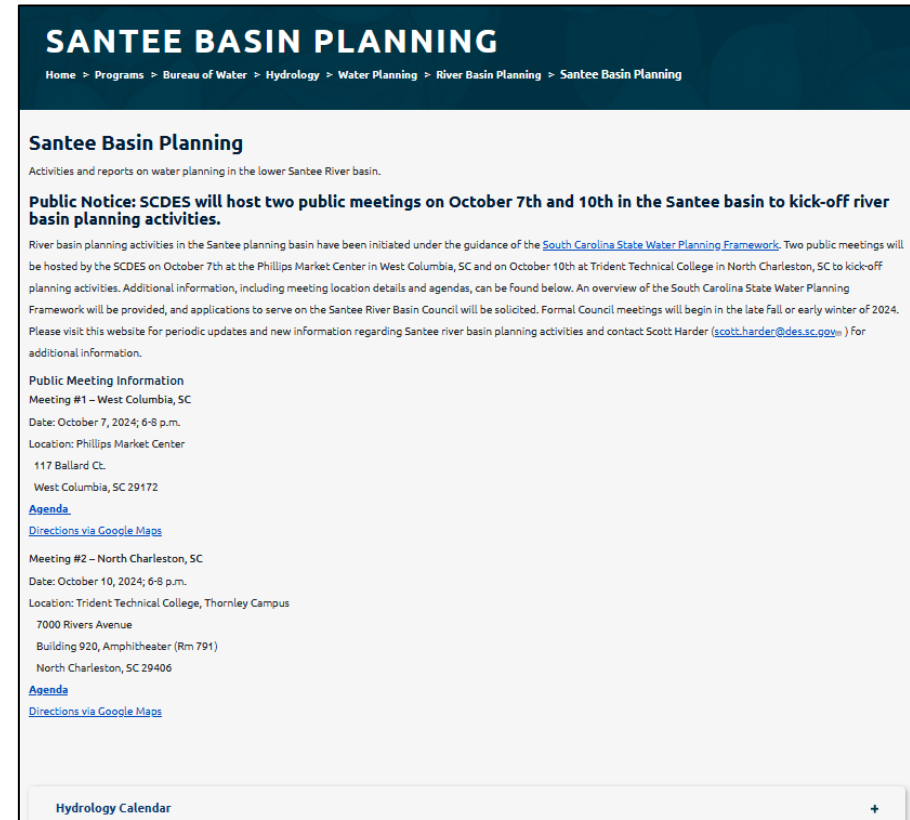
Stakeholder/Public Participation Guidelines

- Guidelines for stakeholder and public participation described in Section 3.7 of Planning Framework.
- Public meetings (3 to 4 per basin):
 - Prior to first RBC meeting – “kickoff” meeting(s).
 - After *draft* River Basin Plan is released.
 - After *final* River Basin Plan is released.
- Draft River Basin Plan public review period (30 days).
- RBC meetings:
 - Open to the public.
 - Each meeting will include public comment period.

SCDES Hydrology Website



<https://des.sc.gov/programs/bureau-water/hydrology/water-planning>



<https://des.sc.gov/programs/bureau-water/hydrology/water-planning/river-basin-planning/santee-basin-planning>

Site will host:

- Announcements/Calendar of Events
- Access to water planning documents – Planning Framework, technical reports
- RBC meeting materials – agendas, presentations, recordings

Santee River Basin Planning Public Meeting #2

- 1. Welcome and Opening Remarks** – Dr. Jeff Allen, Clemson University and Joe Koon, Director of Water Resources, S.C. Department of Environmental Services
- 2. Why We Are Here** – Scott Harder, Hydrology Section Manager, S.C. Department of Environmental Services
 - Why is water planning important to all South Carolina citizens?*
 - Where are we in the planning process, how did we get here, and where are we going?*
- 3. Santee River Basin Planning** – Brooke Czwartacki, Hydrology Section, S.C. Department of Environmental Services
 - What is a River Basin Plan and how will the River Basin Plan be developed?*
- 4. Next Steps for Santee River Basin Planning** – Scott Harder, Hydrology Section Manager, S.C. Department of Environmental Services
 - What are the next steps for Santee River Basin Planning?*
 - How can stakeholders apply to be on the Santee River Basin Council?*
 - What are other ways stakeholders can be involved?*
- 5. Lower Savannah-Salkehatchie River Basin Planning** – Ken Caldwell, Chair of the Lower Savannah-Salkehatchie River Basin Council, Alliant Insurance Services
 - The Lower Savannah-Salkehatchie River Basin Council Vice Chair will share his perspective on State water planning and his experience with the Lower Savannah-Salkehatchie basin planning process.***
- 6. Comments from the Planning Process Advisory Committee and Q&A Session** – moderated by Dr. Jeff Allen, Clemson University.
 - Former PPAC members will share their perspectives on water planning and along with SCDES address any comments or questions about the Planning Framework and river basin planning activities.*
 - Let us hear from you. We welcome your questions and feedback.*

Santee River Basin Planning Public Meeting #2

- 1. Welcome and Opening Remarks** – Dr. Jeff Allen, Clemson University and Joe Koon, Director of Water Resources, S.C. Department of Environmental Services
- 2. Why We Are Here** – Scott Harder, Hydrology Section Manager, S.C. Department of Environmental Services
 - Why is water planning important to all South Carolina citizens?*
 - Where are we in the planning process, how did we get here, and where are we going?*
- 3. Santee River Basin Planning** – Brooke Czwartacki, Hydrology Section, S.C. Department of Environmental Services
 - What is a River Basin Plan and how will the River Basin Plan be developed?*
- 4. Next Steps for Santee River Basin Planning** – Scott Harder, Hydrology Section Manager, S.C. Department of Environmental Services
 - What are the next steps for Santee River Basin Planning?*
 - How can stakeholders apply to be on the Santee River Basin Council?*
 - What are other ways stakeholders can be involved?*
- 5. Lower Savannah-Salkehatchie River Basin Planning** – Ken Caldwell, Chair of the Lower Savannah-Salkehatchie River Basin Council, Alliant Insurance Services
 - The Lower Savannah-Salkehatchie River Basin Council Vice Chair will share his perspective on State water planning and his experience with the Lower Savannah-Salkehatchie basin planning process.*
- 6. Comments from the former Planning Process Advisory Committee and Q&A Session – moderated by Dr. Jeff Allen, Clemson University.**
 - Former PPAC members will share their perspectives on water planning and along with SCDES address any comments or questions about the Planning Framework and river basin planning activities.***
 - Let us hear from you. We welcome your questions and feedback.***