



## Barnwell Class 2 Construction and Demolition Landfill

Chad Abell, Vice President of EHS & Engineering

Chris Fisher, Municipal Director South Carolina

[barnwell@coastalwasteinc.com](mailto:barnwell@coastalwasteinc.com)



Overall Peak H <sub>2</sub> S Concentrations Based On Dates				
Week	Date of Peak Reading (Community)	Peak H <sub>2</sub> S Level (ppb) (Community)	Peak H <sub>2</sub> S Level (ppm) (Community)	Total Number of Complaints
Nov. 12 - 18, 2025	11/15/25	26	0.026	38
Nov. 19 - 25, 2025	11/19/25	43	0.043	29
Nov. 26 - Dec. 2, 2025	12/1/25	17	0.017	12
Dec. 3 - 9, 2025	12/10/25	31	0.031	38
Dec. 10 - 16, 2025	12/10/25	170	0.170	135
Dec. 17 - 23, 2025	12/18/25	65	0.065	110
Dec. 24 - 30, 2025	12/25/25	7	0.007	19
Dec. 31 - Jan. 6, 2026	1/6/26	28	0.028	44

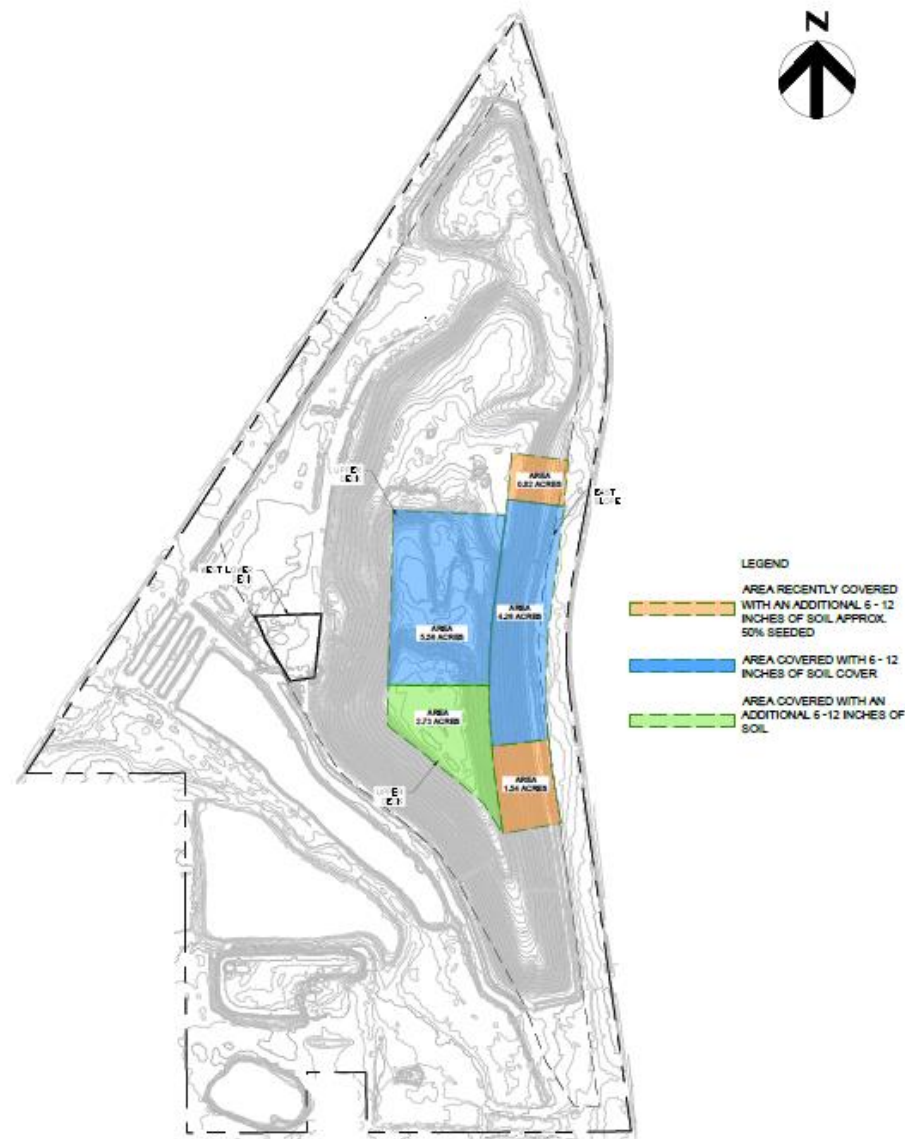
- Information recorded by South Carolina Department of Environmental Services (SCDES) in support of ongoing investigation into odor complaints from the Telfair community
- Total number of complaints is reported for the date of peak H<sub>2</sub>S level
- Information available at

**Telfair Community | South Carolina Department of Environmental Services**



ACTIVITY	AREA	DUE DATE	STATUS
<b>Weekly Landfill Erosion Inspection</b>			
	Upper Deck	Weekly	Ongoing
	Lower Deck	Weekly	Ongoing
<b>Addition of Cover Soil</b>			
Add 6 - 12-in thick layer of soil (Total of 2-ft thick layer)	Upper Deck	15-Dec-25	Complete
<b>Grading</b>			
Add soil for grading 1% slope	Upper Deck	15-Dec-25	Complete
Add soil for grading 1% slope	West Lower Deck	15-Dec-25	Complete
<b>Relocation of Active Waste Area</b>			
Move active waste disposal area	Upper Deck	15-Dec-25	Complete
Interim Cover (minimum 1 ft thick)	Lower Deck	31-Dec-25	Complete
<b>Establish Vegetation</b>			
Seeding	Eastern slope	1-Mar-26	50% Complete
Seeding	Lower Deck	1-Mar-26	0% Complete
Seeding	Upper Deck	1-Mar-26	0% Complete
<b>Downchutes</b>			
Final Plan		1-Feb-26	Initiated

Note: the 1% grade in newly filled areas is completed as we cover.





## Fill Sequence

- Top Deck Placement of Construction and Demolition Debris ~15'
- Cover 1' of recently placed waste
- Final "Lift" of waste placement Top Deck

## Gas Monitoring & Assessment

- Continue Passive Monitoring
- Landfill Gass Monitoring Probe
  - ~6' deep
  - Perforated Pipe
- Monitoring
  - Primary – Carbon Dioxide, Methane
  - Secondary – Oxygen, Hydrogen Sulfide & "Balance Gas"
  - Evaluate Quality & Quantity
- Results used to determine options for most effective controls