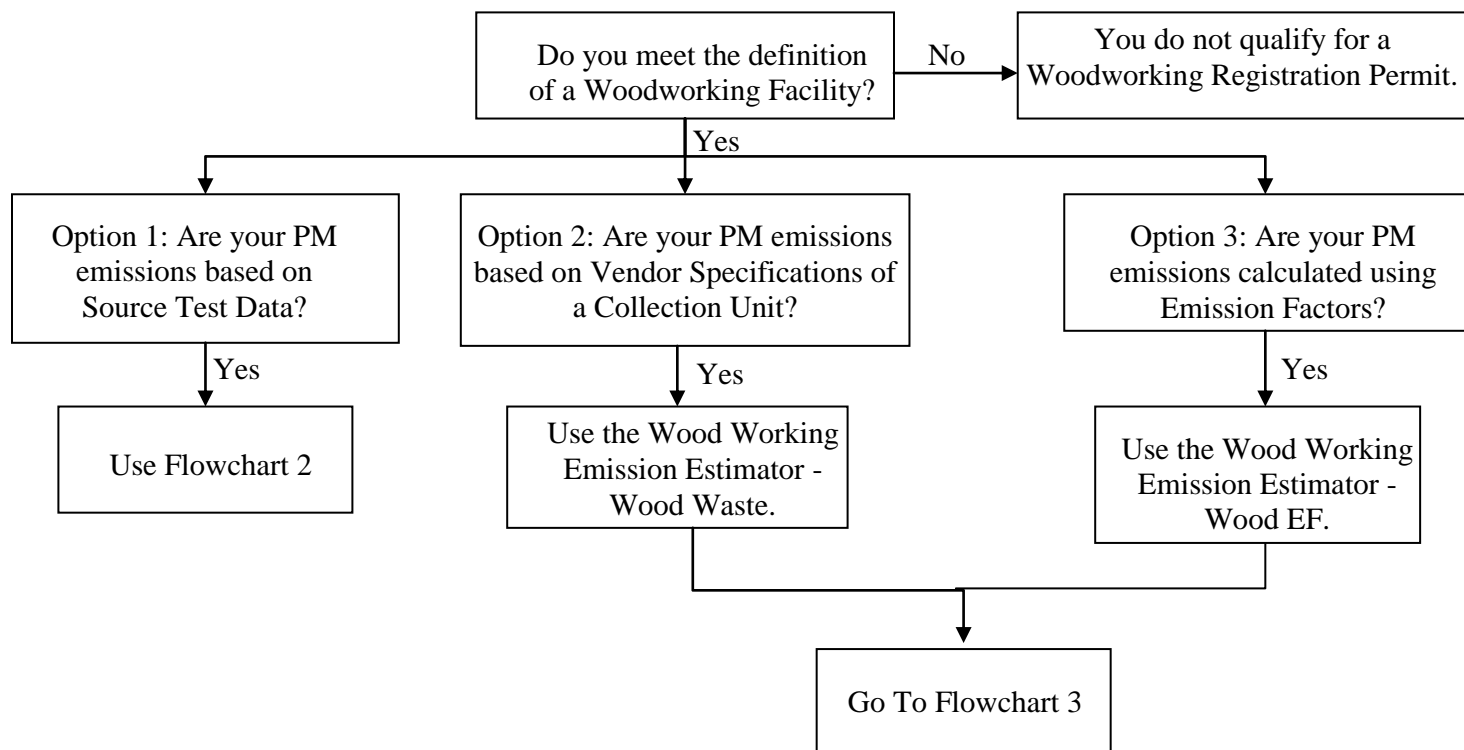


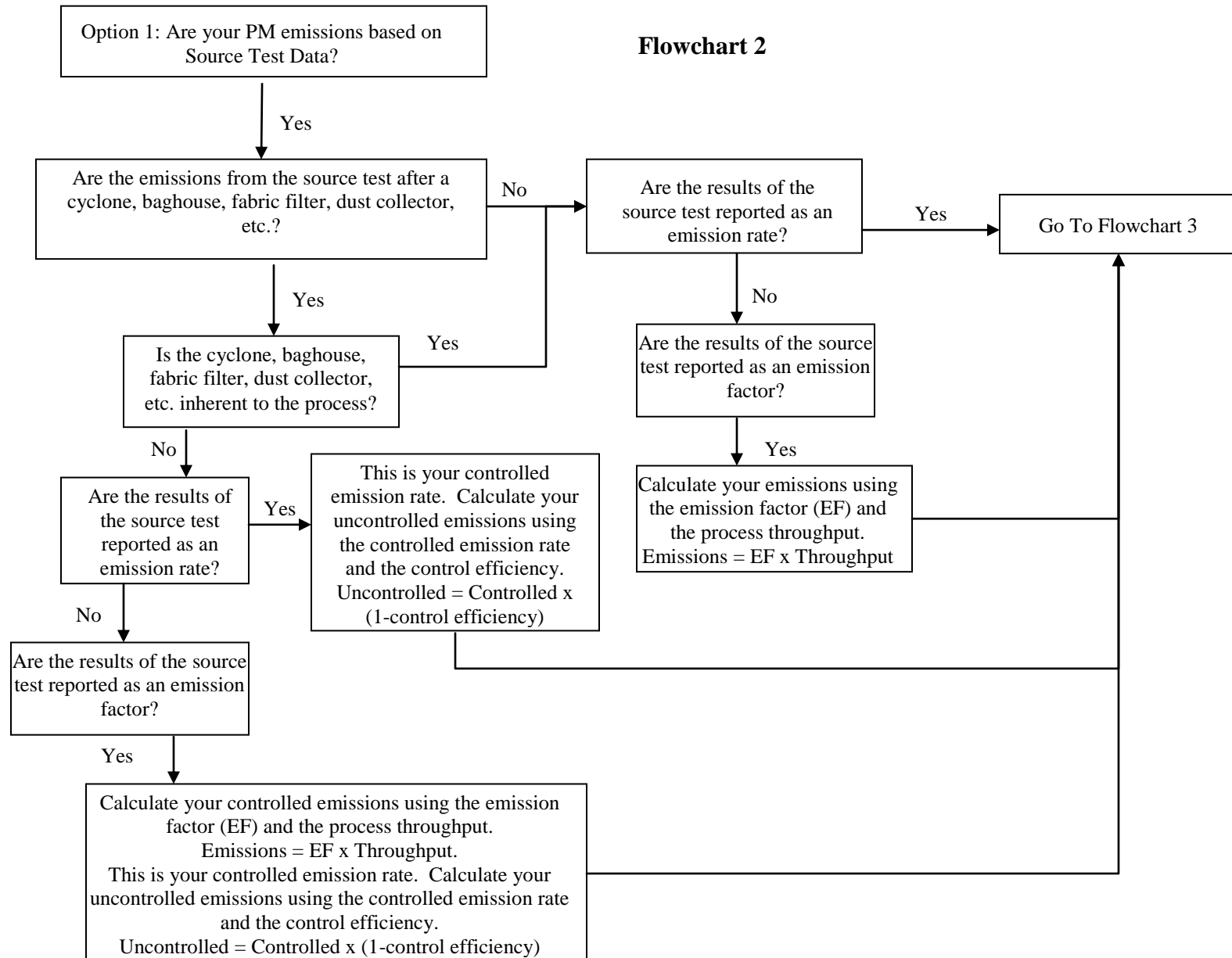
Bureau of Air Quality
Registration Permit Application Flowcharts
Wood Working Operations
Page 1 of 3

Flowchart 1



Woodworking operation means any operation involving the generation of small wood waste particles (shavings, sanderdust, sawdust, etc.) by any kind of mechanical manipulation of wood or wood byproducts. Includes, but is not limited to, sawing, planing, chipping, shaping, moulding, hogging, lathing and sanding and all applicable control devices such as baghouses, cyclones, and portable dust collectors or any internal combustion engines that may be used to power the woodworking equipment. Additionally, it covers any woodworking waste transfer or collection units such as silos, cyclones, trailers, conveyors, etc. Some woodworking facilities also conduct surface finishing. This permit also covers the surface finishing of woods and all applicable finishing materials, control devices such as paint booth filters, cartridges, etc, and dryers, burn-off and curing ovens that may be used during the drying process. Sources that conduct onsite lumber or chip drying prior to machining can not be permitted under this registration permit.

Bureau of Air Quality
Registration Permit Application Flowcharts
Wood Working Operations
Page 2 of 3



**Bureau of Air Quality
 Registration Permit Application Flowcharts
 Wood Working Operations
 Page 3 of 3**

Flowchart 3

