



AVX Corporation Site

801 17th Ave South, Myrtle Beach, SC

January 22, 2008

PowerPoint Presentation before
Myrtle Beach City Council and
Horry County Council



History

- 1953 – AVX began operations
- Used chlorinated solvents until 1993
- 1981 - AVX began assessment and remediation
- June 1995 - AVX notice to DHEC
- 1996 DHEC Consent Order



Consent Agreement

- Obtain Applicable Permits/Approvals
 - February 1997 – Myrtle Beach acceptance of remediation groundwater
- Pay Civil Penalty
- Upgrade Existing Groundwater Cleanup System with Air Stripping
- Additional Investigation/Feasibility Study



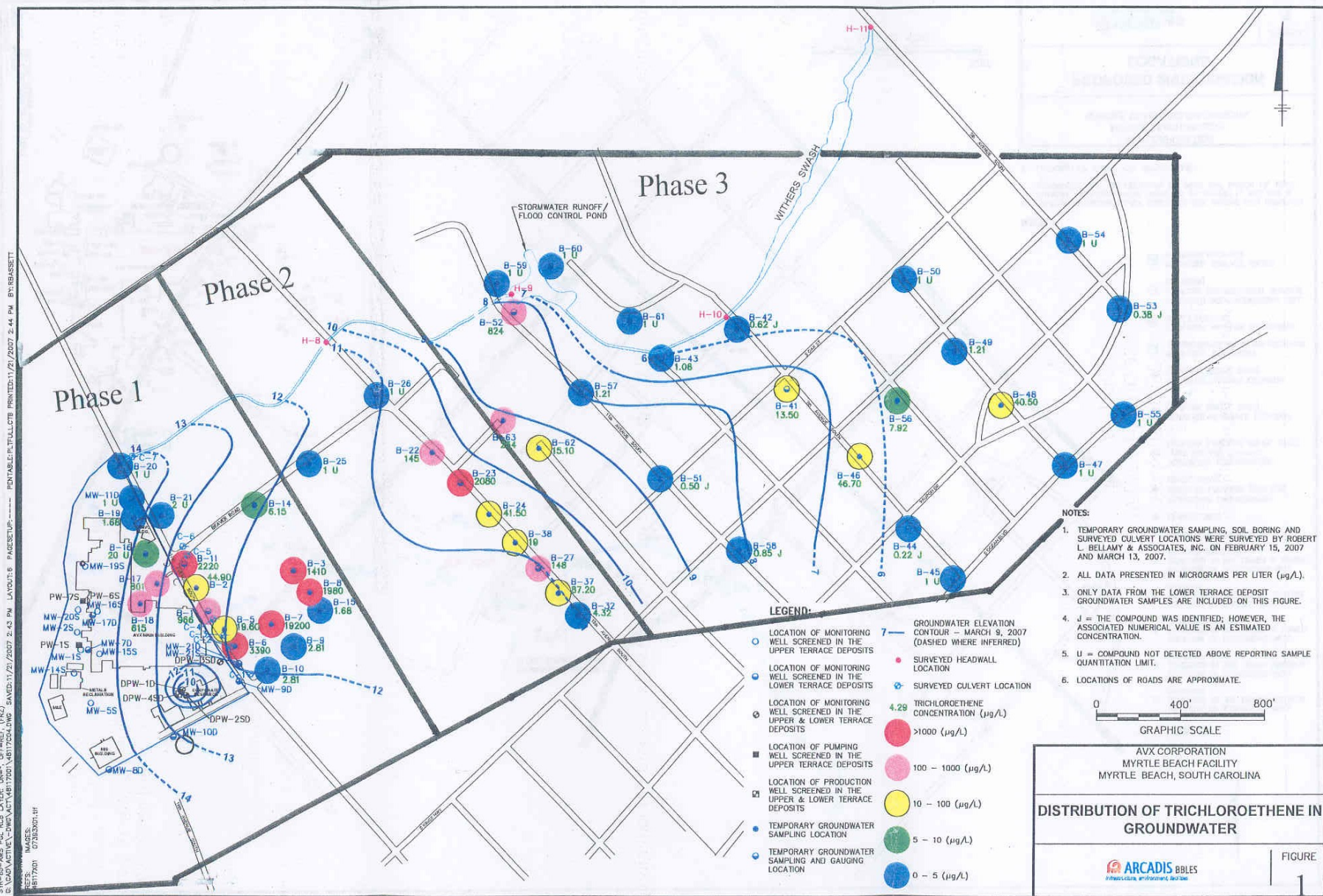
Recent Investigations

- July 2006 - Horry Land Company (HLC) Investigation
- August 2006 - VOC contamination in groundwater beneath the HLC property
- August 2006 - DHEC requires offsite investigation



AVX Off-Site Samples Phases I to III

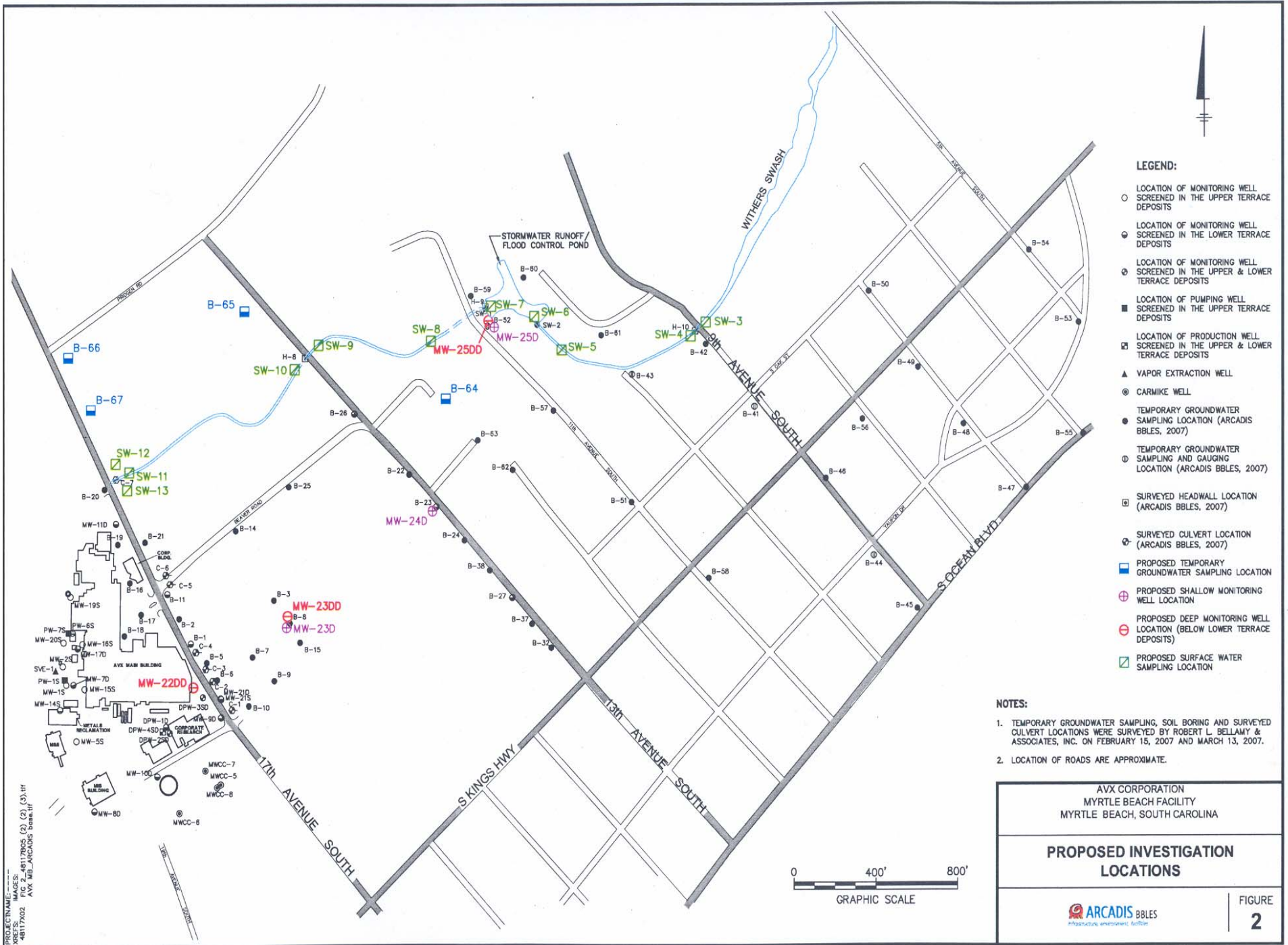
- January 2007 until March 2007 - Three Phases of off-site sampling
- May 2007 - Sampling Report
- May 2007 - DHEC and AVX met to discuss the findings and future activities





Off-Site Samples Phase IV

- October 2007 - DHEC approved Phase IV Work Plan
- November 2007 - Phase IV implemented



LEGEND:

- LOCATION OF MONITORING WELL SCREENED IN THE UPPER TERRACE DEPOSITS
- LOCATION OF MONITORING WELL SCREENED IN THE LOWER TERRACE DEPOSITS
- ⊙ LOCATION OF MONITORING WELL SCREENED IN THE UPPER & LOWER TERRACE DEPOSITS
- LOCATION OF PUMPING WELL SCREENED IN THE UPPER TERRACE DEPOSITS
- ⊠ LOCATION OF PRODUCTION WELL SCREENED IN THE UPPER & LOWER TERRACE DEPOSITS
- ▲ VAPOR EXTRACTION WELL
- ⊕ CARMIKE WELL
- TEMPORARY GROUNDWATER SAMPLING LOCATION (ARCADIS BBLES, 2007)
- ⊙ TEMPORARY GROUNDWATER SAMPLING AND GAUGING LOCATION (ARCADIS BBLES, 2007)
- ⊠ SURVEYED HEADWALL LOCATION (ARCADIS BBLES, 2007)
- ⊠ SURVEYED CULVERT LOCATION (ARCADIS BBLES, 2007)
- PROPOSED TEMPORARY GROUNDWATER SAMPLING LOCATION
- ⊕ PROPOSED SHALLOW MONITORING WELL LOCATION
- ⊖ PROPOSED DEEP MONITORING WELL LOCATION (BELOW LOWER TERRACE DEPOSITS)
- ⊠ PROPOSED SURFACE WATER SAMPLING LOCATION

NOTES:

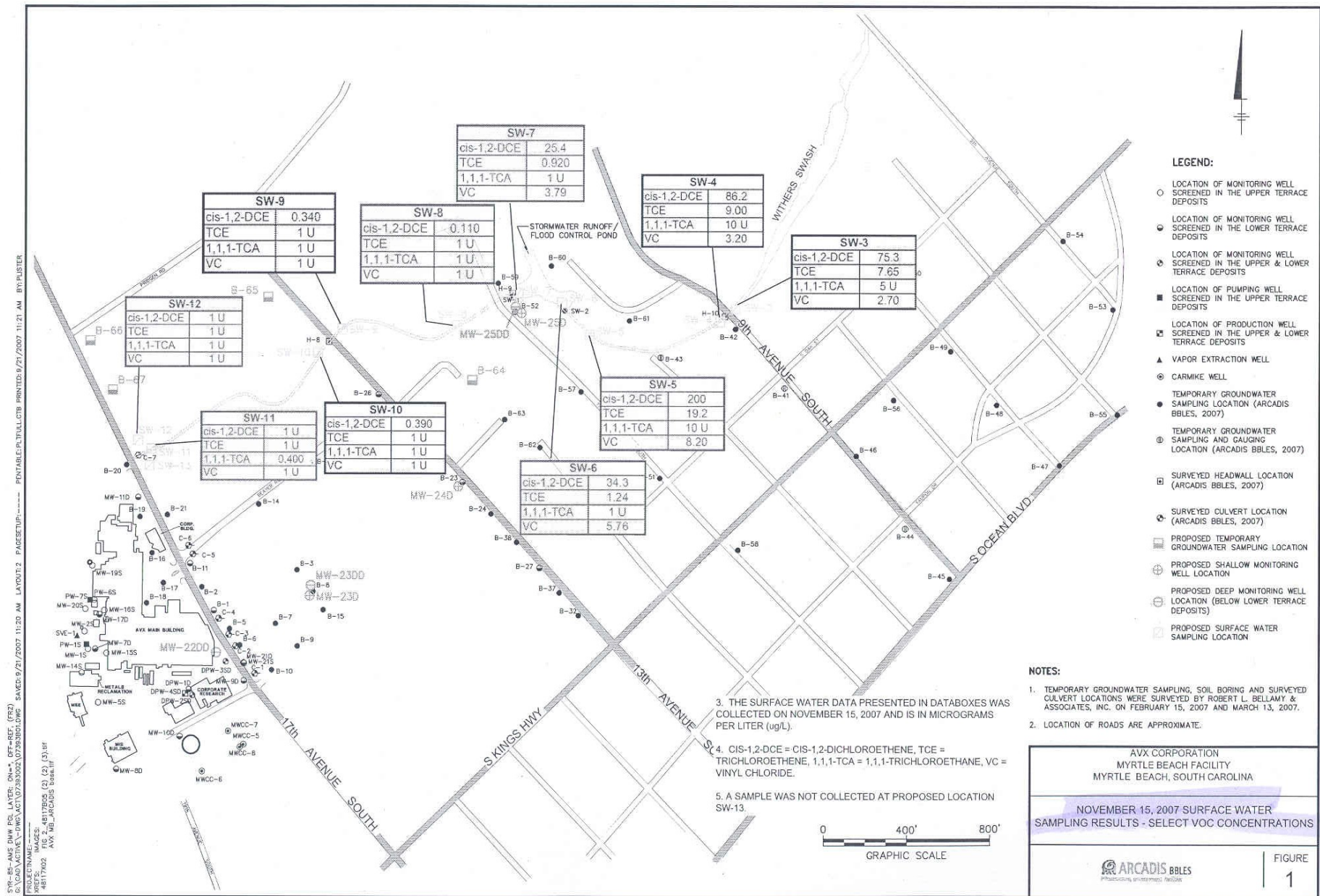
1. TEMPORARY GROUNDWATER SAMPLING, SOIL BORING AND SURVEYED CULVERT LOCATIONS WERE SURVEYED BY ROBERT L. BELLAMY & ASSOCIATES, INC. ON FEBRUARY 15, 2007 AND MARCH 13, 2007.
2. LOCATION OF ROADS ARE APPROXIMATE.

AVX CORPORATION
 MYRTLE BEACH FACILITY
 MYRTLE BEACH, SOUTH CAROLINA

PROPOSED INVESTIGATION LOCATIONS


FIGURE
2

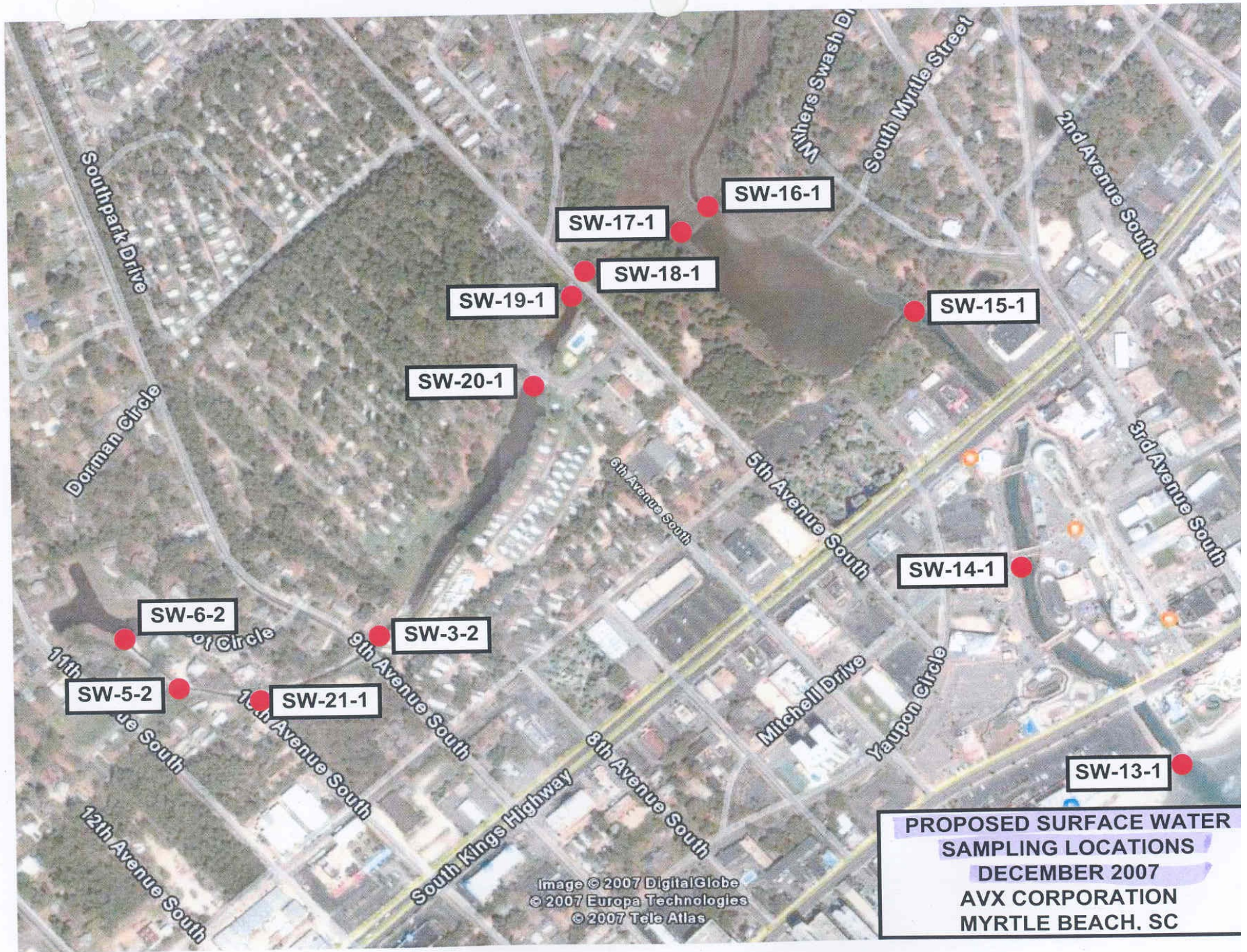
PROJECT NAME: AVX CORPORATION MYRTLE BEACH FACILITY
 FIG. NO.: 48117K02 (2) (2) (3) (1)
 DATE: 4/11/2007
 FILE: AVX_MB_ARCADIS_basemap.dwg



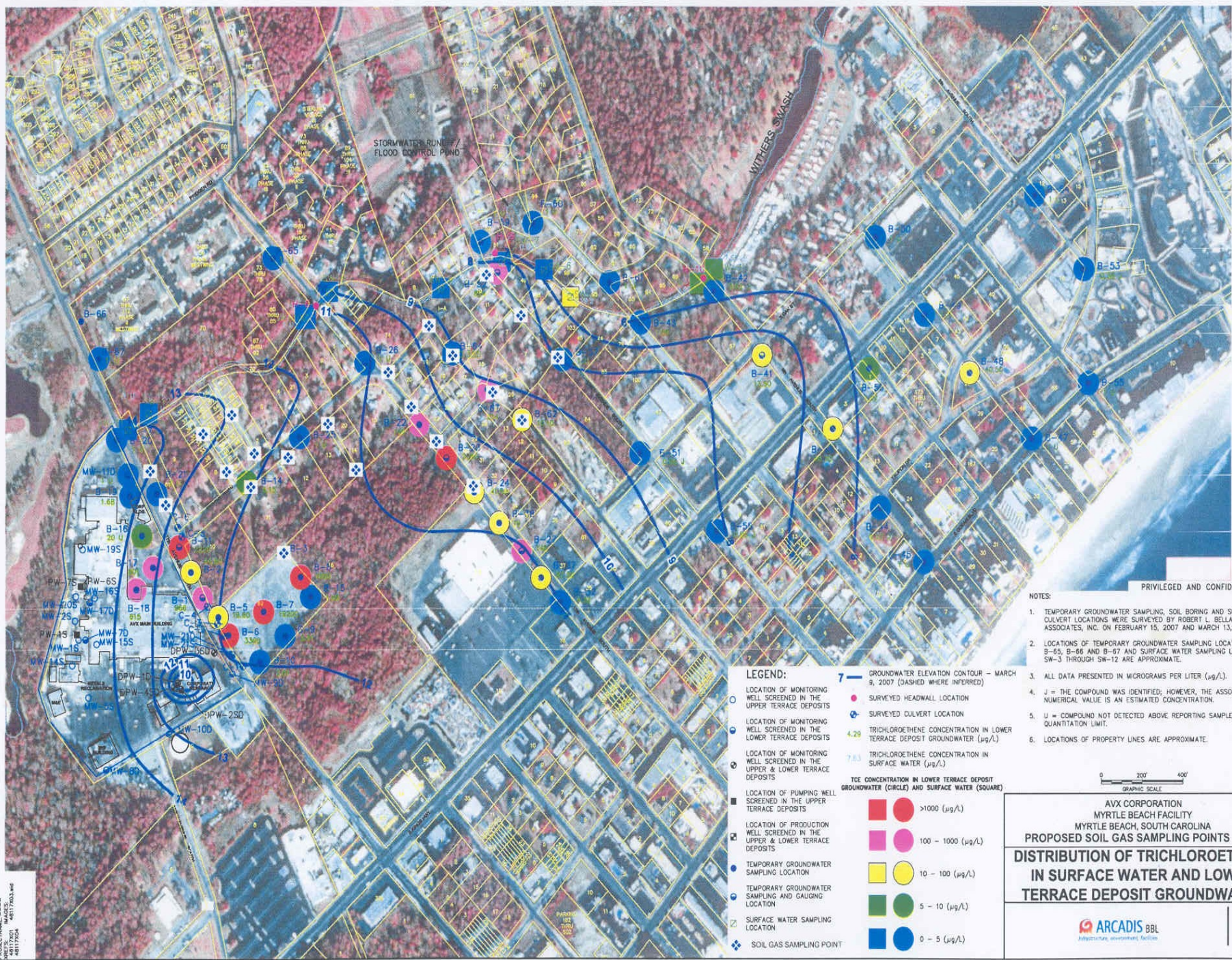


Off-Site Sampling Phase V

- December 2007 - AVX collected additional surface water and soil gas samples
- January 2008 - Soil gas and surface water results submitted to DHEC



PROJECT NAME: AVX CORPORATION MYRTLE BEACH FACILITY
 48117201 48117202 48117203 48117204
 48117205
 DATE: 12/10/2007 3:24 PM LAYOUT: 8 PAGESETUP: 1
 SAVES: 12/10/2007 3:24 PM PRINTED: 12/10/2007 3:24 PM BY: ADB/LLG



PRIVILEGED AND CONFIDENTIAL

- NOTES:
1. TEMPORARY GROUNDWATER SAMPLING, SOIL BORING AND SURVEYED CULVERT LOCATIONS WERE SURVEYED BY ROBERT L. BELLAMY & ASSOCIATES, INC. ON FEBRUARY 15, 2007 AND MARCH 13, 2007.
 2. LOCATIONS OF TEMPORARY GROUNDWATER SAMPLING LOCATIONS B-64, B-65, B-66 AND B-67 AND SURFACE WATER SAMPLING LOCATIONS SW-3 THROUGH SW-12 ARE APPROXIMATE.
 3. ALL DATA PRESENTED IN MICROGRAMS PER LITER ($\mu\text{g/L}$).
 4. J = THE COMPOUND WAS IDENTIFIED; HOWEVER, THE ASSOCIATED NUMERICAL VALUE IS AN ESTIMATED CONCENTRATION.
 5. U = COMPOUND NOT DETECTED ABOVE REPORTING SAMPLE QUANTIFICATION LIMIT.
 6. LOCATIONS OF PROPERTY LINES ARE APPROXIMATE.

LEGEND:

- 7 — GROUNDWATER ELEVATION CONTOUR — MARCH 9, 2007 (DASHED WHERE INFERRED)
 - LOCATION OF MONITORING WELL SCREENED IN THE UPPER TERRACE DEPOSITS
 - SURVEYED HEADWALL LOCATION
 - ⊕ SURVEYED CULVERT LOCATION
 - ⊖ LOCATION OF MONITORING WELL SCREENED IN THE LOWER TERRACE DEPOSITS
 - ⊙ LOCATION OF MONITORING WELL SCREENED IN THE UPPER & LOWER TERRACE DEPOSITS
 - ⊚ LOCATION OF PUMPING WELL SCREENED IN THE UPPER TERRACE DEPOSITS
 - ⊛ LOCATION OF PRODUCTION WELL SCREENED IN THE UPPER & LOWER TERRACE DEPOSITS
 - ⊜ TEMPORARY GROUNDWATER SAMPLING LOCATION
 - ⊝ TEMPORARY GROUNDWATER SAMPLING AND GAUGING LOCATION
 - ⊞ SURFACE WATER SAMPLING LOCATION
 - ⊟ SOIL GAS SAMPLING POINT
- TCE CONCENTRATION IN LOWER TERRACE DEPOSIT GROUNDWATER (CIRCLE) AND SURFACE WATER (SQUARE)**
- >1000 ($\mu\text{g/L}$)
 - 100 – 1000 ($\mu\text{g/L}$)
 - 10 – 100 ($\mu\text{g/L}$)
 - 5 – 10 ($\mu\text{g/L}$)
 - 0 – 5 ($\mu\text{g/L}$)

0 200 400
 GRAPHIC SCALE

**AVX CORPORATION
 MYRTLE BEACH FACILITY
 MYRTLE BEACH, SOUTH CAROLINA
 PROPOSED SOIL GAS SAMPLING POINTS AND
 DISTRIBUTION OF TRICHLOROETHENE
 IN SURFACE WATER AND LOWER
 TERRACE DEPOSIT GROUNDWATER**

FIGURE
1

DHEC SAMPLES

December 2007

- 11 residential irrigation wells located near the AVX facility
- Two (2) samples detected VOCs
- Four (4) ambient air samples in the neighborhoods around AVX
- None of the samples contained any site related VOCs

Next Steps

- AVX - Submit complete report of November/ December 2007 activities
- Fill data gaps
- AVX - Evaluate potential cleanup technologies for both the on-site and off-site groundwater contamination
- DHEC selection of cleanup plan



Next Steps

- Monitor progress of remediation efforts ensure the effectiveness of remedy
- Public involvement

