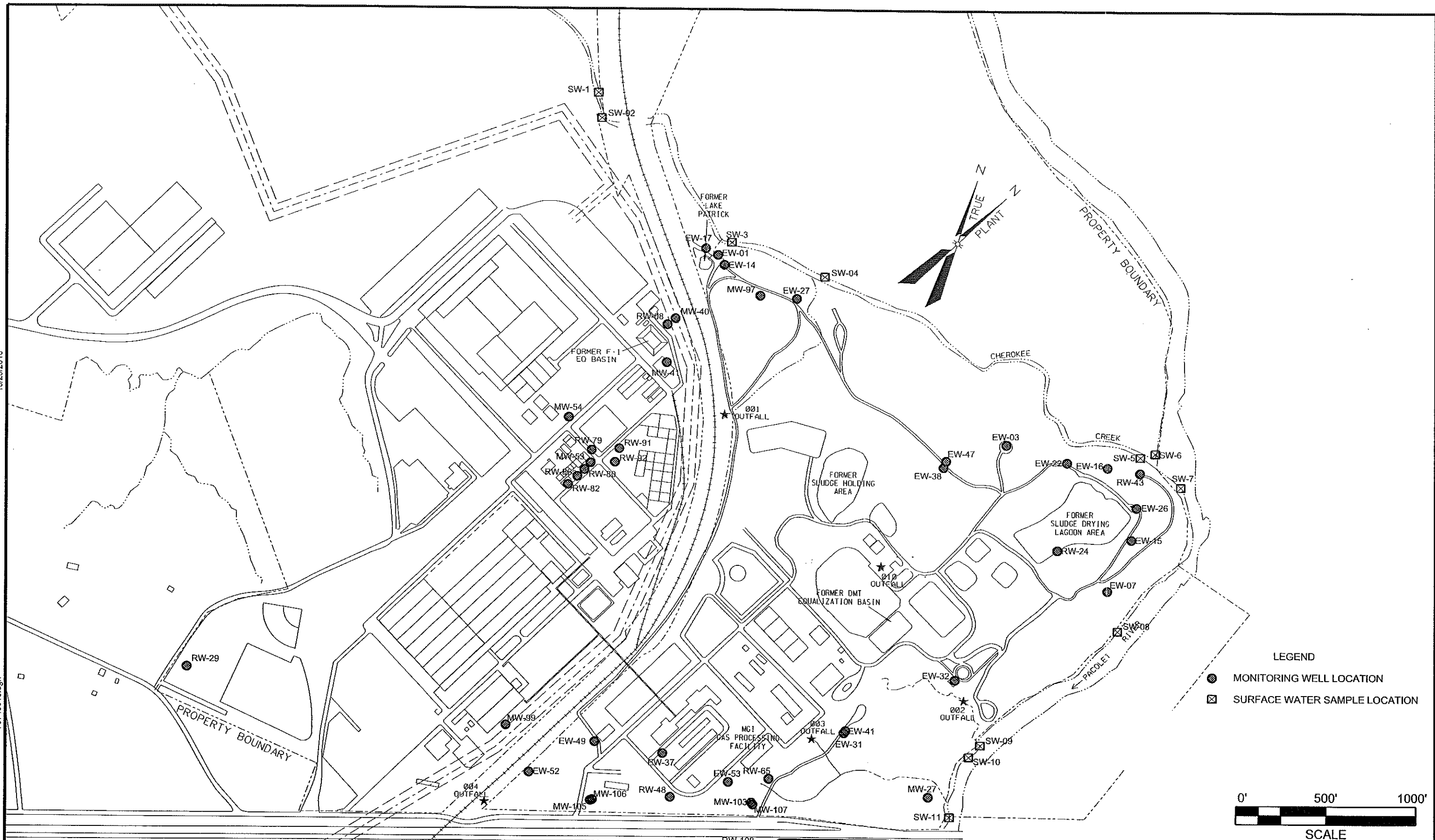


10/29/2010

79748018.dgn



AECOM

FIGURE 1
SAMPLING LOCATIONS

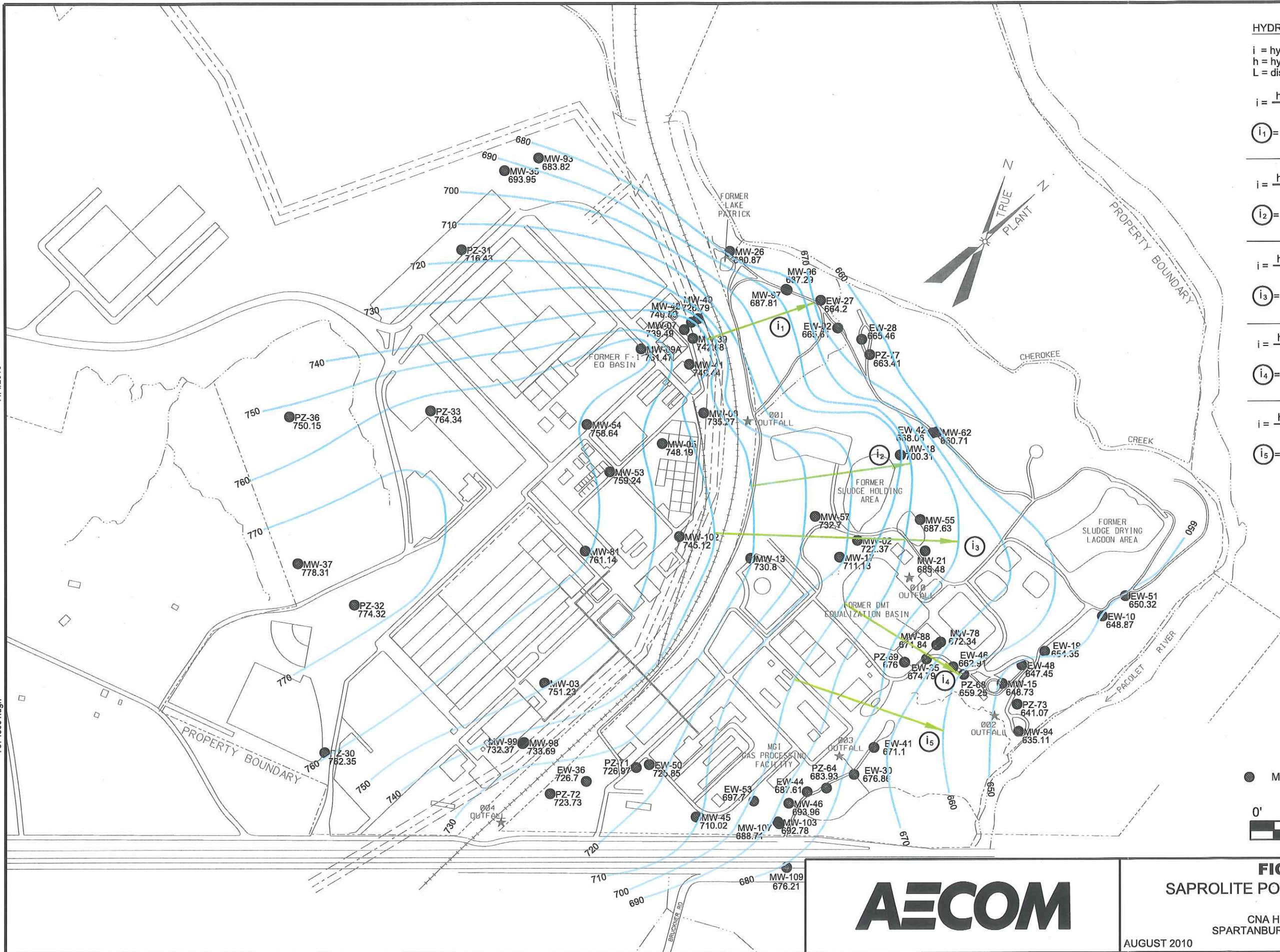
CNA HOLDINGS, INC.
SPARTANBURG, SOUTH CAROLINA

AUGUST 2010

60135440

11/4/2010

79748051.dgn



HYDRAULIC GRADIENT CALCULATIONS

i = hydraulic gradient
h = hydraulic head
L = distance between hydraulic heads

$$i = \frac{h_1 - h_2}{L} = \frac{740' - 670'}{610'}$$

$$i_1 = 0.114 \text{ ft/ft}$$

$$i = \frac{h_1 - h_2}{L} = \frac{730' - 690'}{870'}$$

$$i_2 = 0.046 \text{ ft/ft}$$

$$i = \frac{h_1 - h_2}{L} = \frac{740' - 650'}{1310'}$$

$$i_3 = 0.069 \text{ ft/ft}$$

$$i = \frac{h_1 - h_2}{L} = \frac{730' - 660'}{730'}$$

$$i_4 = 0.096 \text{ ft/ft}$$

$$i = \frac{h_1 - h_2}{L} = \frac{730' - 650'}{850'}$$

$$i_5 = 0.094 \text{ ft/ft}$$

LEGEND

● MONITORING WELL LOCATION

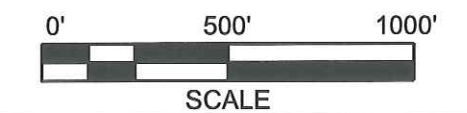


FIGURE 2
SAPROLITE POTENTIOMETRIC MAP

CNA HOLDINGS, INC.
SPARTANBURG, SOUTH CAROLINA

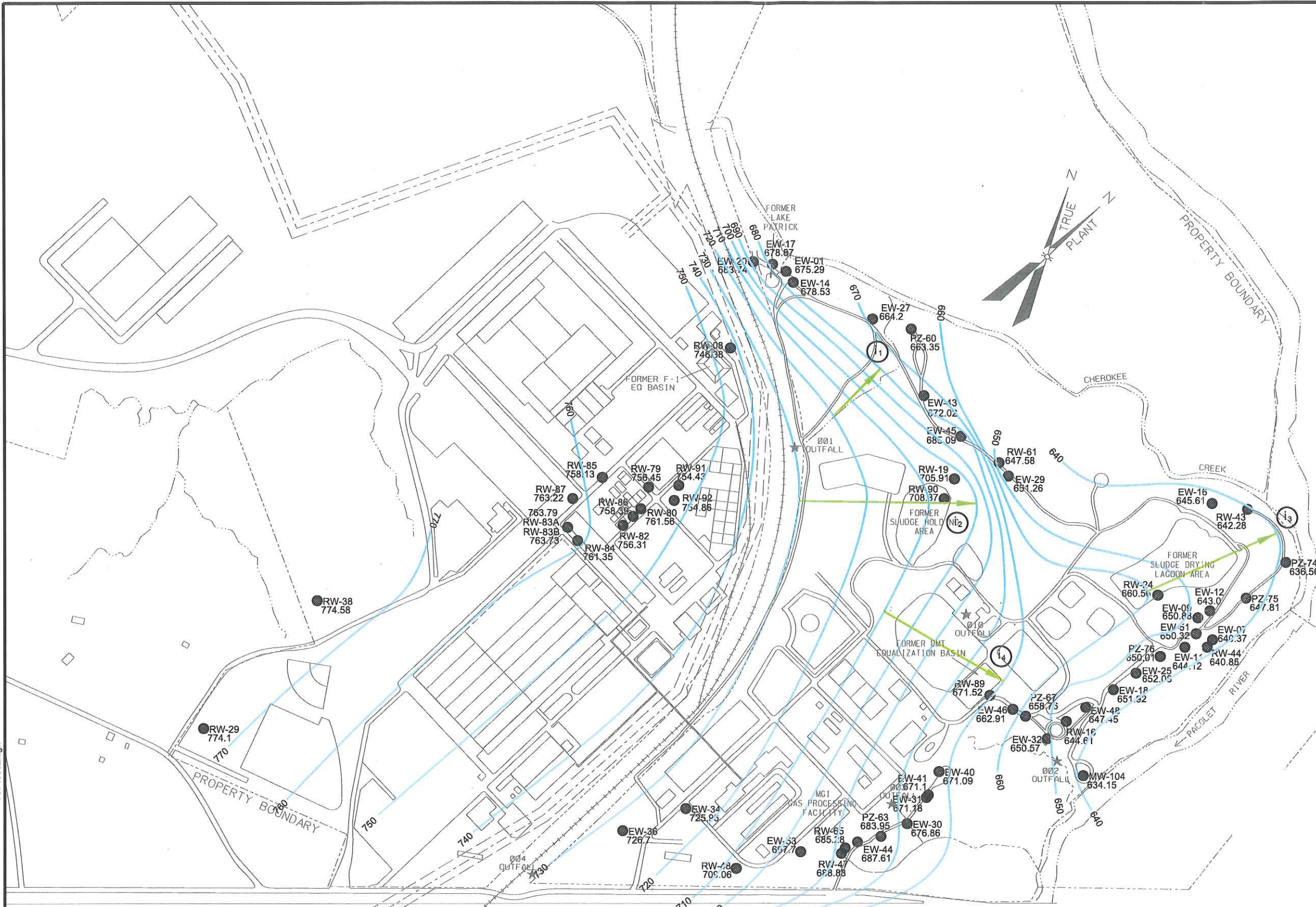
AUGUST 2010

60135440



11/4/2010

79748052.dgn



HYDRAULIC GRADIENT CALCULATION

i = hydraulic gradient
h = hydraulic head
L = distance between hydraulic heads

$$i = \frac{h_1 - h_2}{L} = \frac{720' - 680'}{340'}$$

$$i_1 = 0.118 \text{ ft/ft}$$

$$i = \frac{h_1 - h_2}{L} = \frac{730' - 700'}{900'}$$

$$i_2 = 0.033 \text{ ft/ft}$$

$$i = \frac{h_1 - h_2}{L} = \frac{660' - 640'}{720'}$$

$$i_3 = 0.028 \text{ ft/ft}$$

$$i = \frac{h_1 - h_2}{L} = \frac{710' - 670'}{700'}$$

$$i_4 = 0.057 \text{ ft/ft}$$

LEGEND

- MONITORING WELL LOCATION

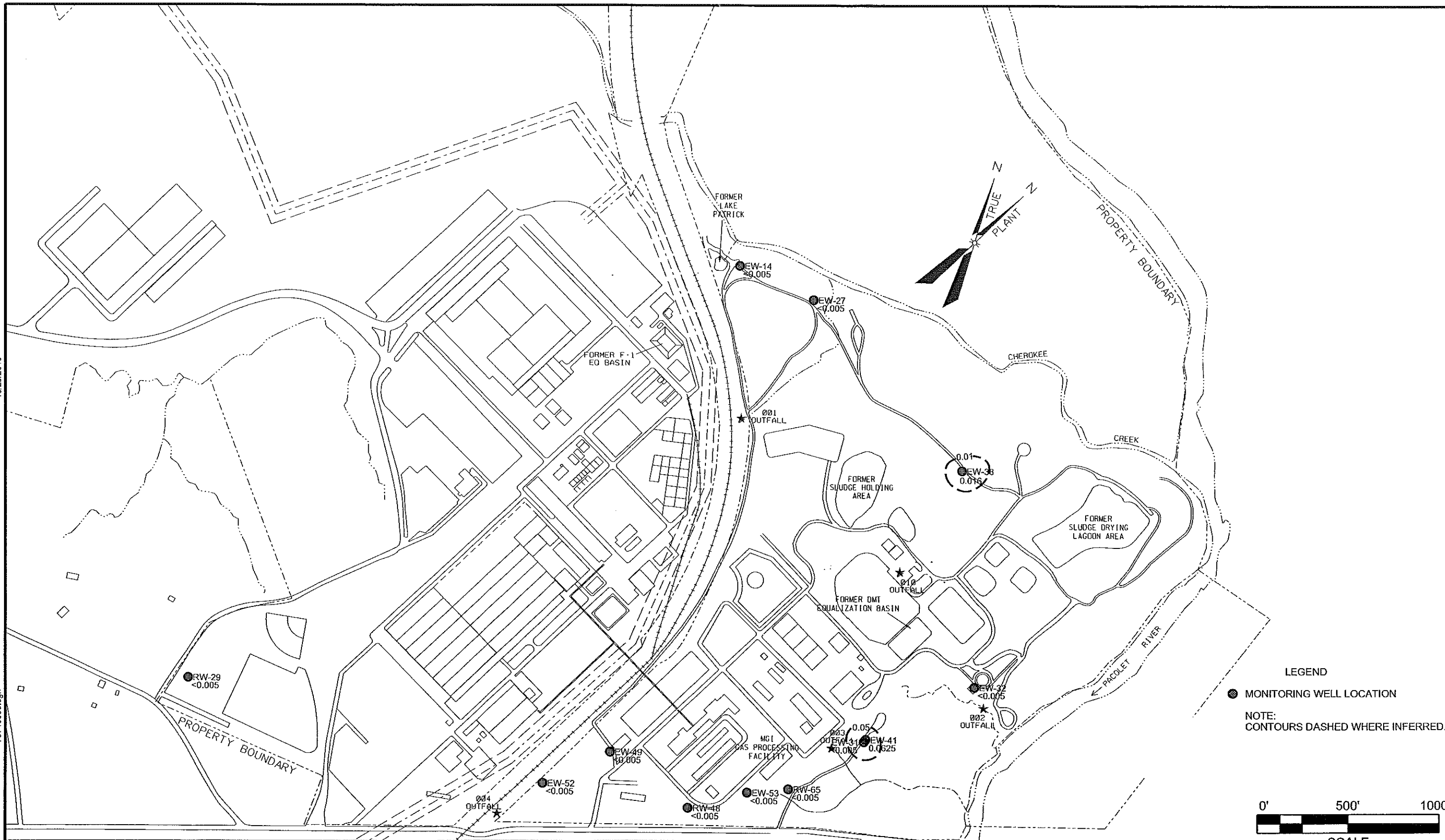
SCALE

FIGURE 3
BEDROCK POTENTIOMETRIC MAP



10/29/2010

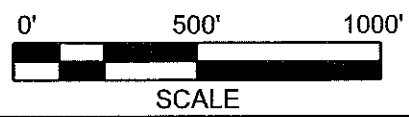
79748058.dgn



LEGEND

- MONITORING WELL LOCATION

NOTE:
CONTOURS DASHED WHERE INFERRED.



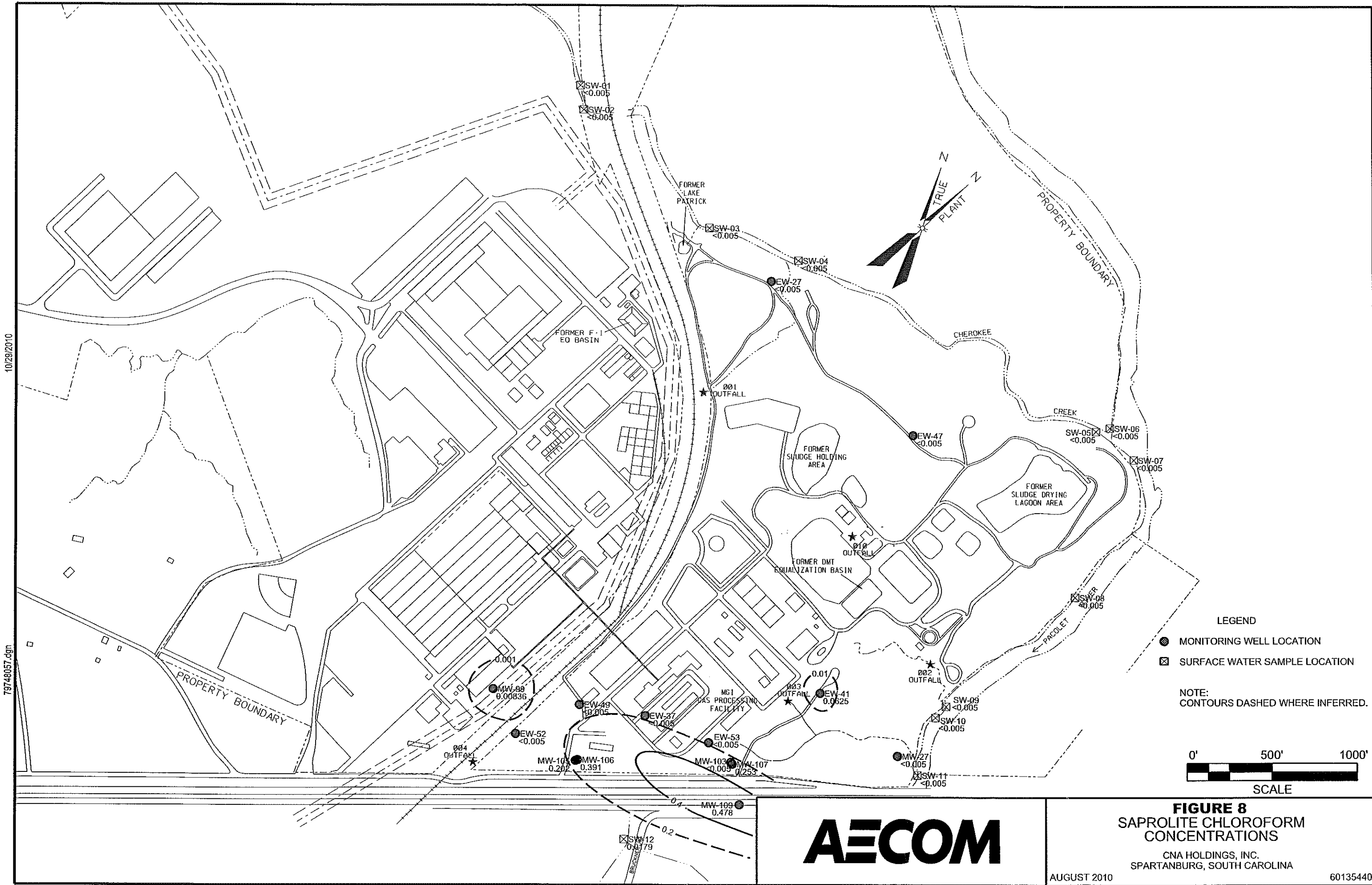
AECOM

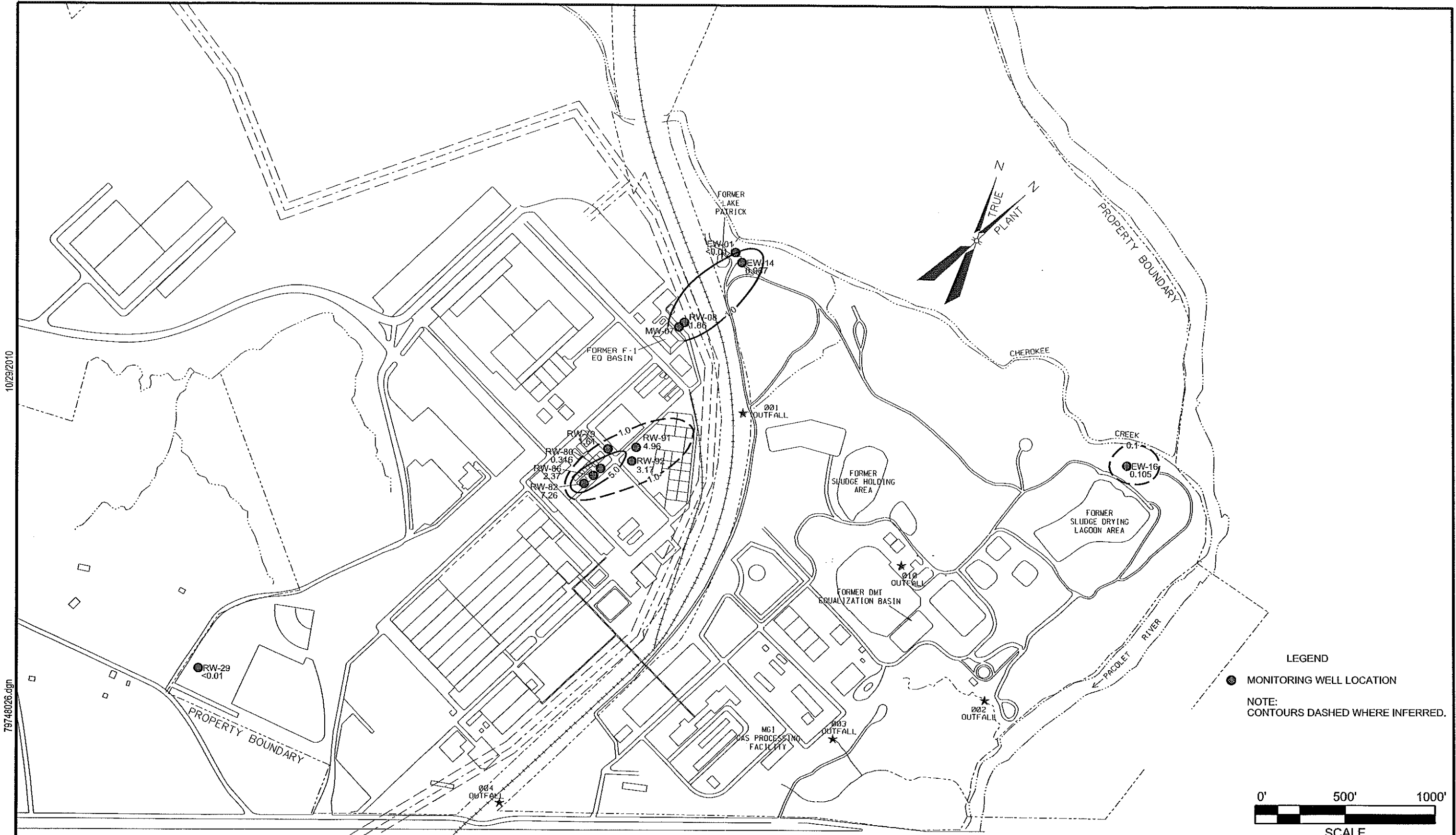
FIGURE 9
BEDROCK CHLOROFORM
CONCENTRATIONS

CNA HOLDINGS, INC.
SPARTANBURG, SOUTH CAROLINA

AUGUST 2010

60135440





AECOM

FIGURE 7
BEDROCK BIPHENYL ETHER
CONCENTRATIONS

CNA HOLDINGS, INC.
 SPARTANBURG, SOUTH CAROLINA

AUGUST 2010

60135440

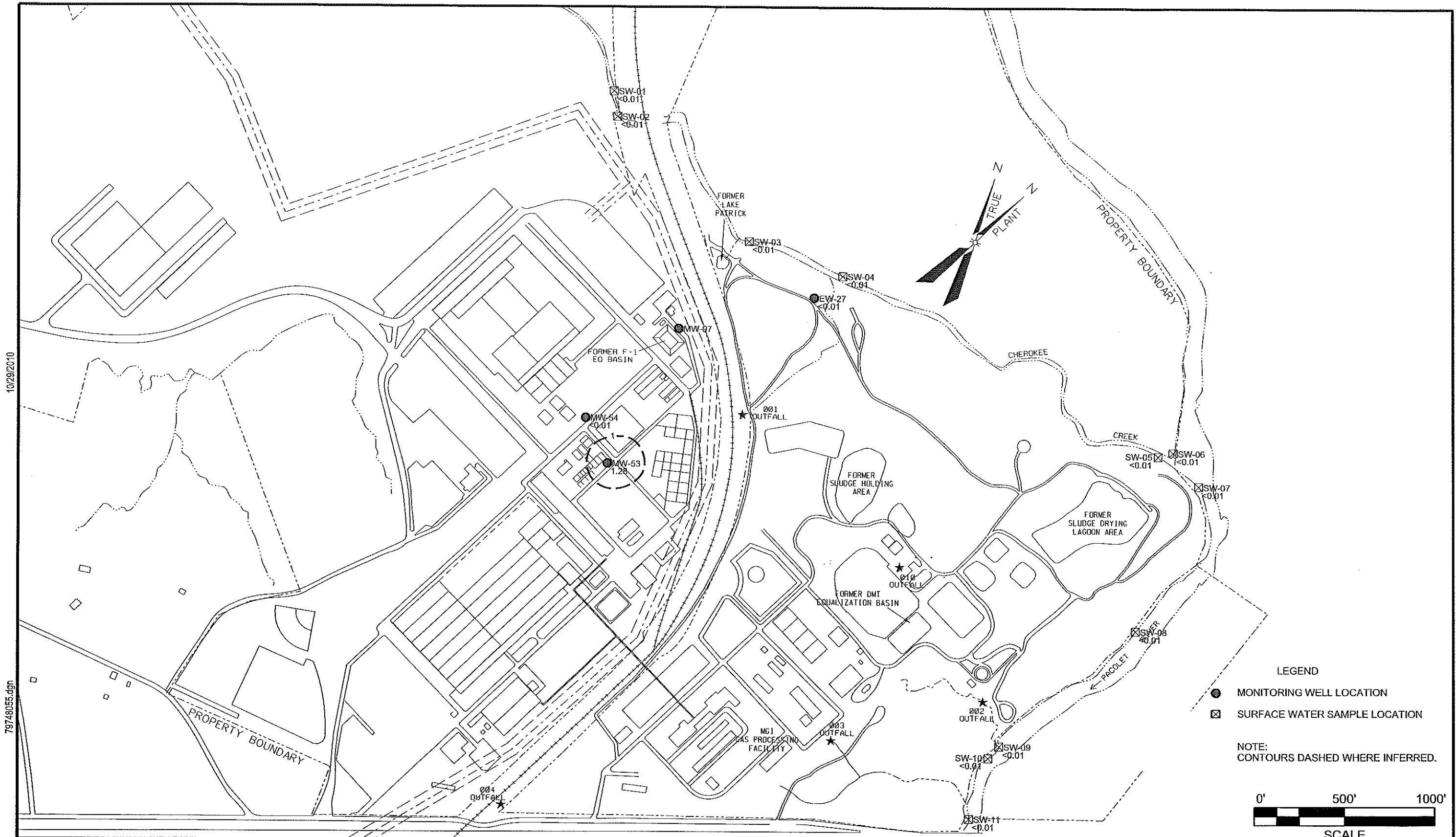
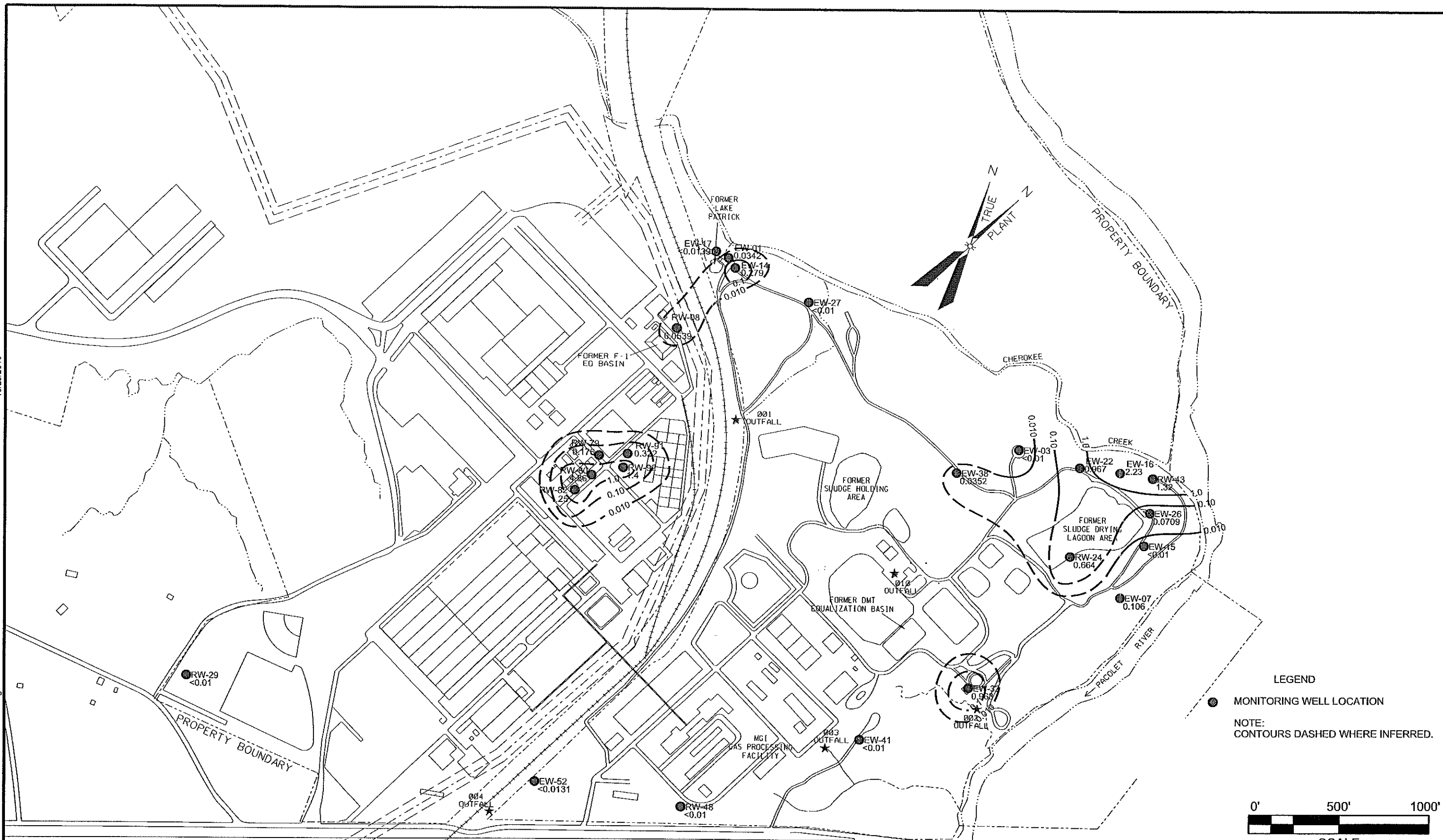


FIGURE 6
SAPROLITE BIPHENYL ETHER
CONCENTRATIONS

CNA HOLDINGS, INC.
SPARTANBURG, SOUTH CAROLINA
AUGUST 2010 60135440

10/29/2010

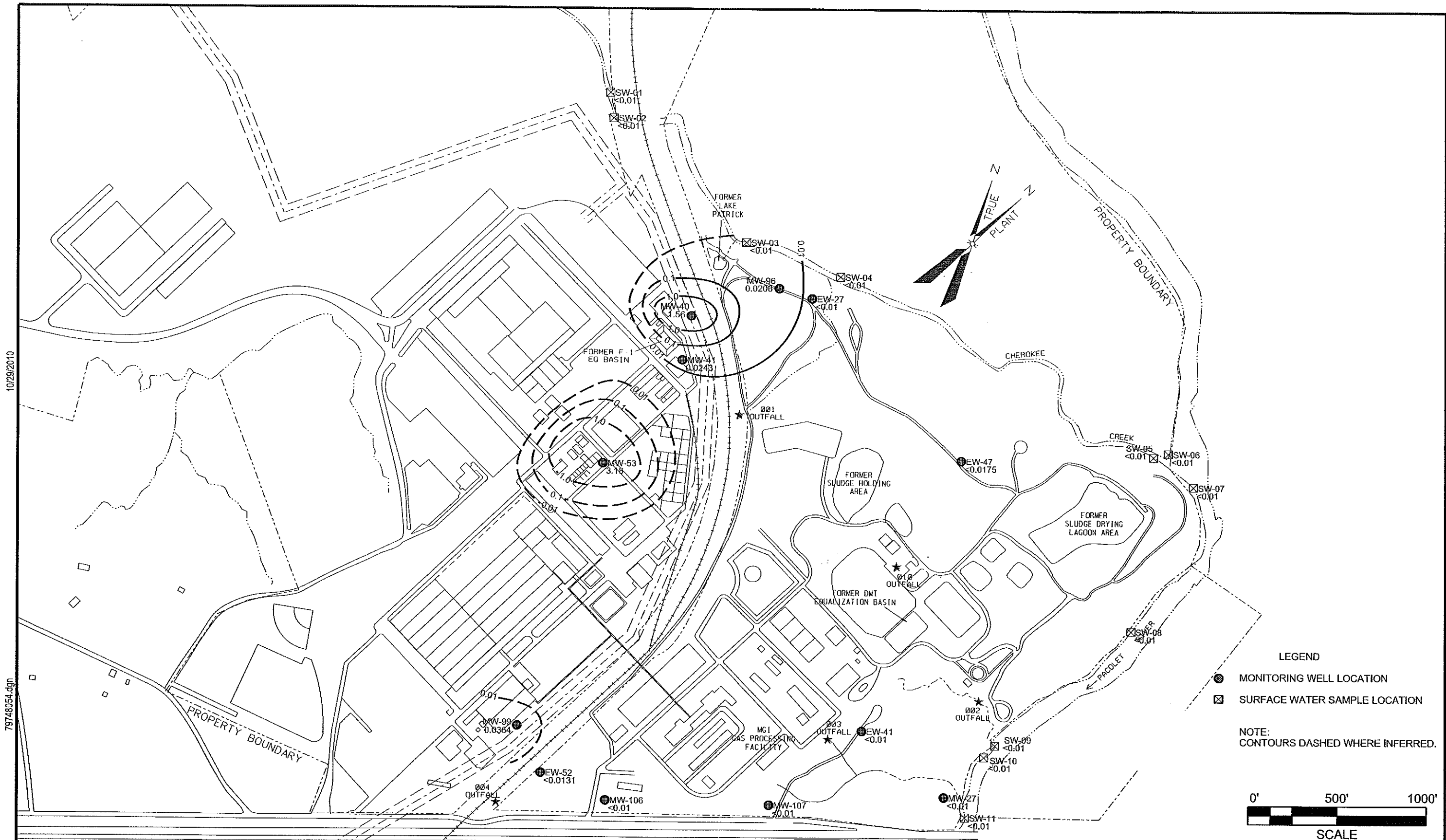
7974863.dgn



AECOM

FIGURE 5
BEDROCK 1,4-DIOXANE CONCENTRATIONS

CNA HOLDINGS, INC.
SPARTANBURG, SOUTH CAROLINA
AUGUST 2010 60135440



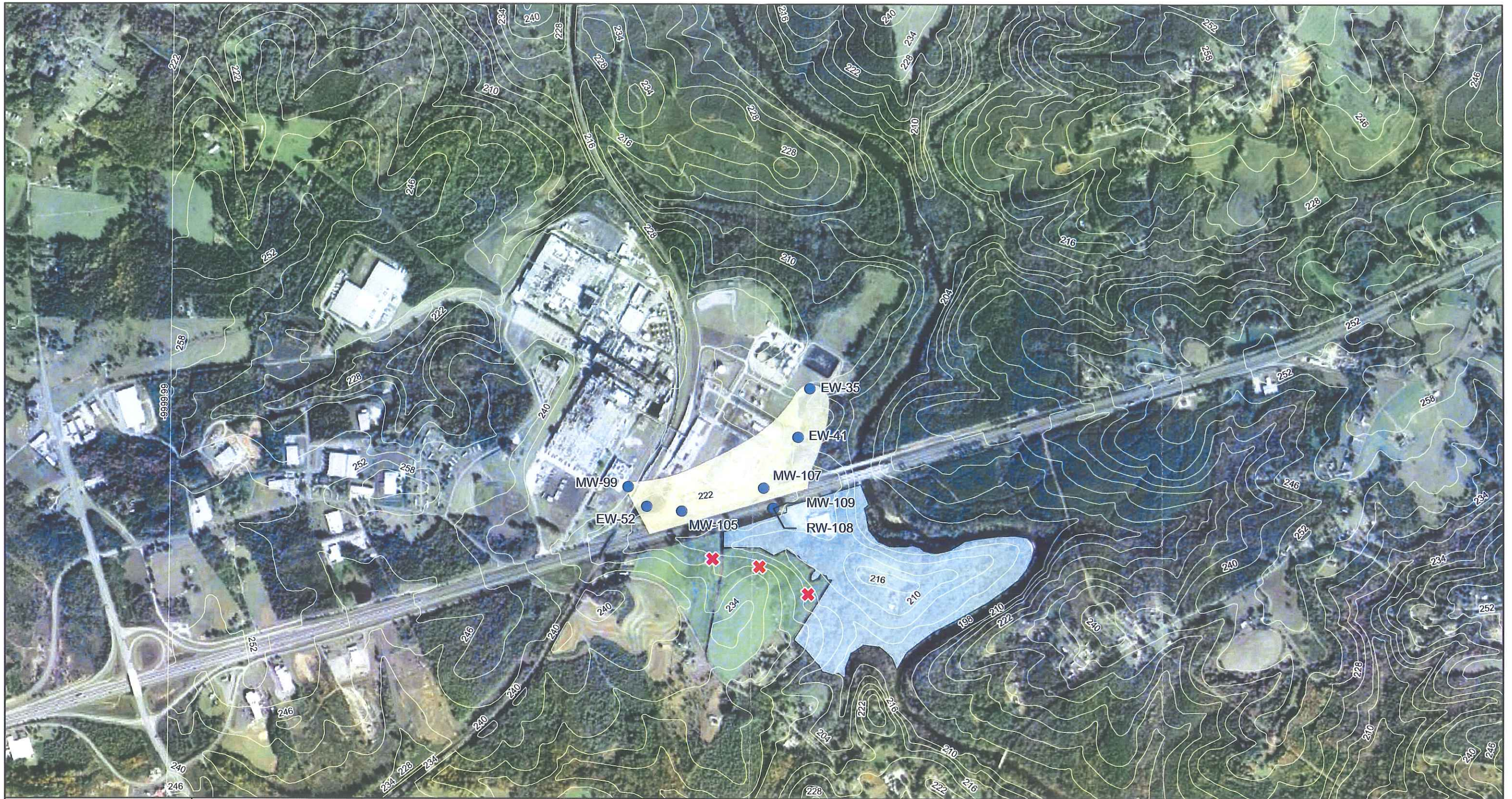
10/29/2010

79748054.dgn

AECOM

FIGURE 4
SAPROLITE 1,4-DIOXANE CONCENTRATIONS

CNA HOLDINGS, INC.
SPARTANBURG, SOUTH CAROLINA
AUGUST 2010 60135440



Legend

- Former Chloroform Extent of Groundwater Impact - Prior to Remediation
- Limited Potential Groundwater Impact Within Indicated Property
- Remote Chance for Groundwater Impact Within Indicated Property
- Approximate Location of Private Wells (<0.005 mg/L- Chloroform)

Note: Ground surface elevation contours are in meters.

Map Projection: Lambert Conformal Conic
 StatePlane South Carolina FIPS 3900 Feet
 Datum: D North American 1983

Figure 10
Downgradient Area

CNA Holdings, Inc.
 Spartanburg, South Carolina

October 29, 2010 Project#: 60135440