



# Proposed Expansion of the Greenpointe Class 2 Landfill **PUBLIC MEETING**

- ✓ To avoid echoing or feedback, all lines will be muted
- ✓ At the end of the presentation, you will have an opportunity to ask questions
- ✓ This virtual meeting will be recorded and posted on our webpage

**[www.scdhec.gov/Greenpointe](http://www.scdhec.gov/Greenpointe)**

# Option to Call In

If you are experiencing audio problems, join the virtual meeting by phone:

Phone number: **1-864-558-7311**

Access Code: **107 747 814#**



Exits the meeting. (If you accidentally exit the meeting, you can rejoin.)



**Be smart. Stay 6 feet apart.**

[scdhec.gov/COVID19](https://scdhec.gov/COVID19)



# 65 OR OLDER? IT'S YOUR TURN. TIME TO GET YOUR COVID-19 VACCINE.

Call 1-866-365-8110  
or visit [scdhec.gov/vaxlocator](https://scdhec.gov/vaxlocator)  
to find a vaccine location.

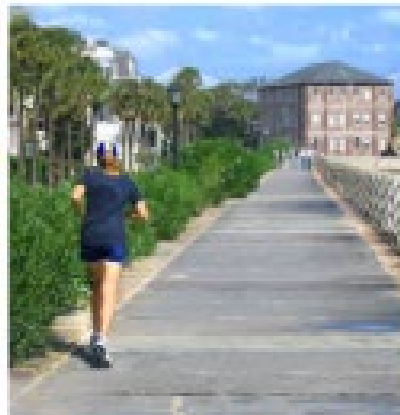
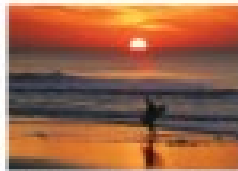
THE COVID-19 **VACCINE**





# Proposed Expansion of the Greenpointe Class 2 Landfill

PUBLIC MEETING



# Agenda

- Gathering Time & Instructions for Participating Remotely
- Introductions & Opening Remarks
- Overview of Proposed Expansion
- Question and Answer Session
- Closing Remarks
- Meeting Adjourned

# Tonight's Topics

- General Information
- Permitting Process
- Buffer and Design Requirements
- Acceptable and Unacceptable Wastes
- Groundwater Monitoring
- Hydrogen Sulfide
- Next Steps
- Questions Received During Registration



# General Information

DHEC's Solid Waste Program permits 3 types of landfills:

- Class 1 Landfills – Land-clearing debris only
- Class 2 Landfills – Construction and Demolition Debris
- Class 3 Landfills – Municipal Solid Waste

**Site:** Greenpointe Class 2 Landfill  
**Applicant:** Wasteco, Inc.  
**Site address:** 500 Hamlin Road, Easley, SC

This site is currently permitted as a Class 2 Landfill and is registered as a Construction and Demolition Debris Recycling facility.





# Greenpointe Class 2 Landfill

	Currently Permitted	Proposed Expansion
<b>Footprint</b>	22 Acres	48 Acres
<b>Storage Capacity</b>	1,520,000 cubic yards (553,535 as of 2020)	2,414,079 cubic yards (1,860,544 cu yds remaining)
<b>Maximum Elevation</b>	900 Feet	914 Feet (Unit 1) 885 Feet (Unit 2)
<b>Annual Disposal Rate</b>	57,000 tons per year (FY2020 actual disposal = 51,342 Tons)	57,000 tons per year

# Permitting Process

- **Phase 1: Siting the landfill**

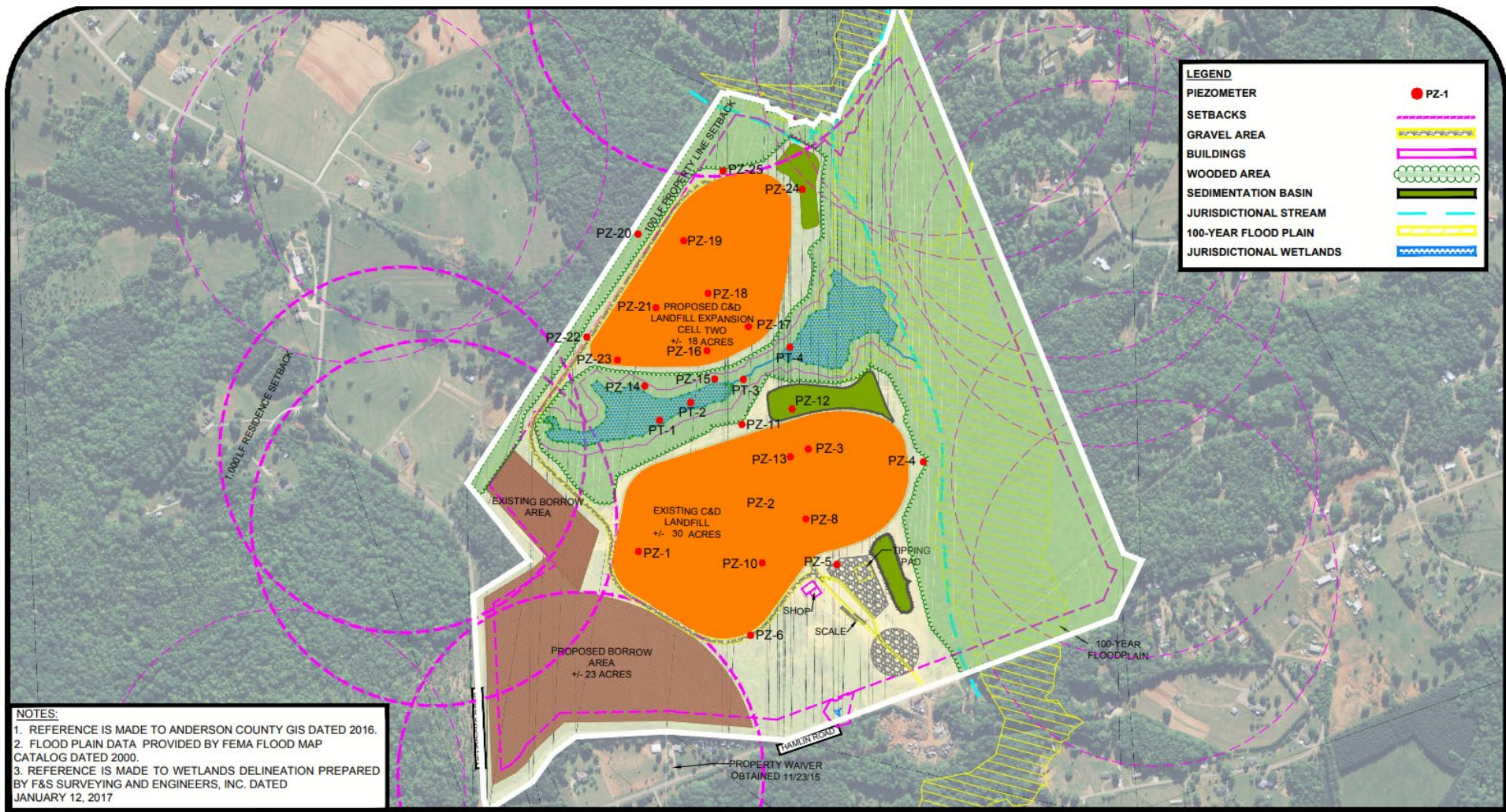
<b>August 15, 2017</b>	Phase 1 documents received
<b>December 6, 2017</b>	Notice of Draft Determination
<b>January 18, 2018</b>	Phase 1 approved

- **Phase 2: Technical application and review**

<b>October 2019</b>	Technical Application Received
<b>November 12, 2020</b>	Notice of Draft Permit
<b>February 18, 2021</b>	Public Meeting
<b>March 5, 2021</b>	Closing of the Comment Period

# Phase 1: Siting the Landfill Expansion

- Maximum footprint for the expansion is established based on:
  - Demonstration of Need
  - Consistency with the Solid Waste Management Plan
  - Consistency with zoning
  - 1,000-foot buffer to residences, schools, churches, hospitals, day cares, and public parks
- Approved in 2018



LEGEND	
PIEZOMETER	<span style="color: red;">●</span> PZ-1
SETBACKS	
GRAVEL AREA	
BUILDINGS	
WOODED AREA	
SEDIMENTATION BASIN	
JURISDICTIONAL STREAM	
100-YEAR FLOOD PLAIN	
JURISDICTIONAL WETLANDS	

**NOTES:**  
 1. REFERENCE IS MADE TO ANDERSON COUNTY GIS DATED 2016.  
 2. FLOOD PLAIN DATA PROVIDED BY FEMA FLOOD MAP CATALOG DATED 2000.  
 3. REFERENCE IS MADE TO WETLANDS DELINEATION PREPARED BY F&S SURVEYING AND ENGINEERS, INC. DATED JANUARY 12, 2017

PROPERTY WAIVER OBTAINED 11/23/15

## Phase 2: Buffer Requirements

The proposed footprint is required to be:

- 1,000 feet from residences, schools, churches, hospitals, day-cares, and public parks (established in Phase 1)
- 200 feet from any surface water
- 100 feet from property line
- 100 feet from any drinking water well
- 50 feet from any utility easement/rights-of-way
- 50 feet from wetlands

Hendricks Rd

Unit 1  
~30 Acres

Hamlin Rd

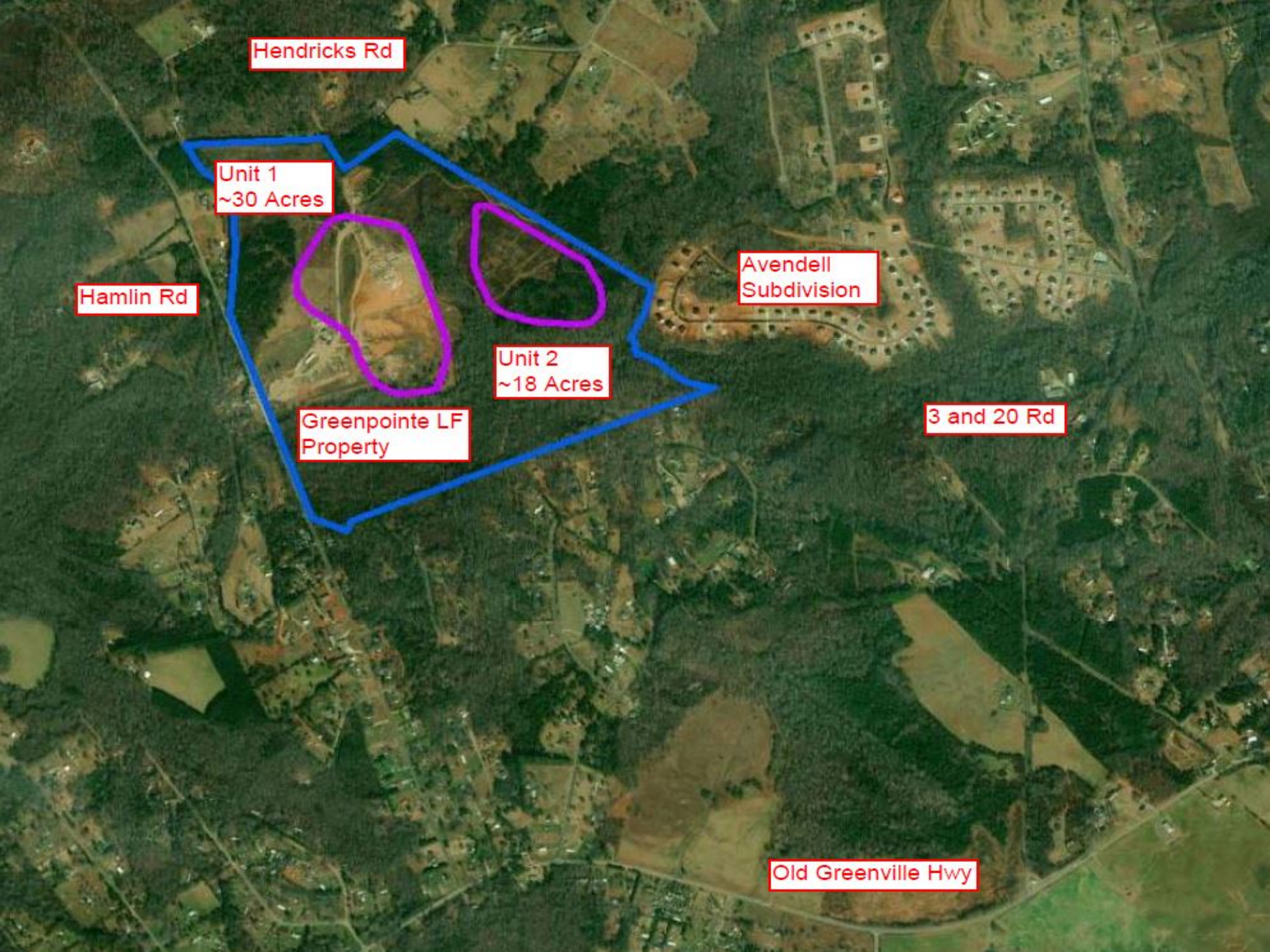
Avendell  
Subdivision

Unit 2  
~18 Acres

Greenpointe LF  
Property

3 and 20 Rd

Old Greenville Hwy





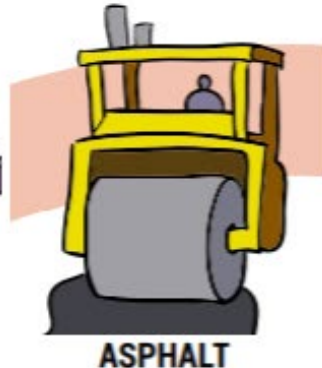
# Phase 2: Design Requirements

- Base grade of landfill must be at least 2 feet above the groundwater table
- Must include a Stormwater System that can control runoff that could be generated by 25-yr, 24-hr storm event
  - During active life and post-closure period of the landfill

# Class 2 Acceptable Wastes

Includes (but not limited to):

- Asphalt, concrete, bricks, and C&D debris
- Land-clearing Debris and Wood
- Box Springs and Mattresses
- Packaging Materials
- Glass
- Shingles





# Class 2 Unacceptable Wastes

Includes (but not limited to):

- PCBs
- Petroleum Contaminated Waste



Infectious Waste



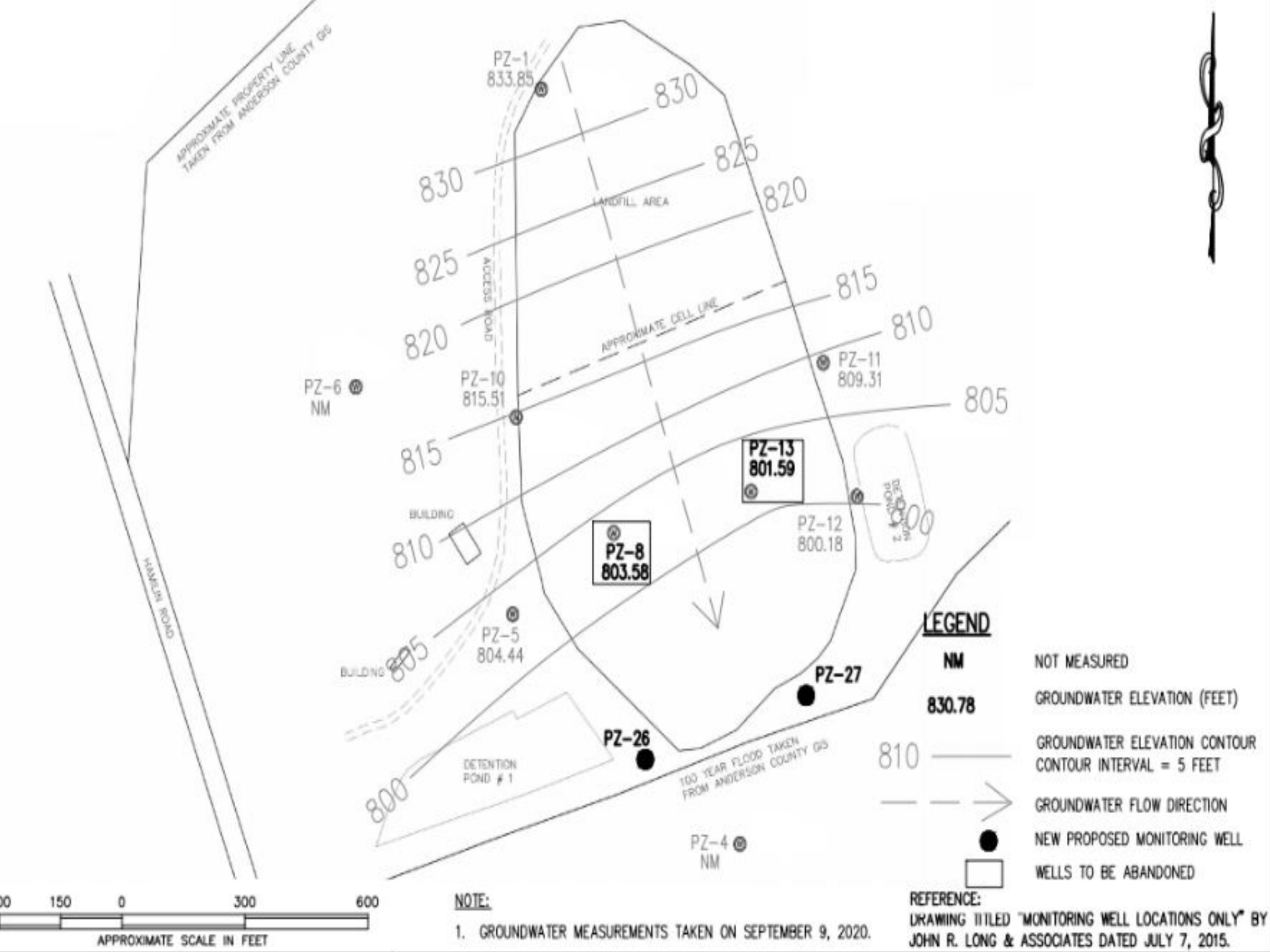
Hazardous Waste



Municipal Solid  
Waste (MSW)  
Household Trash

# Groundwater Monitoring

- 9 Groundwater Monitoring Wells
  - 7 wells are part of the active monitoring network
- Required to sample the wells and submit analytical data to DHEC twice a year
- DHEC reviews the report and provides comments
- No contaminants have been found above a groundwater protection standard
  - Maximum Contaminant Level (MCL)
  - Regional Screening Level (RSL)
  - Practical Quantitation Limit (PQL)

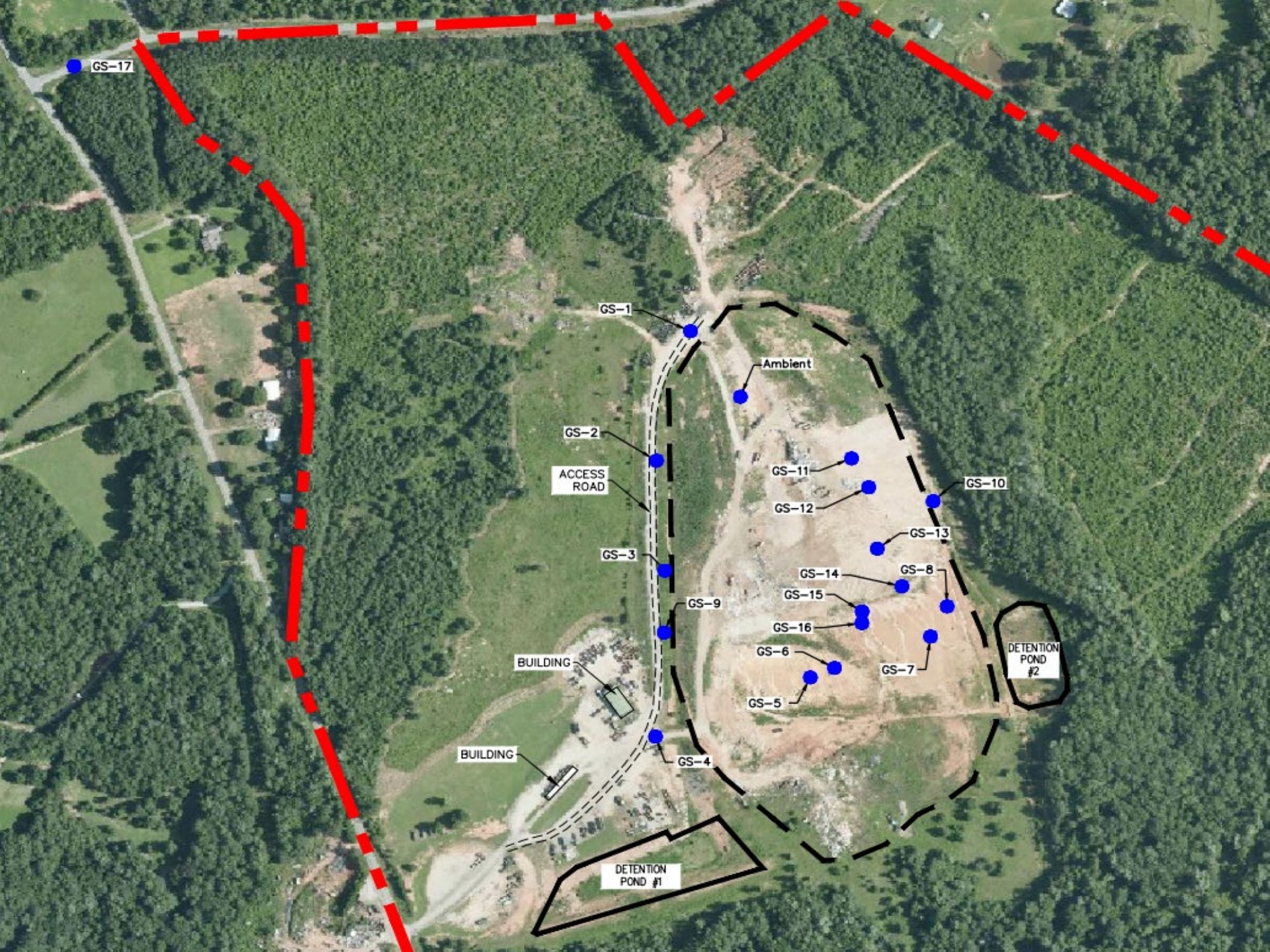


# Hydrogen Sulfide (H<sub>2</sub>S)

- Flammable, colorless gas that smells like rotten eggs
- Created when organic matter and sheetrock break down and can increase when these materials are crushed, compacted or have contact with rainwater
- Levels near landfills can change throughout the day
  - Usually highest at night or early morning when there is less wind
  - Periods of high rainfall also increase levels of hydrogen sulfide
- People usually can smell H<sub>2</sub>S at low concentrations ranging from **0.0005 to 0.3 parts per million (ppm)**.
  - OSHA limit for General Industry workers is **20 ppm**.
- Class 2 Landfills are not required to monitor for H<sub>2</sub>S

# Responding to Odor Concerns

- Routine inspections of the facility to ensure cover is applied frequently using proper soils, proper slopes are maintained, and the size of the working face is monitored
- Facility has agreed to use stockpiled dirt to cover the top of the landfill more frequently
- DHEC required the facility to conduct an H<sub>2</sub>S Assessment in January 2021
  - H<sub>2</sub>S was not detected above 1 ppm
- DHEC has increased surveillance around the landfill to evaluate odors in the area



GS-17

GS-1

Ambient

GS-2

ACCESS ROAD

GS-11

GS-10

GS-3

GS-12

GS-13

GS-9

GS-14

GS-8

GS-15

BUILDING

GS-16

GS-7

DETENTION POND #2

GS-6

GS-5

BUILDING

GS-4

DETENTION POND #1

# Next Steps

- DHEC will continue to inspect the landfill and investigate calls/emails about odors and other concerns
- DHEC is accepting comments through March 5, 2021
- DHEC will review all comments received
- DHEC will make a final decision and provide a written response to all comments
  - Final decision date begins 15-day appeal period



# How to Comment

Submit comments by mail or email through

**March 5, 2021** to:

Justin Koon  
DHEC/BLWM  
2600 Bull Street  
Columbia, SC 29201  
[koonjt@dhec.sc.gov](mailto:koonjt@dhec.sc.gov)

Application and draft permit can be found at:

[www.scdhec.gov/Greenpointe](http://www.scdhec.gov/Greenpointe)





# DHEC Contacts

## Central Office

Solid Waste Permitting  
Attn: **Brandon Phillips**  
2600 Bull St.  
Columbia, SC 29201  
**(803) 898-0254**  
[phillibl@dhec.sc.gov](mailto:phillibl@dhec.sc.gov)

## Local Office

Upstate EA Anderson – Anderson Office  
Attn: **Sabrina Prince**  
220 McGee Road  
Anderson, SC 29625  
**(864) 260-5585**  
[princesa@dhec.sc.gov](mailto:princesa@dhec.sc.gov)

[www.scdhec.gov/Greenpointe](http://www.scdhec.gov/Greenpointe)



# Landfill Contact

Wasteco, Inc  
Greenpointe Class 2  
Landfill

**864-233-0100**  
7am – 5pm M-F



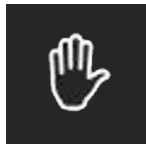
# Questions Received During Registration

- Odors
- Groundwater Quality
- Wetlands
- Inspection Frequency
- Environmental Impacts
- Operating Hours
- Road Conditions
  - Speed, Potholes, Mud, Trash, Number of Vehicles
- Noise
- Property Values
- Source Reduction and/or Recycling

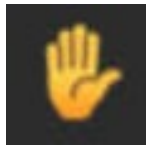


# Question & Answer Session

- ✓ Will include oral and written questions
- ✓ Unmute or click Hand Raise icon to indicate you would like to speak
- ✓ Unmuted lines and raised hands will be called on



Hand Raise  
icon



**Muted** (no-one in the meeting can hear you)



**Unmuted** (everyone in the meeting can hear you)

***Call in option***

***Phone number: 1-864-558-7311***

***Access Code: 107 747 814#***





# DHEC Staff

## **Bureau of Land & Waste Management Division of Mining & Solid Waste Management**

Marty Lindler Division Director

Justin Koon Section Manager

Brandon Phillips Project Engineer

David Oberly, II Project Hydrogeologist

## **Bureau of Environmental Health Services Anderson Office**

Chris McCluskey Area Director

Paul Wilkie Office Manager

Sabrina Prince Solid Waste Inspector



## Contact Us

[www.scdhec.gov](http://www.scdhec.gov)  
(803) 898-DHEC (3432)

## Stay Connected

