

REVISIONS	
Date	Description
11-12-19	CHANGED NW-A TO JW-A; MERGED JW-B WITH JW-A
11-12-19	HAUL ROAD TO PLANT FROM PIT RE-ROUTED TO AVOID JW-M
11-12-19	JT-5 CULVERT LENGTH REVISED AND BUFFER
11-12-19	ADDED WHERE STREAM DAYLIGHTS
12-11-19	REMOVE DEFICIENCY OF OVERBURDEN PLACEMENT IN FLOOD ZONE A

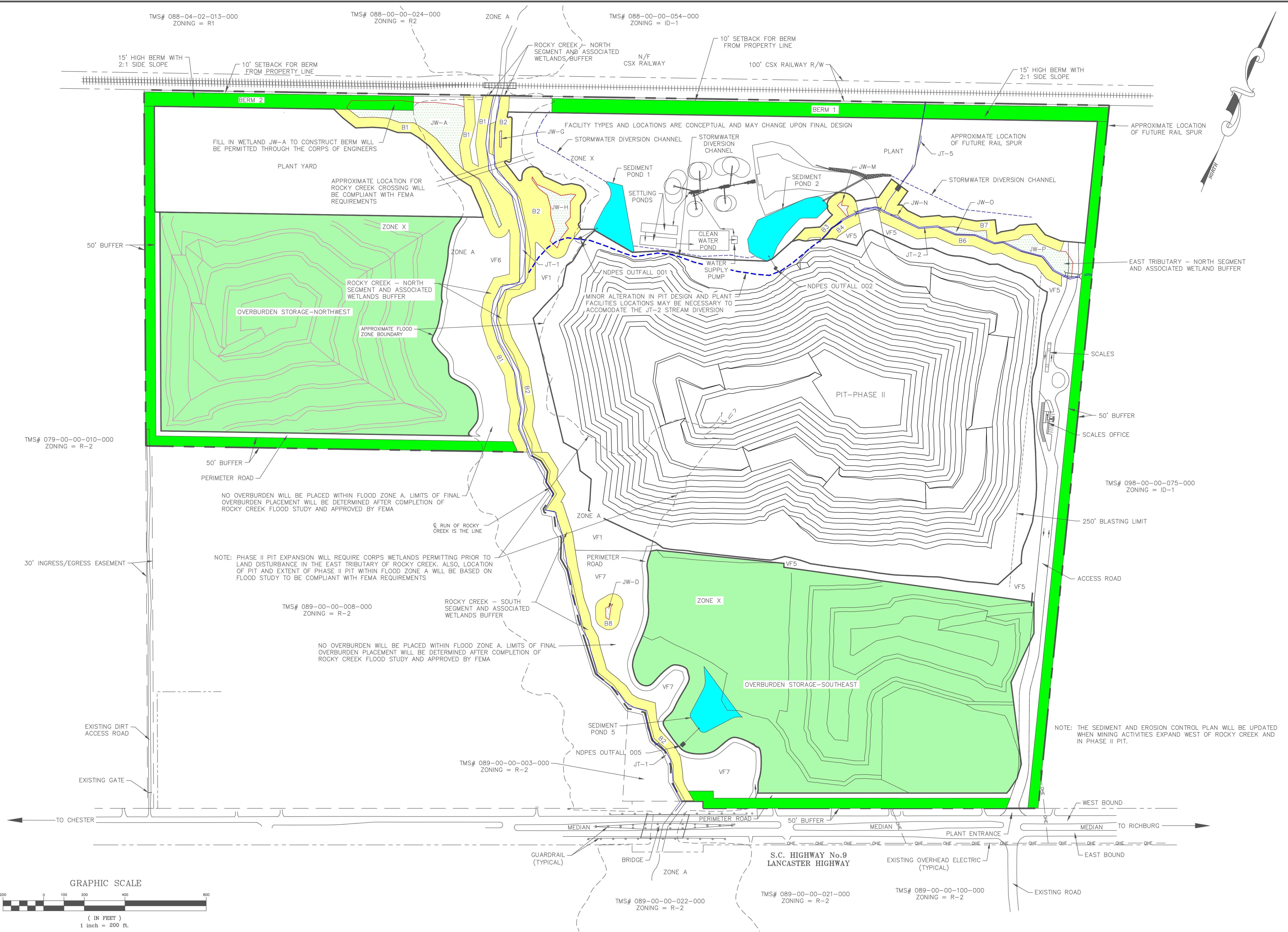
Kennedy Consulting Services, LLC
 Craig Kennedy, P.G.

 403 Seaside Court, Lexington, SC 29073
 P.O. Box 364, Irmo, SC 29063
 Tel: 803.399.1133 • Cell: 803.960.2562 • Mail: craigkennedy.KCS@gmail.com

Chester Quarry
Mine Map - Phase I
 Prepared for
Luck Stone Corporation
 Chester County - South Carolina

Project No. KCS 18-102
 Date: 02-27-19
 Approved by: RCK
 Drawn by: B.C.
 Scale: 1"=200'

Sheet No. **1**
 of **3**



REVISIONS	
Date	Description
11-12-19	CHANGED NW-A TO JW-A; MERGED JWB WITH JW-A
11-12-19	HAUL ROAD TO PLANT FROM PIT RE-ROUTED TO AVOID JW-M
11-12-19	JT-5 CULVERT LENGTH REVISED AND BUFFER
11-12-19	ADDED WHERE STREAM DAYLIGHTS
12-11-19	REMOVE DEFICIENCY OF OVERBURDEN PLACEMENT IN FLOOD ZONE A

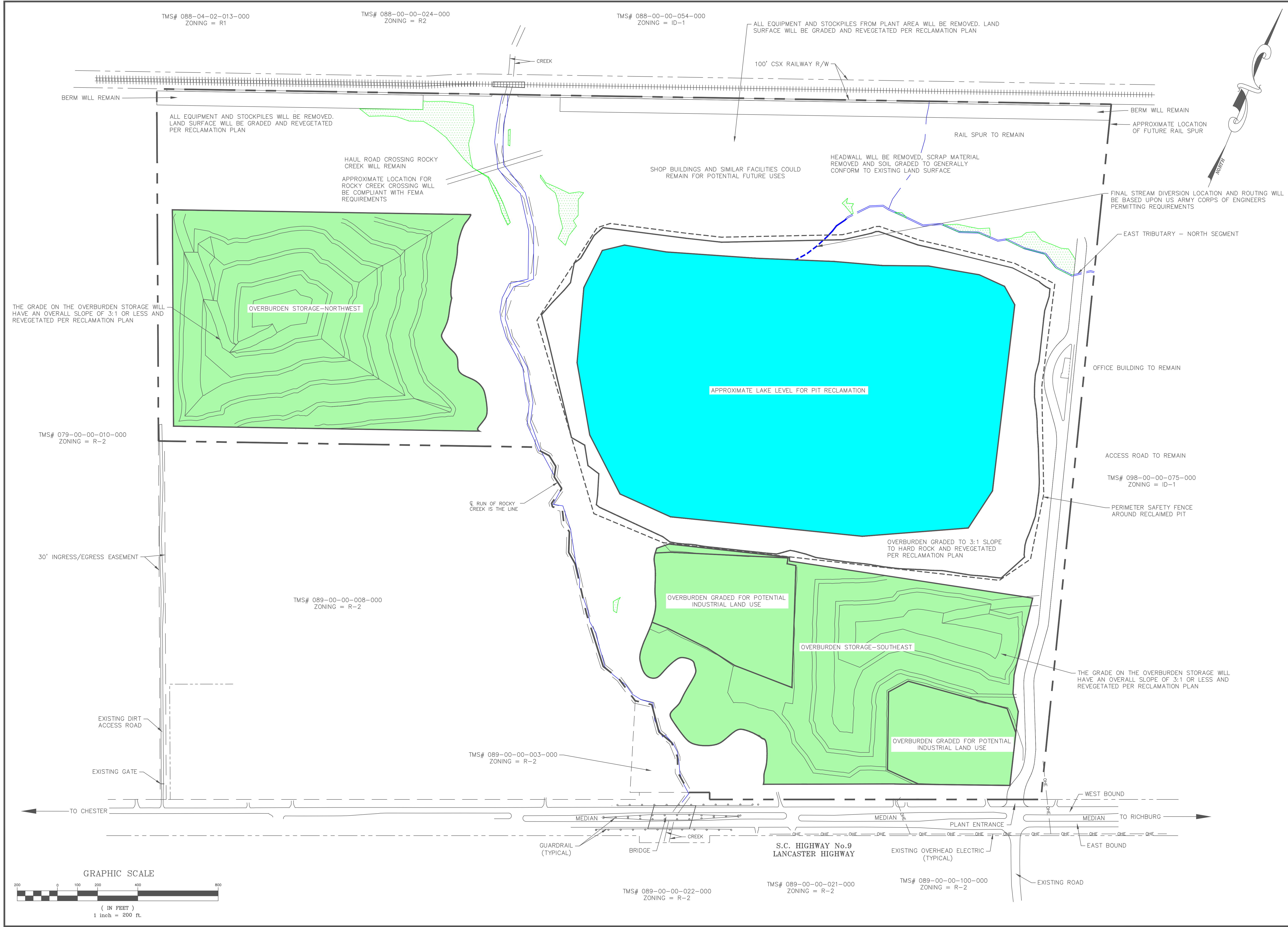
Kennedy Consulting Services, LLC
 Craig Kennedy, P.G.

 403 Seaside Court, Lexington, SC 29073
 P.O. Box 364, Irmo, SC 29063
 Tel: 803.399.1133 • Cell: 803.960.2562 • Mail: craig@kennedy-kcs@gmail.com

Chester Quarry
Mine Map - Phase II
 Prepared for
Luck Stone Corporation
 Chester County - South Carolina

Project No. KCS 18-102
 Date: 02-27-19
 Approved by: RCK
 Drawn by: B.C.
 Scale: 1"=200'

Sheet No.
2
 of
3



REVISIONS	
Description	By / Date
REMOVE DEFINITION OF OVERBURDEN IN FLOOD ZONE A	BC / 12-30-19

<p><i>Kennedy Consulting Services, LLC</i> Craig Kennedy, P.G. KCS Office: 403 Seaside Court, Lexington, SC 29073 Tel: 803.399.1133 • Cell: 803.960.2562 • Mail: P.O. Box 364, Irmo, SC 29063 Email: craigkennedy_KCS@gmail.com</p>	<p>Chester Quarry Reclamation Map Prepared for Luck Stone Corporation Chester County - South Carolina</p>
---	--

Project No. KCS 18-102
Date: 02-27-19
Approved by: RCK
Drawn by: B.C.
Scale: 1"=200'

Sheet No.
3
of
3