



2016 AYRSLEY TOWN BLVD
SUITE 2-A
CHARLOTTE, NC 28273
(704) 523-4726
ENGINEERING FIRM
LICENSE NUMBER: F-0176

RIVER BEND AGGREGATES, LLC



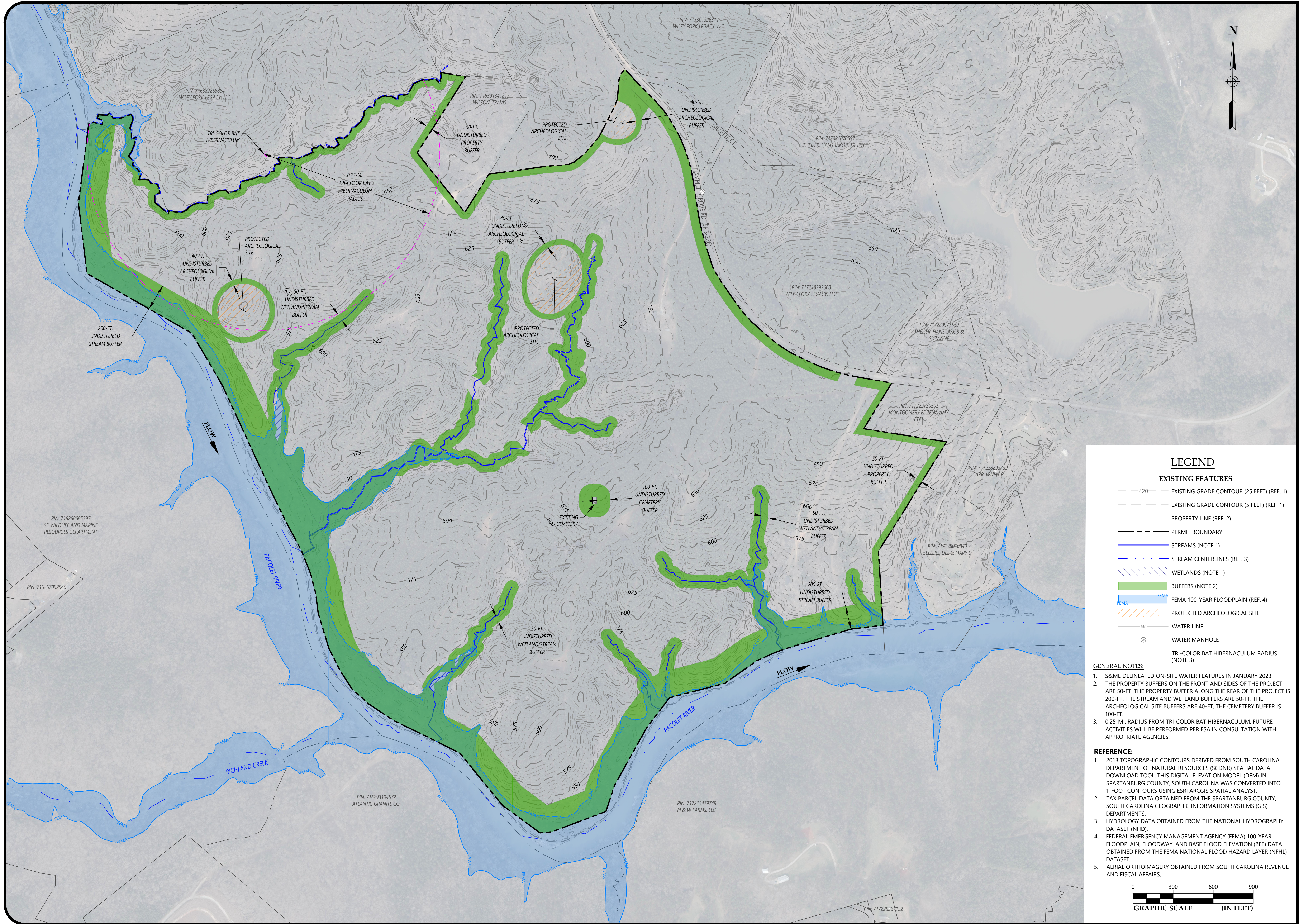
NO.	DATE	ISSUED FOR CLIENT REVIEW	DESCRIPTION	BY	CHK	CIS	APV
1	10/16/2023						

EXISTING CONDITIONS PLAN

RIVER BEND QUARRY SITE - CONCEPTUAL PLAN
RIVER BEND AGGREGATES, LLC
SPARTANBURG COUNTY, SOUTH CAROLINA

PROJECT NUMBER
22610504B
DRAWING NUMBER

1 **9**



LEGEND

EXISTING FEATURES

- EXISTING GRADE CONTOUR (25 FEET) (REF. 1)
- EXISTING GRADE CONTOUR (5 FEET) (REF. 1)
- PROPERTY LINE (REF. 2)
- PERMIT BOUNDARY
- STREAMS (NOTE 1)
- STREAM CENTERLINES (REF. 3)
- WETLANDS (NOTE 1)
- BUFFERS (NOTE 2)
- FEMA 100-YEAR FLOODPLAIN (REF. 4)
- PROTECTED ARCHEOLOGICAL SITE
- WATER LINE
- WATER MANHOLE
- TRI-COLOR BAT HIBERNACULUM RADIUS (NOTE 3)

GENERAL NOTES:

- S&ME DELINEATED ON-SITE WATER FEATURES IN JANUARY 2023.
- THE PROPERTY BUFFERS ON THE FRONT AND SIDES OF THE PROJECT ARE 50-FT. THE PROPERTY BUFFER ALONG THE REAR OF THE PROJECT IS 200-FT. THE STREAM AND WETLAND BUFFERS ARE 50-FT. THE ARCHEOLOGICAL SITE BUFFERS ARE 40-FT. THE CEMETERY BUFFER IS 100-FT.
- 0.25-MI. RADIUS FROM TRI-COLOR BAT HIBERNACULUM, FUTURE ACTIVITIES WILL BE PERFORMED PER ESA IN CONSULTATION WITH APPROPRIATE AGENCIES.

REFERENCE:

- 2013 TOPOGRAPHIC CONTOURS DERIVED FROM SOUTH CAROLINA DEPARTMENT OF NATURAL RESOURCES (SCDNR) SPATIAL DATA DOWNLOAD TOOL. THIS DIGITAL ELEVATION MODEL (DEM) IN SPARTANBURG COUNTY, SOUTH CAROLINA WAS CONVERTED INTO 1-FOOT CONTOURS USING ESRI ARCGIS SPATIAL ANALYST.
- TAX PARCEL DATA OBTAINED FROM THE SPARTANBURG COUNTY, SOUTH CAROLINA GEOGRAPHIC INFORMATION SYSTEMS (GIS) DEPARTMENTS.
- HYDROLOGY DATA OBTAINED FROM THE NATIONAL HYDROGRAPHY DATASET (NHD).
- FEDERAL EMERGENCY MANAGEMENT AGENCY (FEMA) 100-YEAR FLOODPLAIN, FLOODWAY, AND BASE FLOOD ELEVATION (BFE) DATA OBTAINED FROM THE FEMA NATIONAL FLOOD HAZARD LAYER (NFHL) DATASET.
- AERIAL ORTHOIMAGERY OBTAINED FROM SOUTH CAROLINA REVENUE AND FISCAL AFFAIRS.

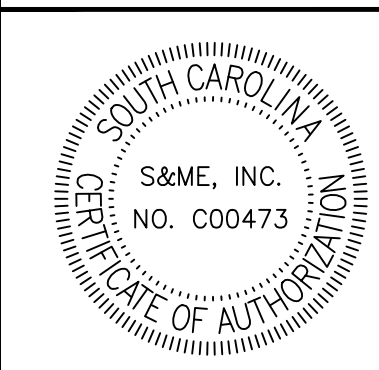


DRAWING PATH: T:\Charlottesville\1359\Projects\2023\22610504B_Synergy_Materials_Packet Quarry_Packet\SC\Civil\Geo_Env\CAD\DWG\MINING_SWPPP\EXISTING_CONDITIONS_Plan.dwg



2016 AYRSLEY TOWN BLVD
SUITE 2-A
CHARLOTTE, NC 28273
(704) 523-4726
ENGINEERING FIRM
LICENSE NUMBER: F-0176

RIVER BEND AGGREGATES, LLC



LEGEND

EXISTING FEATURES

- 420 --- EXISTING GRADE CONTOUR (25 FEET) (REF. 1)
- 5 --- EXISTING GRADE CONTOUR (5 FEET) (REF. 1)
- --- PROPERTY LINE (REF. 2)
- --- PERMIT BOUNDARY
- --- PIT PHASE BOUNDARY
- --- MINING SETBACK (NOTE 1)
- --- STREAMS (NOTE 2)
- --- STREAM CENTERLINES (REF. 3)
- --- WETLANDS (NOTE 2)
- --- BUFFERS (NOTE 3)
- --- VEGETATED BERMS/BUFFER
- --- FEMA 100-YEAR FLOODPLAIN (REF. 4)
- --- PROTECTED ARCHEOLOGICAL SITE
- --- WATER LINE
- --- WATER MANHOLE
- --- TRI-COLOR BAT HIBERNACULUM RADIUS (NOTE 6)

PROPOSED FEATURES

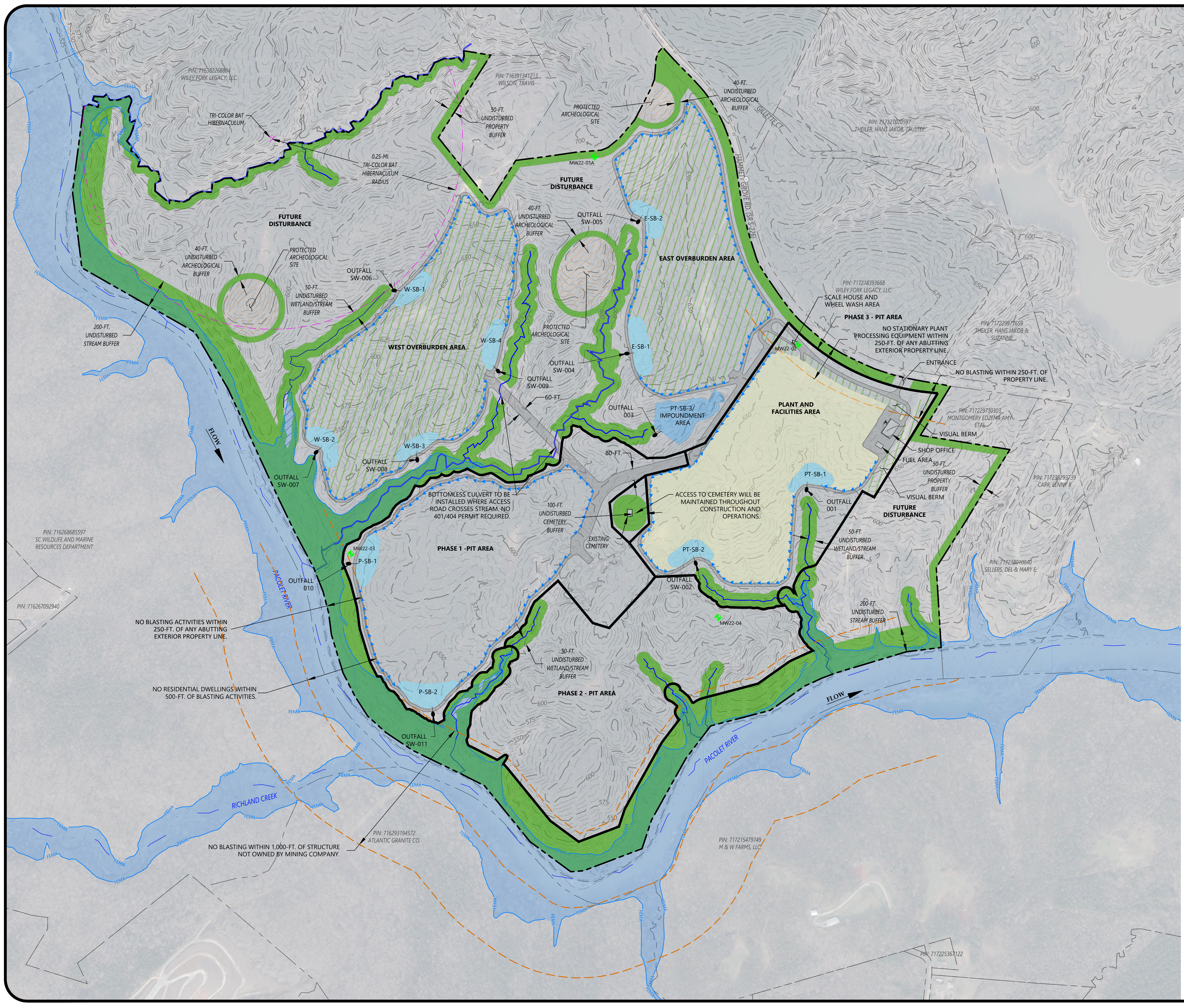
- --- SEDIMENT BASIN
- --- PRELIMINARY LOCATION OF OUTFALL AND PLUNGE POOL
- --- ACCESS/HAUL ROAD
- --- STORMWATER CHANNEL
- --- LONG TERM MONITORING WELL

GENERAL NOTES:

1. PER SECTION 6.X.3 OF THE TOWN OF PACOLET ZONING ORDINANCE, 250-FT. SETBACK REQUIRED FOR ALL STATIONARY PLANT PROCESSING EQUIPMENT FROM ANY ABUTTING EXTERIOR PROPERTY LINE. PER SECTION 6.X.5 OF THE TOWN OF PACOLET ZONING ORDINANCE, 250-FT. SETBACK REQUIRED FOR ALL BLASTING ACTIVITIES FROM ANY ABUTTING EXTERIOR PROPERTY LINE AND 500-FT. SETBACK TO ANY RESIDENTIAL DWELLING.
2. S&M DELINEATED ON-SITE WATER FEATURES IN JANUARY 2023.
3. THE PROPERTY BUFFERS ON THE FRONT AND SIDES OF THE PROJECT ARE 50-FT. THE PROPERTY BUFFER ALONG THE REAR OF THE PROJECT IS 200-FT. THE STREAM AND WETLAND BUFFERS ARE 50-FT. THE ARCHEOLOGICAL SITE BUFFERS ARE 40-FT. THE CEMETERY BUFFER IS 100-FT.
4. PER REGULATION 89-150H OF THE SOUTH CAROLINA CODE SECTION 48-20-210, NO BLASTING MAY OCCUR WITHIN 250-FT. OF PROPERTY BOUNDARIES.
5. PER REGULATION 89-150I OF THE SOUTH CAROLINA CODE SECTION 48-20-210, NO BLASTING MAY OCCUR WITHIN 1,000-FT. OF A STRUCTURE NOT OWNED BY THE MINING COMPANY.
6. 0.25-MI. RADIUS FROM TRI-COLOR BAT HIBERNACULUM. FUTURE ACTIVITIES WILL BE PERFORMED PER ESA IN CONSULTATION WITH APPROPRIATE AGENCIES.

REFERENCE:

1. 2013 TOPOGRAPHIC CONTOURS DERIVED FROM SOUTH CAROLINA DEPARTMENT OF NATURAL RESOURCES (SCDNR) SPATIAL DATA DOWNLOAD TOOL. THIS DIGITAL ELEVATION MODEL (DEM) IN SPARTANBURG COUNTY, SOUTH CAROLINA WAS CONVERTED INTO 1-FOOT CONTOURS USING ESRI ARCGIS SPATIAL ANALYST.
2. TAX PARCEL DATA OBTAINED FROM THE SPARTANBURG COUNTY, SOUTH CAROLINA GEOGRAPHIC INFORMATION SYSTEMS (GIS) DEPARTMENTS.
3. HYDROLOGY DATA OBTAINED FROM THE NATIONAL HYDROGRAPHY DATASET (NHD).
4. FEDERAL EMERGENCY MANAGEMENT AGENCY (FEMA) 100-YEAR FLOODPLAIN, FLOODWAY, AND BASE FLOOD ELEVATION (BFE) DATA OBTAINED FROM THE FEMA NATIONAL FLOOD HAZARD LAYER (NFHL) DATASET.
5. AERIAL ORTHOIMAGERY OBTAINED FROM SOUTH CAROLINA REVENUE AND FISCAL AFFAIRS.



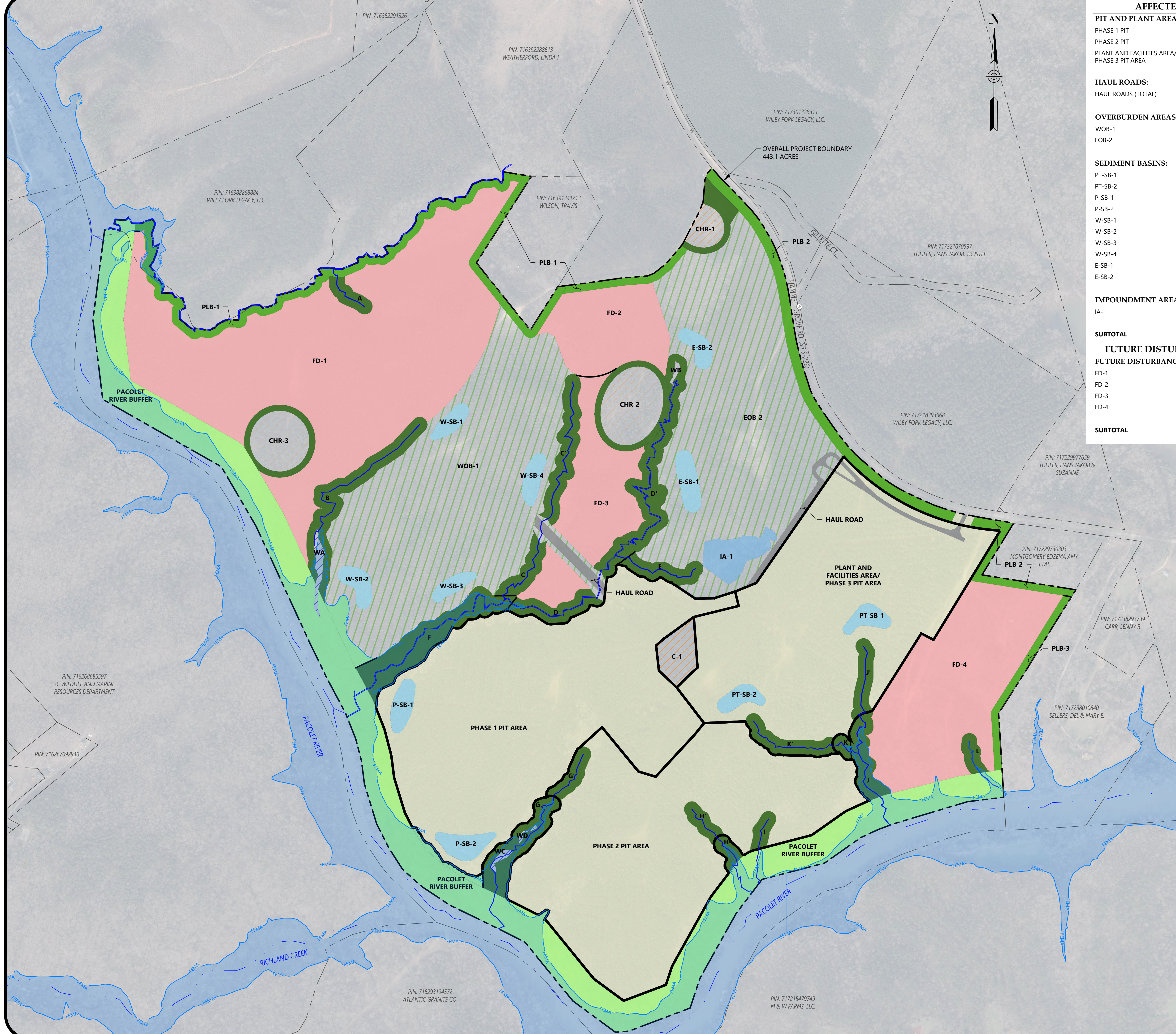
NO.	DATE	ISSUED FOR CLIENT REVIEW	DESCRIPTION	AW	CHK	APV
1	10/16/2023					

OVERALL SITE PLAN

RIVER BEND QUARRY SITE - CONCEPTUAL PLAN
RIVER BEND AGGREGATES, LLC
SPARTANBURG COUNTY, SOUTH CAROLINA

PROJECT NUMBER
22610504B
DRAWING NUMBER

DRAWING PATH: T:\Charlotte - 1350\Projects\2022\22610504B_Synergy_Materials_Pacolet Quarry_Pacolet SC Civil-Geo_Env\CAD\DWG\Mining_SWPPP\OVERALL SITE PLAN.dwg



AFFECTED ACREAGE:		BUFFER ACREAGE:	
PIT AND PLANT AREAS:			
PHASE 2 PIT	53.5 AC	PLB-1	7.4 AC
PHASE 2 PIT	48.3 AC	PLB-2	5.9 AC
PLANT AND FACILITIES AREA/ PHASE 3 PIT AREA	44.4 AC	PLB-3	1.5 AC
HAUL ROADS:			
HAUL ROADS (TOTAL)	2.7 AC	RIVER/STREAM BUFFERS:	
OVERBURDEN AREAS:		PACOLET RIVER BUFFER	46.2 AC
WOB-1	42.6 AC	A	0.8 AC
EOB-2	39.1 AC	B	3.7 AC
SEDIMENT BASINS:		C	1.2 AC
PT-SB-1	0.8 AC	C'	2.5 AC
PT-SB-2	0.8 AC	D	1.6 AC
P-SB-1	0.9 AC	D'	4.6 AC
P-SB-2	1.1 AC	E	1.4 AC
W-SB-1	0.7 AC	F	4.3 AC
W-SB-2	0.9 AC	G	2.4 AC
W-SB-3	0.7 AC	G'	1.0 AC
W-SB-4	0.8 AC	H	0.6 AC
E-SB-1	1.1 AC	H'	0.8 AC
E-SB-2	0.8 AC	I	0.6 AC
IMPOUNDMENT AREA:		J	1.7 AC
IA-1	2.2 AC	J'	1.2 AC
SUBTOTAL		K	0.3 AC
	241.4 AC	K'	1.6 AC
FUTURE DISTURBANCE ACREAGE:		L	0.7 AC
FUTURE DISTURBANCE AREAS:			
FD-1	54.5 AC	WETLANDS:	
FD-2	9.0 AC	WA	0.5 AC
FD-3	10.6 AC	WB	0.1 AC
FD-4	21.7 AC	WC	0.1 AC
SUBTOTAL		WD	0.1 AC
	95.8 AC	CEMETERY BUFFER:	
FUTURE DISTURBANCE AREAS:		C-1	1.8 AC
CULTURAL/HISTORICAL RESOURCE BUFFERS:			
CHR-1 (38590014)	1.1 AC	SUBTOTAL	
CHR-1-BUFFER	1.1 AC	105.9 AC	
CHR-2 (385P0020)	3.7 AC	PARCEL ACREAGE	
CHR-2-BUFFER	1.5 AC	INTERNAL PARCELS:	
CHR-3 (385P0052)	2.7 AC	PIN: 717228279445	13.3 AC
CHR-3-BUFFER	1.2 AC	PIN: 71722900810	0.7 AC
SUBTOTAL		PIN: 717228004985	5.0 AC
	105.9 AC	PIN: 717218902632	8.2 AC
LEGEND			
EXISTING FEATURES		PROPOSED FEATURES	
- - - - -	PROPERTY LINE (REF. 1)	- - - - -	AREA BOUNDARY
- - - - -	PERMIT BOUNDARY	█	STREAM/WETLAND BUFFER AREA
- - - - -	PIT PHASE BOUNDARY	█	PROPERTY BUFFER AREA
- - - - -	STREAM CENTERLINES (REF. 2)	█	RIVER BUFFER AREA
—	STREAMS (NOTE 1)	█	SEDIMENT BASIN
▨	WETLANDS (NOTE 1)	█	IMPOUNDMENT AREA
—	FEMA 100-YEAR FLOODPLAIN (REF. 3)	█	PLANT/PIT AREA
—		█	HAUL ROAD
—		▨	OVERBURDEN AREA
—		█	FUTURE DISTURBANCE AREA
—		▨	CULTURAL RESOURCES BUFFER AREA
GENERAL NOTES:			
1. S&ME DELINEATED ON-SITE WATER FEATURES IN JANUARY 2023.			
REFERENCE:			
1. TAX PARCEL DATA OBTAINED FROM THE SPARTANBURG COUNTY, SOUTH CAROLINA GEOGRAPHIC INFORMATION SYSTEMS (GIS) DEPARTMENTS.			
2. HYDROLOGY DATA OBTAINED FROM THE NATIONAL HYDROGRAPHY DATASET (NHD).			
3. FEDERAL EMERGENCY MANAGEMENT AGENCY (FEMA) 100-YEAR FLOODPLAIN, FLOODWAY, AND BASE FLOOD ELEVATION (BFE) DATA OBTAINED FROM THE FEMA NATIONAL FLOOD HAZARD LAYER (NFHL) DATASET.			
4. AERIAL ORTHOIMAGERY OBTAINED FROM SOUTH CAROLINA REVENUE AND FISCAL AFFAIRS.			

S&ME

2016 AYRSLEY TOWN BLVD
SUITE 2-A
CHARLOTTE, NC 28273
(704) 523-4726
ENGINEERING FIRM
LICENSE NUMBER: F-0176

RIVER BEND AGGREGATES, LLC



NO.	DATE	ISSUED FOR CLIENT REVIEW	DESCRIPTION	BY	CHK	APV
10/16/2023						

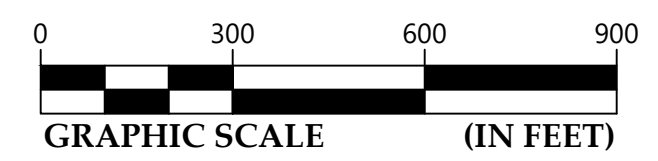
NO.	DATE	ISSUED FOR CLIENT REVIEW	DESCRIPTION	BY	CHK	APV
10/16/2023						

SITE DISTURBANCES

RIVER BEND QUARRY SITE - CONCEPTUAL PLAN
RIVER BEND AGGREGATES, LLC
SPARTANBURG COUNTY, SOUTH CAROLINA

PROJECT NUMBER
22610504B

DRAWING NUMBER
3 9



DRAWING PATH: T:\Charlotte\1359\Projects\2022\22610504B_Synergy_Materials_Pacolet Quarry_Pacolet SC Civil-Geo-Env\CAD\DWG\MINING_SWPPP\SITE DISTURBANCES.dwg