

# WEST COX FERRY ROAD SAND MINE

Mine Map  
MINE LAYOUT

CLIENT:  
MOSS PARK PARTNERS LLC

LOCATION: CONWAY, SC  
DATE: 12/13/2022  
JOB NUMBER: 211204.05

DRAWN BY: MHD  
REVIEWED BY: TEG

SHEET: 1  
SCALE: 1" = 200'



11655 HIGHWAY 707  
MURRELLS INLET, SC 29576  
843.651.7900  
(FAX) 843.651.7903  
www.earthworksgroup.com

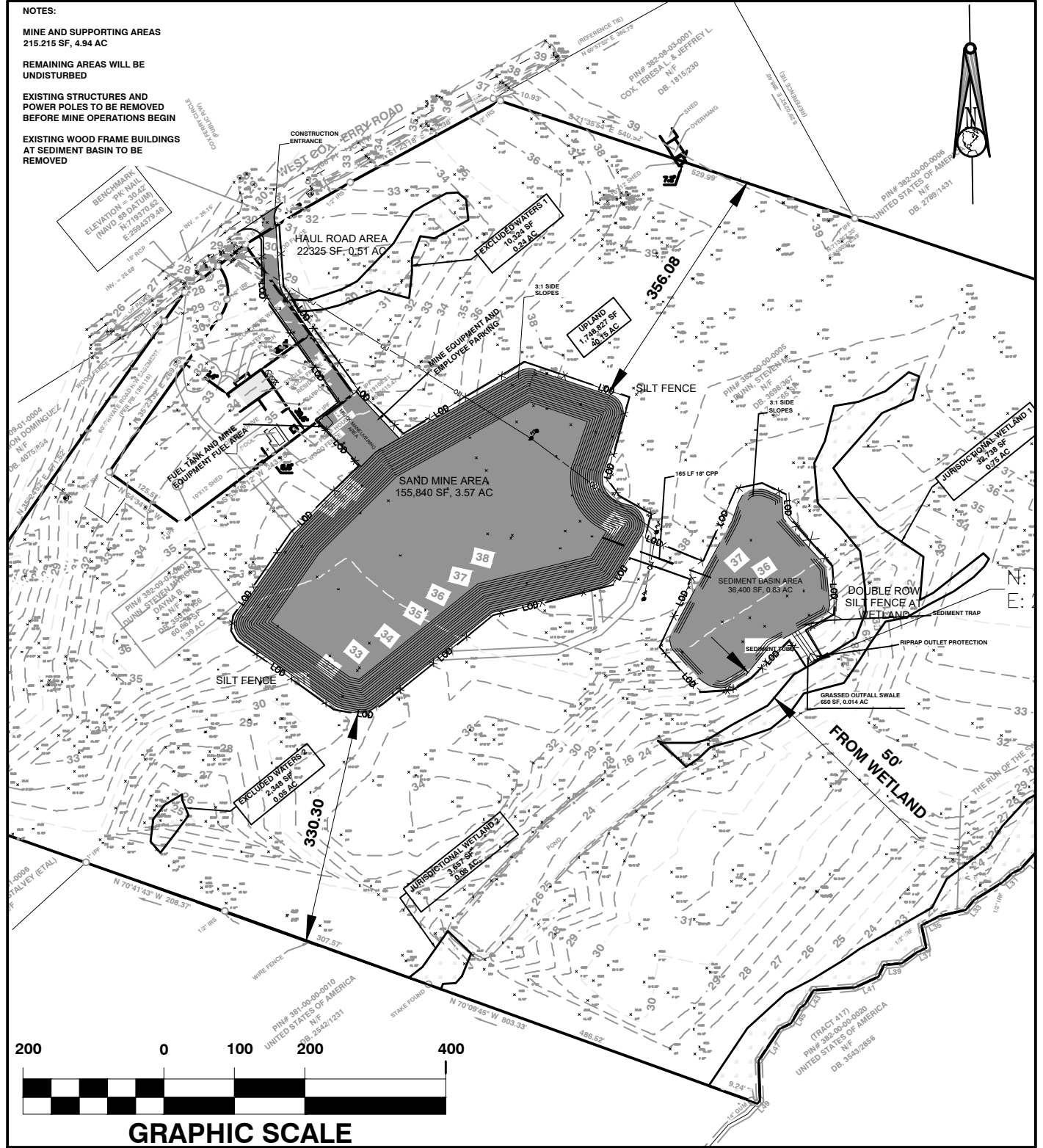
**NOTES:**

MINE AND SUPPORTING AREAS  
215,215 SF, 4.94 AC

REMAINING AREAS WILL BE  
UNDISTURBED

EXISTING STRUCTURES AND  
POWER POLES TO BE REMOVED  
BEFORE MINE OPERATIONS BEGIN

EXISTING WOOD FRAME BUILDINGS  
AT SEDIMENT BASIN TO BE  
REMOVED



# WEST COX FERRY ROAD SAND MINE

Mine Map  
GRADING PLAN

CLIENT:  
MOSS PARK PARTNERS LLC

LOCATION: CONWAY, SC  
DATE: 12/13/2022  
JOB NUMBER: 211204.05

DRAWN BY: MHD  
REVIEWED BY: TEG

SHEET: 2  
SCALE: 1" = 200'



planning and design consultants

11655 HIGHWAY 707  
MURRELLS INLET, SC 29576  
843.651.7900  
(FAX) 843.651.7903  
www.earthworksgroup.com

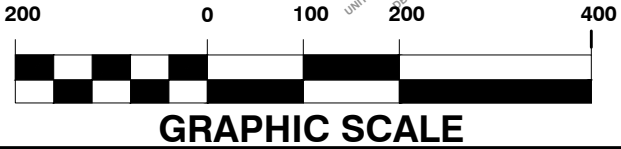
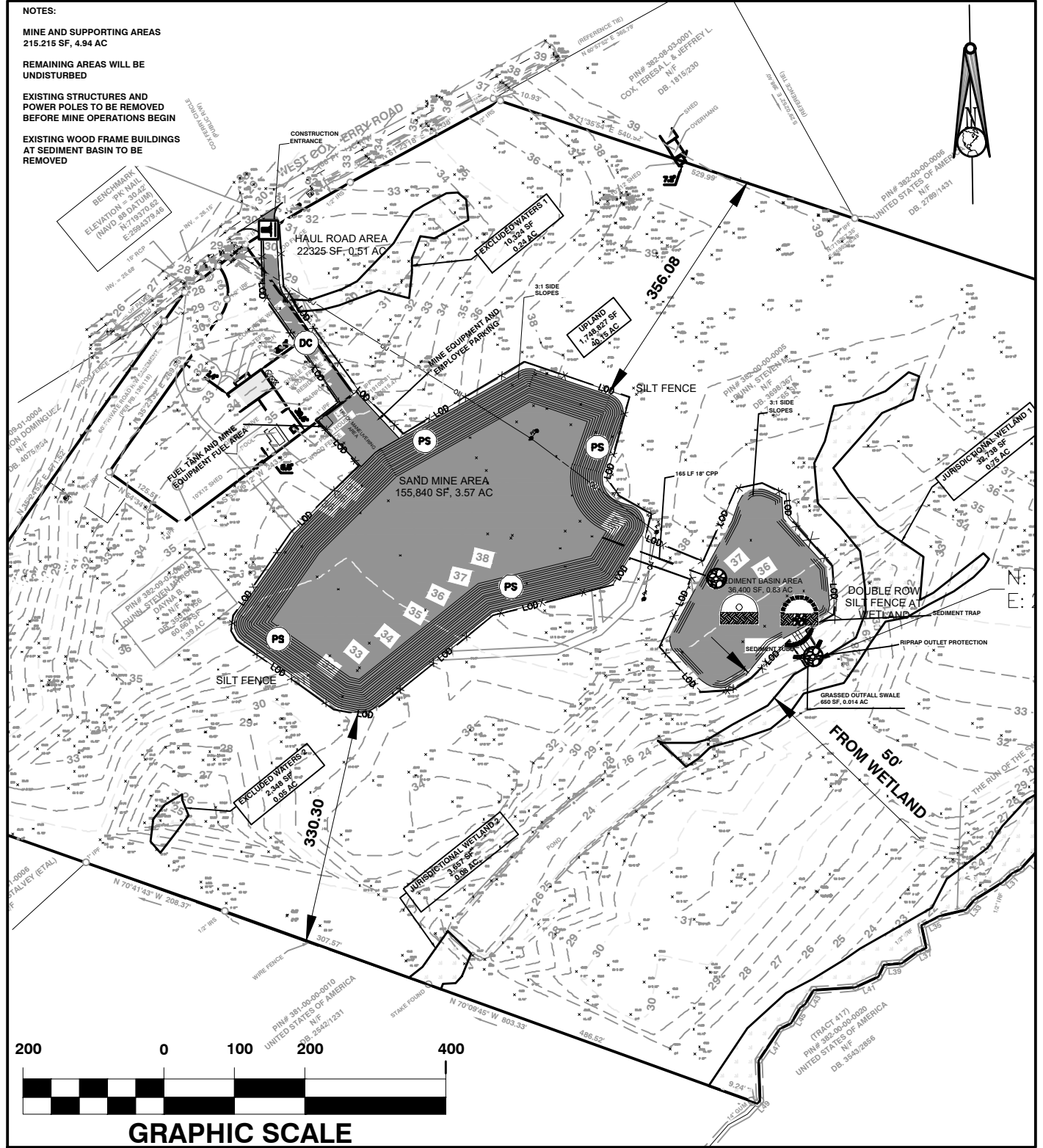
**NOTES:**

MINE AND SUPPORTING AREAS  
215,215 SF, 4.94 AC

REMAINING AREAS WILL BE  
UNDISTURBED

EXISTING STRUCTURES AND  
POWER POLES TO BE REMOVED  
BEFORE MINE OPERATIONS BEGIN

EXISTING WOOD FRAME BUILDINGS  
AT SEDIMENT BASIN TO BE  
REMOVED



# WEST COX FERRY ROAD SAND MINE

Mine Map  
SEDIMENT / EROSION CONTROL PLAN

CLIENT:  
MOSS PARK PARTNERS LLC

LOCATION: CONWAY, SC  
DATE: 12/13/2022  
JOB NUMBER: 211204.05

DRAWN BY: MHD  
REVIEWED BY: TEG

SHEET: 3  
SCALE: 1" = 200'



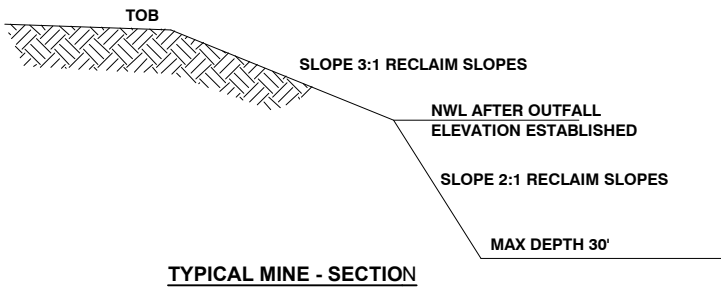
11655 HIGHWAY 707  
MURRELLS INLET, SC 29576  
843.651.7900  
(FAX) 843.651.7903  
www.earthworksgroup.com

**CONSTRUCTION SEQUENCE**

1. INSTALL CONSTRUCTION ENTRANCE
2. CLEAR AND GRUB AREAS FOR PERIMETER CONTROLS
3. INSTALL SEDIMENT BASINS/CHECK DAMS/SILT FENCE, AND PROVIDE IMMEDIATE STABILIZATION ONCE GRADED
4. COMPLETE SITE CLEARING & GRUBBING
5. EXCAVATION OF MINE AS REQUIRED
6. GRADING FOR REMAINDER OF SITE
7. FINAL GRADING, LANDSCAPING AND STABILIZATION
8. REMOVAL OF SEDIMENT CONTROLS WITHIN 30 DAYS OF FINAL STABILIZATION



<b>EROSION CONTROL LEGEND</b>	
<u>DESCRIPTION</u>	<u>PLAN SYMBOL</u>
SILT FENCE	
CLEARING LIMITS	— CL —
LIMITS OF DISTURBANCE	
TEMPORARY SEEDING	
PERMANENT SEEDING	
RIPRAP	
DUST CONTROL	
SEDIMENT BASIN	
SEDIMENT TRAP	
SEDIMENT TUBE	
STABILIZED CONSTRUCTION ENTRANCE	



**GRAPHIC SCALE**

**WEST COX FERRY ROAD SAND MINE**

Mine Map  
DETAILS

CLIENT:  
**MOSS PARK PARTNERS LLC**

LOCATION: CONWAY, SC  
DATE: 12/13/2022  
JOB NUMBER: 211204.05

DRAWN BY: MHD  
REVIEWED BY: TEG

SHEET: 4  
SCALE: #####

**EARTHWORKS**

planning and design consultants

11655 HIGHWAY 707  
MURRELLS INLET, SC 29576  
843.651.7900  
(FAX) 843.651.7903  
[www.earthworksgroup.com](http://www.earthworksgroup.com)

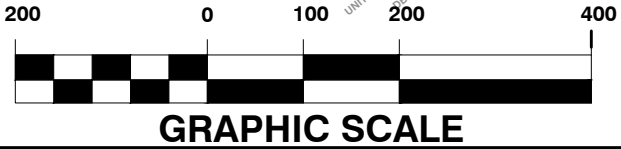
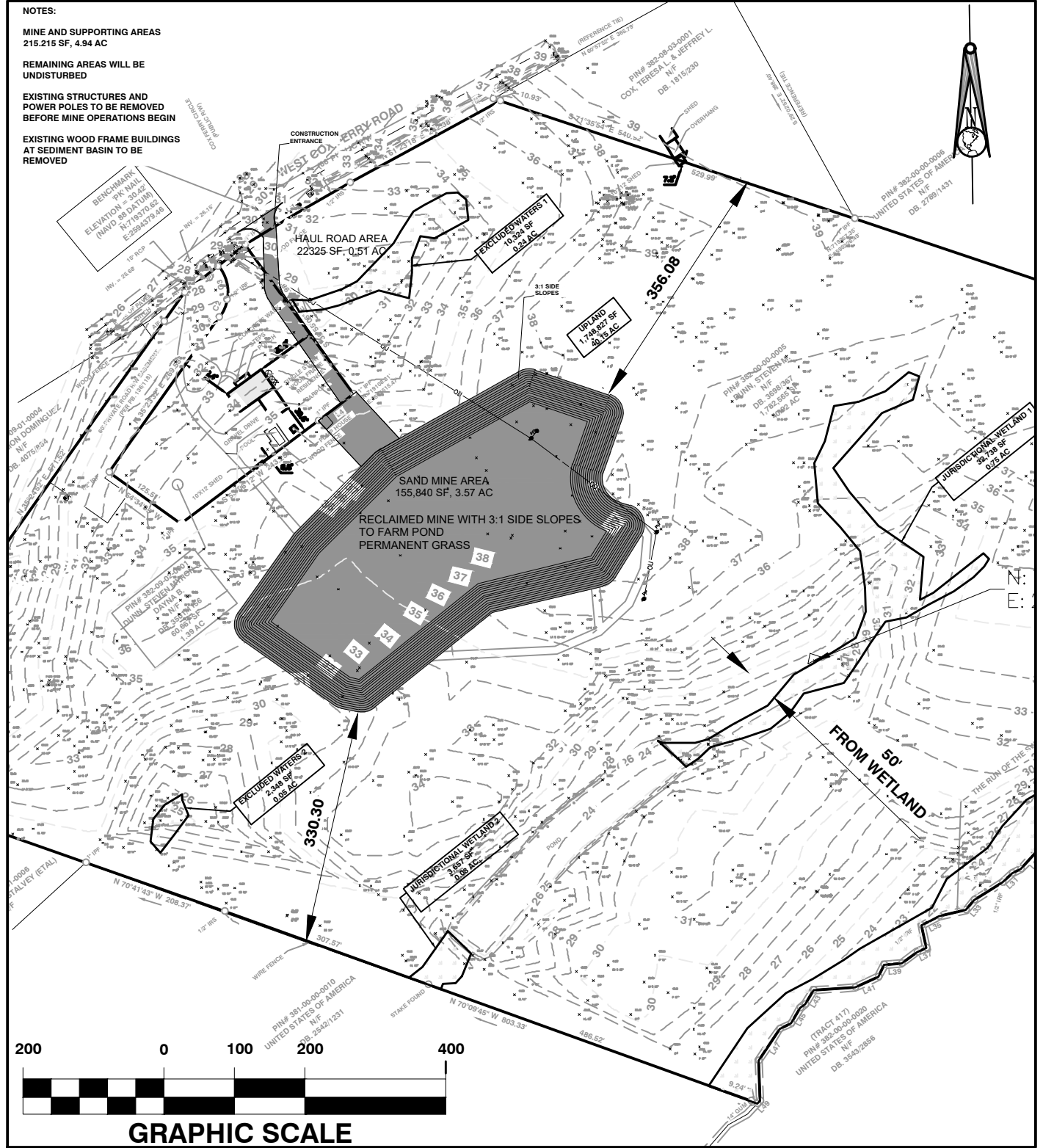
**NOTES:**

**MINE AND SUPPORTING AREAS**  
215,215 SF, 4.94 AC

**REMAINING AREAS WILL BE**  
**UNDISTURBED**

**EXISTING STRUCTURES AND**  
**POWER POLES TO BE REMOVED**  
**BEFORE MINE OPERATIONS BEGIN**

**EXISTING WOOD FRAME BUILDINGS**  
**AT SEDIMENT BASIN TO BE**  
**REMOVED**



**WEST COX FERRY ROAD SAND MINE**

Mine Map  
**RECLAMATION PLAN**

CLIENT:  
**MOSS PARK PARTNERS LLC**

LOCATION: CONWAY, SC  
DATE: 12/13/2022  
JOB NUMBER: 211204.05

DRAWN BY: MHD  
REVIEWED BY: TEG

SHEET: 5  
SCALE: 1" = 200'

**EARTHWORKS**  
planning and design consultants

11655 HIGHWAY 707  
MURRELLS INLET, SC 29576  
843.651.7900  
(FAX) 843.651.7903  
www.earthworksgroup.com