



Westinghouse Electric Company  
Nuclear Fuel  
Columbia Fuel Fabrication Facility  
5801 Bluff Road  
Hopkins, South Carolina 29061  
USA

SCDHEC, BLWM  
Kim Kuhn  
2600 Bull Street  
Columbia, SC 29201

Direct tel: 803.647.3609  
Direct fax: 803.695.3964  
e-mail: batesrl@westinghouse.com  
Your ref:  
Our ref: LTR-RAC-23-48

July 18, 2023

Subject: Middle Ditch Soil/Sediment Sampling Work Plan

Mrs. Kuhn:

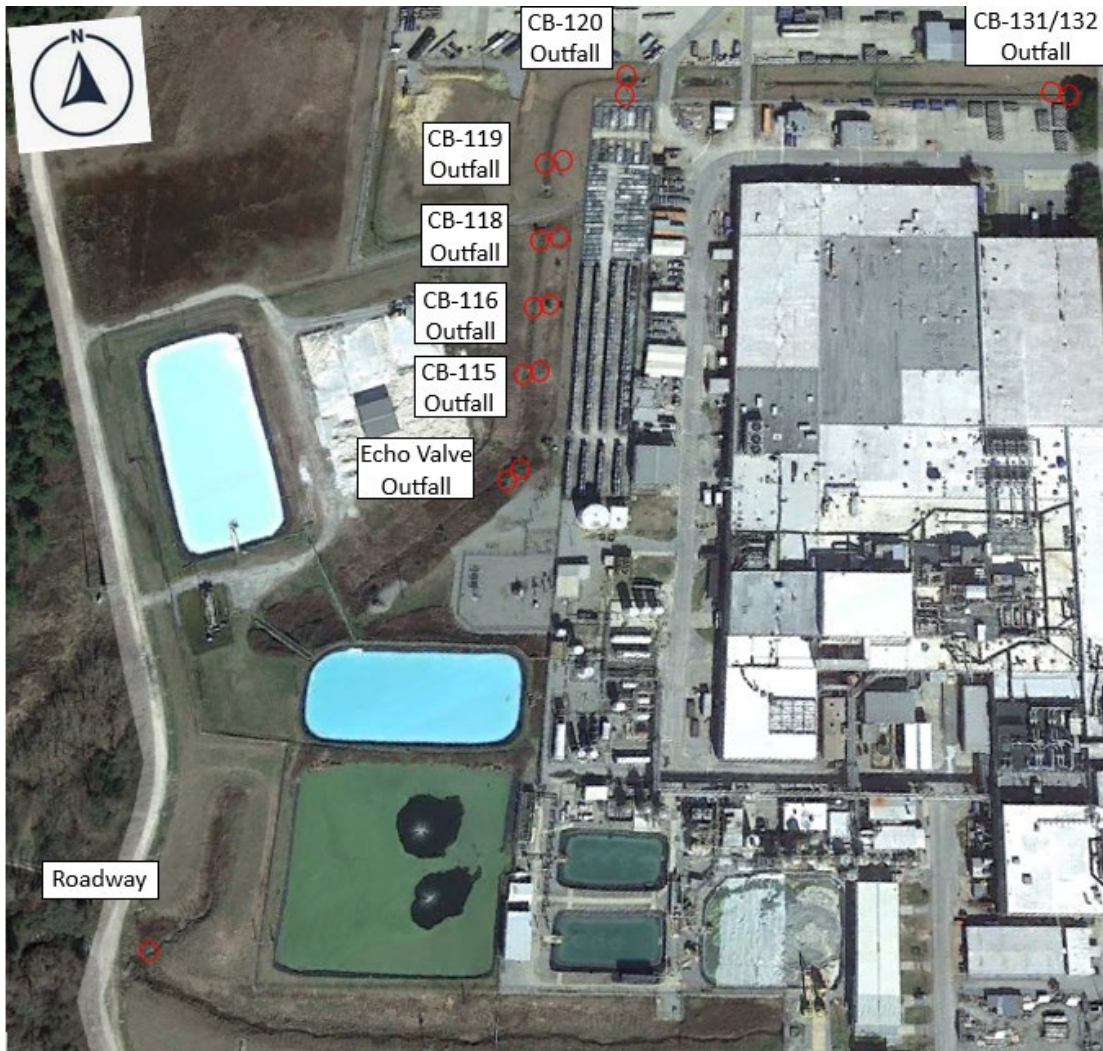
Westinghouse has prepared the following general work plan to complete supplemental investigation of legacy impacts in a section of the Middle Ditch bounded by the outfall of storm drains CB-131/132 to Control Valve Echo (See diagram below). The historical impacts in this ditch are evaluated in the Final Remedial Investigation Report approved by the Department in March 2023. This data will assist in the Feasibility Study being completed in accordance with Item 7 of Consent Agreement 19-02-HW.

#### **WORKPLAN: Sampling Middle Ditch**

Westinghouse will complete direct radiological surveys of the surface soil in the sampling areas identified in Figure 1 below. If applicable, surface soil above background levels will be removed in accordance with the site's remediation procedure and sent to an authorized disposal facility.

A composite sample of the top 8 inches of soil/sediment will be collected in accordance with the site's sampling procedure. Samples will be taken where storm water catch basins ("CB") 131/132, 120, 119, 118, 116, 115, and Control Valve Echo's outfall enter the ditch and at the corresponding locations near the ditch bottom. An additional sample will be taken downstream near the roadway prior to Charlie Valve. The samples will be sent to a state-certified laboratory and tested for the site Contaminants of Potential Concern (COPCs): VOCs, Uranium (isotopic analysis), Tc-99, Nitrate and Fluoride. Additionally, Westinghouse will sample for Ammonia and Nickel based on historical activities performed in operable units near these areas. Westinghouse will submit the results to the Department, including a proposal for the next steps to be performed.

Figure 1: Sampling Locations



Respectfully,

A handwritten signature in black ink, appearing to read 'Ray Bates'.

Ray Bates  
Environmental Recovery Manager  
Westinghouse Electric Company, CFFF  
803.351.6629 (m)

CC: Nancy Parr, Environmental Manager  
Diana Joyner, Principal Environmental Engineer  
ENOVIA Records