

**U.S. Environmental Protection Agency  
Burlington Industries Cheraw  
Cheraw, South Carolina  
Fact Sheet**

**Number 3****January 2018**

## **Introduction**

This fact sheet contains information about the Burlington Industries Cheraw site (the Site). The United States Environmental Protection Agency is committed to engaging the community potentially affected by the past activities at the Site. This fact sheet provides a description of the Site, as well as the planned future activities to address environmental conditions. Through this fact sheet, the EPA is also notifying the community that it is proposing to include the Burlington Industries Cheraw site on the National Priorities List. The community is invited to a public meeting to obtain information about the Site.

### **Public Meeting Scheduled**

A public meeting to discuss EPA activities at the Burlington Industries Cheraw site has been scheduled.

**Tuesday, February 20, 2018  
From 6:00 pm until 8:00 pm**

**Long Middle School  
1010 West Greene Street  
Cheraw, South Carolina 29520**

For questions or more information on this meeting contact Stephanie Y. Brown (see page 4).

## **Site Location and Description**

The Burlington Industries Cheraw site consists of the former Burlington Industries, Inc. facility property, 3.2 miles of surface water drainage from the facility to the Great Pee Dee River and a number of adjacent parcels along the surface water pathway. Part of the former Burlington Industries, Inc. facility is currently owned by Highland Industries, Inc. (a division of Takata Corporation). Adjacent properties to the surface water drainage corridor include 37 occupied private residences and public lands. Contained within the public land tracts is Huckleberry Park (a 2.7-acre public park with playground equipment for children).

During the South Carolina Department of Health and Environmental Control's (DHEC's) investigation of a residential property, polychlorinated biphenyls (PCBs) were found in surface soils. This residential property, along with other area parcels, were formerly owned by Burlington Industries; one currently undeveloped property was used by Burlington for drying wastewater solids. PCBs are toxic and persistent contaminants that pose a significant threat to human health and the environment. Subsequent sampling events found PCBs in surface and subsurface soils of adjacent residential lots, the former Burlington Industries facility property, sediments along the surface water corridor, and public and private properties downstream. Based on the high concentrations of PCBs at the Site, DHEC requested that the EPA Region 4 Emergency Response, Removal and Prevention Branch (ERRPB) conduct a Removal Site Evaluation (RSE).

## Previous Investigations

The EPA signed an action memorandum on April 25, 2017, to begin a removal action at the Site. The action addressed contaminated surface soils at 14 residential properties. The EPA has signed an Administrative Order On Consent (AOC) with Highland Industries. The AOC is for the performance of removal action work addressing PCBs on Highland's property, in a limited section of the adjacent storm water ditch and in Huckleberry Park. Details of the work will be provided to the public prior to the initiation of activities.

Soils which exceeded EPA's cleanup criteria were removed and transported to an approved disposal facility. Clean soil was returned to residential properties and vegetative ground cover was added to prevent erosion.

Additionally, the removal action addressed play structures and sand from Huckleberry Park, which has been closed since August of 2016. Initial actions in the park were targeted to support protective measures (such as limiting exposure to contaminated sand through visible barriers and removal of all playground equipment). The need for any further cleanup work in the park will be evaluated and communicated to the Town of Cheraw and the surrounding community.

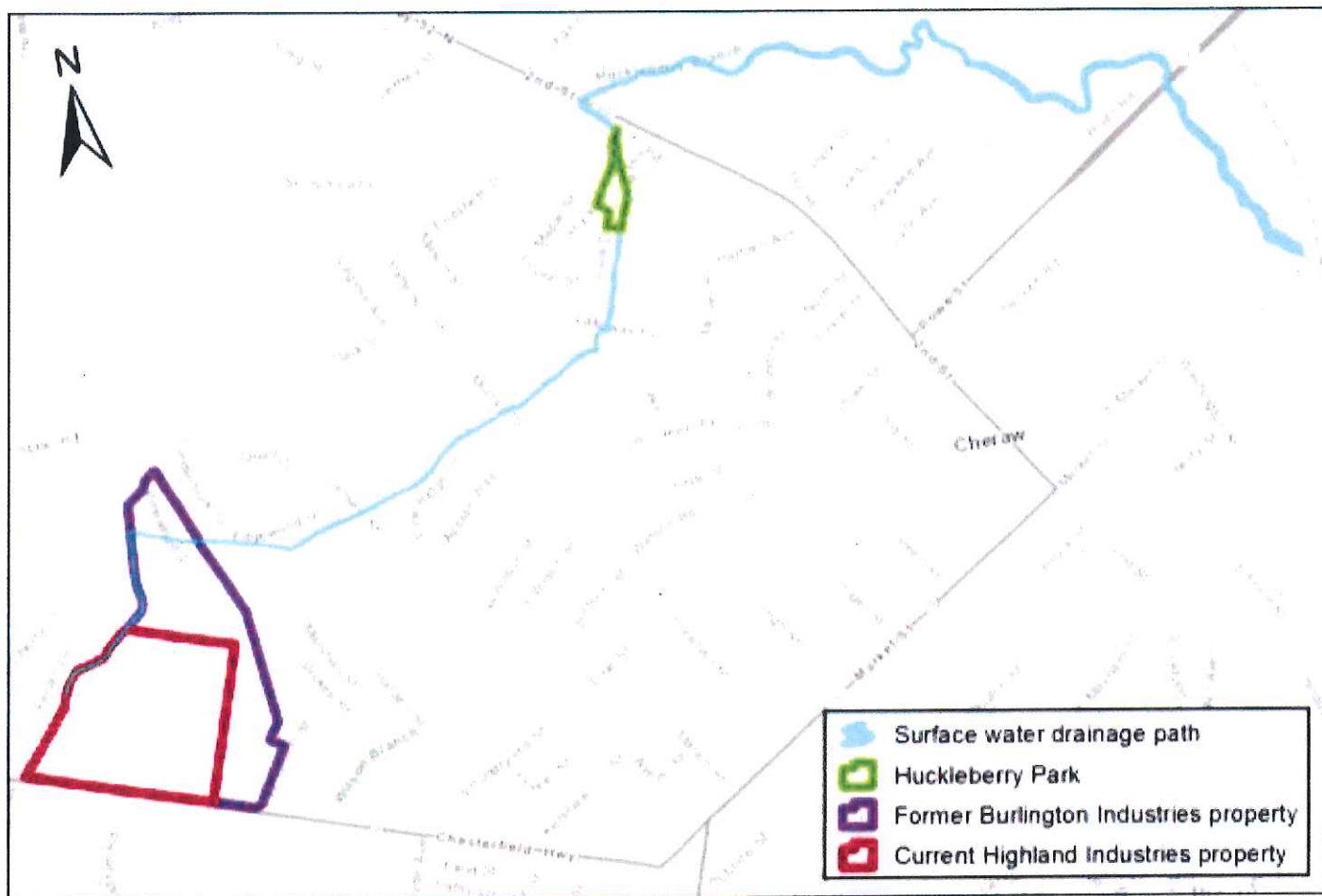
## Future Activities

The EPA has determined that the Burlington Industries Cheraw site qualifies for the next step in the Superfund Program -- inclusion on EPA's National Priorities List (NPL). Superfund is the EPA program that addresses hazardous waste sites like Burlington Industries Cheraw. The NPL is a list of serious uncontrolled or abandoned hazardous waste sites identified for investigation and comprehensive long-term cleanup. The NPL guides EPA in determining which sites warrant further assessment of the nature and extent of public health and environmental risks. Adding the Site to the priority list will allow EPA to use Superfund authorities and additional resources to determine the extent of contamination along the surface water pathway, including whether additional properties are impacted by PCBs, and to perform additional cleanup if necessary. In consultation with DHEC, EPA proposes to add Burlington Industries Cheraw site to the NPL.

As indicated on page 1, on **Tuesday, February 20, 2018 from 6:00 pm until 8:00 pm**, EPA will hold a public meeting at **Long Middle School, 1010 West Greene Street, Cheraw, South Carolina 29520**. During the public meeting, the EPA will provide information to the community about assessment and cleanup activities conducted to date at Burlington Industries Cheraw site, and provide information on the next steps for the Site. Personnel from EPA and DHEC will be present at the public meeting to provide the community with an overview of the EPA Superfund cleanup program, answer questions about Burlington Industries Cheraw site, and the NPL process.



<https://www.epa.gov/superfund/burlington-cheraw>



## Public Comment

Information that EPA used to support the NPL proposal is available for public review and comment. EPA will consider public comments before making a final decision about adding the site to the NPL. Materials compiled by the EPA to propose the Burlington Industries Cheraw site to the NPL can be obtained in several ways:

1. Online at [www.regulations.gov](http://www.regulations.gov). In the search bar, type in the docket number for the Burlington Industries Cheraw site: EPA-HQ-OLEM-2017-0609.
2. Contact EPA Region 4's NPL Coordinator, Cathy Amoroso (contact information below), to have an electronic copy mailed to you. You may also call Cathy Amoroso to make an appointment to view electronic copies at the EPA Regional Library in the SNAFC, 61 Forsyth Street, SW, Atlanta, Georgia 30303.
3. Visit the local information repository to view the materials in person. The information repository is located at the **Matheson Memorial Library 227 Huger Street, Cheraw, South Carolina 29520**

The public has 60 days to comment on the proposed listing of the Burlington Industries Cheraw site to the NPL. Submit your comments from **January 18 to March 19, 2018**, at [www.regulations.gov](http://www.regulations.gov). Follow the online instructions for submitting comments. All comments **MUST** include the docket number EPA-HQ-OLEM-2017-0609. Comments can also be mailed to: U.S. Environmental Protection Agency; EPA Superfund Docket Center; Mail Code 28221T; 1200 Pennsylvania Avenue, NW; Washington, DC 20460.

## FOR MORE INFORMATION

**EPA Remedial Project Manager**

Jeff Crowley 404-562-9587  
Crowley.Jeffery@epa.gov

**EPA National Priorities List Coordinator**

Cathy Amoroso 404-562-8637  
Amoroso.Cathy@epa.gov

**EPA Community Involvement Coordinator**

Stephanie Brown  
404-562-8450  
Brown.StephanieY@epa.gov

**Information Repository**

Matheson Memorial Library  
227 Huger Street  
Cheraw, South Carolina 29520