

Proposed Expansion of the Horry County Class 2 Landfill **PUBLIC HEARING**

- ✓ To avoid echoing or feedback, all lines will be muted
- ✓ At the end of the presentation, we will unmute and call upon those who signed up to make oral comments
- ✓ This virtual meeting will be recorded and posted on our webpage.

Option to Call In

If you are experiencing audio problems, join the virtual meeting by phone:

Phone number: **(864) 558-7311**

Access Code: **550108917#**



Exits the meeting. (If you accidentally exit the meeting, you can rejoin.)



Proposed Expansion of the Horry County Class 2 Landfill

PUBLIC HEARING



Agenda

- Gathering Time & Instructions for Participating Remotely
- Introductions & Opening Remarks
- Overview of Proposed Expansion
- Public Comments
- Closing Remarks
- Hearing Adjourned

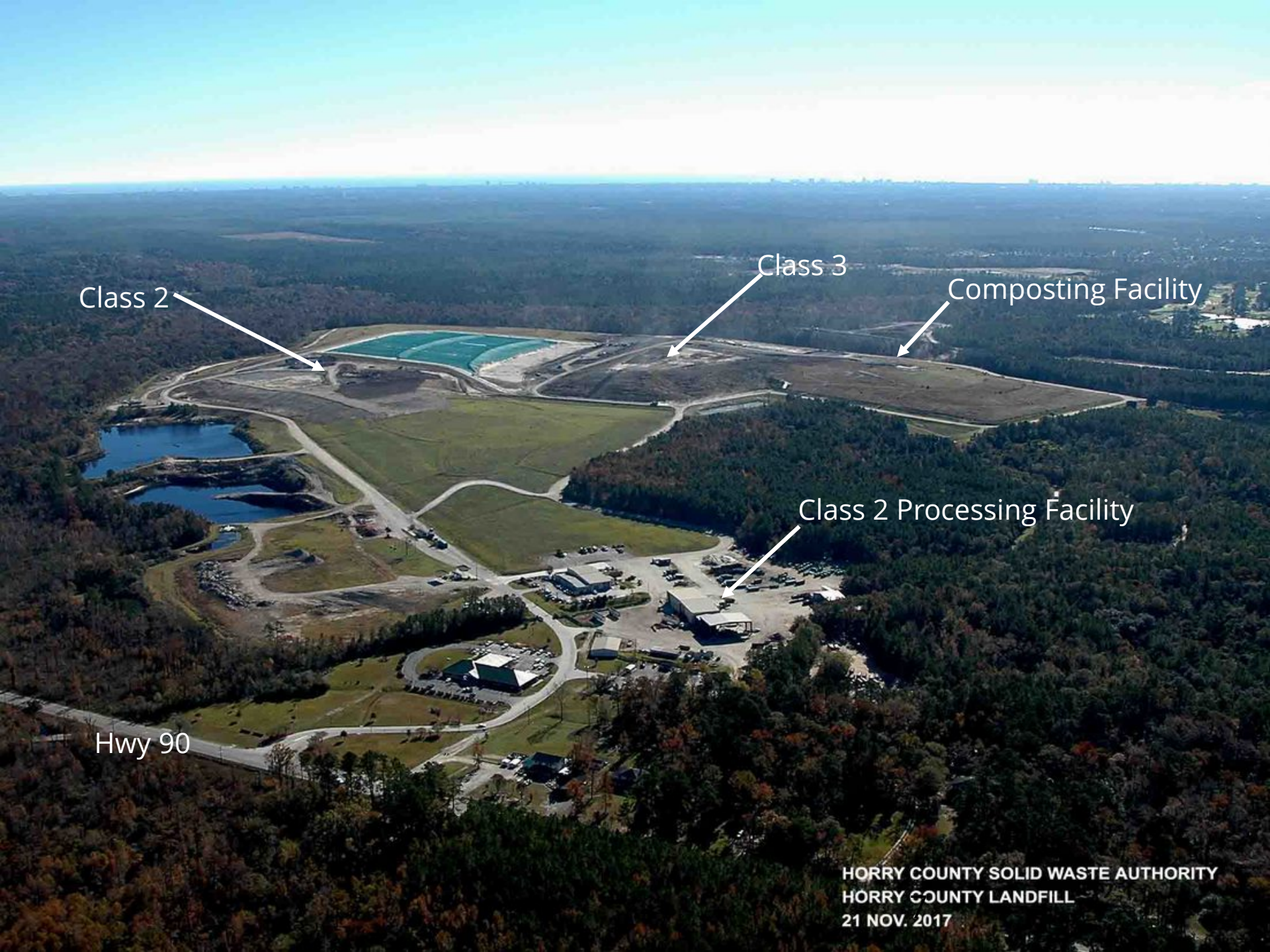
An informal Question & Answer Session will be held immediately following the public hearing.

Tonight's Topics

- General Information
- Acceptable and Unacceptable Wastes
- Buffer and Design Requirements
- Groundwater Monitoring
- Permitting Process
- Next Steps

General Information

- Horry County Solid Waste Authority
 - 1886 SC Highway 90 in Conway, SC
- Class 3 Landfill
- **Class 2 Landfill**
- Class 2 Processing Facility
- Composting Facility



Class 2

Class 3

Composting Facility

Class 2 Processing Facility

Hwy 90

HORRY COUNTY SOLID WASTE AUTHORITY
HORRY COUNTY LANDFILL
21 NOV. 2017

Class 2 Landfill

	Currently Permitted	Proposed Expansion
Footprint	84 Acres	101.3 Acres
Storage Capacity	3,700,000 cubic yards	5,800,000 cubic yards
Annual Disposal Rate	250,000 tons per year	250,000 tons per year

Proposed Expansion

- Located within the facility's existing 767.83 acre landfill boundary
- 20.6 acres of the proposed expansion currently has no waste
- A portion is proposed to be in an area previously used for soil borrow



HIGHWAY 60

FACILITY ENTRANCE



UNLINED MSWLF CLOSURE AREA

CLASS 2 HORIZONTAL EXPANSION

FACILITY BOUNDARY

CLASS 2 ACTIVE AREA

CLASS 3 CLOSURE AREA

CLASS 3 ACTIVE AREA

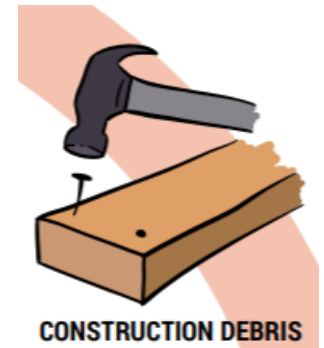
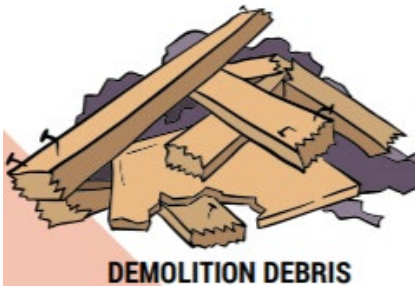
CLASS 2 VERTICAL EXPANSION CLOSURE AREA

FACILITY BOUNDARY

Class 2 Acceptable Wastes

Includes (but not limited to):

- Asphalt, concrete, bricks, and C&D debris
- Land-clearing Debris and Wood
- Box Springs and Mattresses
- Packaging Materials
- Glass
- Shingles



Class 2 Unacceptable Wastes

Includes (but not limited to):

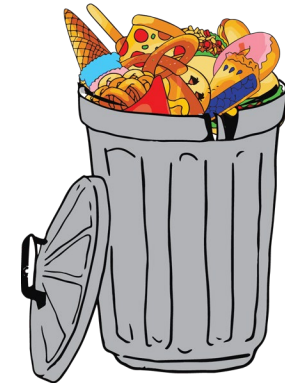
- PCBs
- Petroleum Contaminated Waste



Infectious Waste



Hazardous Waste



Municipal Solid
Waste (MSW)
Household Trash

Buffer Requirements

The proposed footprint is required to be:

- 1,000 feet from residences, schools, churches, hospitals, day-cares, and public parks
- 200 feet from any surface water
- 100 feet from property line
- 100 feet from any drinking water well
- 50 feet from any utility easement/rights-of-way

Design Requirements

- There must be 2 feet of separation between the groundwater table and base grade of the landfill (after settlement)
- Must have a Stormwater System to handle the runoff generated by a 25-yr, 24-hr storm event
 - During active life and post-closure period of the landfill

Groundwater Monitoring

- 29 Groundwater Monitoring Wells
- Required to sample and submit analytical data to DHEC twice a year
- No contaminants have been found above a groundwater protection standard (MCL, RSL, or PQL)

Permitting Process

- Phase 1: Siting the landfill

March 2019	Phase 1 documents received
May 2019	Notice of Draft Determination
August 2019	Phase 1 approved

- Phase 2: Technical application and review

December 16, 2019	Technical Application received
May 7, 2020	Notice of Draft Permit
June 30, 2020	DHEC public comment period closes

Next Steps

- DHEC will review all comments received
- DHEC will make a final decision and provide a written response to all comments
- Final decision date begins 15-day appeal period

How to Comment

Submit comments by mail or email through

June 30, 2020 to:

Justin Koon
DHEC/BLWM
2600 Bull Street
Columbia, SC 29201
koonjt@dhec.sc.gov

Application and draft permit can be found at:

www.scdhec.gov/HorryCountySWA



DHEC Contacts

Central office

Solid Waste Permitting

Attn: Sheila Watts

2600 Bull St.

Columbia, SC 29201

(803) 898-2207

wattssg@dhec.sc.gov

Local office

Myrtle Beach Regional Office

Attn: Katherine Mann

927 Shine Avenue

Myrtle Beach, SC 29577-1522

(843) 238-4378

mannka@dhec.sc.gov

www.scdhec.gov/HorryCountySWA



Proposed Expansion of Horry County Class 2 Landfill PUBLIC HEARING

- ✓ Commenters will be called on in random order
- ✓ Please state your first and last name
- ✓ How to unmute your line:



Muted
(no one in the meeting
can hear you)



Unmuted
(everyone in the
meeting can hear you)



Call in option

Phone number: **(864) 558-7311** | Access Code: **550108917#**

How to Comment

Submit comments by mail or email through

June 30, 2020 to:

Justin Koon
DHEC/BLWM
2600 Bull Street
Columbia, SC 29201
koonjt@dhec.sc.gov

Application and draft permit can be found at:

www.scdhec.gov/HorryCountySWA



Contact Us
www.scdhec.gov
(803) 898-DHEC (3432)

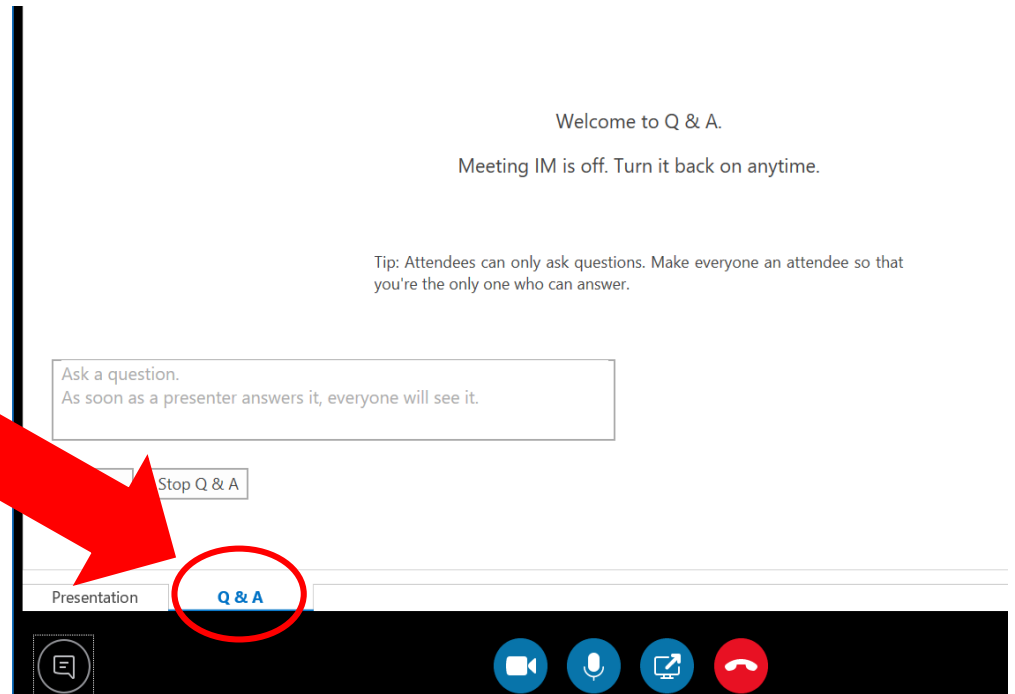
Stay Connected



Question & Answer Session

You can verbally ask questions using your computer's microphone or your phone.

You can also use the Q & A Board to enter your questions.



Call in option

Phone number: (864) 558-7311 | Access Code: 550108917#

Question & Answer Session

- ✓ Will include oral and written questions
- ✓ Unmute to indicate you would like to speak
- ✓ Unmuted lines will be called on to speak



Muted
(no one in the meeting
can hear you)



Unmuted
(everyone in the
meeting can hear you)



Call in option

Phone number: (864) 558-7311 | Access Code: 550108917#

DHEC Staff

Bureau of Land & Waste Management Division of Mining & Solid Waste Management

Juli Blalock Division Director

Justin Koon Section Manager

Sheila Watts, PE Project Engineer

Larry Leblang Project Hydrogeologist

Bureau of Environmental Health Services Myrtle Beach Office

Matt Maxwell Area Director

Shawn Williams Office Manager

Katherine Mann Solid Waste Inspector



Contact Us
www.scdhec.gov
(803) 898-DHEC (3432)

Stay Connected

