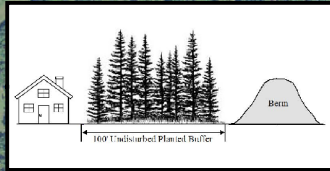


**THE APPROXIMATE WETLAND BOUNDARIES DEPICTED ON THIS MAP ARE NOT FINAL AND ARE SUBJECT TO CHANGE BY THE U.S. ARMY CORPS OF ENGINEERS.**

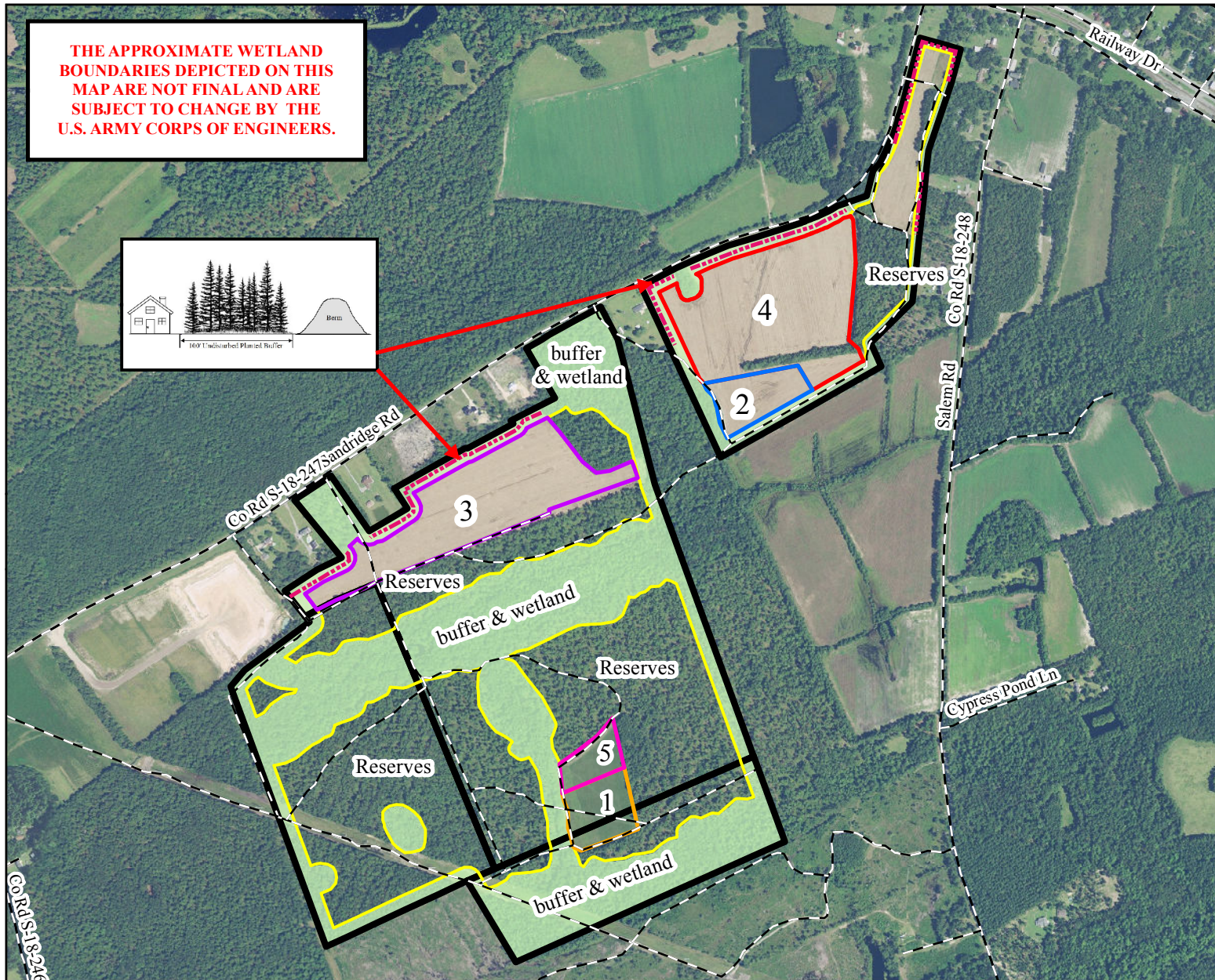


**MINE SEGMENTS AND FUTURE RESERVES MAP**

**APPLICANT:  
SANDRIDGE HOLDINGS, LLC**

**OWNER:  
SANDRIDGE HOLDINGS, LLC**

PREPARED BY:  
Stephen Bennett  
SABINE & WATERS, INC.  
July 30, 2019



■	PERMIT ACRES	318.0 acres
	AFFECTED ACRES	62.3 acres
■	Segment 1 (GP1-002280)	5.0
■	Segment 2 (GP1-002281)	5.0
■	Segment 3	22.3
■	Segment 4	27.0
■	Segment 5	3.0
■	FUTURE RESERVES	129.8 acres
■	BUFFER AREA (buffers, wetlands)	125.9 acres

**LEGEND**

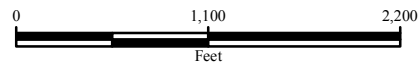
- 100FT PLANTED BUFFER & BERM
- ROADS

EXTERNAL SOURCES: DORCHESTER COUNTY GIS PARCELS, NAIP 2017 TRUE COLOR AERIAL

Created By: Stephen Bennett  
Date Created: July 30, 2019  
Copyright 2019 Sabine & Waters, Inc.  
Environmental Land Management Consultants  
P.O. Box 1072 Summerville, SC 29484  
843.871.5383 (phone) 843.871.2050 (fax)  
R:\csd\st\sandrige\_land\_holdings\_mining\_mapping\segments\_and\_future\_reserves.mxd

Disclaimer: This map is a graphic representation of data obtained from various sources. All efforts have been made to warrant the accuracy of this map. However, Sabine & Waters, Inc. disclaims all responsibility and liability for the use of this map.

**MINE SEGMENTS AND FUTURE RESERVES MAP  
PINELAND MINE  
DORCHESTER COUNTY, SC**



**REVISED: 11/4/2019**

**LOCATION MAP**

**APPLICANT:**  
**SANDRIDGE ROAD HOLDINGS, LLC**

**OWNER:**  
**SANDRIDGE ROAD HOLDINGS, LLC**

**PREPARED BY:**  
 Stephen Bennett  
 SABINE & WATERS, INC.  
 September 17, 2019

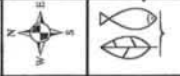
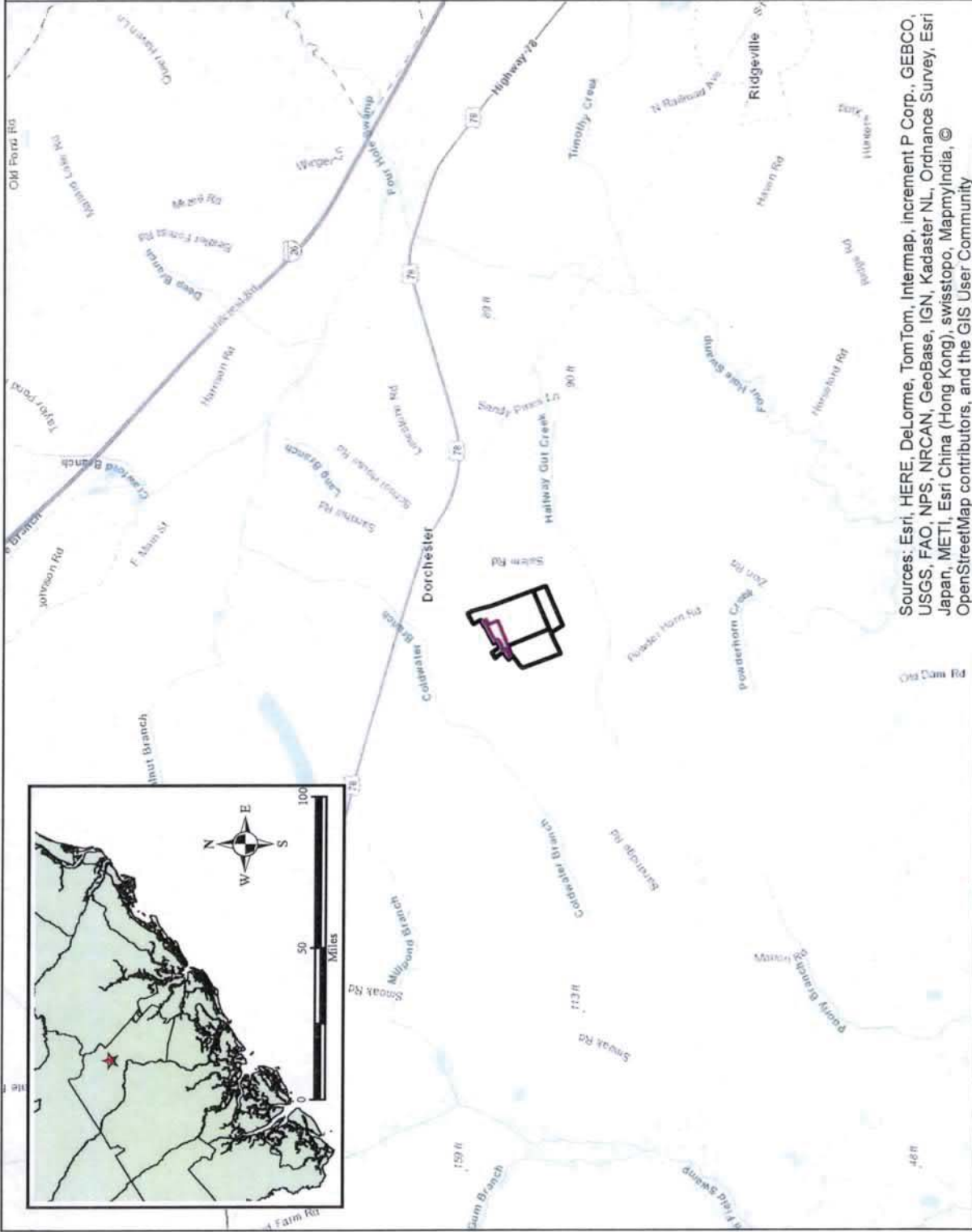
Long: -80.413336 W  
 Lat: 33.130345 N

**LEGEND**

□ PROPERTY BOUNDARY: 256 AC

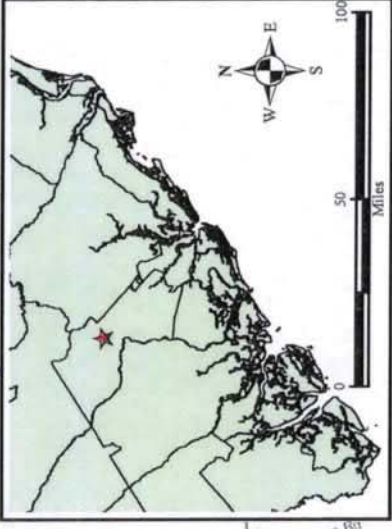
□ PIT FOOTPRINT: 17.3 AC

**REVISED: 9/17/2019**



**LOCATION MAP**  
**PINELAND INDIVIDUAL MINE SEGMENT 1**  
**DORCHESTER COUNTY, SC**

Sources: Esri, HERE, DeLorme, TomTom, Intermap, increment P Corp., GEBCO, USGS, FAO, NPS, NRCAN, GeoBase, IGN, Kadaster NL, Ordnance Survey, Esri Japan, METI, Esri China (Hong Kong), swisstopo, MapmyIndia, © OpenStreetMap contributors, and the GIS User Community



**EXTERNAL SOURCES:** ESRI ONLINE TOPO BASEMAP; DORCHESTER COUNTY GIS DATA;  
 Created By: Stephen Bennett 2019  
 Copyright 2019 Sabine & Waters, Inc.  
 Environmental Land Management Consultants  
 843.871.5383 (phone) 843.871.2050 (fax)  
 P:\cadd\transfridge road holding\mim1\img\map\segment1\locat1.dwg  
 Disclaimer: This map is a graphic representation of data obtained from various sources. All efforts have been made to warrant the accuracy of this liability for the best of our ability.

**NOI MAP**

**APPLICANT:**  
SANDRIDGE ROAD  
HOLDINGS, LLC

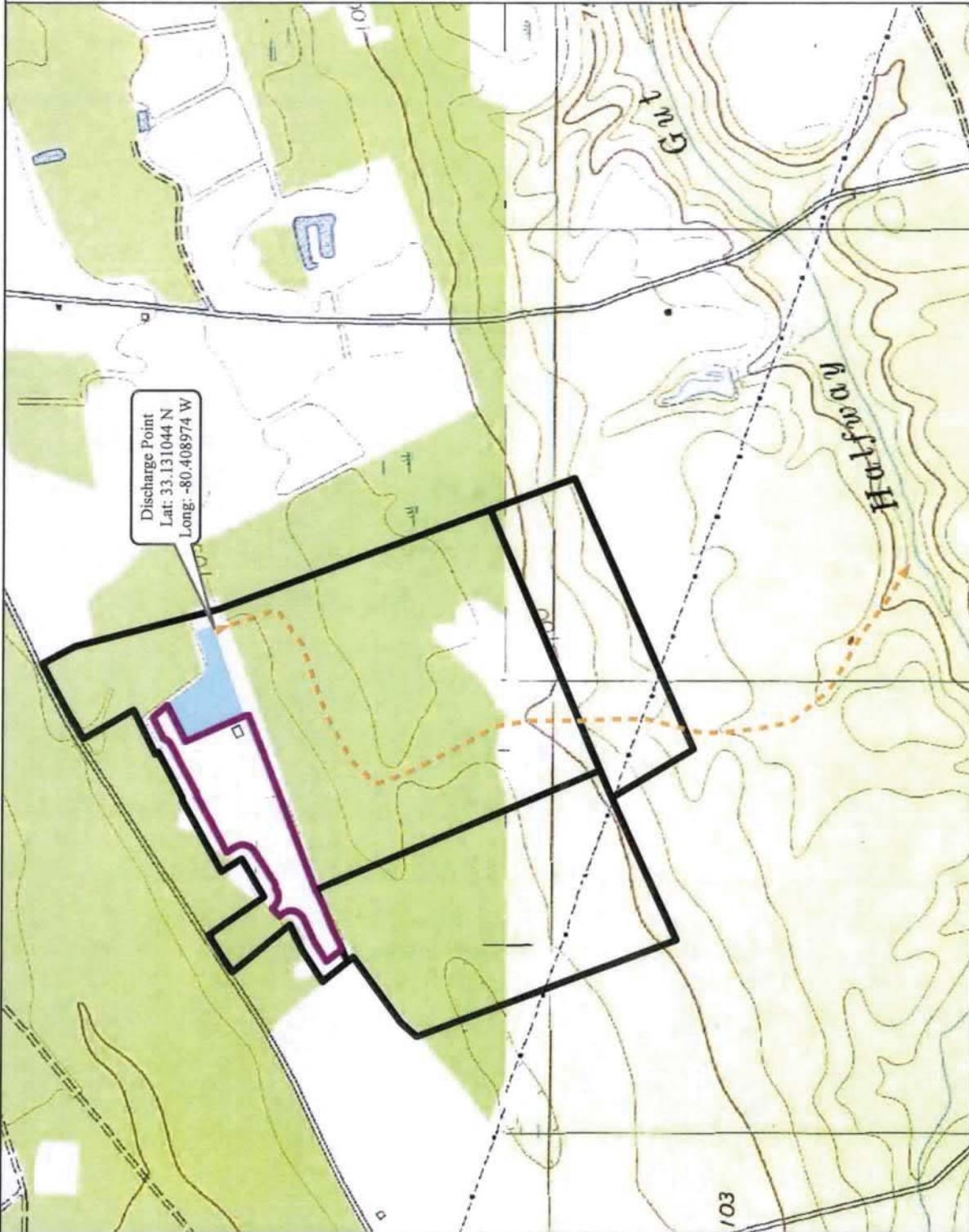
**OWNER:**  
SANDRIDGE ROAD  
HOLDINGS, LLC

**PREPARED BY:**  
Stephen Bennett  
SABINE & WATERS, INC.  
September 17, 2019

**LEGEND**

- PROPERTY BOUNDARY: 256 AC
- PIT FOOTPRINT: 17.3 AC
- OVERBURDEN/ STOCKPILE: 0.2 AC
- PINELAND GPI MINE
- DISCHARGE

**REVISED: 9/17/2019**



Discharge Point  
Lat: 33.131044 N  
Long: -80.408974 W



**NOI MAP**  
**PINELAND INDIVIDUAL MINE SEGMENT 1**  
**DORCHESTER COUNTY, SC**

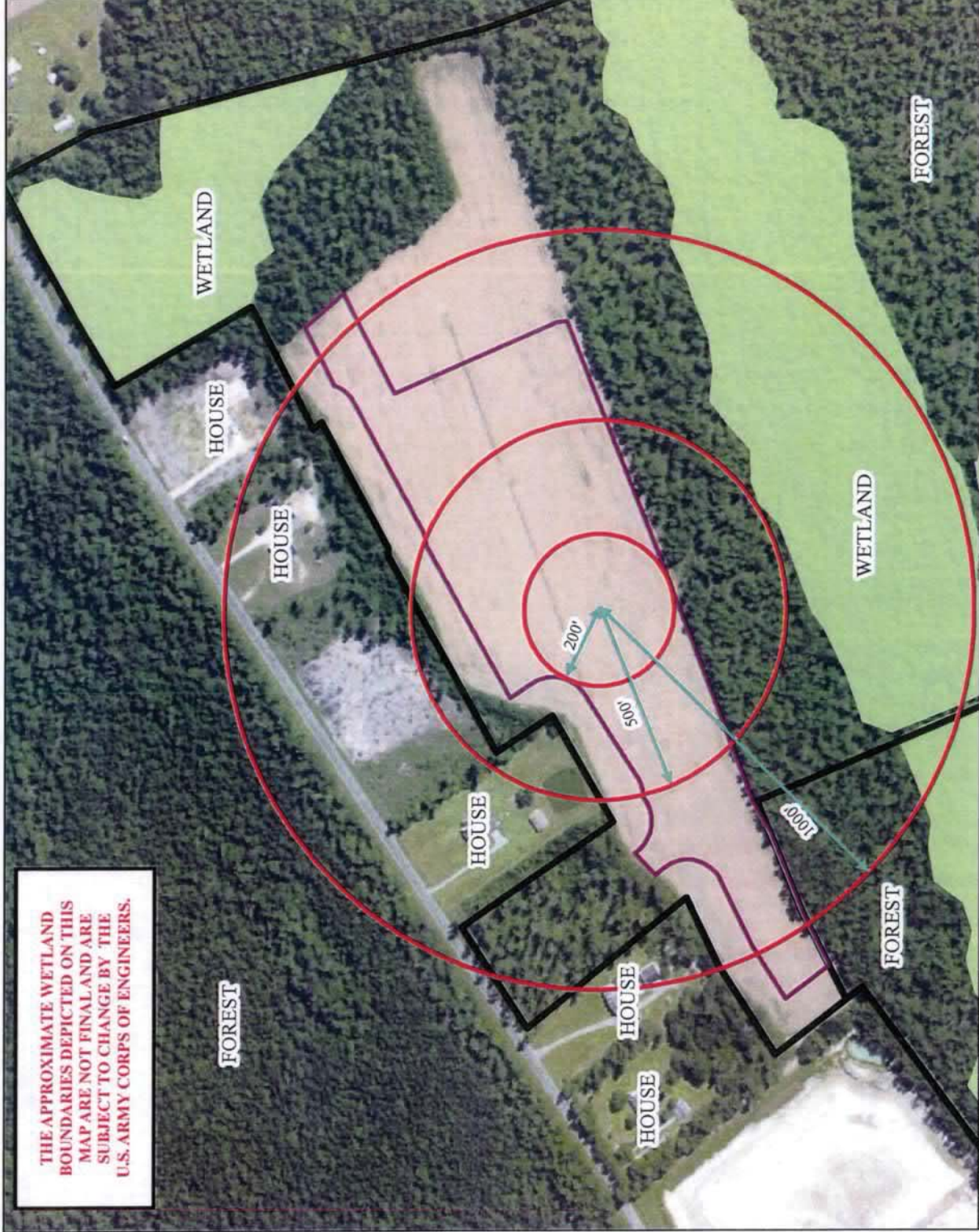


EXTERNAL SOURCES: DORCHESTER COUNTY GIS PARCELS, USGS TOPOQUAD

Created By: Stephen Bennett  
Copyright 2019 Sabine & Waters, Inc.  
Environmental Land Management Consultants  
840 RT 15383 (phone) 843.871.2050 (fax)  
Riverside/landridge road holding/mining  
maping/segment1/19101919

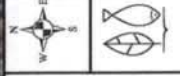
Disclaimer: This map is a graphic representation of data obtained from various sources. All efforts have been made to warrant the accuracy of this information. Sabine & Waters, Inc. disclaims all responsibility and liability for the use of this map.

**THE APPROXIMATE WETLAND BOUNDARIES DEPICTED ON THIS MAP ARE NOT FINAL AND ARE SUBJECT TO CHANGE BY THE U.S. ARMY CORPS OF ENGINEERS.**



**MINE PROXIMITY MAP**  
**APPLICANT:**  
 SANDRIDGE ROAD HOLDINGS, LLC  
**OWNER:**  
 SANDRIDGE ROAD HOLDINGS, LLC  
 PREPARED BY:  
 Stephen Bennett  
 SABINE & WATERS, INC.  
 September 17, 2019

**LEGEND**  
 ■ PROPERTY BOUNDARY: 256 AC  
 ■ PIT FOOTPRINT: 17.3 AC  
 ■ MINE BUFFERS  
 ■ WETLANDS  
**REVISED: 9/17/2019**



**MINE PROXIMITY MAP**  
**PINELAND INDIVIDUAL MINE SEGMENT 1**  
**DORCHESTER COUNTY, SC**

**EXTERNAL SOURCES: DORCHESTER COUNTY GIS PARCELS, NAIP-2017 TRUE COLOR AERIAL**  
 Created By: Stephen Bennett  
 Date Created: September 17, 2019  
 Prepared For: Sabine & Waters, Inc.  
 Environmental Land Management Consultants  
 P.O. Box 1077 Summerville, SC 29486  
 Phone: 803-792-1111  
 E-mail: info@sabineandwaters.com  
 E-mail: stephen@sabineandwaters.com  
 Mapping Software: ArcGIS Pro 2.5.0

**Disclaimer:** This map is a public representation of data obtained from various sources. All errors have been made to the best of our ability. However, Sabine & Waters, Inc. disclaims all responsibility and liability for the use of this map.

RECLAMATION MAP

APPLICANT:  
SANDRIDGE ROAD  
HOLDINGS, LLC

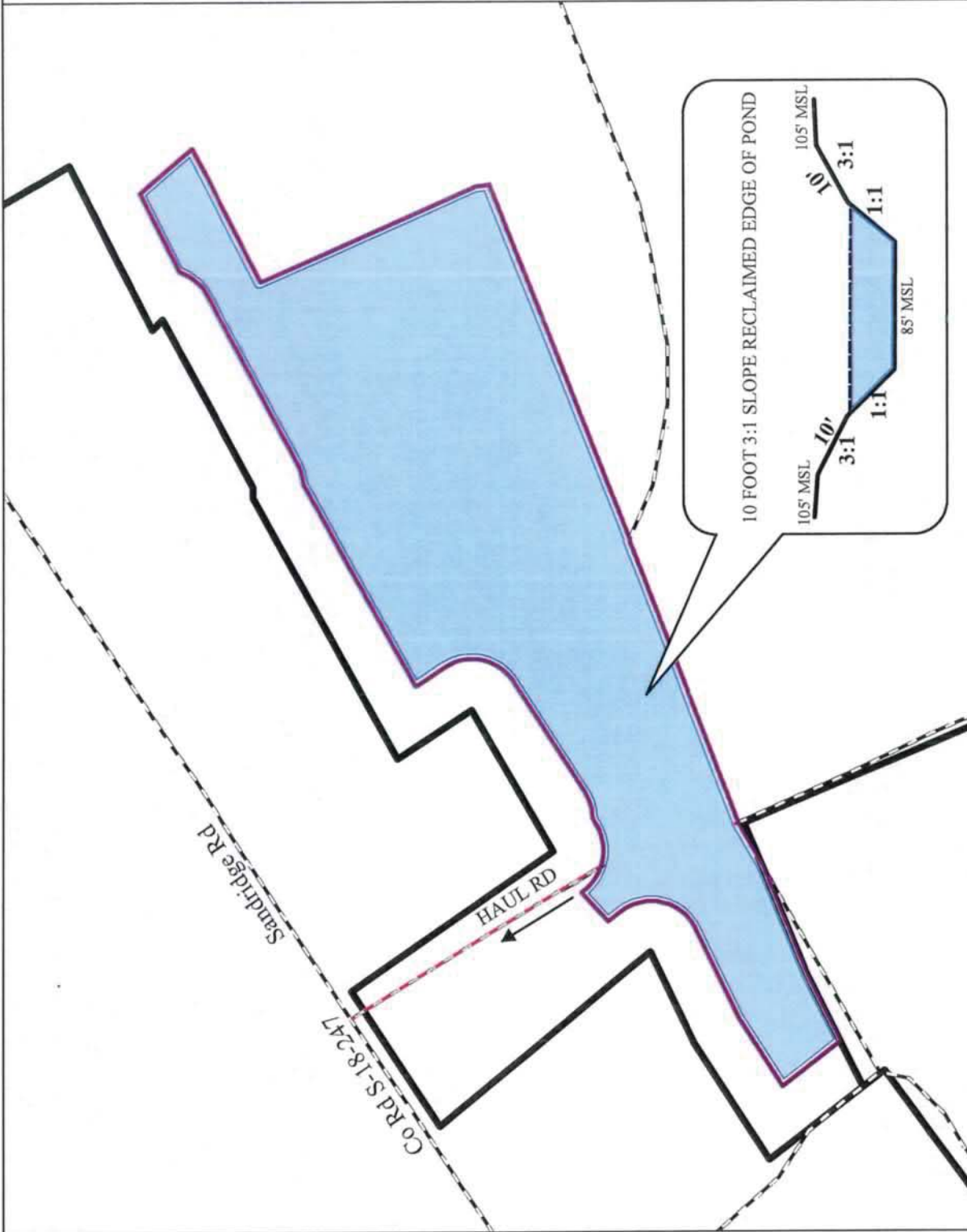
OWNER:  
SANDRIDGE ROAD  
HOLDINGS, LLC

PREPARED BY:  
Stephen Bennett  
SABINE & WATERS, INC.  
September 17, 2019

LEGEND

- PROPERTY BOUNDARY: 256 AC
- PIT FOOTPRINT: 17.3 AC
- WATER: 16.1 AC
- HAUL ROAD
- ROADS

REVISED: 9/17/2019



RECLAMATION MAP  
 PINELAND INDIVIDUAL MINE SEGMENT 1  
 DORCHESTER COUNTY, SC

EXTERNAL SOURCES: DORCHESTER COUNTY GIS PARCELS & ROADS

Created By: Stephen Bennett  
 Date Created: September 17, 2019  
 Copyright 2019 Sabine & Waters, Inc.  
 P.O. Box 1072 Summerville, SC 29484  
 803.471.1383 (phone) 803.471.2050 (fax)  
 mapping@sabineandwaters.com

Disclaimer: This map is a graphic representation of data obtained from  
 external sources. Sabine & Waters, Inc. disclaims all responsibility and  
 liability for the use of this map.

**MINE MAP**  
**APPLICANT:**  
 SANDRIDGE ROAD  
 HOLDINGS, LLC  
**OWNER:**  
 SANDRIDGE ROAD  
 HOLDINGS, LLC

**PREPARED BY:**  
 Stephen Bennett  
 SABINE & WATERS, INC.  
 September 17, 2019

- LEGEND**
- PROPERTY BOUNDARY: 256 AC
  - PIT FOOTPRINT: 17.3 AC
  - PINELAND GPI MINE
  - WETLANDS: 68 AC
  - OVERBURDEN/ STOCKPILE: 0.2 AC
  - RIP RAP SILT FENCE
  - DISCHARGE
  - HAUL ROAD
  - ROADS

**REVISED: 9/17/2019**

FIELD

100' BUFFER FROM  
 THE PROPERTY LINE

Discharge Point  
 Lat: 33.131044 N  
 Long: -80.408974 W

DIRECTION OF EXCAVATION

550'

1860'

HAUL RD

**THE APPROXIMATE WETLAND BOUNDARIES DEPICTED ON THIS MAP ARE NOT FINAL AND ARE SUBJECT TO CHANGE BY THE U.S. ARMY CORPS OF ENGINEERS.**

WOODLANDS

HOUSE

HOUSE

HOUSE

HOUSE

HOUSE

WETLAND

WOODLANDS

WOODLANDS

WETLAND

WOODLANDS

WOODLANDS

WETLAND



**MINE MAP**  
**PINELAND INDIVIDUAL MINE SEGMENT 1**  
**DORCHESTER COUNTY, SC**



EXTERNAL SOURCE: DORCHESTER COUNTY GIS PARCELS & ROADS

Created By: Stephen Bennett  
 Date Created: March 27, 2018  
 Copyright 2018 Sabine & Waters, Inc.  
 10000 Sabalwood Drive, Suite 100  
 P.O. Box 1072 Summerville, SC 29484  
 803.871.5183 (phone) 843.871.2059 (fax)  
 mapping@swi-map.com | www.swi-map.com

Disclaimer: This map is a graphic representation of data obtained from various data sources. It is not intended to be used as a legal document. The user assumes all responsibility and liability for the use of this map.

**LOCATION MAP**

**APPLICANT:**  
SANDRIDGE ROAD  
HOLDINGS, LLC

**OWNER:**  
SANDRIDGE ROAD  
HOLDINGS, LLC

**PREPARED BY:**  
Stephen Bennett  
SABINE & WATERS, INC.  
September 17, 2019

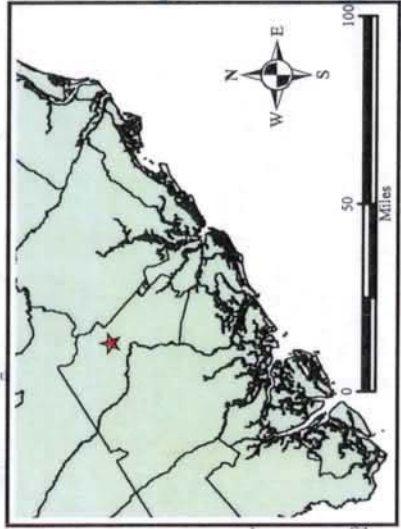
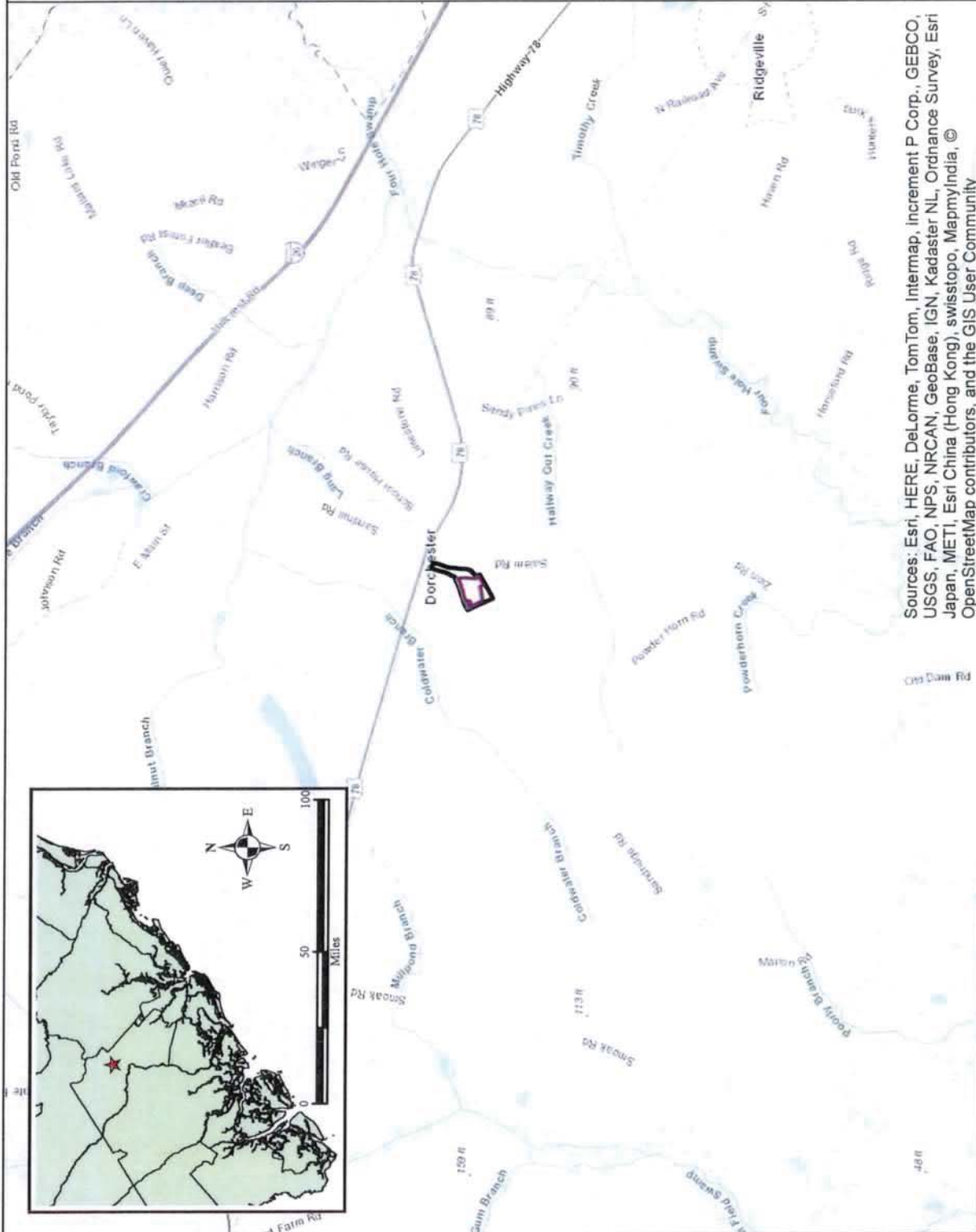
Long: -80.405350 W  
Lat: 33.134504 N

**LEGEND**

▣ PROPERTY BOUNDARY: 62 AC

▣ PIT FOOTPRINT: 27.0 AC

**REVISED: 9/17/2019**



Sources: Esri, HERE, DeLorme, TomTom, Intermap, increment P Corp., GEBCO, USGS, FAO, NPS, NRCAN, GeoBase, IGN, Kadaster NL, Ordnance Survey, Esri Japan, METI, Esri China (Hong Kong), swisstopo, MapmyIndia, © OpenStreetMap contributors, and the GIS User Community

**LOCATION MAP**

**PINELAND FARM INDIVIDUAL MINE SEGMENT 2  
DORCHESTER COUNTY, SC**



EXTERNAL SOURCES: ESRI ONLINE TOPO BASEMAP; DORCHESTER COUNTY GIS BARCH

Created By: Stephen Bennett  
Copyright 2019 Sabine & Waters, Inc.  
Environmental Land Management Consultants  
403.871.2333 (phone) 403.871.2650 (fax)  
R:\outside\pineland\road\_holding\pineland\map\map\pineland\pineland.dwg

Disclaimer: This map is a graphic representation of data obtained from various sources. All efforts have been made to warrant the accuracy of this map. However, Sabine & Waters, Inc. disclaims all responsibility and liability for the use of this map.

**NOI MAP**

**APPLICANT:**  
SANDRIDGE ROAD HOLDINGS, LLC

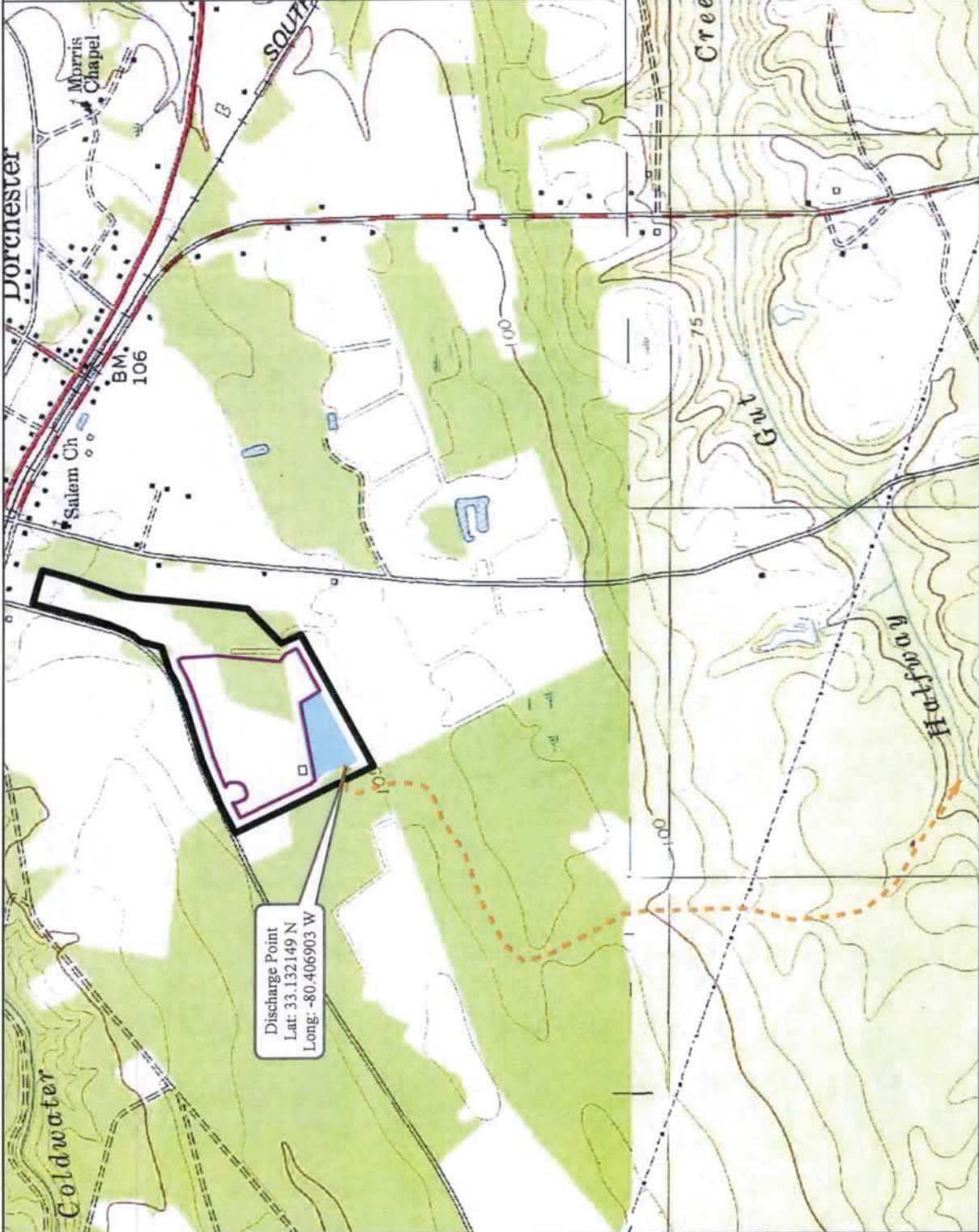
**OWNER:**  
SANDRIDGE ROAD HOLDINGS, LLC

PREPARED BY:  
Stephen Bennett  
SABINE & WATERS, INC.  
September 17, 2019

**LEGEND**

- PROPERTY BOUNDARY: 62 AC
- PIT FOOTPRINT: 27.0 AC
- PINELAND FARM GPI MINE
- OVERBURDEN/ STOCKPILE: 0.2 AC
- DISCHARGE

**REVISED: 9/17/2019**



**NOI MAP**

**PINELAND FARM INDIVIDUAL MINE SEGMENT 2**  
**DORCHESTER COUNTY, SC**

EXTERNAL SOURCES: DORCHESTER COUNTY GIS PARCELS, USGS TOPOQUAD

Created By: Stephen Bennett  
Date Created: September 17, 2019  
Environmental Land Management Consultants  
P.O. Box 1072 Summerville, SC 29484  
K. Sabine & Waters, Inc. is a registered professional engineering consulting firm.  
Mapping Segment 2, not used

Disclaimer: This map is a graphic representation of data obtained from a map. However, Sabine & Waters, Inc. disclaims all responsibility and liability for the use of this map.

Scale: 0 to 2,700 Feet



**RECLAMATION MAP**

**APPLICANT:**  
SANDRIDGE ROAD  
HOLDINGS, LLC

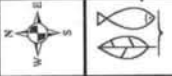
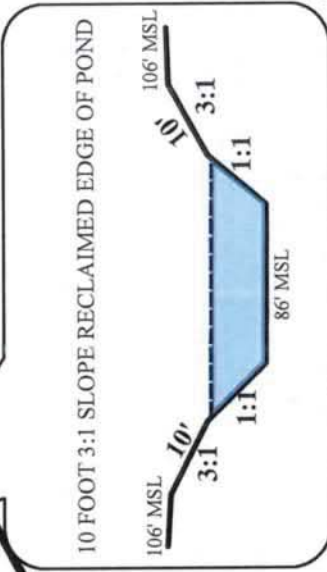
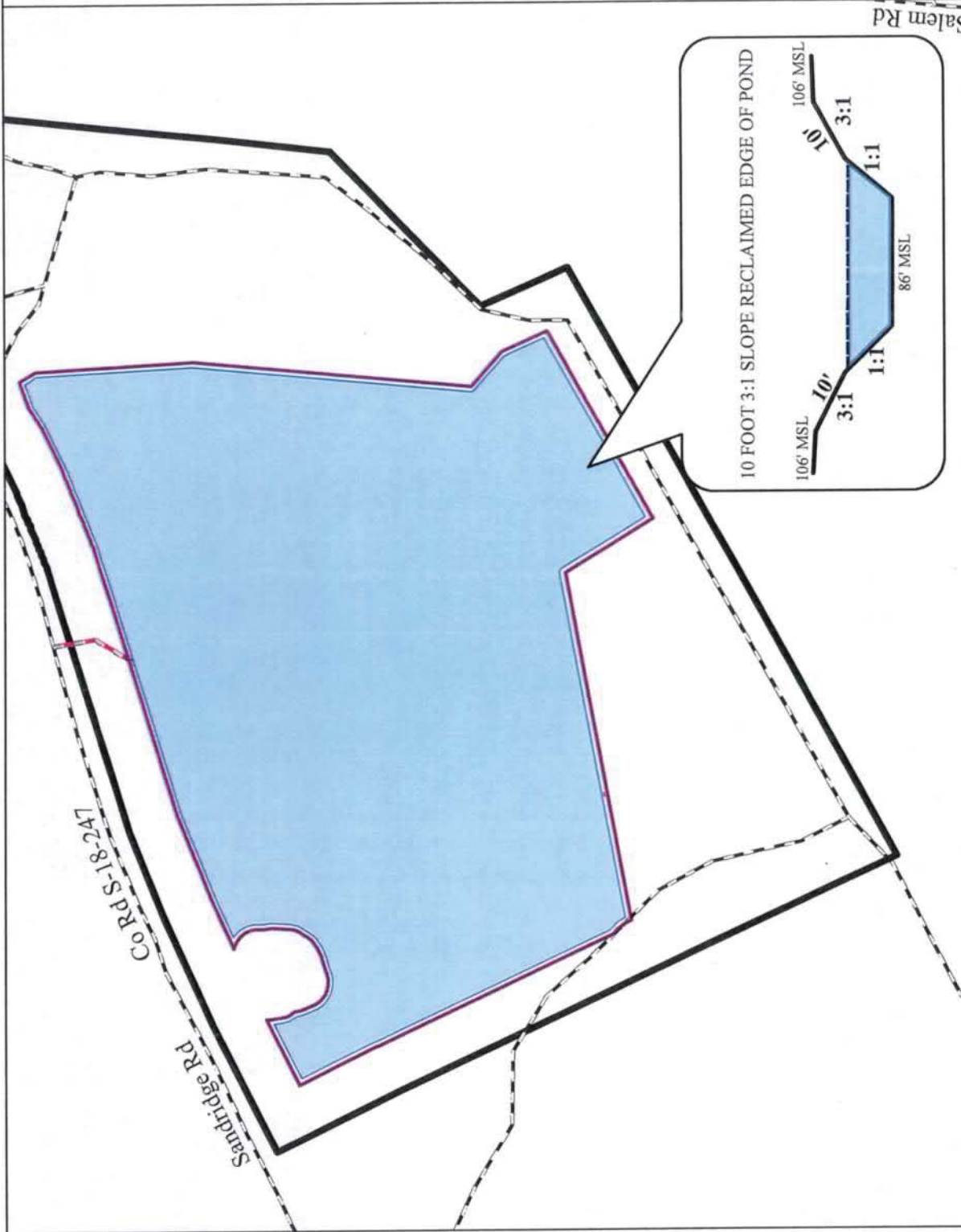
**OWNER:**  
SANDRIDGE ROAD  
HOLDINGS, LLC

PREPARED BY:  
Stephen Bennett  
SABINE & WATERS, INC.  
September 17, 2019

**LEGEND**

- PROPERTY BOUNDARY: 62 AC
- PIT FOOTPRINT: 27.0 AC
- WATER: 25.8 AC
- HAUL ROAD
- ROADS

**REVISED: 9/17/2019**



**RECLAMATION MAP**  
**PINELAND FARM INDIVIDUAL MINE SEGMENT 2**  
**DORCHESTER COUNTY, SC**

EXTERNAL SOURCES: DORCHESTER COUNTY GIS PARCEL & ROADS  
 Created By: Stephen Bennett  
 Copyright 2019 Sabine & Waters, Inc.  
 Prepared for: Land Management Consultants  
 843.871.3383 (phone) 843.871.2000 (fax)  
 1500 Sandridge Road, Building 1000 (mailing)  
 Revere, Virginia Beach, VA 23462  
 Disclaimer: This map is a graphic representation of data obtained from various sources. All efforts have been made to warrant the accuracy of this information. Sabine & Waters, Inc. disclaims all responsibility and liability for the use of this map.

**MINE MAP**

**APPLICANT:**  
SANDRIDGE ROAD  
HOLDINGS, LLC

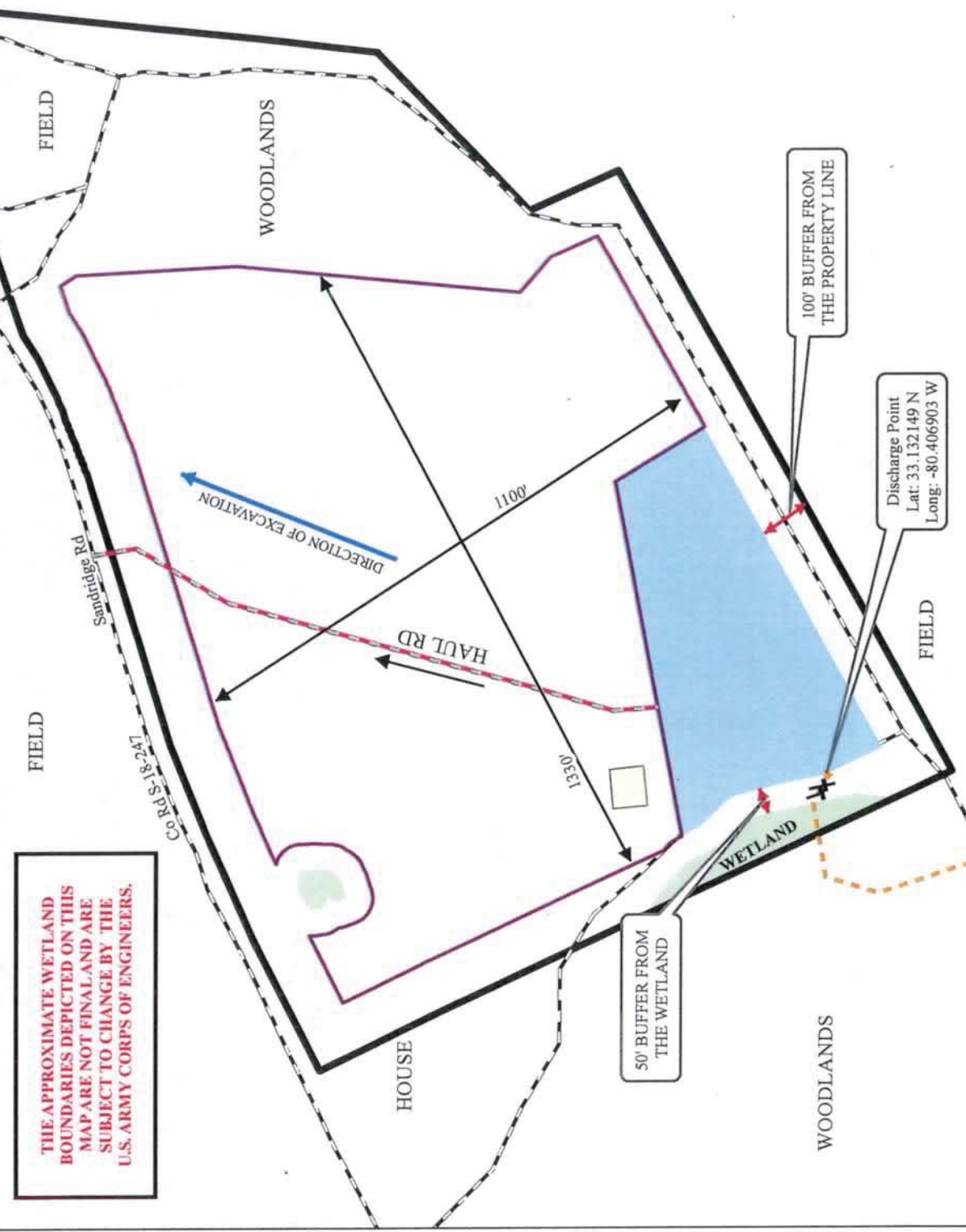
**OWNER:**  
SANDRIDGE ROAD  
HOLDINGS, LLC

PREPARED BY:  
Stephen Bennett  
SABINE & WATERS, INC.  
September 17, 2019

**LEGEND**

- PROPERTY BOUNDARY: 62 AC
- PIT FOOTPRINT: 27.0 AC
- PINELAND FARM GP1 MINE
- OVERBURDEN/ STOCKPILE: 0.2 AC
- RIP RAP SILT FENCE
- DISCHARGE
- WETLANDS
- HAUL ROAD
- ROADS

**REVISED: 9/17/2019**



**THE APPROXIMATE WETLAND BOUNDARIES DEPICTED ON THIS MAP ARE NOT FINAL AND ARE SUBJECT TO CHANGE BY THE U.S. ARMY CORPS OF ENGINEERS.**

**MINE MAP**

**PINELAND FARM INDIVIDUAL MINE SEGMENT 2**

**DORCHESTER COUNTY, SC**

EXTERNAL SOURCES: DORCHESTER COUNTY GIS PARCEL & ROADS

Created By: Stephen Bennett  
Date Created: September 17, 2019  
Copyright 2019 Sabine & Waters, Inc.  
1000 Lakeshore Drive  
P.O. Box 1072 Summerville, SC 29484  
803.371.1330 (phone) 803.371.2050 (fax)  
sapping@pinelandfarm.com  
mapping@pinelandfarm.com

Disclaimer: This map is a graphic representation of data obtained from external sources. Sabine & Waters, Inc. does not warrant the accuracy of this map. However, Sabine & Waters, Inc. disclaims all responsibility and liability for the use of this map.

0 300 600 Feet

**MINE  
PROXIMITY MAP**

**APPLICANT:  
SANDRIDGE ROAD  
HOLDINGS, LLC**

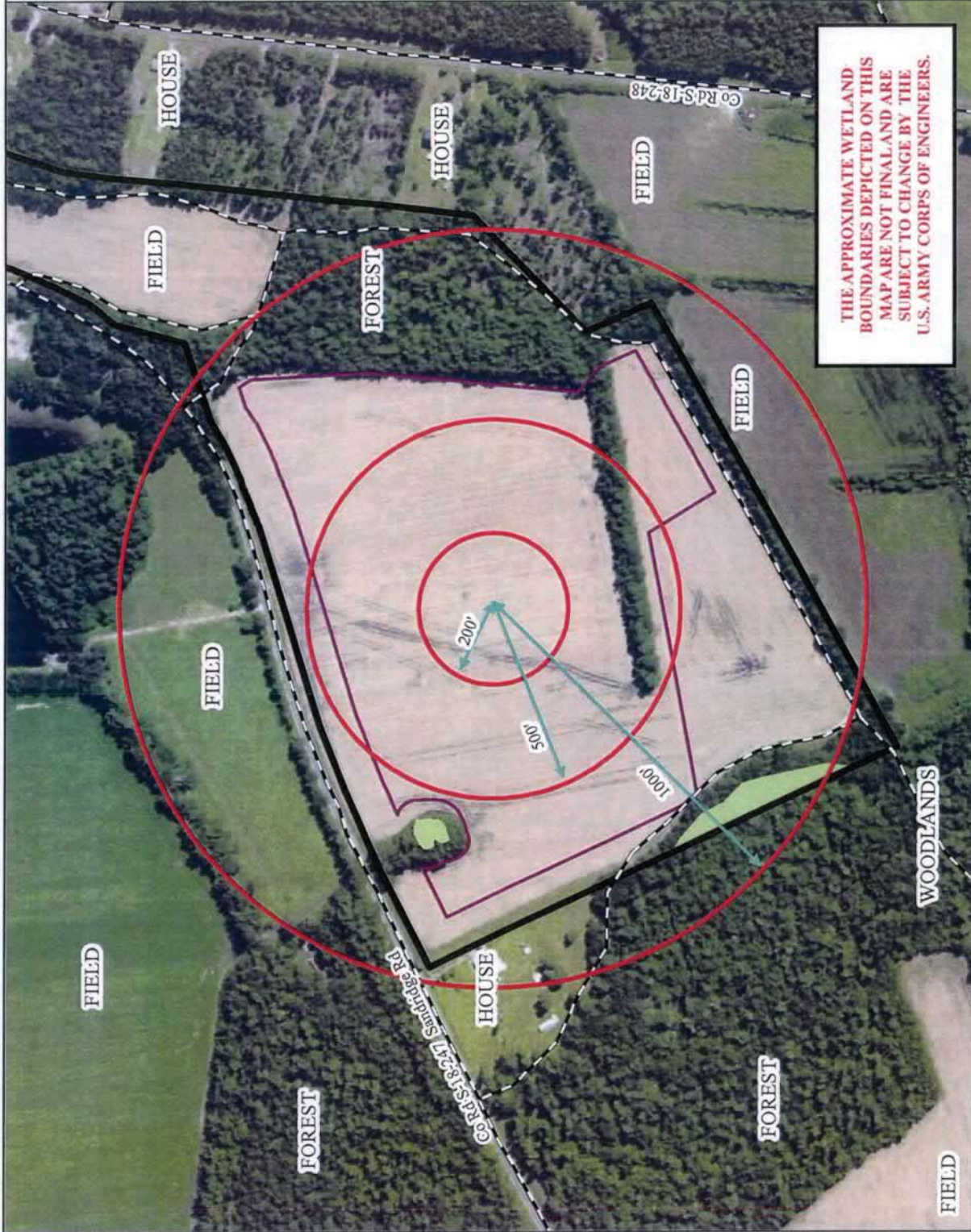
**OWNER:  
SANDRIDGE ROAD  
HOLDINGS, LLC**

PREPARED BY:  
Stephen Bennett  
SABINE & WATERS, INC.  
September 17, 2019

**LEGEND**

- PROPERTY BOUNDARY: 62 AC
- PIT FOOTPRINT: 27.0 AC
- MINE BUFFERS
- WETLANDS
- ROADS

**REVISED: 9/17/2019**



**MINE PROXIMITY MAP  
PINELAND FARM INDIVIDUAL MINE SEGMENT 2  
DORCHESTER COUNTY, SC**

EXTERNAL SOURCES: DORCHESTER COUNTY GIS PARCEL & ROADS

Created By: Stephen Bennett  
Date: 9/17/2019  
Client: Sandridge Road Holdings, LLC  
Environmental Land Management Consultants  
1401 E. 31st Street, Suite 200  
Riverside, North Carolina 27570 (919) 881-2155  
R:\sc\sd\landridge\road\_holding\proximity\_map.aprx

Disclaimer: This map is a graphic representation of data obtained from various sources. All efforts have been made to warrant the accuracy of this map. However, Sabine & Waters, Inc. disclaims all responsibility and liability for the use of this map.

**LOCATION MAP**

**APPLICANT:**  
**SANDRIDGE ROAD HOLDINGS, LLC**

**OWNER:**  
**SANDRIDGE ROAD HOLDINGS, LLC**

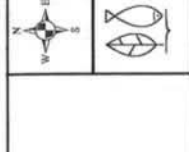
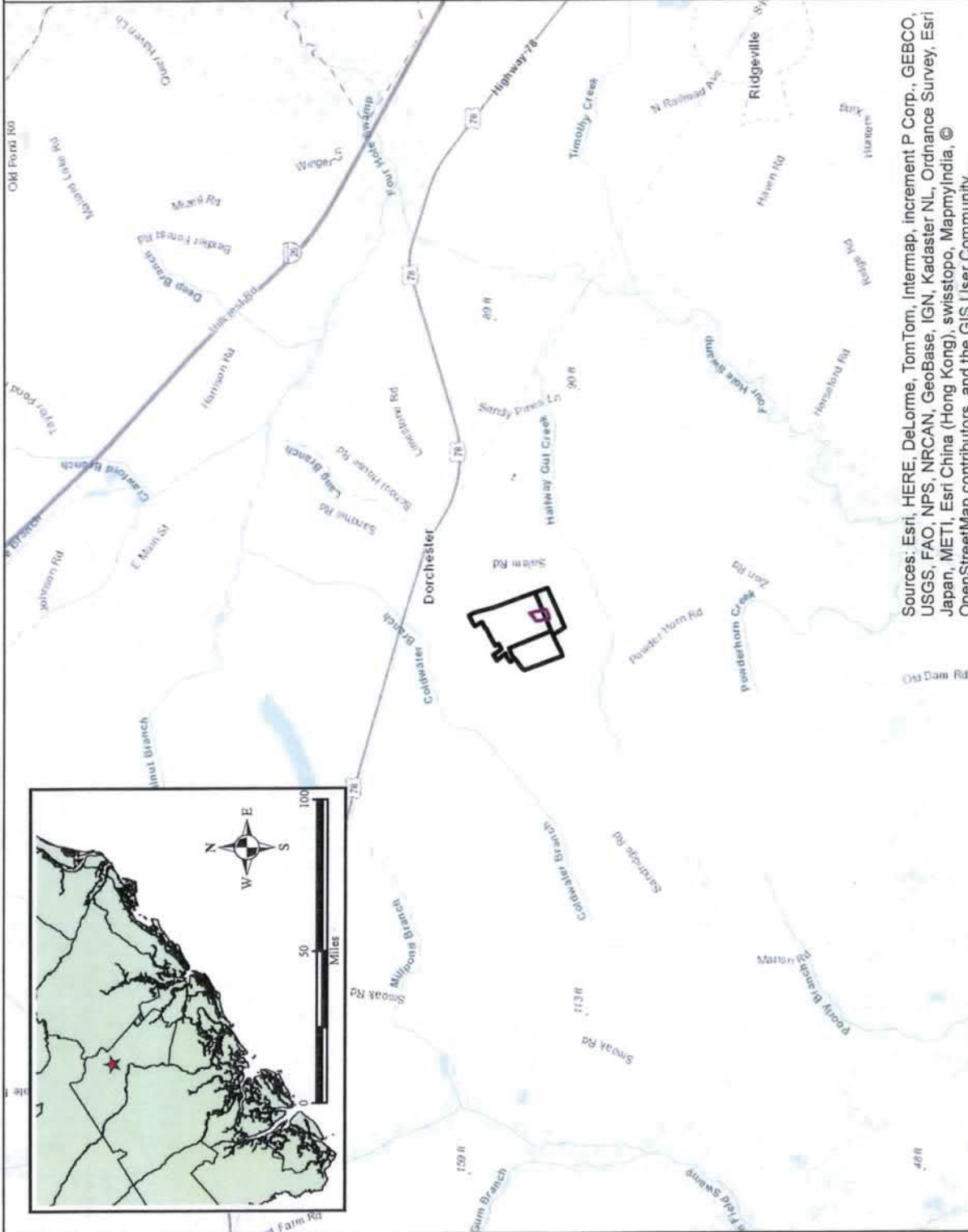
**PREPARED BY:**  
 Stephen Bennett  
 SABINE & WATERS, INC.  
 September 17, 2019

Long: -80.409896 W  
 Lat: 33.124789 N

**LEGEND**

- PROPERTY BOUNDARY: 256 AC
- PIT FOOTPRINT: 8.0 AC

**REVISED: 9/17/2019**



**LOCATION MAP**  
**PINELAND INDIVIDUAL MINE SEGMENT 3**  
**DORCHESTER COUNTY, SC**

Sources: Esri, HERE, DeLorme, TomTom, Intermap, increment P Corp., GEBCO, USGS, FAO, NPS, NRCAN, GeoBase, IGN, Kadaster NL, Ordnance Survey, Esri Japan, METI, Esri China (Hong Kong), swisstopo, MapmyIndia, © OpenStreetMap contributors, and the GIS User Community

**EXTERNAL SOURCES:** ESRI ONLINE TONS BASEMAP; DORCHESTER COUNTY GIS; GOOGLE EARTH

Created By: Stephen Bennett  
 Date Created: September 17, 2019  
 Copyright 2019 Sabine & Waters, Inc.  
 P.O. Box 1072 Summerville, SC 29484  
 843.871.3363 (phone) 843.871.2050 (fax)  
 www.sabineandwaters.com  
 mapping@sabineandwaters.com

Disclaimer: This map is a graphic representation of data obtained from external sources. Sabine & Waters, Inc. does not warrant the accuracy of this data. However, Sabine & Waters, Inc. maintains full responsibility and liability for the use of this map.

MINE MAP

APPLICANT:  
SANDRIDGE ROAD  
HOLDINGS, LLC

OWNER:  
SANDRIDGE ROAD  
HOLDINGS, LLC

PREPARED BY:  
Stephen Bennett  
SABINE & WATERS, INC.  
September 17, 2019

LEGEND

- PROPERTY BOUNDARY: 256 AC
- PIT FOOTPRINT: 8.0 AC
- WETLANDS: 68 AC
- OVERBURDEN/ STOCKPILE: 0.2 AC
- PIT DEWATER AREA: 0.2 AC
- RIP RAP SILT FENCE
- DISCHARGE
- HAUL ROAD
- ROADS

REVISED: 9/17/2019

THE APPROXIMATE WETLAND  
BOUNDARIES DEPICTED ON THIS  
MAP ARE NOT FINAL AND ARE  
SUBJECT TO CHANGE BY THE  
U.S. ARMY CORPS OF ENGINEERS.

WOODLANDS

WOODLANDS

WETLAND

WOODLANDS

WETLAND

WOODLANDS

WETLAND

DIRECTION OF EXCAVATION

715'

500'

Discharge Point  
Lat: 33.123621 N  
Long: -80.410297 W

HAUL RD



MINE MAP

PINELAND INDIVIDUAL MINE SEGMENT 3  
DORCHESTER COUNTY, SC



EXTERNAL SOURCES: DORCHESTER COUNTY GIS PARCELS & ROADS

Created By: Stephen Bennett  
Date: 9/17/2019  
Map Scale: 1" = 400 Feet  
Map Projection: UTM  
Data Source: Environmental Land Management Consultants  
SABINE & WATERS, INC. 2019  
4401 S. 13th St., Suite 100  
Riverside, North Carolina 27570  
www.sabineandwaters.com

Disclaimer: This map is a graphic representation of data obtained from various sources. All efforts have been made to warrant the accuracy of this map. However, Sabine & Waters, Inc. disclaims all responsibility and liability for the use of this map.





**MINE PROXIMITY MAP**

**APPLICANT:**  
SANDRIDGE ROAD HOLDINGS, LLC

**OWNER:**  
SANDRIDGE ROAD HOLDINGS, LLC

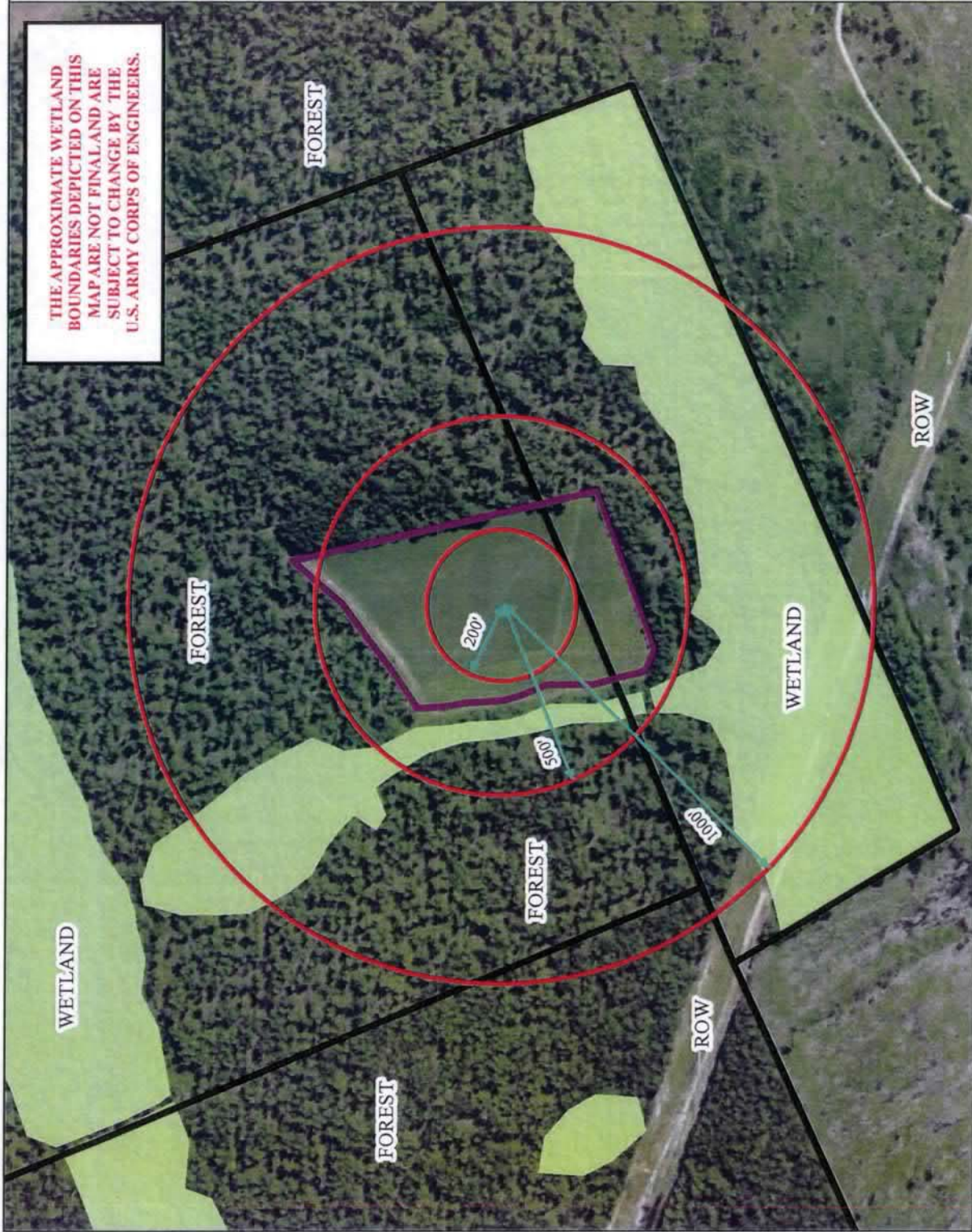
**PREPARED BY:**  
Stephen Bennett  
SABINE & WATERS, INC.  
September 17, 2019

**LEGEND**

-  PROPERTY BOUNDARY: 256 AC
-  PIT FOOTPRINT: 8.0 AC
-  MINE BUFFERS
-  WETLANDS

**REVISED: 9/17/2019**

THE APPROXIMATE WETLAND BOUNDARIES DEPICTED ON THIS MAP ARE NOT FINAL AND ARE SUBJECT TO CHANGE BY THE U.S. ARMY CORPS OF ENGINEERS.



**MINE PROXIMITY MAP**  
**PINELAND INDIVIDUAL MINE SEGMENT 3**  
**DORCHESTER COUNTY, SC**



EXTERNAL SOURCES: DORCHESTER COUNTY GIS PARCELS, SANDRIDGE ROAD HOLDINGS, LLC

Created by: Stephen Bennett 2019  
Copyright 2019 Sabine & Waters, Inc.  
Environmental Land Management Consultants  
843.871.5183 (phone) 843.871.2100 (fax)  
R: c:\data\mfr\pdr\road\_holding\proximity\_map.mxd

Disclaimer: This map is a graphic representation of data obtained from various sources. A 30-day effort has been made to warrant the accuracy of this information. However, the firm disclaims all responsibility and liability for the use of this map.

**NOI MAP**

**APPLICANT:**  
SANDRIDGE ROAD  
HOLDINGS, LLC

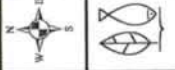
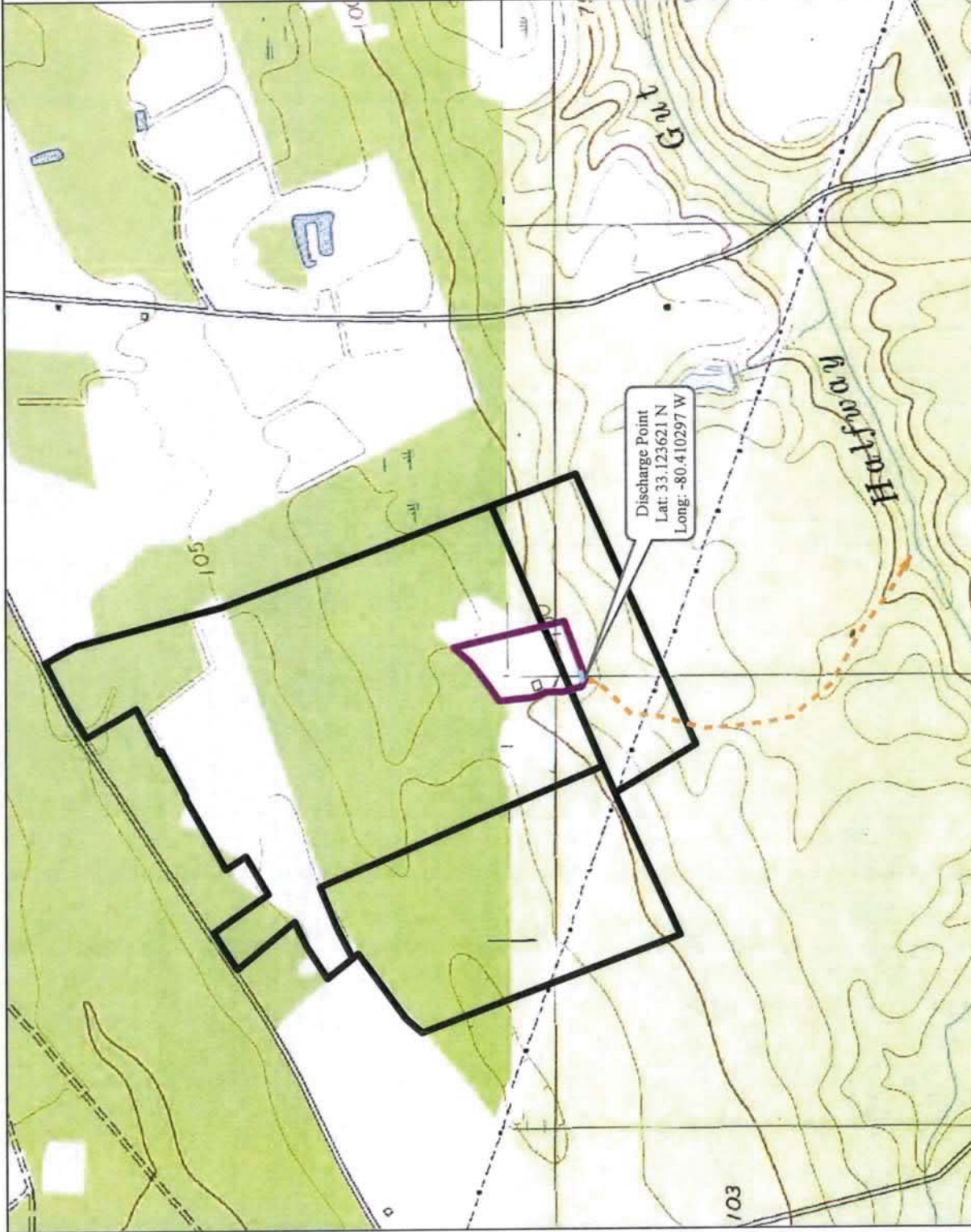
**OWNER:**  
SANDRIDGE ROAD  
HOLDINGS, LLC

**PREPARED BY:**  
Stephen Bennett  
SABINE & WATERS, INC.  
September 17, 2019

**LEGEND**

- PROPERTY BOUNDARY: 256 AC
- PIT FOOTPRINT: 8.0 AC
- OVERBURDEN STOCKPILE: 0.2 AC
- PIT DEWATER AREA: 0.2 AC
- DISCHARGE

**REVISED: 9/17/2019**



**NOI MAP**  
**PINELAND INDIVIDUAL MINE SEGMENT 3**  
**DORCHESTER COUNTY, SC**

EXTERNAL SOURCES: DORCHESTER COUNTY GIS PARCELS, USGS TOPOGRAPHICAL

Created by: Stephen Bennett  
Data Date: September 17, 2019  
Copyright 2019 Sabine & Waters, Inc.  
SABINE & WATERS, INC.  
1070 Land Mining Company  
443.871.5300 (phone) 443.871.2050 (fax)  
E:swaters@landmining.com  
www.landmining.com

Disclaimer: This map is a graphic representation of data obtained from various sources. All efforts have been made to warrant the accuracy of this information. Sabine & Waters, Inc. disclaims all responsibility and liability for the use of this map.






**RECLAMATION MAP**

**APPLICANT:**  
SANDRIDGE ROAD  
HOLDINGS, LLC

**OWNER:**  
SANDRIDGE ROAD  
HOLDINGS, LLC

PREPARED BY:  
Stephen Bennett  
SABINE & WATERS, INC.  
September 17, 2019

**LEGEND**

-  PROPERTY BOUNDARY: 256 AC
-  PIT FOOTPRINT: 8.0 AC
-  WATER: 7.4 AC
-  HAUL ROAD
-  ROADS

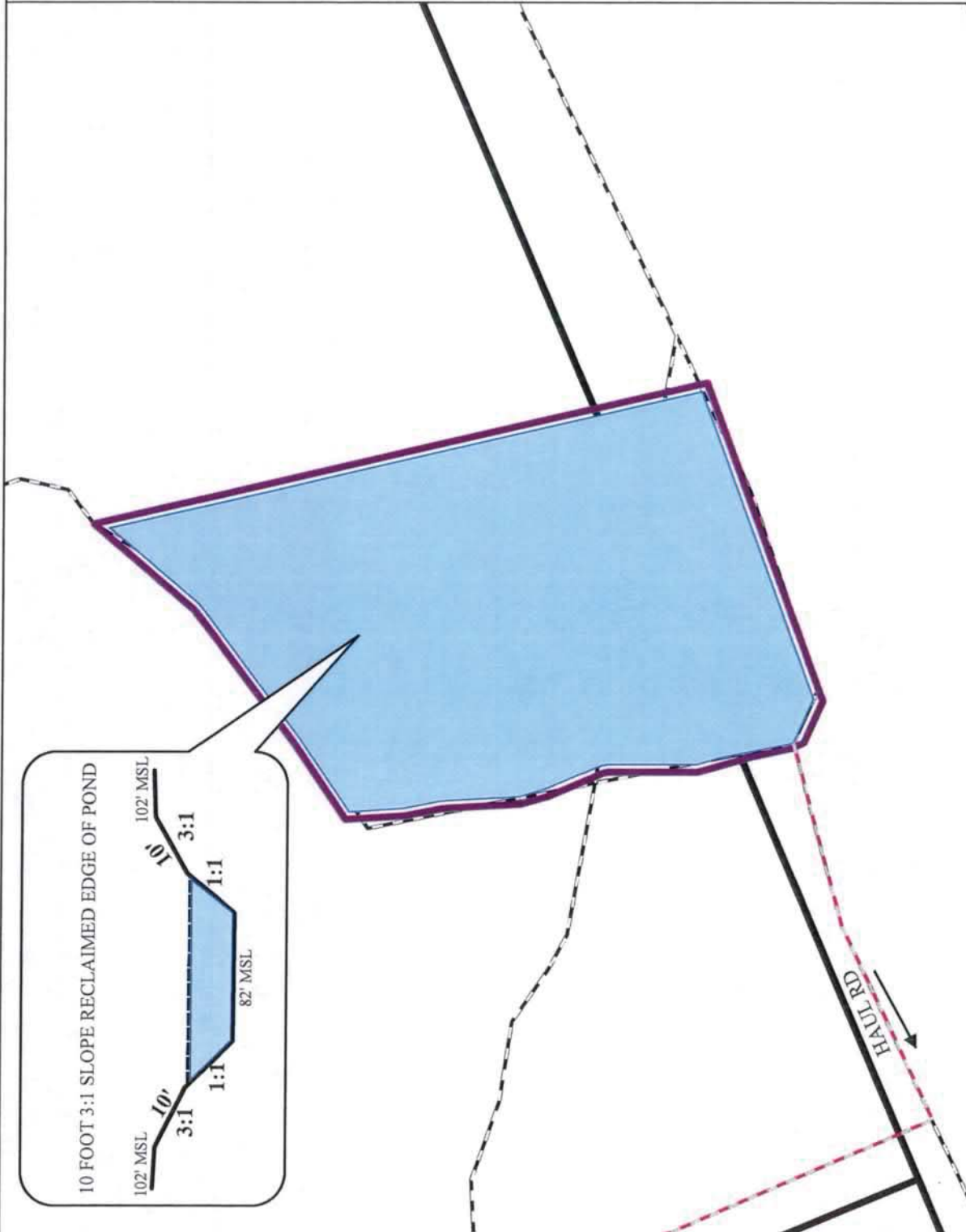
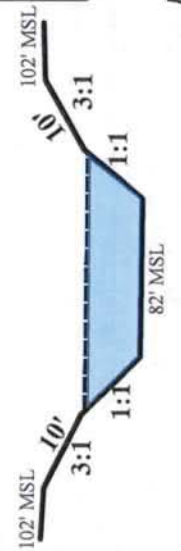
**REVISED: 9/17/2019**



**RECLAMATION MAP**  
**PINELAND INDIVIDUAL MINE SEGMENT 3**  
**DORCHESTER COUNTY, SC**



**10 FOOT 3:1 SLOPE RECLAIMED EDGE OF POND**



EXTERNAL SOURCES: DORCHESTER COUNTY GIS PARCELS & ROADS

Created By: Stephen Bennett  
Copyright 2019 Sabine & Waters, Inc.  
Environmental Land Management Consultants  
843.871.5383 (Phone) 843.871.2050 (Fax)  
E: [sw@swandw.com](mailto:sw@swandw.com) [www.swandw.com](http://www.swandw.com)

Disclaimer: This map is a graphic representation of data obtained from various sources. All efforts have been made to warrant the accuracy of this liability for the use of this map.