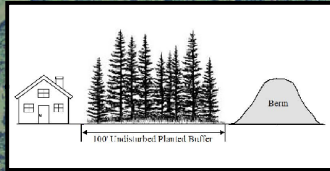


THE APPROXIMATE WETLAND BOUNDARIES DEPICTED ON THIS MAP ARE NOT FINAL AND ARE SUBJECT TO CHANGE BY THE U.S. ARMY CORPS OF ENGINEERS.

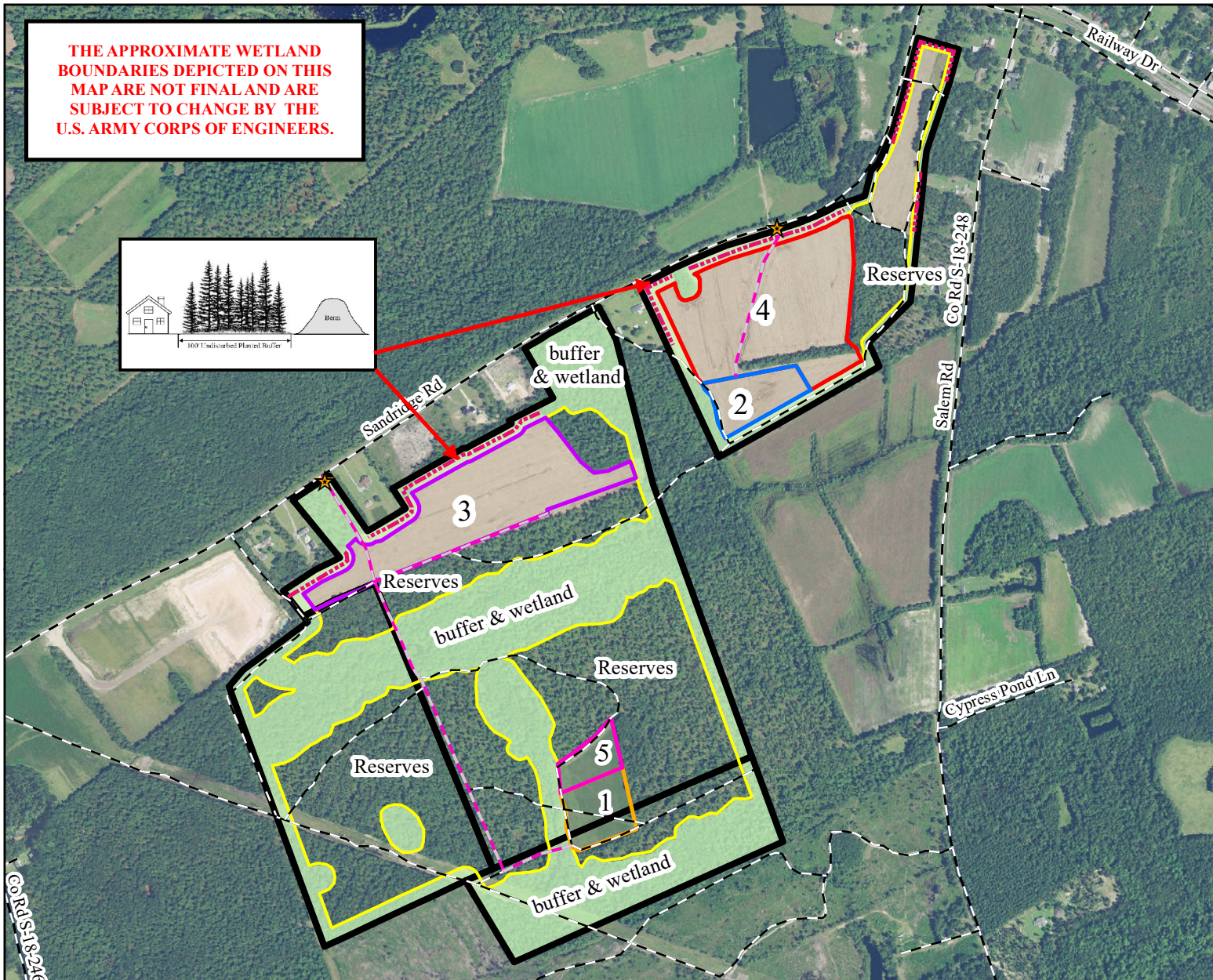


MINE SEGMENTS AND FUTURE RESERVES MAP

**APPLICANT:
SANDRIDGE HOLDINGS, LLC**

**OWNER:
SANDRIDGE HOLDINGS, LLC**

PREPARED BY:
Stephen Bennett
SABINE & WATERS, INC.
July 30, 2019



	PERMIT ACRES	318.0 acres
	AFFECTED ACRES	62.3 acres
	Segment 1 (GP1-002280)	5.0
	Segment 2 (GP1-002281)	5.0
	Segment 3	22.3
	Segment 4	27.0
	Segment 5	3.0
	FUTURE RESERVES	129.8 acres
	BUFFER AREA (buffers, wetlands)	125.9 acres

LEGEND

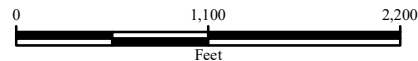
- 100FT PLANTED BUFFER & BERM
- HAUL ROADS
- ROADS
- ACCESS POINTS

EXTERNAL SOURCES: DORCHESTER COUNTY GIS PARCELS, NAIP 2017 TRUE COLOR AERIAL

Created By: Stephen Bennett
Date Created: July 30, 2019
Copyright 2019 Sabine & Waters, Inc.
Environmental Land Management Consultants
P.O. Box 1072 Summerville, SC 29484
843.871.5383 (phone) 843.871.2050 (fax)
R:\cs\dtd\sandrledge land holdings\mining\mapping\segments_and_future_reserves.mxd

Disclaimer: This map is a graphic representation of data obtained from various sources. All efforts have been made to warrant the accuracy of this map. However, Sabine & Waters, Inc. disclaims all responsibility and liability for the use of this map.

**MINE SEGMENTS AND FUTURE RESERVES MAP
PINELAND MINE
DORCHESTER COUNTY, SC**



REVISED: 2/19/2020