



## Introduction

This fact sheet contains information about the Burlington Industries Cheraw site (the Site). The United States Environmental Protection Agency is committed to engaging the community in Cheraw. This fact sheet provides a brief description of the planned activities for a soil removal within the ditch along Pinewood Drive. Information on actions associated with other properties will be discussed in future fact Sheets.

## Site Location and Description

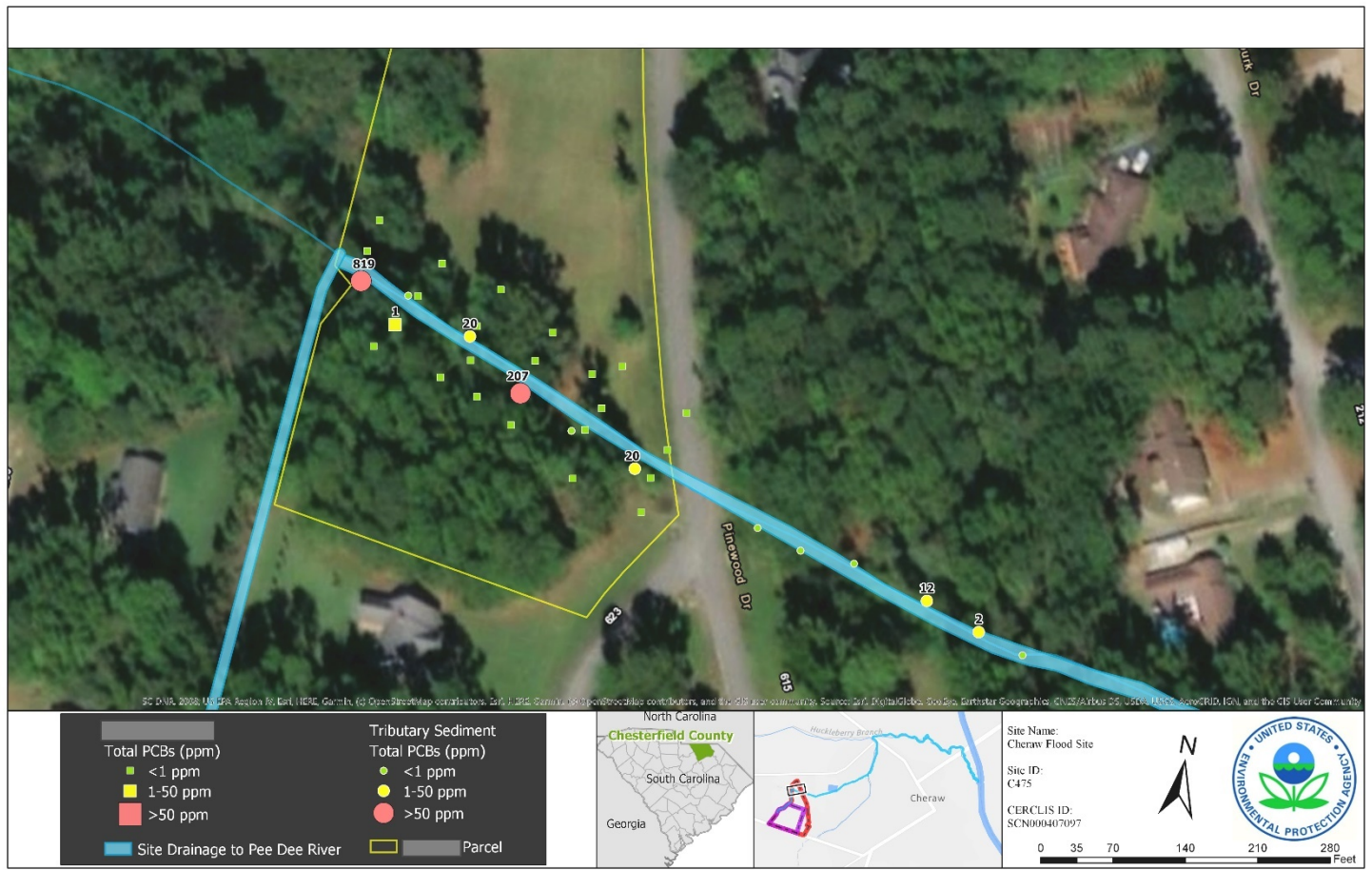
The Burlington Industries Cheraw site consists of the former Burlington Industries facility property, 3.2 miles of surface water drainage from the facility to the Great Pee Dee River and several adjacent parcels along the surface water pathway. Part of the former Burlington Industries facility is currently owned by Highland Industries, Inc. Adjacent properties to the surface water drainage corridor include 37 occupied private residences and public lands including Huckleberry Park.

## Cleanup Operations

Beginning in 2017 the EPA and Highland Industries have performed separate cleanup operations on multiple properties along the surface water drainage pathway. A summary of these cleanup operations was provided in the May 2019 Fact Sheet. In December 2018 soil and sediment samples collected from the Western Ditch upstream from the culvert under Pinewood Drive identified the presence of PCBs exceeding the EPA Region 4 Removal Management Levels for residential soil. PCB Aroclor 1254 was found to exceed the EPA Region 4 Removal Management Level (RML) for residential soil of 3,500  $\mu\text{g}/\text{kg}$  with a maximum concentration of 160,000  $\mu\text{g}/\text{kg}$ . The investigation also identified one location where PCB Aroclor 1248 was found at 200,000  $\mu\text{g}/\text{kg}$ , which exceeds the Aroclor 1248 RML of 23,000  $\mu\text{g}/\text{kg}$ . In July 2019 the EPA will mobilize to the Site and excavate soil and sediment along this portion of the Western Ditch. The attached figure shows the area where the excavation will occur.

## Future Activities

This work will conclude the last of the planned emergency response actions planned for this Site. All known high concentrations of PCBs in the environment have been addressed by the removal and emergency response actions taken by EPA and the consent agreement with Highland Industries, Inc. The next phase will consist of a Remedial Investigation (RI). EPA has begun negotiations with Highland Industries for conducting the RI. The RI will seek to evaluate actions for addressing the remaining PCBs in the environment including additional residential properties downstream, undeveloped properties, downstream ponds, creeks, wetlands, and the Pee Dee River.



## FOR MORE INFORMATION

### EPA Removal Manager

Matt Huyser  
 404-562-8934  
[Huyser.Matthew@epa.gov](mailto:Huyser.Matthew@epa.gov)

### EPA Remedial Project Manager

Jeff Crowley  
 404-562-9587  
[Crowley.Jeffery@epa.gov](mailto:Crowley.Jeffery@epa.gov)

### EPA Community Involvement Coordinator

Stephanie Y. Brown  
 (404) 562-8450  
[Brown.Stephaniey@epa.gov](mailto:Brown.Stephaniey@epa.gov)

### Information Repository

Matheson Memorial Library  
 227 Huger Street  
 Cheraw, South Carolina 29520